



PROVINCE OF THE EASTERN CAPE
IPHONDO LEMPUMA KOLONI
PROVINSIE OOS-KAAP

**Provincial Gazette
Igazethi Yephondo
Provinsiale Koerant**

Vol. 26

BISHO/KING WILLIAM'S TOWN
4 FEBRUARY 2019
4 FEBRUARIE 2019

No. 4178

We all have the power to prevent AIDS



**AIDS
HELPLINE**

0800 012 322

DEPARTMENT OF HEALTH

Prevention is the cure

N.B. The Government Printing Works will not be held responsible for the quality of "Hard Copies" or "Electronic Files" submitted for publication purposes

ISSN 1682-4556



9 771682 455006

04178



IMPORTANT NOTICE:

THE GOVERNMENT PRINTING WORKS WILL NOT BE HELD RESPONSIBLE FOR ANY ERRORS THAT MIGHT OCCUR DUE TO THE SUBMISSION OF INCOMPLETE / INCORRECT / ILLEGIBLE COPY.

No FUTURE QUERIES WILL BE HANDLED IN CONNECTION WITH THE ABOVE.

CONTENTS

Gazette *Page*
No. *No.*

PROVINCIAL NOTICES • PROVINSIALE KENNISGEWINGS

16	Spatial Planning and Land Use Management Act (16/2013): Erf 237, Amsterdamhoek.....	4178	11
17	Spatial Planning and Land Use Management Act (16/2013): Erf 89, Kabega, Port Elizabeth, Eastern Cape ...	4178	11
18	Mineral and Petroleum Resources Development Act (28/2002): Notice regarding consultation with interested and affected persons	4178	12
19	Spatial Planning and Land Use Management Act (16/2013): Erf 2158, Walmer, Port Elizabeth, Eastern Cape 4178	17	
20	Spatial Planning and Land Use Management Act (16/2013): Erf 708, Beacon Bay.....	4178	17
21	Spatial Planning and Land Use Management Act (16/2013): Erf 885, Summerstrand, Port Elizabeth, Eastern Cape	4178	17

LOCAL AUTHORITY NOTICES • PLAASLIKE OWERHEIDS KENNISGEWINGS

20	Local Government: Municipal Property Rates Act (6/2004): Public notice calling for inspection of supplementary valuation roll and lodging of objections	4178	18
26	Spatial Planning and Land Use Management Act (16/2013): Erf 2306, Gonubie	4178	19
27	Spatial Planning and Land Use Management Act (16/2013): Erf 2518, Gonubie	4178	19
28	Land Use Regulations Act (15/1987): Rezoning of a Portion of Farm 1404, East London, Mdantsane NU 2 (Slovo Park)	4178	20
29	Land Use Regulations Act, 15 of 1987: Rezoning of a Portion of Farm 1404, East London, Mdantsane NU2 (Ekuphumleni)	4178	21

Closing times for **ORDINARY WEEKLY** 2019

EASTERN CAPE PROVINCIAL GAZETTE

*The closing time is **15:00** sharp on the following days:*

- **28 December 2018**, Friday for the issue of Monday **07 January 2019**
- **07 January**, Monday for the issue of Monday **14 January 2019**
- **14 January**, Monday for the issue of Monday **21 January 2019**
- **21 January**, Monday for the issue of Monday **28 January 2019**
- **28 January**, Monday for the issue of Monday **04 February 2019**
- **04 February**, Monday for the issue of Monday **11 February 2019**
- **11 February**, Monday for the issue of Monday **18 February 2019**
- **18 February**, Monday for the issue of Monday **25 February 2019**
- **25 February**, Monday for the issue of Monday **04 March 2019**
- **04 March**, Monday for the issue of Monday **11 March 2019**
- **11 March**, Monday for the issue of Monday **18 March 2019**
- **15 March**, Friday for the issue of Monday **25 March 2019**
- **25 March**, Monday for the issue of Monday **01 April 2019**
- **01 April**, Wednesday for the issue of Monday **08 April 2019**
- **08 April**, Monday for the issue of Monday **15 April 2019**
- **12 April**, Friday for the issue of Monday **22 April 2019**
- **18 April**, Thursday for the issue of Monday **29 April 2019**
- **26 April**, Friday for the issue of Monday **06 May 2019**
- **06 May**, Monday for the issue of Monday **13 May 2019**
- **13 May**, Monday for the issue of Monday **20 May 2019**
- **20 May**, Monday for the issue of Monday **27 May 2019**
- **27 May**, Monday for the issue of Monday **03 June 2019**
- **03 June**, Monday for the issue of Monday **10 June 2019**
- **10 June**, Monday for the issue of Monday **17 June 2019**
- **14 June**, Friday for the issue of Monday **24 June 2019**
- **24 June**, Monday for the issue of Monday **01 July 2019**
- **01 July**, Monday for the issue of Monday **08 July 2019**
- **08 July**, Monday for the issue of Monday **15 July 2019**
- **15 July**, Monday for the issue of Monday **22 July 2019**
- **22 July**, Monday for the issue of Monday **29 July 2019**
- **29 July**, Monday for the issue of Monday **05 August 2019**
- **02 August**, Friday for the issue of Monday **12 August 2019**
- **12 August**, Monday for the issue of Monday **19 August 2019**
- **19 August**, Monday for the issue of Monday **26 August 2019**
- **26 August**, Monday for the issue of Monday **02 September 2019**
- **02 September**, Monday for the issue of Monday **09 September 2019**
- **09 September**, Monday for the issue of Monday **16 September 2019**
- **16 September**, Monday for the issue of Monday **23 September 2019**
- **20 September**, Friday for the issue of Monday **30 September 2019**
- **30 September**, Monday for the issue of Monday **07 October 2019**
- **07 October**, Monday for the issue of Monday **14 October 2019**
- **14 October**, Monday for the issue of Monday **21 October 2019**
- **21 October**, Monday for the issue of Monday **28 October 2019**
- **28 October**, Monday for the issue of Monday **04 November 2019**
- **04 November**, Monday for the issue of Monday **11 November 2019**
- **11 November**, Monday for the issue of Monday **18 November 2019**
- **18 November**, Monday for the issue of Monday **25 November 2019**
- **25 November**, Monday for the issue of Monday **02 December 2019**
- **02 December**, Monday for the issue of Monday **09 December 2019**
- **09 December**, Monday for the issue of Monday **16 December 2019**
- **13 December**, Friday for the issue of Monday **23 December 2019**
- **19 December**, Thursday for the issue of Monday **30 December 2019**

LIST OF TARIFF RATES FOR PUBLICATION OF NOTICES

COMMENCEMENT: 1 APRIL 2018

NATIONAL AND PROVINCIAL

Notice sizes for National, Provincial & Tender gazettes 1/4, 2/4, 3/4, 4/4 per page. Notices submitted will be charged at R1008.80 per full page, pro-rated based on the above categories.

Pricing for National, Provincial - Variable Priced Notices		
Notice Type	Page Space	New Price (R)
Ordinary National, Provincial	1/4 - Quarter Page	252.20
Ordinary National, Provincial	2/4 - Half Page	504.40
Ordinary National, Provincial	3/4 - Three Quarter Page	756.60
Ordinary National, Provincial	4/4 - Full Page	1008.80

EXTRA-ORDINARY

All Extra-ordinary National and Provincial gazette notices are non-standard notices and attract a variable price based on the number of pages submitted.

The pricing structure for National and Provincial notices which are submitted as **Extra ordinary submissions** will be charged at **R3026.32** per page.

GOVERNMENT PRINTING WORKS - BUSINESS RULES

The **Government Printing Works (GPW)** has established rules for submitting notices in line with its electronic notice processing system, which requires the use of electronic *Adobe Forms*. Please ensure that you adhere to these guidelines when completing and submitting your notice submission.

CLOSING TIMES FOR ACCEPTANCE OF NOTICES

1. The *Government Gazette* and *Government Tender Bulletin* are weekly publications that are published on Fridays and the closing time for the acceptance of notices is strictly applied according to the scheduled time for each gazette.
2. Please refer to the Submission Notice Deadline schedule in the table below. This schedule is also published online on the Government Printing works website www.gpwonline.co.za

All re-submissions will be subject to the standard cut-off times.

All notices received after the closing time will be rejected.

Government Gazette Type	Publication Frequency	Publication Date	Submission Deadline	Cancellations Deadline
National Gazette	Weekly	Friday	Friday 15h00 for next Friday	Tuesday, 15h00 - 3 working days prior to publication
Regulation Gazette	Weekly	Friday	Friday 15h00 for next Friday	Tuesday, 15h00 - 3 working days prior to publication
Petrol Price Gazette	Monthly	Tuesday before 1st Wednesday of the month	One day before publication	1 working day prior to publication
Road Carrier Permits	Weekly	Friday	Thursday 15h00 for next Friday	3 working days prior to publication
Unclaimed Monies (Justice, Labour or Lawyers)	January / September 2 per year	Last Friday	One week before publication	3 working days prior to publication
Parliament (Acts, White Paper, Green Paper)	As required	Any day of the week	None	3 working days prior to publication
Manuals	Bi- Monthly	2nd and last Thursday of the month	One week before publication	3 working days prior to publication
State of Budget (National Treasury)	Monthly	30th or last Friday of the month	One week before publication	3 working days prior to publication
<i>Extraordinary Gazettes</i>	As required	Any day of the week	<i>Before 10h00 on publication date</i>	<i>Before 10h00 on publication date</i>
Legal Gazettes A, B and C	Weekly	Friday	One week before publication	Tuesday, 15h00 - 3 working days prior to publication
Tender Bulletin	Weekly	Friday	Friday 15h00 for next Friday	Tuesday, 15h00 - 3 working days prior to publication
Gauteng	Weekly	Wednesday	Two weeks before publication	3 days after submission deadline
Eastern Cape	Weekly	Monday	One week before publication	3 working days prior to publication
Northern Cape	Weekly	Monday	One week before publication	3 working days prior to publication
North West	Weekly	Tuesday	One week before publication	3 working days prior to publication
KwaZulu-Natal	Weekly	Thursday	One week before publication	3 working days prior to publication
Limpopo	Weekly	Friday	One week before publication	3 working days prior to publication
Mpumalanga	Weekly	Friday	One week before publication	3 working days prior to publication

GOVERNMENT PRINTING WORKS - BUSINESS RULES

Government Gazette Type	Publication Frequency	Publication Date	Submission Deadline	Cancellations Deadline
Gauteng Liquor License Gazette	Monthly	Wednesday before the First Friday of the month	Two weeks before publication	3 working days after submission deadline
Northern Cape Liquor License Gazette	Monthly	First Friday of the month	Two weeks before publication	3 working days after submission deadline
National Liquor License Gazette	Monthly	First Friday of the month	Two weeks before publication	3 working days after submission deadline
Mpumalanga Liquor License Gazette	Bi-Monthly	Second & Fourth Friday	One week before publication	3 working days prior to publication

EXTRAORDINARY GAZETTES

3. *Extraordinary Gazettes* can have only one publication date. If multiple publications of an *Extraordinary Gazette* are required, a separate Z95/Z95Prov *Adobe* Forms for each publication date must be submitted.

NOTICE SUBMISSION PROCESS

4. Download the latest *Adobe* form, for the relevant notice to be placed, from the **Government Printing Works** website www.gpwonline.co.za.
5. The *Adobe* form needs to be completed electronically using *Adobe Acrobat / Acrobat Reader*. Only electronically completed *Adobe* forms will be accepted. No printed, handwritten and/or scanned *Adobe* forms will be accepted.
6. The completed electronic *Adobe* form has to be submitted via email to submit.egazette@gpw.gov.za. The form needs to be submitted in its original electronic *Adobe* format to enable the system to extract the completed information from the form for placement in the publication.
7. Every notice submitted **must** be accompanied by an official **GPW** quotation. This must be obtained from the *eGazette* Contact Centre.
8. Each notice submission should be sent as a single email. The email **must** contain **all documentation relating to a particular notice submission**.
 - 8.1. Each of the following documents must be attached to the email as a separate attachment:
 - 8.1.1. An electronically completed *Adobe* form, specific to the type of notice that is to be placed.
 - 8.1.1.1. For *National Government Gazette* or *Provincial Gazette* notices, the notices must be accompanied by an electronic Z95 or Z95Prov *Adobe* form
 - 8.1.1.2. The notice content (body copy) **MUST** be a separate attachment.
 - 8.1.2. A copy of the official **Government Printing Works** quotation you received for your notice. (*Please see Quotation section below for further details*)
 - 8.1.3. A valid and legible Proof of Payment / Purchase Order: **Government Printing Works** account customer must include a copy of their Purchase Order. **Non-Government Printing Works** account customer needs to submit the proof of payment for the notice
 - 8.1.4. Where separate notice content is applicable (Z95, Z95 Prov and TForm 3, it should **also** be attached as a separate attachment. (*Please see the Copy Section below, for the specifications*).
 - 8.1.5. Any additional notice information if applicable.

GOVERNMENT PRINTING WORKS - BUSINESS RULES

9. The electronic *Adobe* form will be taken as the primary source for the notice information to be published. Instructions that are on the email body or covering letter that contradicts the notice form content will not be considered. The information submitted on the electronic *Adobe* form will be published as-is.
10. To avoid duplicated publication of the same notice and double billing, Please submit your notice **ONLY ONCE**.
11. Notices brought to **GPW** by "walk-in" customers on electronic media can only be submitted in *Adobe* electronic form format. All "walk-in" customers with notices that are not on electronic *Adobe* forms will be routed to the Contact Centre where they will be assisted to complete the forms in the required format.
12. Should a customer submit a bulk submission of hard copy notices delivered by a messenger on behalf of any organisation e.g. newspaper publisher, the messenger will be referred back to the sender as the submission does not adhere to the submission rules.

QUOTATIONS

13. Quotations are valid until the next tariff change.
 - 13.1. **Take note:** **GPW's** annual tariff increase takes place on **1 April** therefore any quotations issued, accepted and submitted for publication up to **31 March** will keep the old tariff. For notices to be published from 1 April, a quotation must be obtained from **GPW** with the new tariffs. Where a tariff increase is implemented during the year, **GPW** endeavours to provide customers with 30 days' notice of such changes.
14. Each quotation has a unique number.
15. Form Content notices must be emailed to the *eGazette* Contact Centre for a quotation.
 - 15.1. The *Adobe* form supplied is uploaded by the Contact Centre Agent and the system automatically calculates the cost of your notice based on the layout/format of the content supplied.
 - 15.2. It is critical that these *Adobe* Forms are completed correctly and adhere to the guidelines as stipulated by **GPW**.
16. **APPLICABLE ONLY TO GPW ACCOUNT HOLDERS:**
 - 16.1. **GPW** Account Customers must provide a valid **GPW** account number to obtain a quotation.
 - 16.2. Accounts for **GPW** account customers **must** be active with sufficient credit to transact with **GPW** to submit notices.
 - 16.2.1. If you are unsure about or need to resolve the status of your account, please contact the **GPW** Finance Department prior to submitting your notices. (If the account status is not resolved prior to submission of your notice, the notice will be failed during the process).
17. **APPLICABLE ONLY TO CASH CUSTOMERS:**
 - 17.1. Cash customers doing **bulk payments** must use a **single email address** in order to use the **same proof of payment** for submitting multiple notices.
18. The responsibility lies with you, the customer, to ensure that the payment made for your notice(s) to be published is sufficient to cover the cost of the notice(s).
19. Each quotation will be associated with one proof of payment / purchase order / cash receipt.
 - 19.1. This means that the quotation number can only be used once to make a payment.

GOVERNMENT PRINTING WORKS - BUSINESS RULES**COPY (SEPARATE NOTICE CONTENT DOCUMENT)**

20. Where the copy is part of a separate attachment document for Z95, Z95Prov and TForm03
- 20.1. Copy of notices must be supplied in a separate document and may not constitute part of any covering letter, purchase order, proof of payment or other attached documents.
- The content document should contain only one notice. (You may include the different translations of the same notice in the same document).
- 20.2. The notice should be set on an A4 page, with margins and fonts set as follows:
- Page size = A4 Portrait with page margins: Top = 40mm, LH/RH = 16mm, Bottom = 40mm;
Use font size: Arial or Helvetica 10pt with 11pt line spacing;
- Page size = A4 Landscape with page margins: Top = 16mm, LH/RH = 40mm, Bottom = 16mm;
Use font size: Arial or Helvetica 10pt with 11pt line spacing;

CANCELLATIONS

21. Cancellation of notice submissions are accepted by **GPW** according to the deadlines stated in the table above in point 2. Non-compliance to these deadlines will result in your request being failed. Please pay special attention to the different deadlines for each gazette. Please note that any notices cancelled after the cancellation deadline will be published and charged at full cost.
22. Requests for cancellation must be sent by the original sender of the notice and must be accompanied by the relevant notice reference number (N-) in the email body.

AMENDMENTS TO NOTICES

23. With effect from 01 October 2015, **GPW** will not longer accept amendments to notices. The cancellation process will need to be followed according to the deadline and a new notice submitted thereafter for the next available publication date.

REJECTIONS

24. All notices not meeting the submission rules will be rejected to the customer to be corrected and resubmitted. Assistance will be available through the Contact Centre should help be required when completing the forms. (012-748 6200 or email info.egazette@gpw.gov.za). Reasons for rejections include the following:
- 24.1. Incorrectly completed forms and notices submitted in the wrong format, will be rejected.
- 24.2. Any notice submissions not on the correct *Adobe* electronic form, will be rejected.
- 24.3. Any notice submissions not accompanied by the proof of payment / purchase order will be rejected and the notice will not be processed.
- 24.4. Any submissions or re-submissions that miss the submission cut-off times will be rejected to the customer. The Notice needs to be re-submitted with a new publication date.

GOVERNMENT PRINTING WORKS - BUSINESS RULES**APPROVAL OF NOTICES**

25. Any notices other than legal notices are subject to the approval of the Government Printer, who may refuse acceptance or further publication of any notice.
26. No amendments will be accepted in respect to separate notice content that was sent with a Z95 or Z95Prov notice submissions. The copy of notice in layout format (previously known as proof-out) is only provided where requested, for Advertiser to see the notice in final Gazette layout. Should they find that the information submitted was incorrect, they should request for a notice cancellation and resubmit the corrected notice, subject to standard submission deadlines. The cancellation is also subject to the stages in the publishing process, i.e. If cancellation is received when production (printing process) has commenced, then the notice cannot be cancelled.

GOVERNMENT PRINTER INDEMNIFIED AGAINST LIABILITY

27. The Government Printer will assume no liability in respect of—
 - 27.1. any delay in the publication of a notice or publication of such notice on any date other than that stipulated by the advertiser;
 - 27.2. erroneous classification of a notice, or the placement of such notice in any section or under any heading other than the section or heading stipulated by the advertiser;
 - 27.3. any editing, revision, omission, typographical errors or errors resulting from faint or indistinct copy.

LIABILITY OF ADVERTISER

28. Advertisers will be held liable for any compensation and costs arising from any action which may be instituted against the Government Printer in consequence of the publication of any notice.

CUSTOMER INQUIRIES

Many of our customers request immediate feedback/confirmation of notice placement in the gazette from our Contact Centre once they have submitted their notice – While **GPW** deems it one of their highest priorities and responsibilities to provide customers with this requested feedback and the best service at all times, we are only able to do so once we have started processing your notice submission.

GPW has a 2-working day turnaround time for processing notices received according to the business rules and deadline submissions.

Please keep this in mind when making inquiries about your notice submission at the Contact Centre.

29. Requests for information, quotations and inquiries must be sent to the Contact Centre **ONLY**.
30. Requests for Quotations (RFQs) should be received by the Contact Centre at least **2 working days** before the submission deadline for that specific publication.

GOVERNMENT PRINTING WORKS - BUSINESS RULES

PAYMENT OF COST

31. The Request for Quotation for placement of the notice should be sent to the Gazette Contact Centre as indicated above, prior to submission of notice for advertising.
32. Payment should then be made, or Purchase Order prepared based on the received quotation, prior to the submission of the notice for advertising as these documents i.e. proof of payment or Purchase order will be required as part of the notice submission, as indicated earlier.
33. Every proof of payment must have a valid **GPW** quotation number as a reference on the proof of payment document.
34. Where there is any doubt about the cost of publication of a notice, and in the case of copy, an enquiry, accompanied by the relevant copy, should be addressed to the Gazette Contact Centre, **Government Printing Works**, Private Bag X85, Pretoria, 0001 email: info.egazette@gpw.gov.za before publication.
35. Overpayment resulting from miscalculation on the part of the advertiser of the cost of publication of a notice will not be refunded, unless the advertiser furnishes adequate reasons why such miscalculation occurred. In the event of underpayments, the difference will be recovered from the advertiser, and future notice(s) will not be published until such time as the full cost of such publication has been duly paid in cash or electronic funds transfer into the **Government Printing Works** banking account.
36. In the event of a notice being cancelled, a refund will be made only if no cost regarding the placing of the notice has been incurred by the **Government Printing Works**.
37. The **Government Printing Works** reserves the right to levy an additional charge in cases where notices, the cost of which has been calculated in accordance with the List of Fixed Tariff Rates, are subsequently found to be excessively lengthy or to contain overmuch or complicated tabulation.

PROOF OF PUBLICATION

38. Copies of any of the *Government Gazette* or *Provincial Gazette* can be downloaded from the **Government Printing Works** website www.gpwonline.co.za free of charge, should a proof of publication be required.
39. Printed copies may be ordered from the Publications department at the ruling price. The **Government Printing Works** will assume no liability for any failure to post or for any delay in despatching of such *Government Gazette(s)*

GOVERNMENT PRINTING WORKS CONTACT INFORMATION

Physical Address:

Government Printing Works
149 Bosman Street
Pretoria

Postal Address:

Private Bag X85
Pretoria
0001

GPW Banking Details:

Bank: ABSA Bosman Street
Account No.: 405 7114 016
Branch Code: 632-005

For Gazette and Notice submissions: Gazette Submissions:

For queries and quotations, contact: Gazette Contact Centre:

E-mail: submit.egazette@gpw.gov.za

E-mail: info.egazette@gpw.gov.za

Tel: 012-748 6200

Contact person for subscribers: Mrs M. Toka:

E-mail: subscriptions@gpw.gov.za

Tel: 012-748-6066 / 6060 / 6058

Fax: 012-323-9574

PROVINCIAL NOTICES • PROVINSIALE KENNISGEWINGS

PROVINCIAL NOTICE 16 OF 2019

Nelson Mandela Bay Municipality (EASTERN CAPE)

Removal of Restrictions in terms of the Spatial Planning and Land Use Management Act, 2013 (Act 16 of 2013)

ERF 237 AMSTERDAMHOEK, PORT ELIZABETH, EASTERN CAPE

Under Section 47 of the Spatial Planning and Land Use Management Act, 2013 (Act 16 of 2013) and upon instructions by the Local Authority, notice is hereby given that conditions B.5. (b), (c), (d) in Deed of Transfer No.T40626/2010 applicable to Erf 237 Amsterdamhoek are hereby removed.

PROVINCIAL NOTICE 17 OF 2019

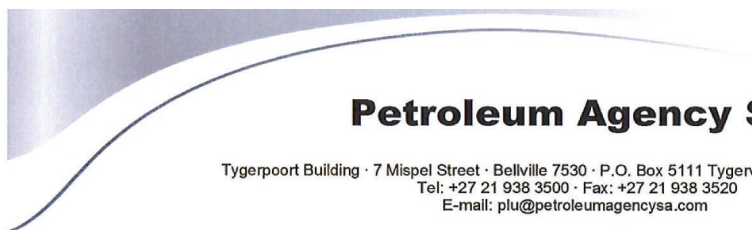
Nelson Mandela Bay Municipality (EASTERN CAPE)

Removal of Restrictions in terms of the Spatial Planning and Land Use Management Act, 2013 (Act 16 of 2013)

ERF 89 KABEGA, PORT ELIZABETH, EASTERN CAPE

Under Section 47 of the Spatial Planning and Land Use Management Act, 2013 (Act 16 of 2013) and upon instructions by the Local Authority, notice is hereby given that conditions B.18. (a), (b), (c), (d) and C.(b), (c), (d) in Deed of Transfer No.T40556/2007 applicable to Erf 89 Kabega are hereby removed.

PROVINCIAL NOTICE 18 OF 2019



NOTICE REGARDING CONSULTATION WITH INTERESTED AND AFFECTED PERSONS IN TERMS OF SECTION 10 READ WITH REGULATION 3 OF THE MINERAL AND PETROLEUM RESOURCES DEVELOPMENT ACT, 2002 (ACT NO. 28 OF 2002)

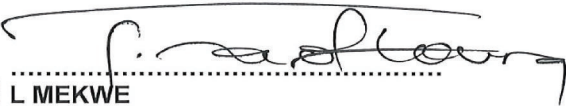
File Ref No: 12/3/351 ER

Notice is hereby given in terms of Section 10 (1) of the Mineral and Petroleum Resources Development Act, 2002 (Act No.28 of 2002) that I, Lindiwe Mekwe, Acting Chief Executive Officer of Petroleum Agency SA, have on the **21st of January 2019** accepted an application for an Exploration Right for **Petroleum** submitted by Gondwana Energy (Pty) Ltd.

APPLICATION DETAILS:	
Date of receipt of application:	04 January 2019
Sketch Plan and co-ordinates depicting the application area, and a list of farms are attached as:	Annexure A1, A2 and A3
Contact Details of the Applicant	Mr. Roy Manson Brebner Gondwana Energy (Pty) Ltd 17 Arthurs Court 222 High Level Road Sea Point Cape Town 8005 Tel: +2721 434 7136 E- Mail: oilrig@mweb.co.za
Contact Details of the Agency	Chief Executive Officer P.O Box 5111 Tygervally 7536 Tel: 021 938 3500 Fax: 021 938 3520 Email: plu@petroleumagency.co.za

Any person wishing to submit comments on the above application should, in accordance with Section 10 (1) (b) of the above Act, do so in writing **within 30 days from date of publication**, for the attention of the **Chief Executive Officer** at the address indicated above.

Dated in Cape Town on the **21st of January 2019**


L MEKWE
ACTING CHIEF EXECUTIVE OFFICER

Directors: MP Fusi (Chairperson)

B Luthuli R Nkambule L Nengovhela L Mekwe (Acting Executive)

Company Secretary: E Hendricks

Subsidiary of CEF SOC Ltd.
 South African Agency for Promotion of Petroleum Exploration and Exploitation SOC Ltd. Registration No. 1999/015715/30

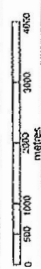


**GONDWANA ENERGY
(PTY) LIMITED**

**Coordinate Map Plan 006
(sheet 1 of 2 sheets)**



W. C. Abrahamse
W. C. Abrahamse (PLS 00023)
Professional Land Surveyor



AREA DESCRIPTION

The figure ABCDEFGHIJKLMNOPQRSTU VW High Water Mark of Indian Ocean X High Water Mark of Indian Ocean Y High Water Mark of Indian Ocean Z A1 B1 C1 D1 E1 F1 G1 H1 J1 represents 20 farms and land portions as annotated and coded on sheet 2, together measuring 7535 hectares of land situated in the Administrative District of Alexandria in the Province of the Eastern Cape

All co-ordinates are in the Hardbeekshoek 94 datum.

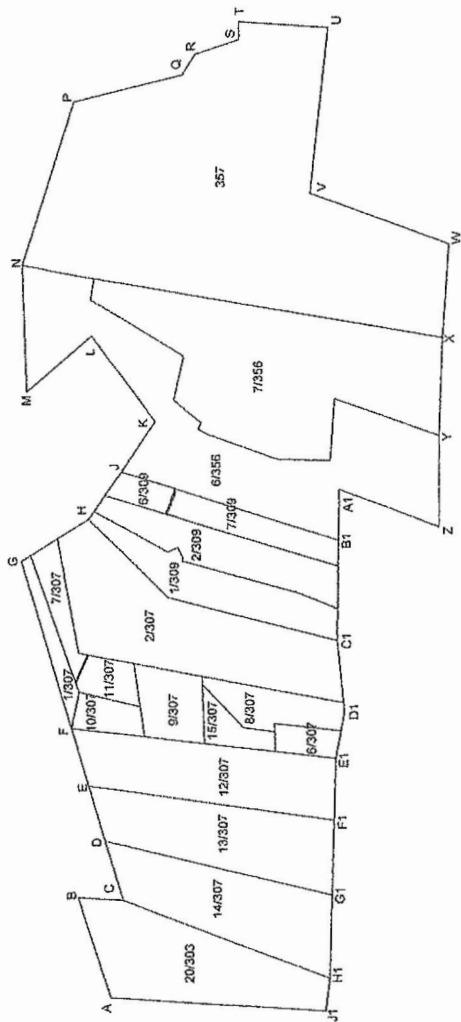
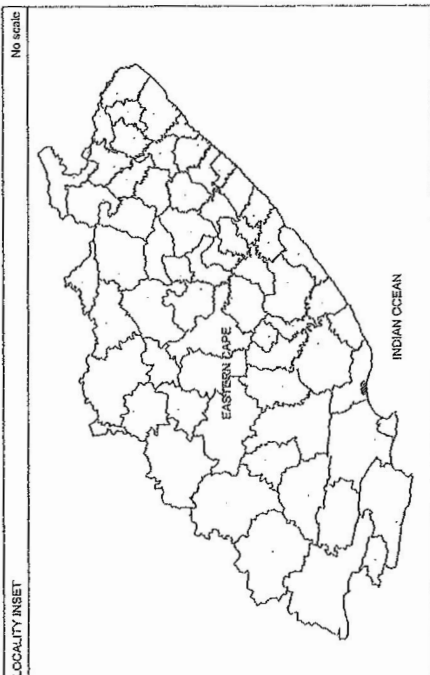
dh+a
david hellig + abrahamso
professional land surveyors
2nd floor wale street chambers
38 wale street, cape town
Tel : +27 021 426 2613
info@dh+a.co.za www.dh+a.co.za

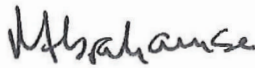
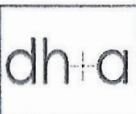
5 May 2017

1 / 75 000	000
------------	-----

of no	L11791
-------	--------

Drawing no.	GE MAP PLAN 000 (Sheet 1 of 2 Sheets)
-------------	---------------------------------------



COORDINATE MAP PLAN 006 ALEXANDRIA DISTRICT WG 25 (WGS84)			GONDWANA ENERGY (Pty) Limited	
NAME	Y CO-ORDINATE	X CO-ORDINATE	(Sheet 2 of 2 Sheets)	
A	-87,028.69	3,725,822.82		
B	-88,682.82	3,725,276.14		
C	-88,629.49	3,726,027.98		
D	-89,608.13	3,725,731.53	FARM NAME	PTN No.
E	-90,512.12	3,725,457.61	SEA VIEW 357	0
F	-91,461.28	3,725,170.02	SPINGMOUNT 356	7
G	-94,206.76	3,724,331.47	SPRINGMOUNT 356	6
H	-94,894.67	3,725,465.68	GROENKOP 309	1
J	-95,671.78	3,726,014.10	GROENKOP 309	2
K	-96,500.69	3,726,593.12	GROENKOP 309	6
L	-97,906.97	3,725,523.96	GROENKOP 309	7
M	-96,992.17	3,724,428.90	CONGASKRAAL 307	2
N	-99,072.09	3,724,360.47	CONGASKRAAL 307	1,6,7,8,9,10,11,15
P	-101,748.41	3,725,241.28	CONGASKRAAL 307	12
Q	-102,187.66	3,727,067.17	CONGASKRAAL 307	13
R	-102,530.85	3,727,294.38	CONGASKRAAL 307	14
S	-102,761.64	3,728,037.21	PLATTERUG 303	20
T	-103,061.95	3,728,035.12	 R. C. Abrahamse (PLS 0002) Professional Land Surveyor	
U	-102,959.99	3,729,531.84		
V	-100,234.57	3,729,221.87		
W	-99,405.30	3,731,556.49		
X	-97,867.59	3,731,445.68		
Y	-96,254.29	3,731,385.94		
Z	-94,761.53	3,731,381.76		
A1	-95,375.96	3,729,690.02		
B1	-94,539.25	3,729,676.81		
C1	-92,891.42	3,729,651.35		
D1	-91,720.75	3,729,769.94		
E1	-90,960.97	3,729,622.49		
F1	-89,941.25	3,729,592.67		
G1	-88,712.02	3,729,556.71		
H1	-87,339.69	3,729,516.64		
J1	-86,797.28	3,729,445.80		
			 david hellig + abrahamse professional land surveyors 2 nd floor wale street chambers 38 wale street Tel: +27 21 426 2613 Cell: +27 63 700 0391 info@dhale.co.za www.dhale.co.za	
			Date	08 May 2017
			Reference No.	L11791
				GE MAP PLAN 006
			Drawing No.	(Sheet 2 of 2 Sheets)

Farm List no 1		Farm List no 2		Farm List no 3	
Original Farm Name:	Springmount	Original Farm Name:	Springmount	Original Farm Name:	Springmount
and Farm Number:	356/ 2	and Farm Number:	356/5	and Farm Number:	356/6
Subdivision name & no.	Sea View 357	Subdivision name & no.	Sea View 356	Subdivision name & no.	Springmount 356

Farm List no 4		Farm List no 5		Farm List no 6	
Original Farm Name:	Groenkop	Original Farm Name:	Groenkop	Original Farm Name:	Groenkop
and Farm Number:	309	and Farm Number:	309	and Farm Number:	309
Subdivision name & no.	Groenkop 3	Subdivision name & no.	Groenkop 2	Subdivision name & no.	Groenkop1

Farm List no 7		Farm List no 8		Farm List no 9	
Original Farm Name:	Congas Kraal	Original Farm Name:	Congas Kraal	Original Farm Name:	Congas Kraal
and Farm Number:	307	and Farm Number:	307	and Farm Number:	307
Subdivision name & no.	Lindney 2	Subdivision name & no.	Congas Kraal 12	Subdivision name & no.	Summer Pride 6

Farm List no 10		Farm List no 11		Farm List no 12	
Original Farm Name:	Congas Kraal	Original Farm Name:	Congas Kraal	Original Farm Name:	Congas Kraal
and Farm Number:	307	and Farm Number:	307	and Farm Number:	307
Subdivision name & no.	Koppie Strand 8	Subdivision name & no.	Koppie Strand 15	Subdivision name & no.	Bethal 9

Farm List no 13		Farm List no 14		Farm List no 15	
Original Farm Name:	Congas Kraal	Original Farm Name:	Congas Kraal	Original Farm Name:	Congas Kraal
and Farm Number:	307	and Farm Number:	307	and Farm Number:	307
Subdivision name & no.	Uitzicht 11	Subdivision name & no.	Ou Werf 10	Subdivision name & no.	Basryk 7

Farm List no 16		Farm List no 17		Farm List no 18	
Original Farm Name:	Congas Kraal	Original Farm Name:	Congas Kraal	Original Farm Name:	Platte Rug
and Farm Number:	307	and Farm Number:	307	and Farm Number:	303/20
Subdivision name & no.	Congas Kraal 13	Subdivision name & no.	Congas Kraal 14	Subdivision name & no.	Platte Rug 20

Farm List no 19		Farm List no 20		Farm List no 21	
Original Farm Name:	The Farm	Original Farm Name:	The Farm	Original Farm Name:	The Farm
and Farm Number:	296	and Farm Number:	296	and Farm Number:	296
Subdivision name & no.	Farm 296 /2	Subdivision name & no.	Farm REM296	Subdivision name & no.	Farm 296 /5

Farm List no 22		Farm List no 23		Farm List no 24	
Original Farm Name:	The Farm	Original Farm Name:	The Farm	Original Farm Name:	The Farm
and Farm Number:	296	and Farm Number:	296	and Farm Number:	296
Subdivision name & no.	Farm 296 /11	Subdivision name & no.	Farm 296 /10	Subdivision name & no.	Farm 296 /9

Farm List no 25		Farm List no 26		Farm List no 27	
Original Farm Name:	The Farm	Original Farm Name:	The Farm	Original Farm Name:	The Farm
and Farm Number:	296	and Farm Number:	296	and Farm Number:	296
Subdivision name & no.	Farm 296 /3	Subdivision name & no.	Farm 296 /6	Subdivision name & no.	Farm 296 /8

Farm List no 28		Farm List no 29		Farm List no 30	
Original Farm Name:	Nanaga Hoogte	Original Farm Name:	Nanaga Hoogte	Original Farm Name:	Nanaga Hoogte
and Farm Number:	299	and Farm Number:	299	and Farm Number:	299
Subdivision name & no.	1	Subdivision name & no.	22	Subdivision name & no.	35

Farm List no 31		Farm List no 32		Farm List no 33	
Original Farm Name:	Nanaga Hoogte	Original Farm Name:	Nanaga Hoogte	Original Farm Name:	Nanaga Hoogte
and Farm Number:	299	and Farm Number:	299	and Farm Number:	299
Subdivision name & no.	26	Subdivision name & no.	10	Subdivision name & no.	11

Farm List no 34		Farm List no 35		Farm List no 36	
Original Farm Name:	Nanaga Hoogte	Original Farm Name:	Nanaga Hoogte	Original Farm Name:	Nanaga Hoogte
and Farm Number:	299	and Farm Number:	299	and Farm Number:	299
Subdivision name & no.	29	Subdivision name & no.	2	Subdivision name & no.	12

Farm List no 37		Farm List no 38		Farm List no 39	
Original Farm Name:	Nanaga Hoogte	Original Farm Name:	Nanaga Hoogte	Original Farm Name:	Nanaga Hoogte
and Farm Number:	299	and Farm Number:	299	and Farm Number:	299
Subdivision name & no.	13	Subdivision name & no.	4	Subdivision name & no.	RE 299

Farm List no 40		Farm List no 41		Farm List no 42	
Original Farm Name:	Nanaga Hoogte	Original Farm Name:	Nanaga Hoogte	Original Farm Name:	Nanaga Hoogte
and Farm Number:	299	and Farm Number:	299	and Farm Number:	299
Subdivision name & no.	30	Subdivision name & no.	27	Subdivision name & no.	14

Farm List no 43		Farm List no 44		Farm List no 45	
Original Farm Name:	Nanaga Hoogte	Original Farm Name:	Nanaga Hoogte	Original Farm Name:	Kinkelbosch
and Farm Number:	299	and Farm Number:	299	and Farm Number:	Outspan 301
Subdivision name & no.	15	Subdivision name & no.	28	Subdivision name & no.	1

Farm List no 46		Farm List no 47		Farm List no 48	
Original Farm Name:	Kinkelbosch	Original Farm Name:	Kinkelbosch	Original Farm Name:	Kinkelbosch
and Farm Number:	Outspan 301	and Farm Number:	Outspan 301	and Farm Number:	Outspan 301
Subdivision name & no.	6	Subdivision name & no.	2	Subdivision name & no.	9

Farm List no 49		Farm List no 50		Farm List no 51	
Original Farm Name:	Kinkelbosch	Original Farm Name:	Kinkelbosch	Original Farm Name:	Kinkelbosch
and Farm Number:	Outspan 301	and Farm Number:	Outspan 301	and Farm Number:	Outspan 301
Subdivision name & no.	3	Subdivision name & no.	14	Subdivision name & no.	15

Farm List no 52		Farm List no 53		Farm List no 54	
Original Farm Name:	Kinkelbosch	Original Farm Name:	Olifants Plaats	Original Farm Name:	Olifants Plaats
and Farm Number:	Outspan 301	and Farm Number:	214	and Farm Number:	214
Subdivision name & no.	RE 301	Subdivision name & no.	1	Subdivision name & no.	REM 214

Farm List no 55		Farm List no 56		Farm List no 57	
Original Farm Name:	Ingelside	Original Farm Name:	Ingelside	Original Farm Name:	Ingelside
and Farm Number:	215	and Farm Number:	216	and Farm Number:	215
Subdivision name & no.	8	Subdivision name & no.	6	Subdivision name & no.	10

Farm List no 58		Farm List no 59		Farm List no 60	
Original Farm Name:	Ingelside	Original Farm Name:	Ingelside	Original Farm Name:	Melville
and Farm Number:	215	and Farm Number:	215	and Farm Number:	308
Subdivision name & no.	9	Subdivision name & no.	4	Subdivision name & no.	3

Farm List no 61		Farm List no 62		Farm List no 63	
Original Farm Name:	Melville	Original Farm Name:	Tanka tara	Original Farm Name:	Tanka tara
and Farm Number:	308	and Farm Number:	643	and Farm Number:	643
Subdivision name & no.	4	Subdivision name & no.	1	Subdivision name & no.	643 REM

Farm List no 64		Farm List no 65		Farm List no 66	
Original Farm Name:		Original Farm Name:		Original Farm Name:	
and Farm Number:		and Farm Number:		and Farm Number:	
Subdivision name & no.		Subdivision name & no.		Subdivision name & no.	

PROVINCIAL NOTICE 19 OF 2019**Nelson Mandela Bay Municipality (EASTERN CAPE)****Removal of Restrictions in terms of the Spatial Planning and Land Use Management Act, 2013 (Act 16 of 2013)****ERF 2158 WALMER, PORT ELIZABETH, EASTERN CAPE**

Under Section 47 of the Spatial Planning and Land Use Management act, 2013 (Act 16 of 2013) and upon instructions by the Local Authority, a notice is hereby given that conditions B6(a), B6(b), B6(c) and B6(d) on page 3 of Deed of Transfer No. T1054/2017CTN applicable to Erf 2158 Walmer, In the Nelson Mandela Bay Metropolitan Municipality, Division of Port Elizabeth, are hereby removed.

4-11

PROVINCIAL NOTICE 20 OF 2019**REMOVAL OF RESTRICTIVE TITLE DEED CONDITIONS : BM HOFERT & DK HOFERT**

In terms of section 47(1) of the Spatial Planning and Land Use Management Act No 16 of 2013, read with section 59 of the Buffalo City Metropolitan Municipal Spatial Planning and Land Use Management Bylaw of 2016, approval is hereby granted for the removal of restrictive title conditions C.4 (a), (b), (c) & (d) found in Deed of Transfer No. T11607/1999, pertaining to Erf 708 Beacon Bay.

Drake Flemmer & Orsmond (EL) Inc
22 St James Road
Southernwood
East London
Tel: 043 722 4210
E-mail: shaun@drakefo.co.za

PROVINCIAL NOTICE 21 OF 2019**Nelson Mandela Bay Municipality (EASTERN CAPE)****Removal of Restrictions in terms of the Spatial Planning and Land Use Management Act, 2013 (Act 16 of 2013)****ERF 885 SUMMERSTRAND, PORT ELIZABETH, EASTERN CAPE**

Under Section 47 of the Spatial Planning and Land Use Management Act, 2013 (Act 16 of 2013) and upon instructions by the Local Authority, notice is hereby given that Conditions C(v)(b) and (d) in Deed of Transfer Number T 6798/2016 CTN applicable to Erf 68 Humewood are hereby removed.

Friedman Scheckter

LOCAL AUTHORITY NOTICES • PLAASLIKE OWERHEIDS KENNISGEWINGS

LOCAL AUTHORITY NOTICE 20 OF 2019

**SENQU MUNICIPALITY****NOTICE 07 /2019****PUBLIC NOTICE CALLING FOR INSPECTION OF SUPPLEMENTARY VALUATION ROLL AND LODGING OF OBJECTION/S**

Notice is hereby given in terms of Section 77 reads with Section 78 (6) of the Local Government: Municipal Property Rates Act, (Act No. 6 of 2004), hereinafter referred to as the "Act", that the supplementary valuation roll for the financial year 2019/2020 is open for public inspection at the Senqu Municipality Offices and public libraries at Lady Grey, Sterkspruit and Barkly East from 28th of January 2019 to 8th of March 2019.

In addition, the supplementary valuation roll is available at the following website: www.senqu.gov.za

An invitation is hereby made in terms of section 78(5)(b) of the Act that any owner of property should lodge a request with the municipal manager in respect of any matter reflected in the supplementary valuation roll within the above-mentioned period.

Attention is specifically drawn to the fact that in terms of section 50(2) of the Act an objection must be in relation to a specific individual property and not against the supplementary valuation roll as such.

The form for the lodging of an objection is obtainable at the following addresses:

Senqu Municipal Offices (<i>Lady Grey Offices</i>) 19 Murray Street Lady Grey 9755	Senqu Municipal Offices (<i>Sterkspruit Offices</i>) 79 Main Street Sterkspruit 9762	Senqu Municipal Offices (<i>Barkly East Offices</i>) Molteno Street Barkly East 9786
--	--	--

or on the website www.senqu.gov.za

(Please use: the following forms when lodging an objection)

Form a: residential (full title and sectional title used for residential purposes)

Form b: properties other than residential or agricultural (e.g. businesses, factories, schools)

Form c: agricultural holdings or farms) and

Form d: Appeal form

The completed forms must be returned to the following address:	Or Posted to the Following Address:
Senqu Municipal Office 19 Murray Street Lady Grey 9755	Senqu Municipality Private Bag X 03 Lady Grey 9755

Please Note that all forms must be clearly marked with the words: **"Supplementary Valuation Objection"**

Objections may also be faxed to [086 585 5302](tel:0865855302) but the onus is on the sender to ensure that the administration of Senqu Municipality receives such faxed objections.

For enquiries please telephone or email

Mr Andile Gushmani : Tel 051 603 1348 mailto: gushmania@senqu.gov.za

Ms Zifikile Luwaca : Tel 051 603 1363 mailto: luwacaz@senqu.gov.za

MR MM YAWA
Municipal Manager

10 January 2019

LOCAL AUTHORITY NOTICE 26 OF 2019

BUFFALO CITY METROPOLITAN MUNICIPALITY**SPLUMA Act No. 16 of 2013: ERF 2306, GONUBIE:
REMOVAL OF RESTRICTIONS**

Under Section 47 (1) of the Spatial Planning and Land Use Management Act, No. 16 of 2013, read with Section 59 of the Buffalo City Metropolitan Municipal Spatial Planning and Land Use Management By-Law of 2016, and upon instruction from the abovementioned municipality, notice is hereby given that following application by the owner of Erf 2306, Gonubie, Conditions C (d), C (e) and C (f) found in Deed of Transfer No. 3895/2008 pertaining to Erf 2306, Gonubie, are hereby removed.

LOCAL AUTHORITY NOTICE 27 OF 2019

BUFFALO CITY METROPOLITAN MUNICIPALITY**SPLUMA Act No. 16 of 2013: ERF 2518, GONUBIE:
REMOVAL OF RESTRICTIONS**

Under Section 47 (1) of the Spatial Planning and Land Use Management Act, No. 16 of 2013, read with Section 59 of the Buffalo City Metropolitan Municipal Spatial Planning and Land Use Management By-Law of 2016, and upon instruction from the abovementioned municipality, notice is hereby given that following application by the owner of Erf 2518, Gonubie, Conditions D (1) and D (2) found in Deed of Transfer No. T109/2010 pertaining to Erf 2518, Gonubie, are hereby removed.

LOCAL AUTHORITY NOTICE 28 OF 2019a) **Buffalo City Metropolitan Municipality**

NOTICE: TOWNSHIP ESTABLISHMENT: (3824)

An application has been submitted for b) **SUBDIVISION & REZONING OF A PORTION OF FARM 1404, EAST LONDON, MDANTSANE NU 2, COMPRISING OF 127 ERVEN FOR RESIDENTIAL, TWO ERVEN FOR HIGH DENSITY RESIDENTIAL, ONE ERF FOR INSTITUTIONAL, ONE ERF FOR BUSINESS PURPOSES AND ROADWAY AREA (SLOVO PARK – MDANTSANE INFILL AREAS).**

on c) **A PORTION OF FARM 1404,** d) **EAST LONDON, MDANTSANE NU2 (SLOVO PARK)**

in terms of section 13 of the Land Use Regulations Act, 15 of 1987.

Further details of the proposed application may be obtained from the municipal offices at e) **THE TOWN PLANNING ENQUIRY COUNTER, FIRST FLOOR, CITY ENGINEERING CENTRE, 26 OXFORD STREET, EAST LONDON.**

During normal office hours and any objections thereto must be lodged in writing with the undersigned by not later than 12h00 on the exactly 21 days after the date of the publication of this notice.

NAME OF MUNICIPALITY: **BUFFALO CITY METROPOLITAN MUNICIPALITY**

ADDRESS OF MUNICIPALITY: **P O BOX 81, EAST LONDON, 5200**

DATE: **04/02/2019**

- a) Name of Municipality
- b) Nature of application
- c) Property description
- d) Name of Township or area
- e) Address of Municipal offices where application can be viewed

A.SIHLAHLA
CITY MANAGER

.....
PROVINCIAL GAZETTE:

ONE INSERTION:

04 FEBRUARY 2019

LOCAL AUTHORITY NOTICE 29 OF 2019a) **Buffalo City Metropolitan Municipality**

NOTICE: TOWNSHIP ESTABLISHMENT: (3823)

An application has been submitted for b) **SUBDIVISION & REZONING OF A PORTION OF FARM 1404, EAST LONDON, MDANTSANE NU 2, COMPRISING OF 62 ERVEN FOR RESIDENTIAL PURPOSES AND ROADWAY AREA (EKUPHUMLENI – MDANTSANE INFILL AREAS).**

on c) **A PORTION OF FARM 1404,** d) **EAST LONDON, MDANTSANE NU2 (EKUPHUMLENI)**

in terms of section 13 of the Land Use Regulations Act, 15 of 1987.

Further details of the proposed application may be obtained from the municipal offices at e) **THE TOWN PLANNING ENQUIRY COUNTER, FIRST FLOOR, CITY ENGINEERING CENTRE, 26 OXFORD STREET, EAST LONDON.**

During normal office hours and any objections thereto must be lodged in writing with the undersigned by not later than 12h00 on the exactly 21 days after the date of the publication of this notice.

NAME OF MUNICIPALITY: **BUFFALO CITY METROPOLITAN MUNICIPALITY**ADDRESS OF MUNICIPALITY: **P O BOX 81, EAST LONDON, 5200**DATE: **04/02/2019**

- a) Name of Municipality
- b) Nature of application
- c) Property description
- d) Name of Township or area
- e) Address of Municipal offices where application can be viewed

A.SIHLAHLA
CITY MANAGER

PROVINCIAL GAZETTE:

ONE INSERTION:

04 FEBRUARY 2019

Printed by and obtainable from the Government Printer, Bosman Street, Private Bag X85, Pretoria, 0001.
Contact Centre Tel: 012-748 6200. eMail: info.egazette@gpw.gov.za
Also available at the Legal Advisory Services, **Province of the Eastern Cape**, Private Bag X0047, Bisho, 5605.
Tel. (040) 635-0052.