

***THE PROVINCE OF
GAUTENG***

***DIE PROVINSIE
GAUTENG***

**Provincial Gazette Extraordinary
Buitengewone Provinsiale Koerant**

Vol. 15

PRETORIA, 15 SEPTEMBER 2009

No. 211

CONTENTS • INHOUD

<i>No.</i>	<i>Page No.</i> <i>Gazette No.</i>
GENERAL NOTICE	
2979 Gauteng Transport Infrastructure Act (8/2001): Proclamation of a provincial railway line in connection with the Gautrain Rapid Rail Link between Pretoria, Johannesburg and the OR Tambo International Airport.....	3 211

GENERAL NOTICE

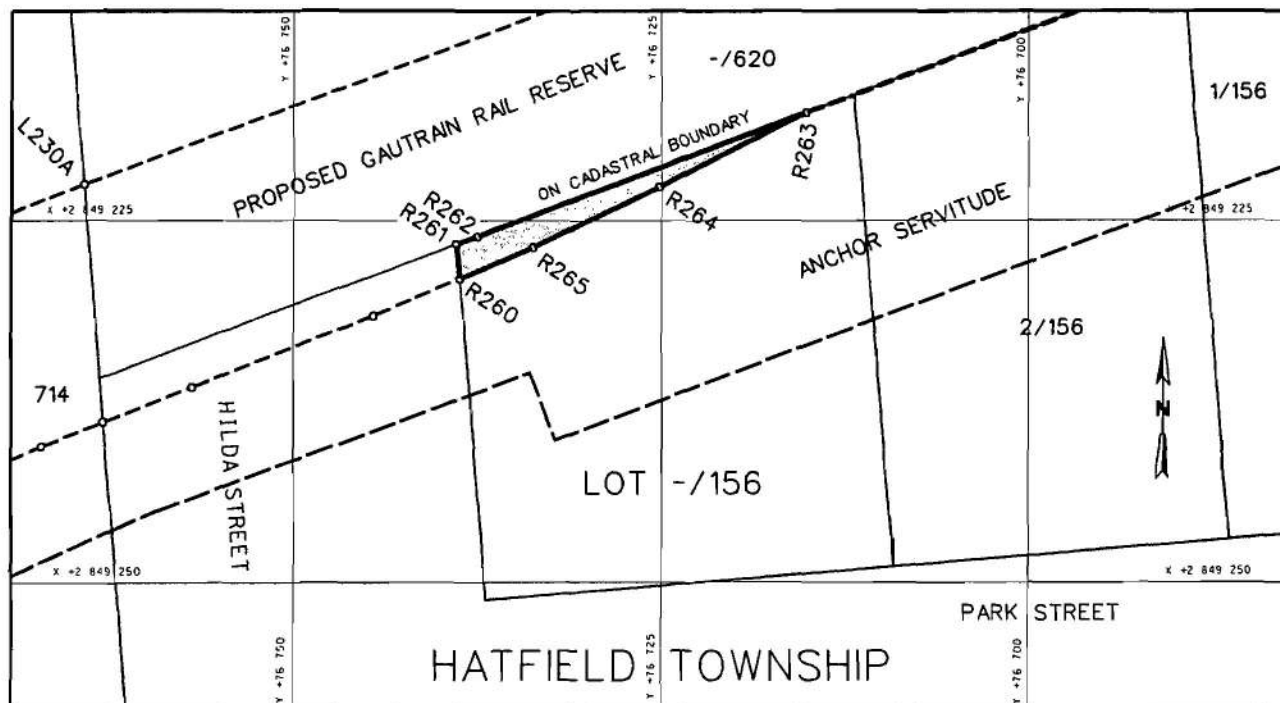
NOTICE 2979 OF 2009

PROCLAMATION OF A PROVINCIAL RAILWAY LINE IN CONNECTION WITH THE GAUTRAIN RAPID RAIL LINK BETWEEN PRETORIA, JOHANNESBURG AND THE O R TAMBO INTERNATIONAL AIRPORT

In terms of section 11(1)(b) of the Gauteng Transport Infrastructure Act, 2001 (Act No 8 of 2001) the MEC hereby proclaims that a provincial railway line, with varying widths, exists on the Remainder of Lot 156 in Hatfield, district Pretoria, as indicated on the accompanying sketch plan.

In terms of section 23(6) of the aforementioned act it is hereby declared that plan GRP 03/38/40 Exp which indicates the land encroached upon by the railway line in detail, is available for inspection at the office of the Department of Roads and Transport, First Floor, South Tower, Sage Life Building, 41 Simmonds Street, Johannesburg, during office hours.

Reference: 2/1/7/8 Gautrain



REFERENCE / VERWYSINGS

GEPROKLAAMEERDE SPOORLYN
PROCLAIMED RAILWAY LINE



PROPOSED GAUTRAIN RAIL RESERVE



DIE FIGUUR : R260 - R265, R260.
THE FIGURE :

VERTEENWOORDIG DIE PROKLAMASIE VAN DIE BETROKKE GEDEELTE VAN DIE SPOORLYN OOR DIE RESTANT VAN LOT 156 IN HATFIELD SOOS BEDOEL BY DIE AFKONDIGING DAARVAN IN DIE PROVINSIALE KOERANT EN IN DETAIL GETOON OP PLAN GRP 03/38/40Exp.

REPRESENTS THE PROCLAMATION OF THE PORTION CONCERNED OF THE RAILWAY LINE OVER THE REMAINDER OF LOT 156 IN HATFIELD AS INTENDED BY THE PUBLICATION THEREOF IN THE PROVINCIAL GAZETTE AND SHOWN IN DETAIL ON PLAN GRP 03/38/40Exp.

BUNDEL NR. / FILE NO. 2/1/7/8-GAUTRAIN

KOÖRDINATE LYS/CO-ORDINATE LIST WG 29° KONST./CONST. Y= +/- 0.00 X= +2 800 000.00

R260	+76738.802	+49229.049	R262	+76737.596	+49226.125	R264	+76725.163	+49222.719
R261	+76738.998	+49226.658	R263	+76715.046	+49217.547	R265	+76733.818	+49226.877