

5

JOHANNESBURG BAR
LIBRARY

**THE PROVINCE OF
GAUTENG**



**DIE PROVINSIE
GAUTENG**

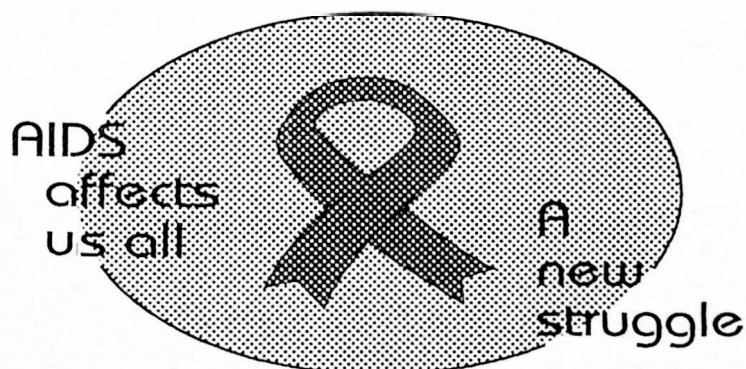
Provincial Gazette Extraordinary Buitengewone Provinsiale Koerant

Vol. 18

**PRETORIA, 14 FEBRUARY 2012
FEBRUARIE**

No. 31

We all have the power to prevent AIDS



Prevention is the cure

**AIDS
HELPLINE**

0800 012 322

DEPARTMENT OF HEALTH

N.B. The Government Printing Works will not be held responsible for the quality of "Hard Copies" or "Electronic Files" submitted for publication purposes



IMPORTANT NOTICE

The Government Printing Works will not be held responsible for faxed documents not received due to errors on the fax machine or faxes received which are unclear or incomplete. Please be advised that an "OK" slip, received from a fax machine, will not be accepted as proof that documents were received by the GPW for printing. If documents are faxed to the GPW it will be the sender's responsibility to phone and confirm that the documents were received in good order.

Furthermore the Government Printing Works will also not be held responsible for cancellations and amendments which have not been done on original documents received from clients.

CONTENTS • INHOUD

No.

Page
No. Gazette
No.**GENERAL NOTICE**

- 327 Gauteng Transport Infrastructure Act (8/2001): Closure of an access road in connection with Provincial Road P1-2 (K101) over Remainder Portion of Portion 1 of the farm Waterval 5 IR District Midrand.....

3

31

GENERAL NOTICE

NOTICE 327 OF 2012

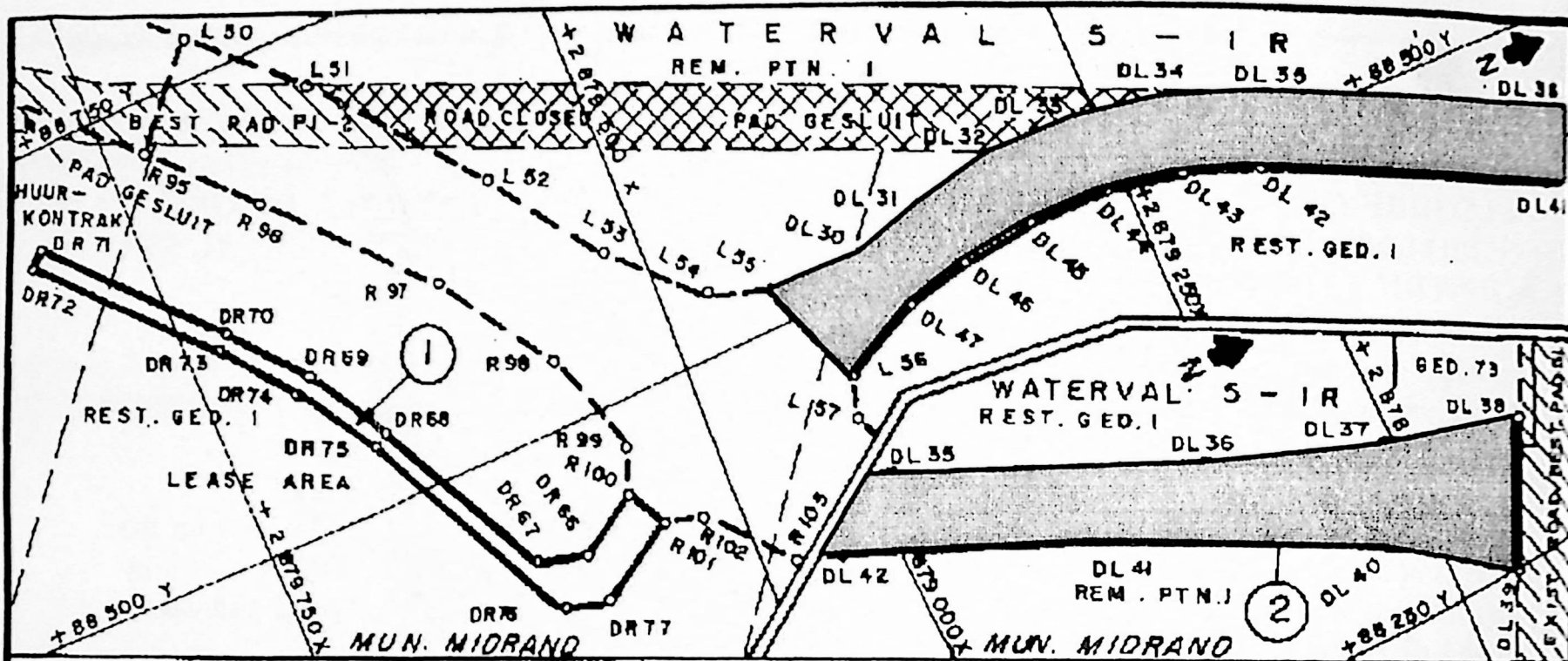
CLOSURE OF AN ACCESS ROAD IN CONNECTION WITH PROVINCIAL ROAD P1-2 (K101) OVER REMAINDER PORTION OF PORTION 1 OF THE FARM WATERVAL 5 IR : DISTRICT MIDRAND

In terms of section 38 (5) of the Gauteng Transport Infrastructure Act, 2001 (Act No 8 of 2001) the MEC hereby proclaim the closure of an access road in connection with Provincial Road P1-2 (k101) on the land as described and indicated by the figure on the accompanying sketch plan.

Boundary beacons, demarcating the aforementioned closure of the road, have been placed on the land concerned and a plan indicating the closure of the road in detail is available for inspection by any interested person during office hours at the office of the Department of Roads and Transport, Sage Life Building, 41 Simmonds Street, Johannesburg.

MEC Resolution: 021 dated 27 September 2011

Referencce: 2/1/1/2/3/1-P1-2 (K101)



VERWYSINGS / REFERENCE

SLUITING VAN TOEGANGSPAD
CLOSURE OF ACCESS ROAD

