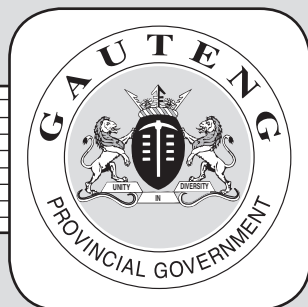


***THE PROVINCE OF
GAUTENG***



***DIE PROVINSIE VAN
GAUTENG***

Provincial Gazette Provinsiale Koerant

EXTRAORDINARY • BUITENGEWOON

Selling price • Verkoopprys: **R2.50**
Other countries • Buitelands: **R3.25**

Vol. 25

PRETORIA
24 OCTOBER 2019
24 OKTOBER 2019

No. 339

We all have the power to prevent AIDS



Prevention is the cure

**AIDS
HELPLINE**

0800 012 322

DEPARTMENT OF HEALTH

N.B. The Government Printing Works will not be held responsible for the quality of "Hard Copies" or "Electronic Files" submitted for publication purposes

ISSN 1682-4525



9 771682 452005

00339



IMPORTANT NOTICE OF OFFICE RELOCATION

GOVERNMENT PRINTING WORKS PUBLICATIONS SECTION

Dear valued customer,

We would like to inform you that with effect from the 1st of November 2019, the Publications Section will be relocating to a new facility at the corner of **Sophie de Bruyn** and **Visagie Street, Pretoria**. The main telephone and facsimile numbers as well as the e-mail address for the Publications Section will remain unchanged.

Our New Address:
88 Visagie Street
Pretoria
0001

Should you encounter any difficulties in contacting us via our landlines during the relocation period, please contact:

Ms Maureen Toka
Assistant Director: Publications
Cell: 082 859 4910
Tel: 012 748-6066

We look forward to continue serving you at our new address, see map below for our new location.



IMPORTANT NOTICE:

THE GOVERNMENT PRINTING WORKS WILL NOT BE HELD RESPONSIBLE FOR ANY ERRORS THAT MIGHT OCCUR DUE TO THE SUBMISSION OF INCOMPLETE / INCORRECT / ILLEGIBLE COPY.

No FUTURE QUERIES WILL BE HANDLED IN CONNECTION WITH THE ABOVE.

CONTENTS

Gazette *Page*
No. *No.*

PROCLAMATION • PROKLAMASIE

119	Gauteng Transport Infrastructure Act (8/2001): Proclamation of provincial road K33 between K52 (P39-1) and D1027 and the access roads: District: Johannesburg/Mogale	339	4
-----	--	-----	---

PROCLAMATION • PROKLAMASIE

PROCLAMATION 119 OF 2019**PROCLAMATION OF PROVINCIAL ROAD K33 BETWEEN K52 (P39-1) AND D1027 AND THE ACCESS ROADS: DISTRICT: JOHANNESBURG/MOGALE**

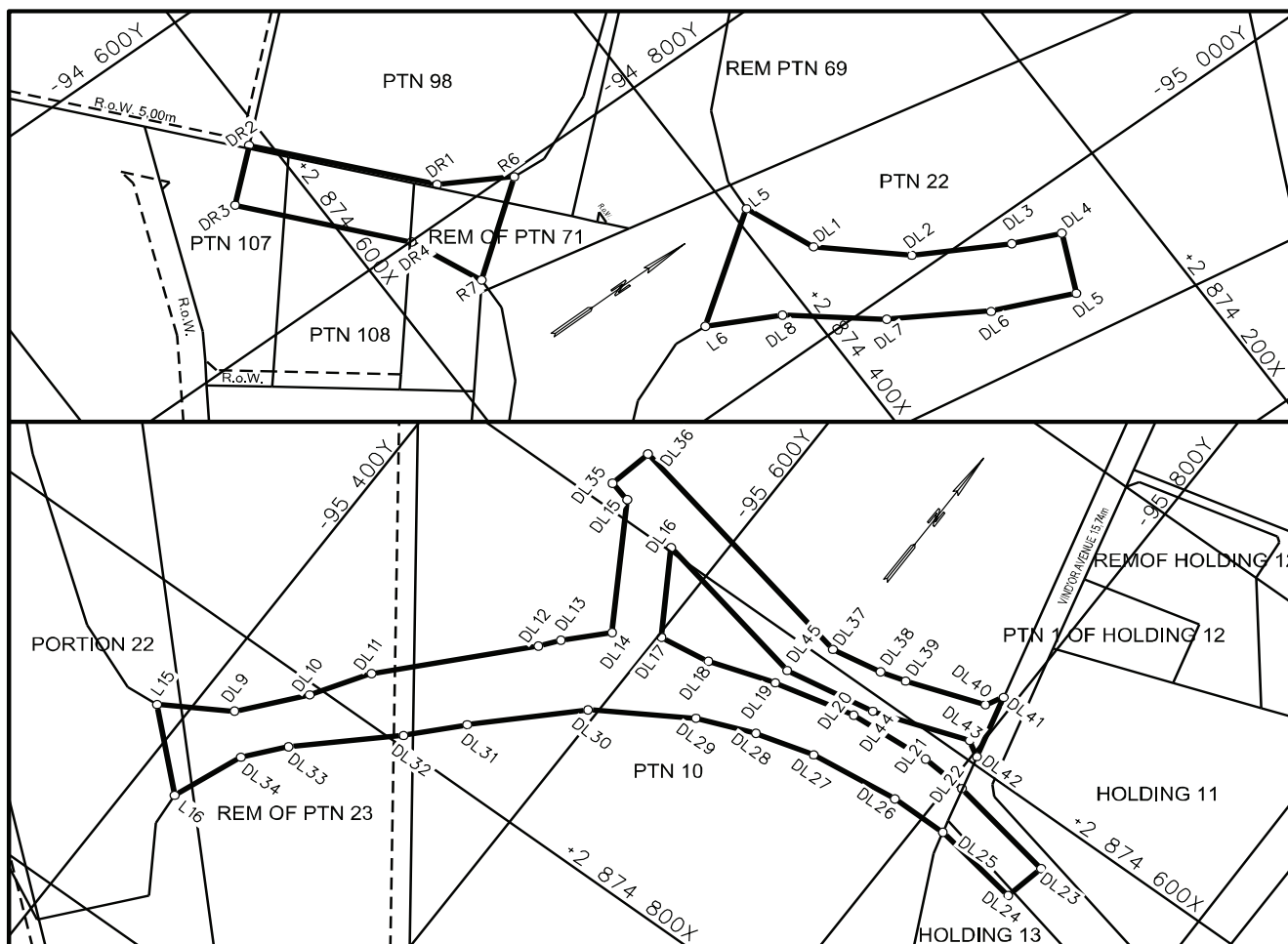
In terms of the Gauteng Transport Infrastructure Act, 2001 (Act No. 8 of 2001) the MEC responsible for provincial roads in Gauteng hereby, proclaims that the road K33 between K52 (P39-1) and D1027 will exist on the land in terms of section 11(1)(b) as a provincial road, and proclaim the access roads in connection with K33 in terms of section 13 of the Act indicated on the accompanying sketch plans.

In terms of section 23(6) of the aforementioned act it is hereby declared that boundary beacons demarcating the said increase in width and access roads of portions of the above-mentioned provincial road, have been placed and that plan GRP17/31/1Exp indicating the land encroached upon is available for inspection by any interested person in the Plan Room of the Department of Roads and Transport, 1215 Nico Smit street, Koedoespoort, Moregloed Pretoria.

Reference: 2/1/1/7/1-K33

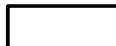
MEC Resolution: 002

Dated: 01 October 2019



REFERENCE

ROAD PROCLAIMED



THE FIGURES : DR2, DR1, R6, R7, DR4-DR2.

L5, DL1-DL8, L6, L15.

L15, DL9-DL15, DL35-DL45, DL16-DL34, L16, L15.

REPRESENTS THE PROCLAMATION OF ACCESS ROADS TO PROVINCIAL ROAD K33 OVER PORTIONS 10, 22, 98, 107, 108, REMAINDER OF PORTIONS 23 & 71 OF THE FARM NIETGEDACHT 535-JQ AND HOLDING 13 OF NORTH CHAMPAGNE ESTATES A/H AS INTENDED BY PUBLICATION THEREOF IN THE PROVINCIAL GAZETTE AND SHOWN IN DETAIL ON PLANS GRP 17/31/EXP

BUNDEL NR. / FILE NO. 10/4/1/4-K33

KOÖRDINATE LYS/CO-ORDINATE LIST WG 27° KONST./CONST. Y= +/- 0.00 X= +2 800 000.00

L5	-94 904.292	+74 391.216	DL13	-95 554.157	+74 686.501	DL32	-95 514.648	+74 793.559
L6	-94 951.093	+74 456.659	DL14	-95 576.236	+74 663.790	DL33	-95 462.877	+74 841.471
L15	-95 382.067	+74 867.526	DL15	-95 531.800	+74 589.062	DL34	-95 443.543	+74 864.411
L16	-95 426.013	+74 908.487	DL16	-95 571.828	+74 597.954	DL35	-95 518.203	+74 585.691
R6	-94 803.551	+74 492.908	DL17	-95 602.277	+74 648.276	DL36	-95 524.120	+74 557.464
R7	-94 845.856	+74 548.901	DL18	-95 634.491	+74 643.608	DL37	-95 690.685	+74 591.793
DL1	-94 948.515	+74 372.933	DL19	-95 675.522	+74 630.307	DL38	-95 722.639	+74 586.183
DL2	-94 988.435	+74 327.808	DL20	-95 726.592	+74 618.530	DL39	-95 738.514	+74 581.698
DL3	-95 018.409	+74 274.311	DL21	-95 778.837	+74 615.154	DL40	-95 786.713	+74 565.099
DL4	-95 031.160	+74 245.710	DL22	-95 808.032	+74 617.223	DL41	-95 792.691	+74 554.475
DL5	-95 067.834	+74 261.679	DL23	-95 877.812	+74 630.010	DL42	-95 802.792	+74 595.019
DL6	-95 046.541	+74 309.675	DL24	-95 872.330	+74 656.101	DL43	-95 792.963	+74 589.388
DL7	-95 012.882	+74 364.854	DL25	-95 815.614	+74 646.968	DL44	-95 734.289	+74 609.579
DL8	-94 973.177	+74 414.531	DL26	-95 779.208	+74 647.151	DL45	-95 676.535	+74 619.569
DL9	-95 422.537	+74 842.783	DL27	-95 722.440	+74 653.734	DR1	-94 779.543	+74 533.817
DL10	-95 452.826	+74 806.845	DL28	-95 685.774	+74 663.771	DR2	-94 691.210	+74 611.032
DL11	-95 474.781	+74 773.037	DL29	-95 650.603	+74 677.883	DR3	-94 717.535	+74 641.148
DL12	-95 545.446	+74 697.689	DL30	-95 594.708	+74 712.757	DR4	-94 800.598	+74 568.540
			DL31	-95 541.402	+74 764.809			

Printed by the Government Printer, Bosman Street, Private Bag X85, Pretoria, 0001,
for the **Gauteng Provincial Administration**, Johannesburg.

Contact Centre Tel: 012-748 6200. eMail: info.egazette@gpw.gov.za
Publications: Tel: (012) 748 6053, 748 6061, 748 6065