



KWAZULU-NATAL PROVINCE
KWAZULU-NATAL PROVINSIE
ISIFUNDAZWE SAKWAZULU-NATALI

Provincial Gazette • Provinsiale Koerant • Igazethi Yesifundazwe

GAZETTE EXTRAORDINARY – BUITENGEWONE KOERANT – IGAZETHI EYISIPESHELI

(Registered at the post office as a newspaper) • (As 'n nuusblad by die poskantoor geregistreer)
(Irejistiwee njengephephandaba eposihhovisi)

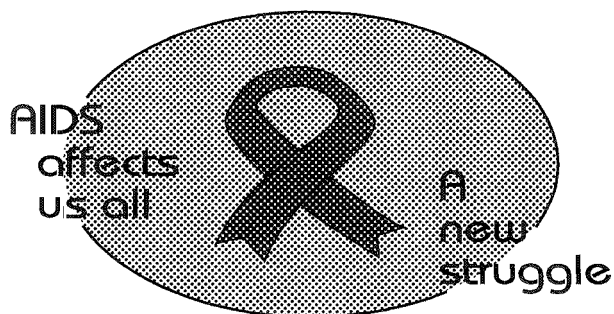
Vol. 4

PIETERMARITZBURG,

17 JUNE 2010
17 JUNIE 2010
17 kuNHLANGULANA 2010

No. 456

We all have the power to prevent AIDS



**AIDS
HELPLINE**

0800 012 322

DEPARTMENT OF HEALTH

Prevention is the cure

N.B. The Government Printing Works will not be held responsible for the quality of "Hard Copies" or "Electronic Files" submitted for publication purposes



9771994455008

IMPORTANT NOTICE

The Government Printing Works will not be held responsible for faxed documents not received due to errors on the fax machine or faxes received which are unclear or incomplete. Please be advised that an "OK" slip, received from a fax machine, will not be accepted as proof that documents were received by the GPW for printing. If documents are faxed to the GPW it will be the sender's responsibility to phone and confirm that the documents were received in good order.

Furthermore the Government Printing Works will also not be held responsible for cancellations and amendments which have not been done on original documents received from clients.

CONTENTS*No.**Page***GENERAL NOTICE**

- 57 Local Government: Municipal Structures Act (117/1998): Municipal Demarcation Board: Delimitation of municipal wards: Maphumulo Local Municipality (KZN294)

3

INHOUD*No.**Bladsy***ALGEMENE KENNISGEWING**

- 57 Wet op Plaaslike Regering: Munisipale Strukture (117/1998): Munisipale Afbakingsraad: Afbakening van munisipale wyke: Maphumulo Plaaslike Munisipaliteit (KZN294)

8

GENERAL NOTICE – ALGEMENE KENNISGEWING

No. 57**17 June 2010****MUNICIPAL DEMARCATION BOARD
DELIMITATION OF MUNICIPAL WARDS IN TERMS OF THE LOCAL
GOVERNMENT: MUNICIPAL STRUCTURES ACT, 1998****Municipality : Maphumulo Local Municipality (KZN294)**

In terms of Item 5(1) of Schedule 1 to the Local Government: Municipal Structures Act, 1998 (Act No.117 of 1998) ("the Act") the Municipal Demarcation Board hereby publishes its delimitation of wards for the above-mentioned municipality. Particulars of the delimitation are listed in the Schedule.

In terms of Item 5(2) of Schedule 1 to the Act, any person aggrieved by a delimitation may, within 14 days of publication of this notice, submit objections in writing to:

The Municipal Demarcation Board
Private Bag X28
Hatfield
0028

Fax: 012-3422480

E-mail: robert@demarcation.org.za

The attached form MDB5 must please be used to object. The form is also available on www.demarcation.org.za

LANDIWE MAHLANGU
CHAIRPERSON: MDB

SCHEDULE

In terms of Section 18(3) of the Local Government: Municipal Structures Act, 1998 (Act 117 of 1998) the MEC responsible for local government has determined that the municipal council consists of 22 councillors.

After having consulted the Independent Electoral Commission, The Municipal Demarcation Board has delimited the municipality into 11 wards in terms of Schedule 1 to the Act.

The number of registered voters in each ward does not vary by more than fifteen percent from the norm. The norm was determined by dividing the total number of voters on the municipal segment of the national common voters roll, namely 41346 voters on 12 February 2009, by the number of wards in the municipality.

An overview map of the boundary of the municipality, with the boundaries of the wards within the municipal boundary, and a map of each ward are attached. In case of a discrepancy between a map and this schedule, the map will prevail.

The ward numbers, the voting districts and voting stations in each ward, and the number of voters are as follows:

WARD 1 comprises of a total of 4087 registered voters

Voting District	Voting Station	Number of Voters
43770023	MANDLALATHI SCHOOL	337
43770034	THETHANDABA SCHOOL	396
43770056	EWOSI-VULEKA SCHOOL	492
43770191	UNTUNJAMBILI SCHOOL	1259
43773790	NGCOLOSI SENIOR SCHOOL	972
43774522	JEHOVA NGIHLERGE CRECHE	631

WARD 2 comprises of a total of 3610 registered voters

Voting District	Voting Station	Number of Voters
43770012	HLANGABEZA SCHOOL	416
43770067	HLUPHIZWE SCHOOL	343
43770078	NOKUBUSA SCHOOL	534
43770089	SONDOKIULU SCHOOL	364
43770146	DINGIZWE SCHOOL	248
43770157	KWANGQUNGQUSHE SCHOOL	421
43770179	ENDANDATHWENI SCHOOL	430
43770180	MAMBULU SCHOOL	462
43773813	ESESE LP SCHOOL	196
43773857	ENYOKENI COMBINED PRIMARY SCHOOL	196

WARD 3 comprises of a total of 3359 registered voters

Voting District	Voting Station	Number of Voters
43581012	ESIHLUSIWANENI SCHOOL	317
43581023	EMBUSWENI SCHOOL	249
43581045	JONASE SCHOOL	771
43581067	MASIWELA SCHOOL	442
43583799	MBULWINI SCHOOL	131
43583856	INKONJANE	315
43584262	THALA SCHOOL	130
43584273	ZIBUSELE SHOP	119
43770090	MZWANGEDWA HIGH SCHOOL	335
43770102	MPHISE HIGHER PRIMARY SCHOOL	550

WARD 4 comprises of a total of 4306 registered voters

Voting District	Voting Station	Number of Voters
43580224	MAQUMBI SCHOOL	959
43580729	OTIMATI SCHOOL	752
43580886	ISIBANISEZWE HIGH SCHOOL	682
43581102	MVUMASE SCHOOL	281
43581113	SIYACOTHIZA SCHOOL	212
43581146	NSUNGWINI SCHOOL	523
43582068	EZITHABENI SCHOOL	544
43584329	MANKAYTYANA SCHOOL	353

WARD 5 comprises of a total of 3511 registered voters

Voting District	Voting Station	Number of Voters
43770124	PHEZUKOMKHONO HIGH SCHOOL	1359
43770326	OGAGWINI SCHOOL	380
43770337	MENYEZWAYO SCHOOL	297
43773543	KHOMBA SCHOOL	607
43773947	INHLOKOZI HIGH SCHOOL	437
43774229	KHETHOKUHLE CRECHE	191
43774724	VULAMEHLO HALL	240

WARD 6 comprises of a total of 3603 registered voters

Voting District	Voting Station	Number of Voters
43583474	UMPHUMULO SCHOOL	776
43583632	MBITANE SCHOOL	333
43770281	BALCOMB'S HILL PRIMARY SCHOOL	528
43770292	VUMA SCHOOL	197
43770348	HOMOYI LOWER PRIMARY SCHOOL	270
43770427	MABOMVINI TRIBAL COURT	531
43770438	DANGAZELA SCHOOL	92
43773846	VUKUZENZELE SCHOOL	195
43774230	MASIPHILE HALL	571
43774713	TEMPORARY VOTING STATION (NKANGALA)	110

WARD 7 comprises of a total of 3351 registered voters

Voting District	Voting Station	Number of Voters
43580875	SAKHISIZWE SCHOOL	598
43581371	MESENI SCHOOL	386
43581416	QWABE SCHOOL	411
43582136	MOBILE (ESINAMFINI COMMUNITY HALL)	720
43582158	EMTHANDENI SCHOOL	695
43582170	MANSOMINI COMMUNITY HALL	205
43584295	FUNDANI SCHOOL	336

WARD 8 comprises of a total of 4262 registered voters

Voting District	Voting Station	Number of Voters
43580505	AMAQADI COURT HOUSE	289
43580640	THOLULWAZI MANTAMBO CRECHE	329
43580707	IKHUSANA SCHOOL	549
43580864	IMUSHANE SCHOOL	363
43582091	MPUSHINI TRIBAL COURT	417
43582125	QWABE-MTHANDENI TRIBAL COURT	421
43582147	MPUMLWANE SCHOOL	361
43582169	EMBONQENI SCHOOL	377
43582181	EZAGQAYINI COMMUNITY HALL	441
43583867	UBUHLEBEMBIZA SCHOOL	231
43584150	SMINDLO'S TUCK SHOP	201
43584284	MOYAMUHLE SCHOOL	283

WARD 9 comprises of a total of 3969 registered voters

Voting District	Voting Station	Number of Voters
43580741	DLUDLA SCHOOL	691
43580921	SABUYAZE SCHOOL	490
43582079	PHAKADE SCHOOL	599
43583722	UKUKHANYAKWEZWE	364
43583733	ENDLELENI SCHOOL	448
43583878	NYAMAZANE PRIMARY SCHOOL	788
43583889	SIPHINHLANHLA HIGH SCHOOL	194
43584149	MAZISI NTULI SCHOOL	395

WARD 10 comprises of a total of 3660 registered voters

Voting District	Voting Station	Number of Voters
43580897	NSONGANSONGA SCHOOL	942
43581078	ZAMAZISA SCHOOL	626
43581089	WOZA TRIBAL COURT	1305
43583890	MAPHUMULO RESOURCE CENTRE	787

WARD 11 comprises of a total of 3628 registered voters

Voting District	Voting Station	Number of Voters
43580628	EMKHOVINI HALL	337
43580639	MAPHUMULO SCHOOL	251
43581090	SIPHAMANDLA SCHOOL	605
43770304	OCHENI SCHOOL	461
43770315	ESINDI SCHOOL	510
43770528	ESIQHOQHWENI SCHOOL	212
43770551	ISITHUNDU SCHOOL	397
43772564	HLIMBITWA COMBINED PRIMARY SCHOOL	382
43773969	NOTHWENI LP SCHOOL	288
43774511	KWANOFOLLA CRECHE	185

Important: This Schedule contains the total number of registered voters on the municipality's segment of the national common voters' roll on 12 February 2009 as provided for in Government Notice No. 750 published in Government Gazette No. 32407 of 15 July 2009. The voting district numbers, the voting district boundaries, voting stations, and the number of voters may change after the registration of voters for the 2011 local elections.

FORM MDB5

WARD DELIMITATION

OBJECTION IN TERMS OF ITEM 5(2) OF SCHEDULE 1 TO THE
LOCAL GOVERNMENT: MUNICIPAL STRUCTURES ACT, 1998

Name of municipality:.....Code:.....

Name of aggrieved person/institution:.....

Contact person in case of an institution:.....

Address:.....

Tel. number:.....Cell number:.....

Email address:.....

I hereby object to the delimitation of the boundaries of the following wards:

WARD NUMBER	REASON/MOTIVATION

I request the Municipal Demarcation Board to consider the following alternative proposals:

Ward number	The ward should comprise of the following voting districts (Provide voting district number and the number of voters in brackets e.g. VD1123456(1500)+VD345678(2500)=4000)	Motivation

I confirm that:

- each cluster of voting districts form a contiguous ward;
- the number of voters in each ward fall within the minimum and maximum of voters allowed per ward;
- the proposed ward boundaries comply, in general, with the criteria.

SIGNATURE

NAME AND SURNAME

DATE

No. 57

17 Junie 2010

**MUNISIPALE AFBAKENINGSRAAD
AFBAKENING VAN MUNISIPALE WYKE INGEVOLGE DIE WET OP
PLAASLIKE REGERING: MUNISIPALE STRUKTURE, 1998**

Munisipaliteit : Maphumulo Plaaslike Munisipaliteit (KZN294)

Ingevolge Item 5(1) van Bylae 1 van die Wet op Plaaslike Regering: Munisipale Strukture, 1998 (Wet No. 117 van 1998) ("die Wet") publiseer die Munisipale Afbakeningsraad hiermee sy afbakening van wyke vir die bogenaaamde munisipaliteit. Besonderhede van die afbakening is vervat in die Bylae.

Ingevolge Item 5(2) van Bylae 1 van die Wet, kan enige persoon wat gegrief is deur 'n afbakening binne 14 dae na publikasie van hierdie kennisgewing skriftelike besware voorlê aan:

Die Munisipale Afbakeningsraad

Privaatsak X28

Hatfield

0028

Faks: 012-3422480

E-pos: robert@demarcation.org.za

Die aangehegte vorm MDB5 moet asseblief gebruik word om beswaar aan te teken. Die vorm is ook beskikbaar op www.demarcation.org.za

LANDIWE MAHLANGU

VOORSITTER: MUNISIPALE AFBAKENINGSRAAD

BYLAE

Ingevolge Artikel 18(3) van die Wet op Plaaslike Regering: Munisipale Strukture, 1998 (Wet 117 van 1998) het die LUR vir plaaslike regering bepaal dat die munisipale raad bestaan uit 22 raadslede.

Na oorlegpleging met die Onafhanklike Verkiesingskommissie het die Munisipale Afbakeningsraad die munisipaliteit in 11 wyke afgebaken ingevolge Bylae 1 van die Wet.

Die getal geregistreerde kiesers in elke wyk, wyk nie meer as vyftien persent van die norm af nie. Die norm is bepaal deur die getal geregistreerde kiesers op die munisipale segment van die nasionale gemeenskaplike kieserslys, naamlik 41346 kiesers op 12 Februarie 2009, deur die getal wyke in die munisipaliteit te deel.

'n Oorsigkaart van die munisipale grens met die grense van die wyke binne die munisipale grens, en 'n kaart van elke wyk, is aangeheg. Ingeval van 'n verskil tussen 'n kaart en hierdie bylae, sal die kaart geld.

Die wyknommers, die stemdistrikte en stemlokale in elke wyk, en die getal kiesers is as volg:

WYK 1 het 4087 kiesers

Stemdistrik	Stemlokaal	Getal kiesers
43770023	MANDLALATHI SCHOOL	337
43770034	THETHANDABA SCHOOL	396
43770056	EWOSI-VULEKA SCHOOL	492
43770191	UNTUNJAMBILI SCHOOL	1259
43773790	NGCOLOSI SENIOR SCHOOL	972
43774522	JEHOVA NGIHLERGE CRECHE	631

WYK 2 het 3610 kiesers

Stemdistrik	Stemlokaal	Getal kiesers
43770012	HLANGABEZA SCHOOL	416
43770067	HLUPHIZWE SCHOOL	343
43770078	NOKUBUSA SCHOOL	534
43770089	SONDOKHULU SCHOOL	364
43770146	DINGIZWE SCHOOL	248
43770157	KWANGQUNGQUSHE SCHOOL	421
43770179	ENDANDATHWENI SCHOOL	430
43770180	MAMBULU SCHOOL	462
43773813	ESESE LP SCHOOL	196
43773857	ENYOKENI COMBINED PRIMARY SCHOOL	196

WYK 3 het 3359 kiesers

Stemdistrik	Stemlokaal	Getal kiesers
43581012	ESIIILUSI IWANENI SCHOOL	317
43581023	EMBUSWENI SCHOOL	249
43581045	JONASE SCHOOL	771
43581067	MASIWELA SCHOOL	442
43583799	MBULWINI SCHOOL	131
43583856	INKONJANE	315
43584262	THALA SCHOOL	130
43584273	ZIBUSELE SHOP	119
43770090	MZWANGEDWA HIGH SCHOOL	335
43770102	MPHISE HIGHER PRIMARY SCHOOL	550

WYK 4 het 4306 kiesers

Stemdistrik	Stemlokaal	Getal kiesers
43580224	MAQUMBI SCHOOL	959
43580729	OTIMATI SCHOOL	752
43580886	ISIBANISEZWE HIGH SCHOOL	682
43581102	MVUMASE SCHOOL	281
43581113	SIYACOTHOZA SCHOOL	212
43581146	NSUNGWINI SCHOOL	523
43582068	EZITHABENI SCHOOL	544
43584329	MANKAYIYANA SCHOOL	353

WYK 5 het 3511 kiesers

Stemdistrik	Stemlokaal	Getal kiesers
43770124	PHEZUKOMKHONO HIGH SCHOOL	1359
43770326	OGAGWINI SCHOOL	380
43770337	MENYEZWAYO SCHOOL	297
43773543	KHOMBA SCHOOL	607
43773947	INHLOKOZI HIGH SCHOOL	437
43774229	KHETHOKUHLE CRECHE	191
43774724	VULAMEHLO HALL	240

WYK 6 het 3603 kiesers

Stemdistrik	Stemlokaal	Getal kiesers
43583474	UMPHUMULO SCHOOL	776
43583632	MBITANE SCHOOL	333
43770281	BALCOMB'S HILL PRIMARY SCHOOL	528
43770292	VUMA SCHOOL	197
43770348	HOMOYI LOWER PRIMARY SCHOOL	270
43770427	MABOMVINI TRIBAL COURT	531
43770438	DANGAZELA SCHOOL	92
43773846	VUKUZENZELE SCHOOL	195
43774230	MASIPHILE HALL	571
43774713	TEMPORARY VOTING STATION (NKANGALA)	110

WYK 7 het 3351 kiesers

Stemdistrik	Stemlokaal	Getal kiesers
43580875	SAKHISIZWE SCHOOL	598
43581371	MESENI SCHOOL	386
43581416	QWABE SCHOOL	411
43582136	MOBILE (ESINAMFINI COMMUNITY HALL)	720
43582158	EMTHANDENI SCHOOL	695
43582170	MANSOMINI COMMUNITY HALL	205
43584295	FUNDANI SCHOOL	336

WYK 8 het 4262 kiesers

Stemdistrik	Stemlokaal	Getal kiesers
43580505	AMAQADI COURT HOUSE	289
43580640	THOLULWAZI MANTAMBO CRECHE	329
43580707	IKHUSANA SCHOOL	549
43580864	IMUSHANE SCHOOL	363
43582091	MPUSHINI TRIBAL COURT	417
43582125	QWABE-MTHANDENI TRIBAL COURT	421
43582147	MPUMLWANE SCHOOL	361
43582169	EMBONQENI SCHOOL	377
43582181	EZAGQAYINI COMMUNITY HALL	441
43583867	UBUHLEBEMBIZA SCHOOL	231
43584150	SMINDI.O'S TUCK SHOP	201
43584284	MOYAMUHLE SCHOOL	283

WYK 9 het 3969 kiesers

Stemdistrik	Stemlokaal	Getal kiesers
43580741	DLUDLA SCHOOL	691
43580921	SABUYAZE SCHOOL	490
43582079	PHAKADE SCHOOL	599
43583722	UKUKHANYAKWEZWE	364
43583733	ENDLELENI SCHOOL	448
43583878	NYAMAZANE PRIMARY SCHOOL	788
43583889	SIPHINHLANHLA HIGH SCHOOL	194
43584149	MAZISI NTULI SCHOOL	395

WYK 10 het 3660 kiesers

Stemdistrik	Stemlokaal	Getal kiesers
43580897	NSONGANSONGA SCHOOL	942
43581078	ZAMAZISA SCHOOL	626
43581089	WOZA TRIBAL COURT	1305
43583890	MAPHUMULO RESOURCE CENTRE	787

WYK 11 het 3628 kiesers

Stemdistrik	Stemlokaal	Getal kiesers
43580628	EMKHOVINI HALL	337
43580639	MAPHUMULO SCHOOL	251
43581090	SIPHAMANDLA SCHOOL	605
43770304	OCHENI SCHOOL	461
43770315	ESINDI SCHOOL	510
43770528	ESIQHOQHWENI SCHOOL	212
43770551	ISITHUNDU SCHOOL	397
43772564	HLIMBITWA COMBINED PRIMARY SCHOOL	382
43773969	NOTHWENI LP SCHOOL	288
43774511	KWANOFHOLA CRECHE	185

Belangrik: Hierdie Bylae bevat die totale getal geregistreerde kiesers op die munisipaliteit se segment van die nasionale gemeenskaplike kieserslys op 12 Februarie 2009, waarvoor voorsiening gemaak is in Goewermentskennisgewing No. 750 gepubliseer in Staatskoerant No. 32407 van 15 Julie 2009. Die stemdistriknommers, die grense van die stemdistrikte, die stemlokale, en die getal kiesers mag verander na die registrasie van kiesers vir die 2011 plaaslike verkiesings.

VORM MDB5

WYKSAFBAKENING

**BESWAAR INGEVOLGE ITEM 5(2) VAN BYLAE 1
VAN DIE WET OP PLAASLIKE REGERING: MUNISIPALE STRUKTURE, 1998**

Naam van Munisipaliteit:.....Code:.....

Naam van beswaarde persoon/instelling:.....

Kontak persoon in geval van 'n instelling:.....

Adres:.....

Tel. nommer:.....Selfoonnommer:.....

E-pos adres:.....

Hiermee teken ek beswaar aan teen die afbakening van die grense van die volgende wyke:

WYK NOMMER	REDE/MOTIVERING

Ek versoek die Munisipale Afbakeningsraad om die volgende alternatiewe voorstelle te oorweeg:

Wyk nommer	Die wyk moet bestaan uit die volgende stemdistrikte: (Voorsien die stemdistriktnommer en die getal geregistreerde kiesers as volg $VD1123456(1500)+VD345678(2500)=4000$)	Motivering

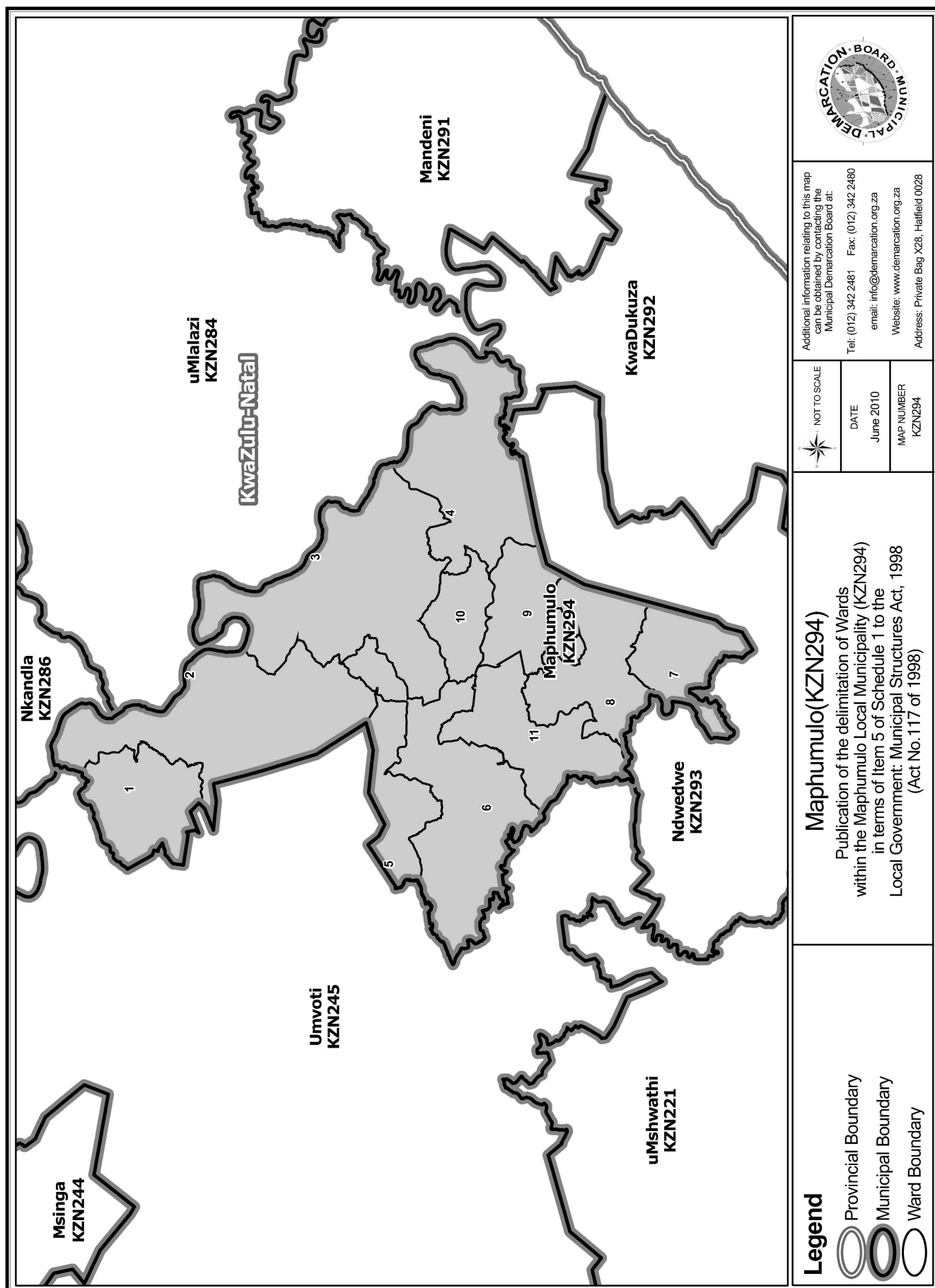
Ek bevestig dat:

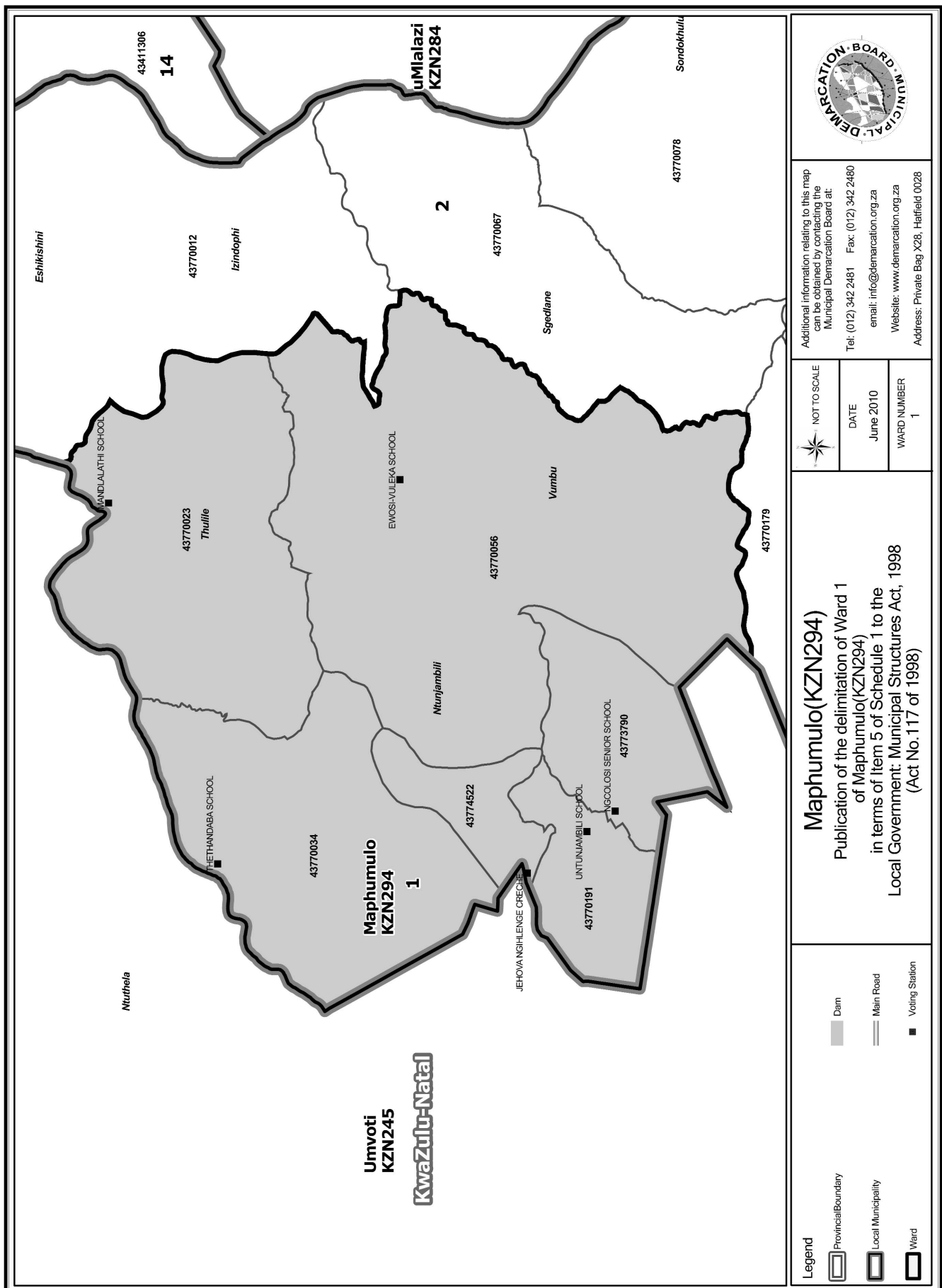
- die saamgevoegde stemdistrikte vorm 'n aaneenlopende wyk;
- die getal kiesers in elke wyk is binne die minimum en maksimum getal wat per wyk toegelaat word;
- die voorgestelde wyke voldoen in die algemeen aan die kriteria.

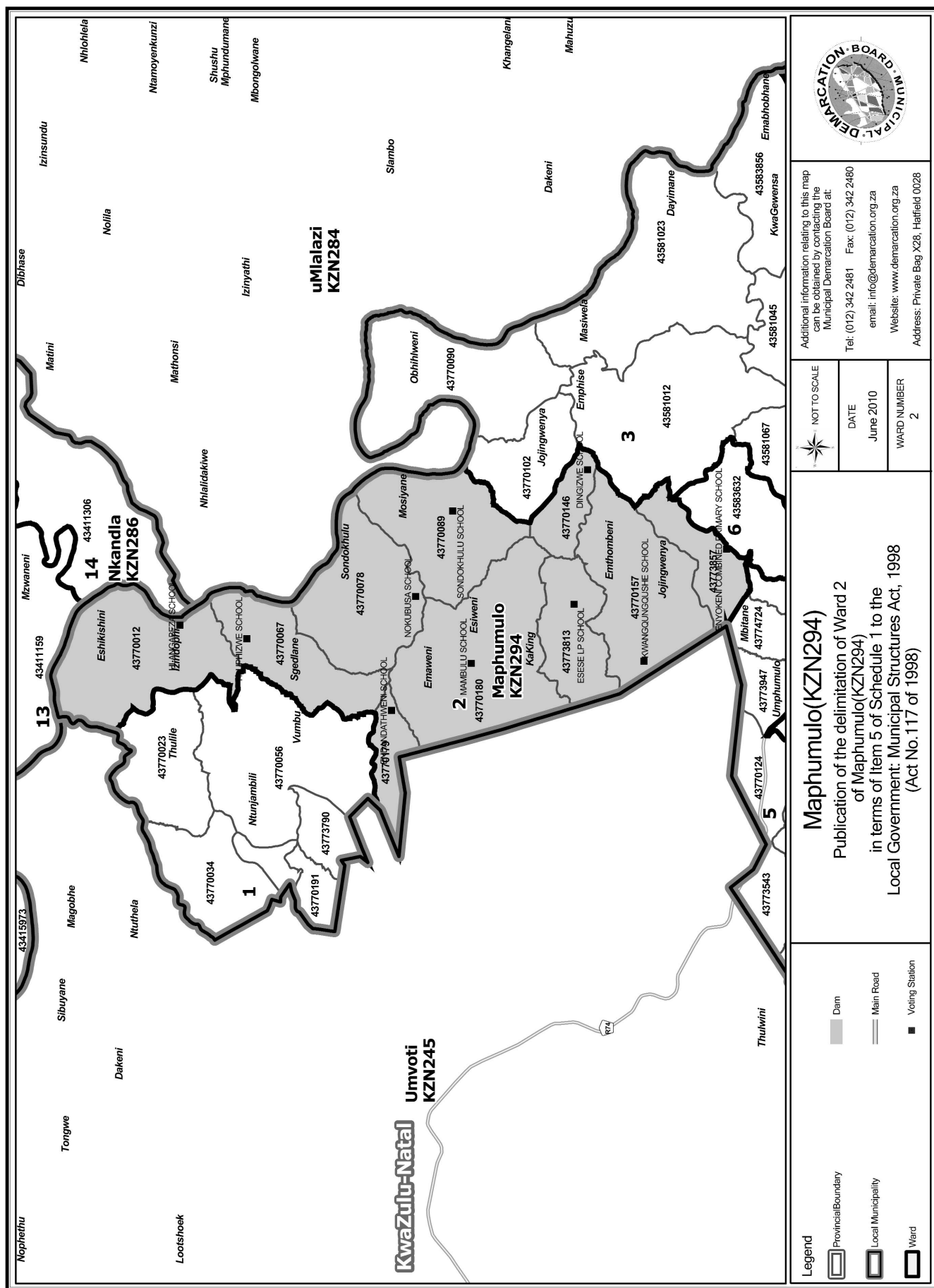
HANDTEKENING

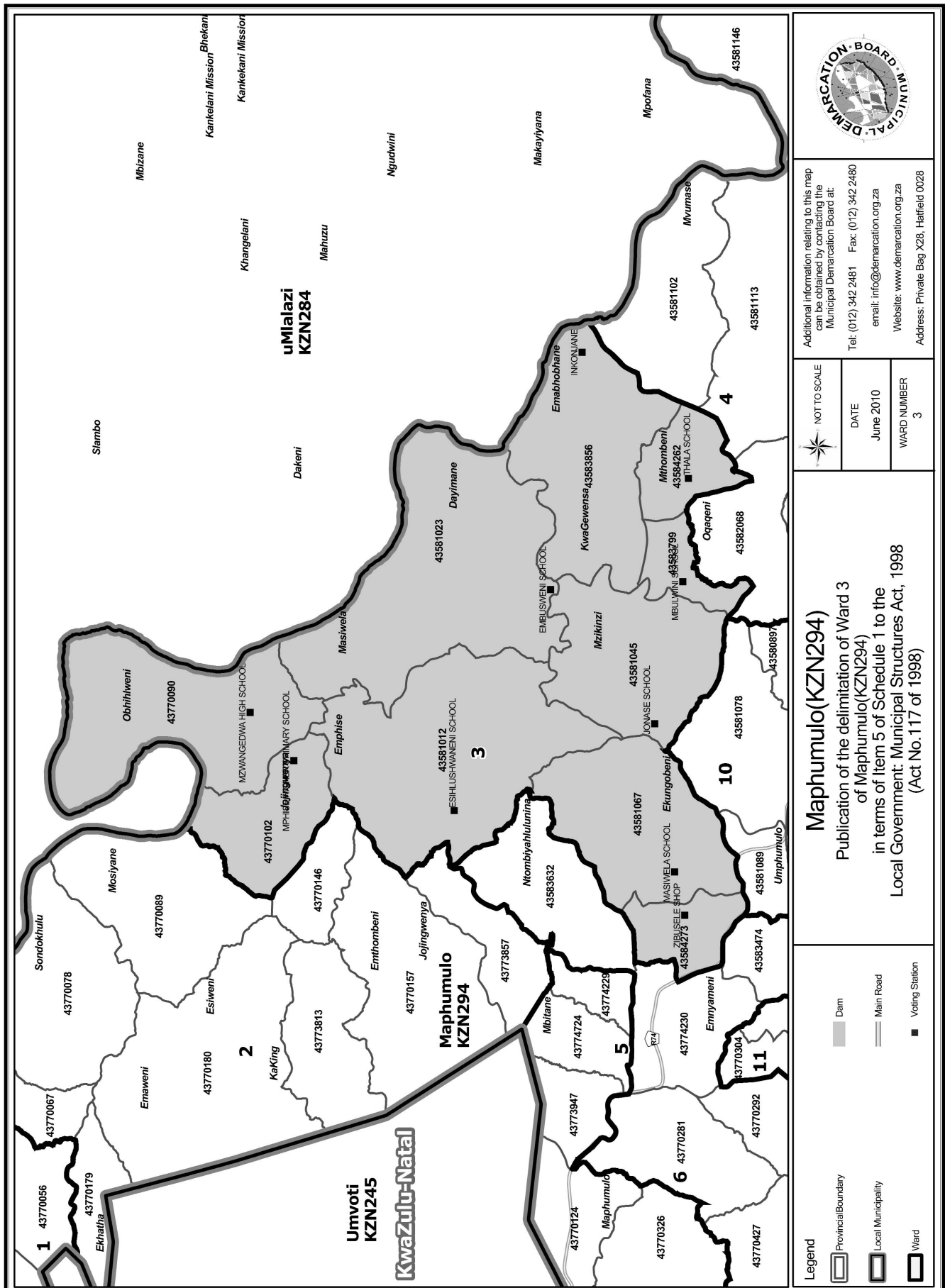
NAAM EN VAN

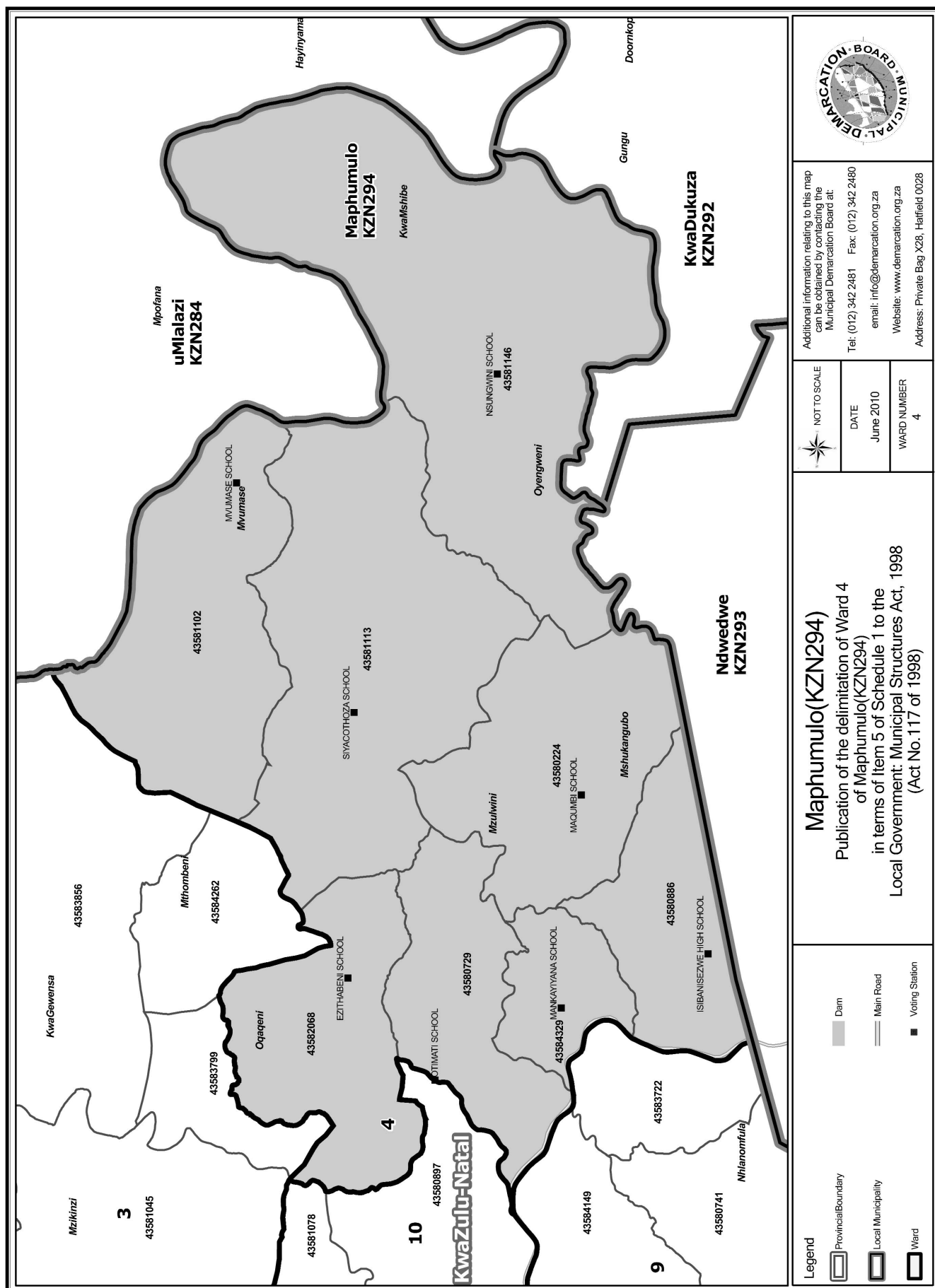
DATUM

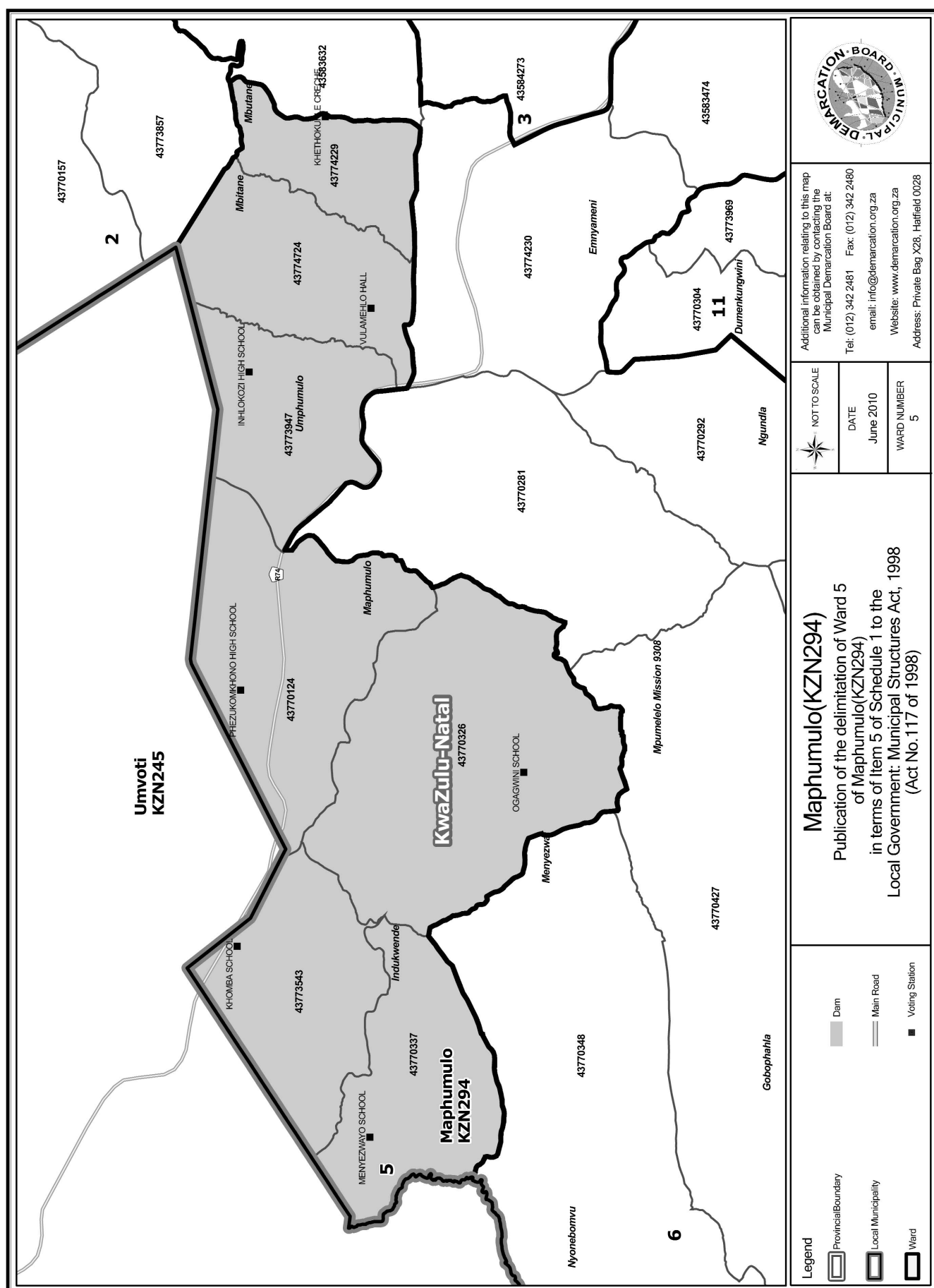


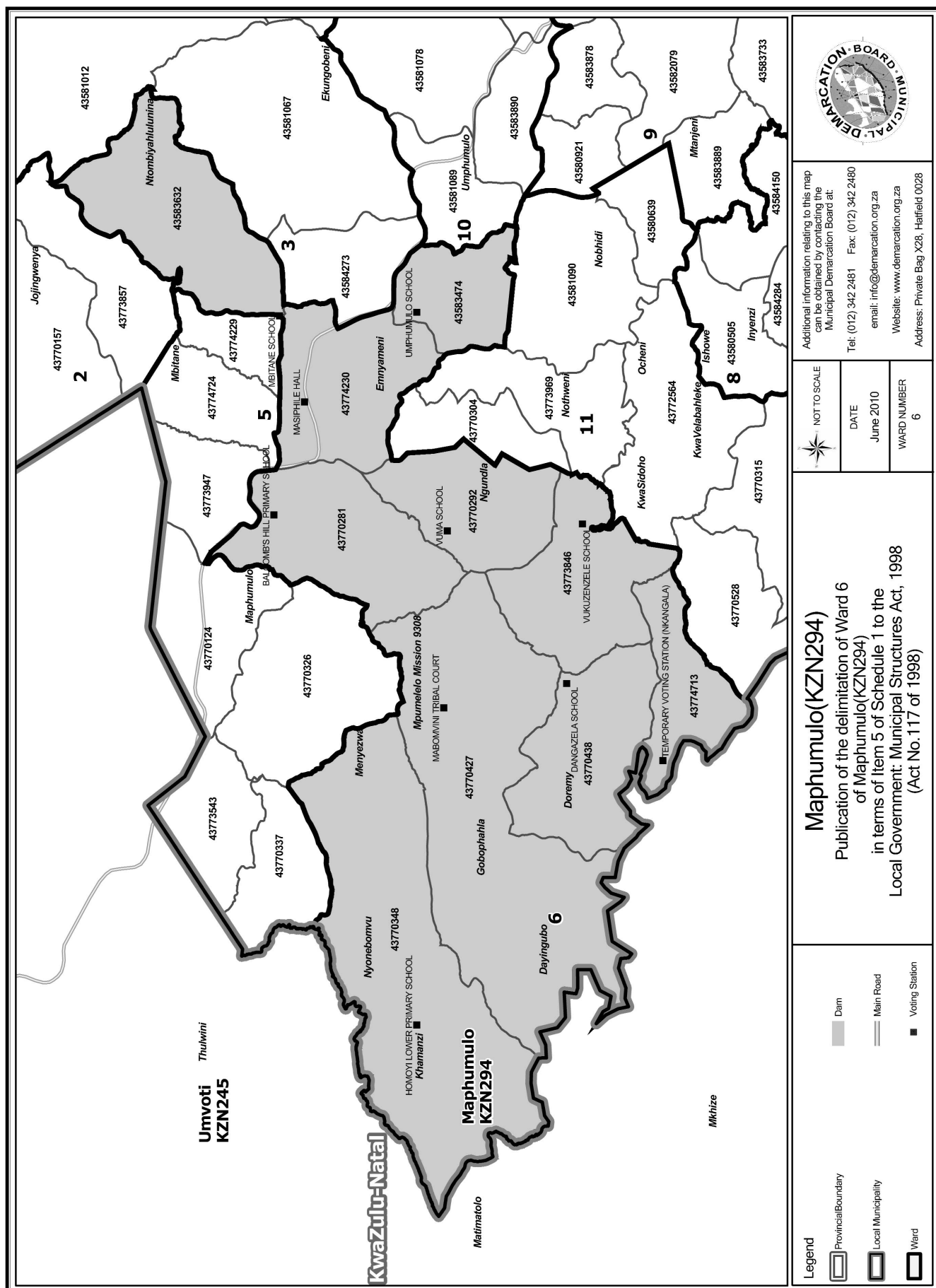


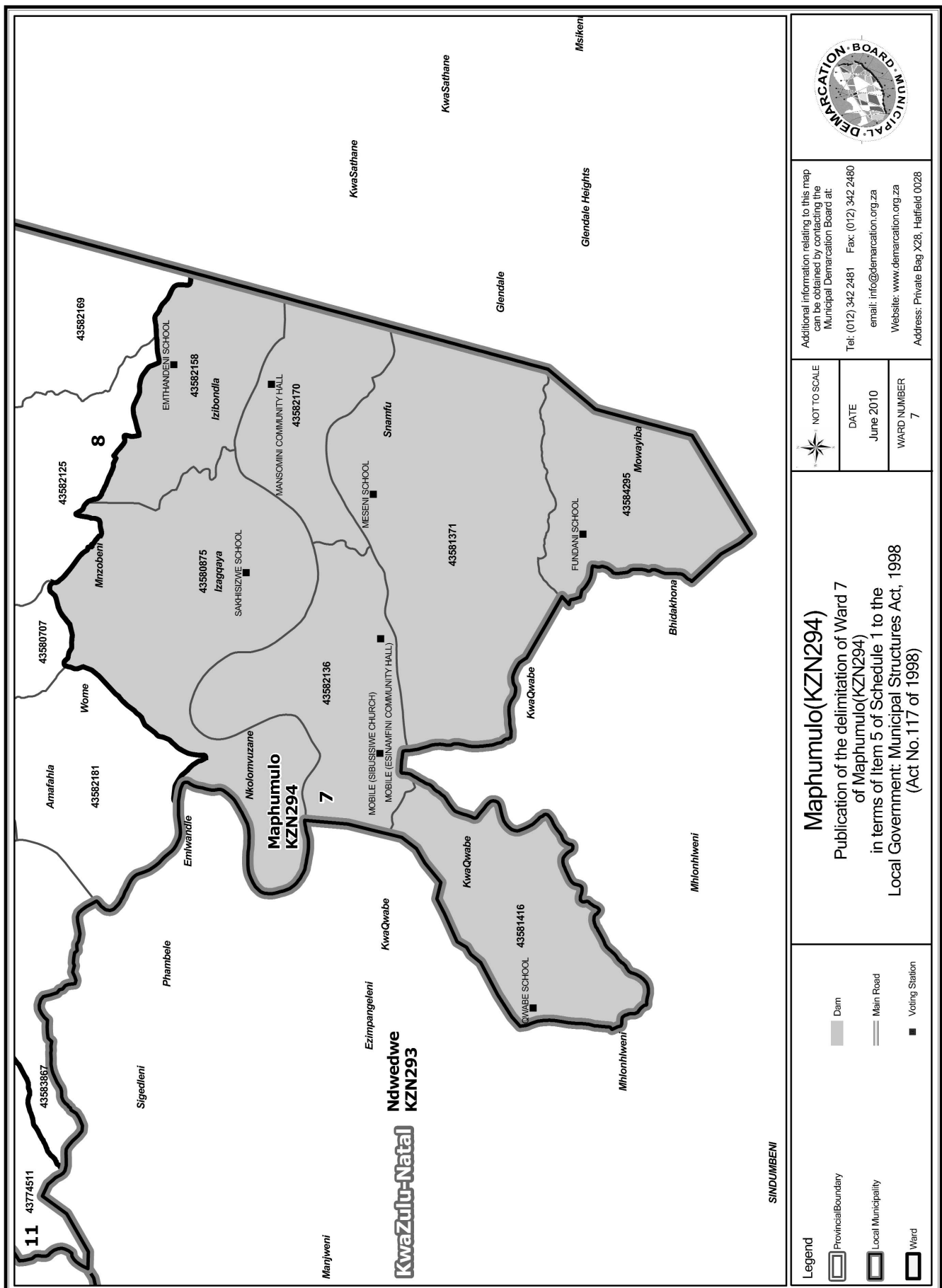












Additional information relating to this map can be obtained by contacting the Municipal Demarcation Board at:
 Tel: (012) 342 2481 Fax: (012) 342 2480
 email: info@demarcation.org.za
 Website: www.demarcation.org.za
 Address: Private Bag X28, Halffield 0028



NOT TO SCALE
 DATE
 June 2010
 WARD NUMBER
 7

Maphumulo(KZN294)

Publication of the delimitation of Ward 7 of Maphumulo(KZN294) in terms of Item 5 of Schedule 1 to the Local Government: Municipal Structures Act, 1998 (Act No.117 of 1998)

