



Government Gazette Staatskoerant

REPUBLIC OF SOUTH AFRICA
REPUBLIEK VAN SUID AFRIKA

Vol. 694

21

April
April

2023

No. 48455



N.B. The Government Printing Works will not be held responsible for the quality of "Hard Copies" or "Electronic Files" submitted for publication purposes

ISSN 1682-5845



AIDS HELPLINE: 0800-0123-22 Prevention is the cure

IMPORTANT NOTICE:

THE GOVERNMENT PRINTING WORKS WILL NOT BE HELD RESPONSIBLE FOR ANY ERRORS THAT MIGHT OCCUR DUE TO THE SUBMISSION OF INCOMPLETE / INCORRECT / ILLEGIBLE COPY.

No FUTURE QUERIES WILL BE HANDLED IN CONNECTION WITH THE ABOVE.

Contents

<i>No.</i>	<i>Gazette No.</i>	<i>Page No.</i>
------------	------------------------	---------------------

GOVERNMENT NOTICES • GOEWERMENTSKENNISGEWINGS**Transport, Department of/ Vervoer, Departement van**

3334	South African National Roads Agency Limited and the National Roads Act (7/1998): Declaration Amendment of National Road R63 Section 15: Amendment of Declaration No. 305 of 2012.....	48455	3
3334	Suid-Afrikaanse Nasionale Padagentskap Beperk en Nasionale Paaie Wet (7/1998): Verklaring Wysiging van Nasionale Pad R63 Seksie 15: Wysiging van Verklaring No. 305 van 2012	48455	4

GOVERNMENT NOTICES • GOEWERMENTSKENNISGEWINGS

DEPARTMENT OF TRANSPORT

NO. 3334

21 April 2023


**THE SOUTH AFRICAN NATIONAL ROADS
AGENCY SOC LIMITED**Registration No: 1998/009584/30

DECLARATION AMENDMENT OF NATIONAL ROAD R63 SECTION 15

AMENDMENT OF DECLARATION No. 305 OF 2012.

By virtue of section 40(1)(b) of the South African National Roads Agency Limited and the National Roads Act 1998 (Act No. 7 of 1998), I hereby amend Declaration No. 305 of 2012 by substituting paragraph E(IV) of the Schedule, being the descriptive declaration of the route from its Junction with National Road N2 Section 15 in King William's Town up to its Junction with National Road N6 Section 1, with the accompanying sheets 1 to 13 of Plan No. P1223/22.

In the town of King William's Town the R63 Section 15 starts at its junction with the streets known as Alexandra Road and Grey Street at time of declaration, therefrom it follows the street known as Maitland Road in a general easterly direction, at time of declaration.

(National Road R63 Section 15: King William's Town – N6 Junction)

MINISTER OF TRANSPORT

DEPARTEMENT VAN VERVOER

NO. 3334

21 April 2023

**DIE SUID-AFRIKAANSE NASIONALE
PADAGENTSKAP MSB BEPERK**

Registrasie No: 1998/009584/30

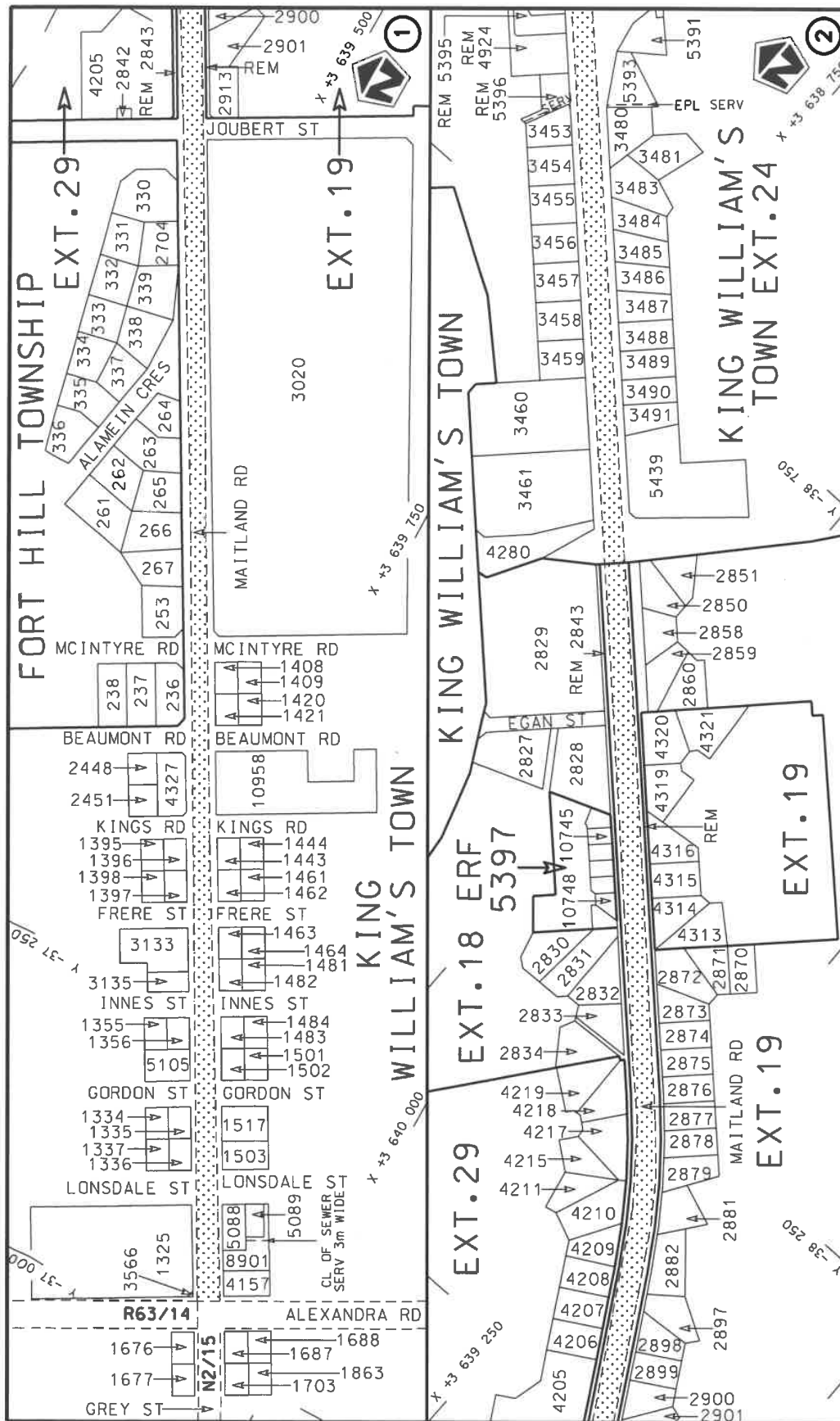
VERKLARING WYSIGING VAN NASIONALE PAD R63 SEKSIE 15

WYSIGING VAN VERKLARING No. 305 VAN 2012.

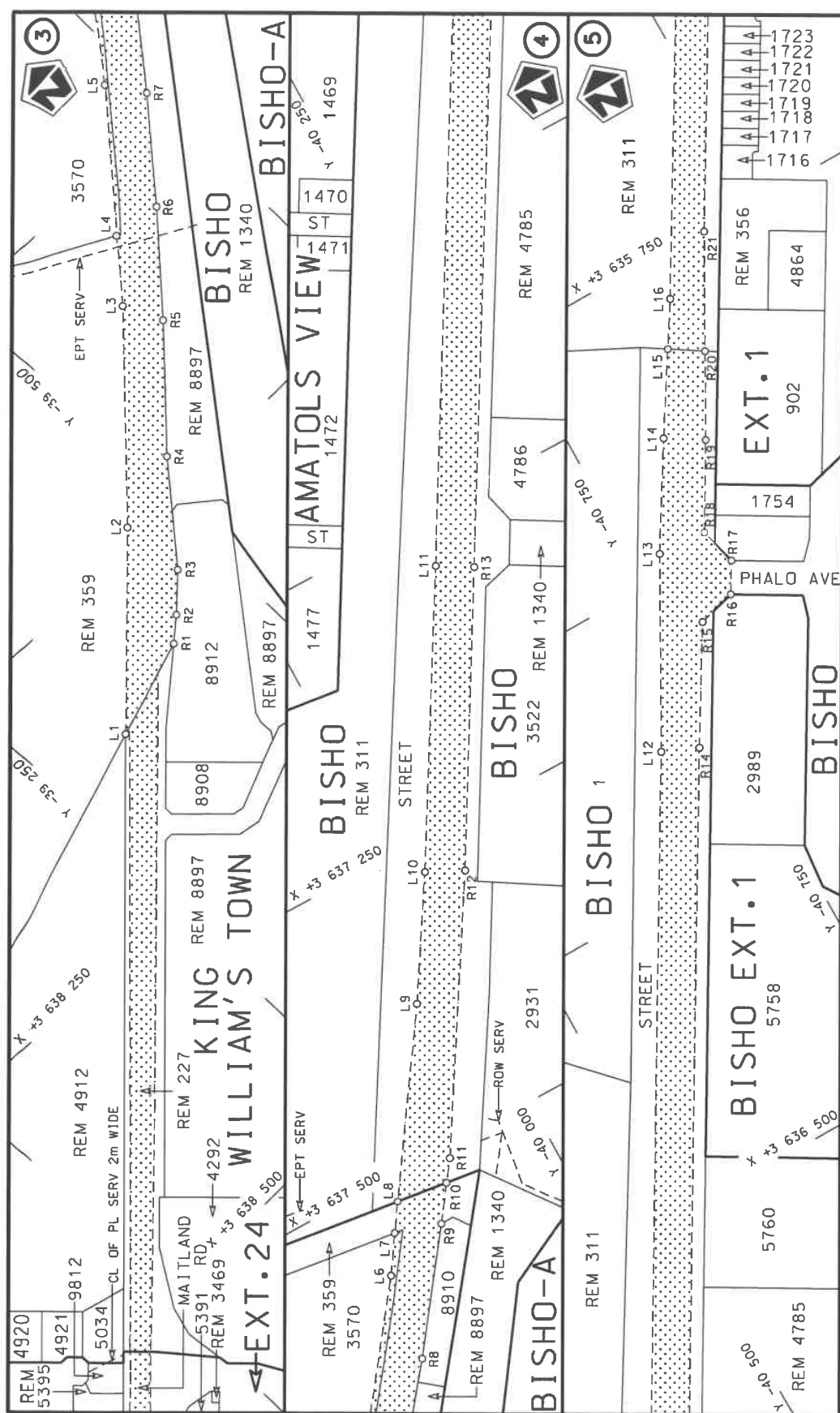
Kragtens Artikel 40(1)(b) van die Suid-Afrikaanse Nasionale Padagentskap Beperk en Nasionale Paaie Wet 1998 (Wet No. 7 van 1998), wysig ek hiermee Verklaring No. 305 van 2012 deur paragraaf E(IV) van die Skedule te vervang, synde die gedeelte van die beskrywende verklaring van die pad vanaf die aansluiting met Nasionale Pad N2 Seksie 15 in King William's Town tot by die aansluiting met Nasionale Pad N6 Seksie 1, met bygaande velle 1 tot 13 van Plan No. P1223/22.


In die dorp King William's Town begin die R63 Seksie 15 by die aansluiting met die strate bekend as Alexandraweg en Greystraat tydens datum van verklaring, daarvandaan volg dit die straat bekend as Maitlandweg in 'n algemene oostelike rigting, tydens datum van verklaring.

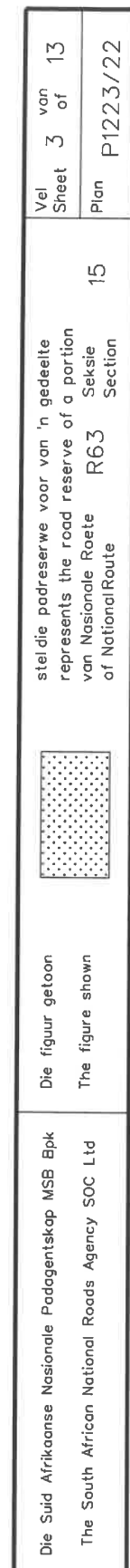
(Nasionale Pad R63 Seksie 15: King William's Town – N6 Aansluiting)**MINISTER VAN VERVOER**

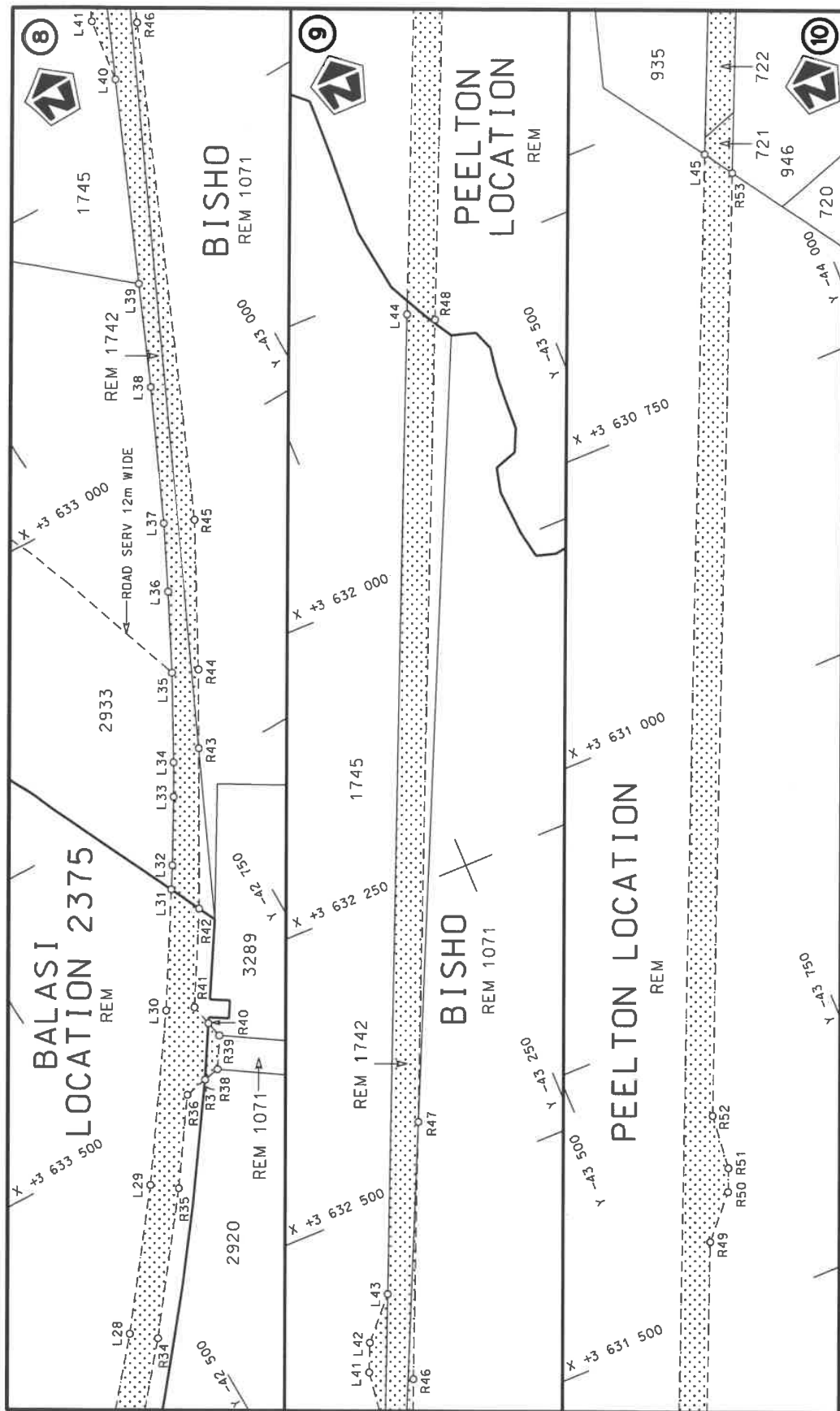


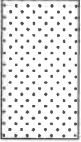
Die Suid Afrikaanse Nasionale Padagentskap MSB Bpk The South African National Roads Agency SOC Ltd	stel die padreserwe voor van 'n gedeelte represents the road reserve of a portion van Nasionale Roete R63 Sektie of National Route Section	
	Vel Sheet	van of
Die figuur getoon The figure shown		15
		Plan P1223/22

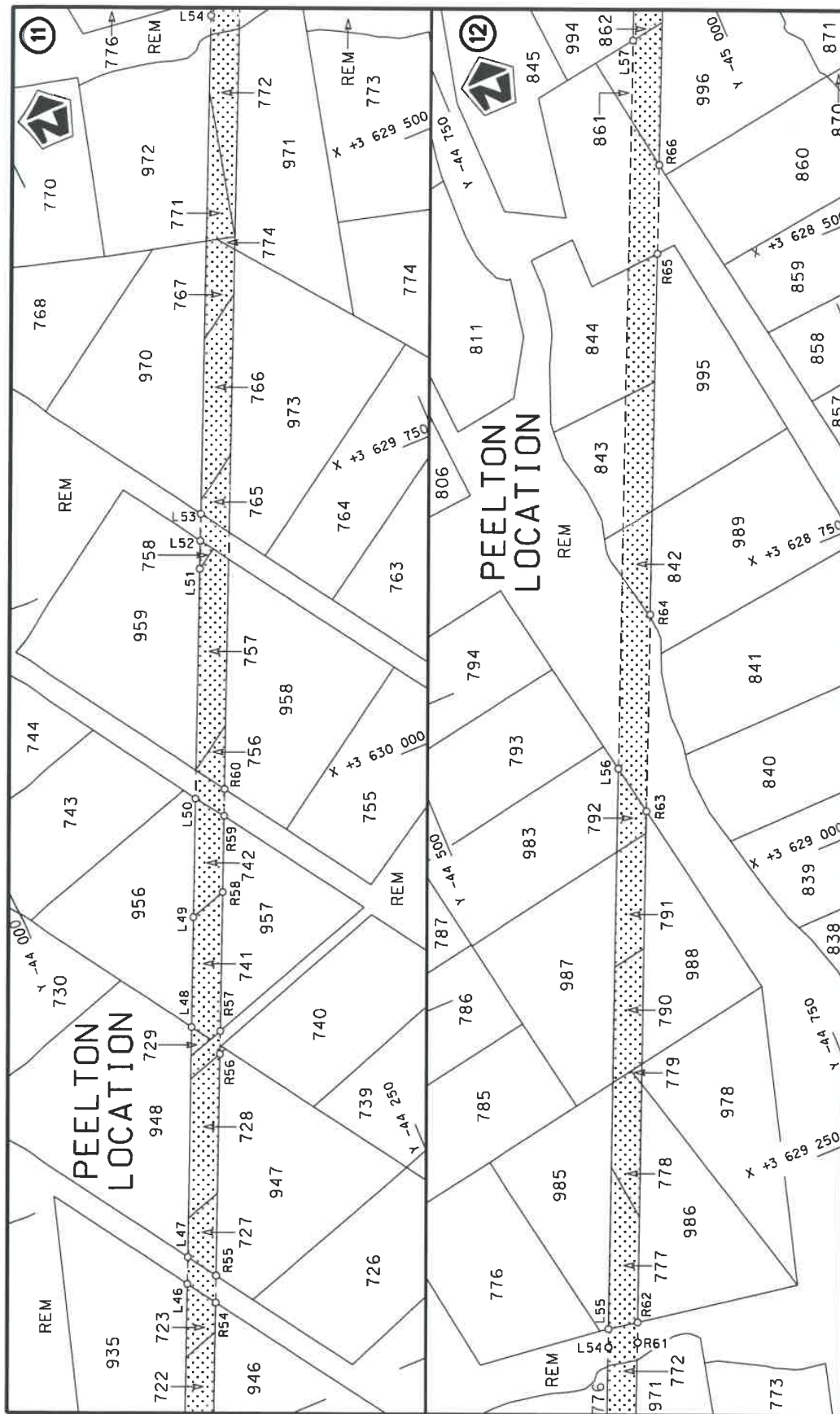


Die Suid Afrikaanse Nasionale Padagentskap MSB Bpk	Die figuur getoon		stel die padreserwe voor van 'n gedeelte represents the road reserve of a portion van Nasionale Roete R63 of National Route	Vel Sheet 2 of 13
The South African National Roads Agency SOC Ltd	The figure shown			15

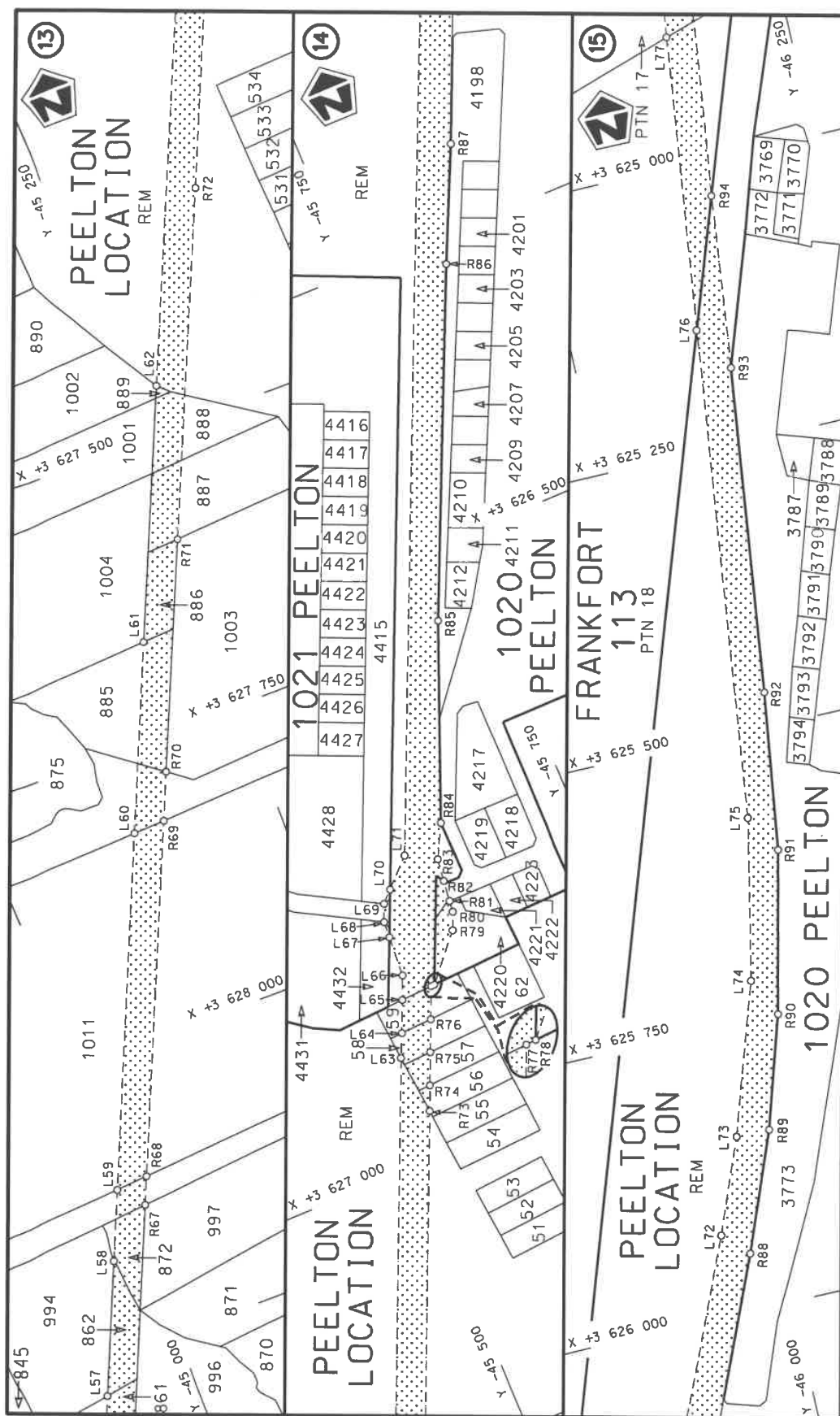




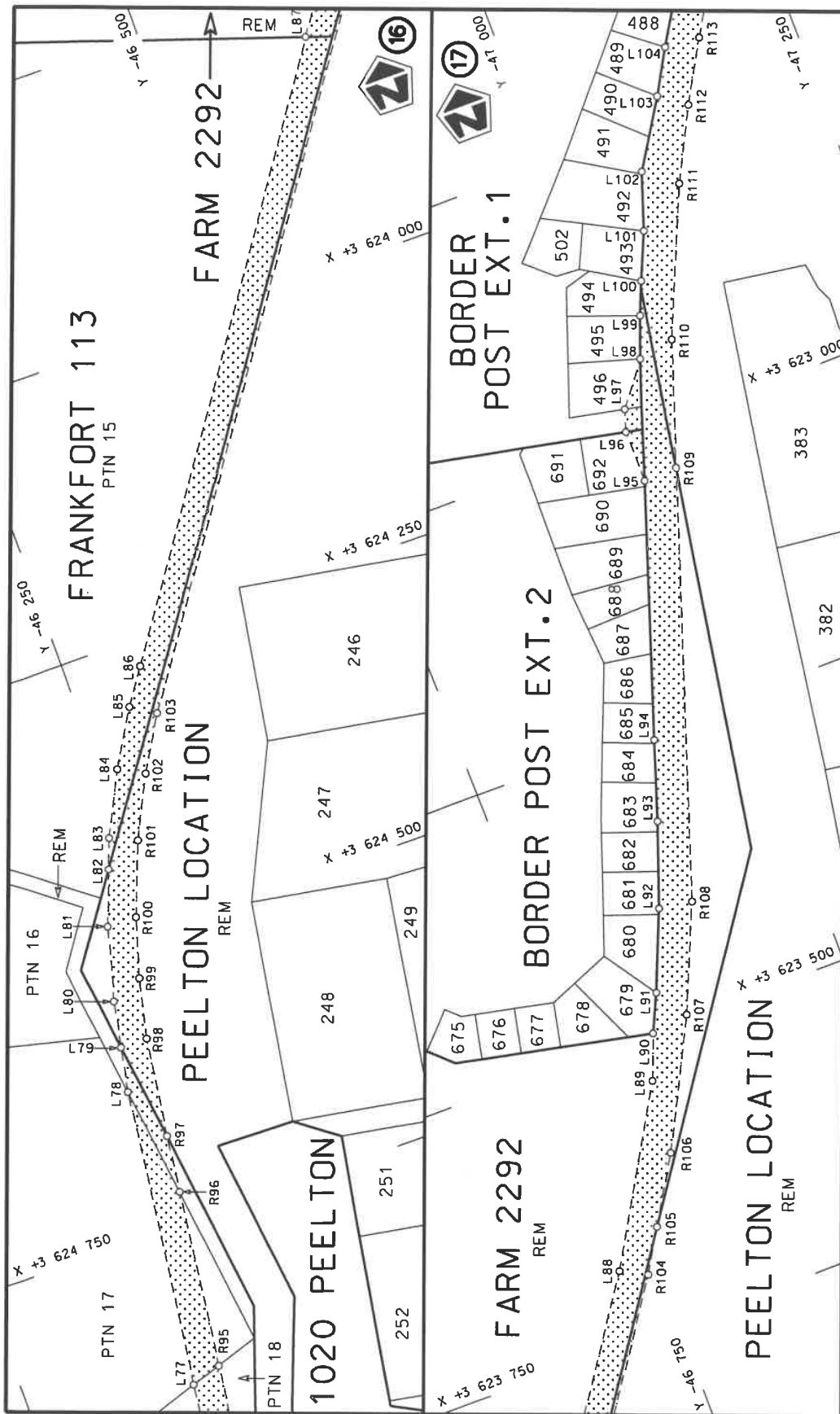
Die Suid Afrikaanse Nasionale Padagentskap MSB Bpk The South African National Roads Agency SOC Ltd	Die figuur getoon The figure shown	 steldie padreserwe voor van 'n gedeelte represents the road reserve of a portion van Nasionale Roete R63 of National Route R63	Vel Sheet 4 of 13 Plan P1223/22
---	---------------------------------------	--	--




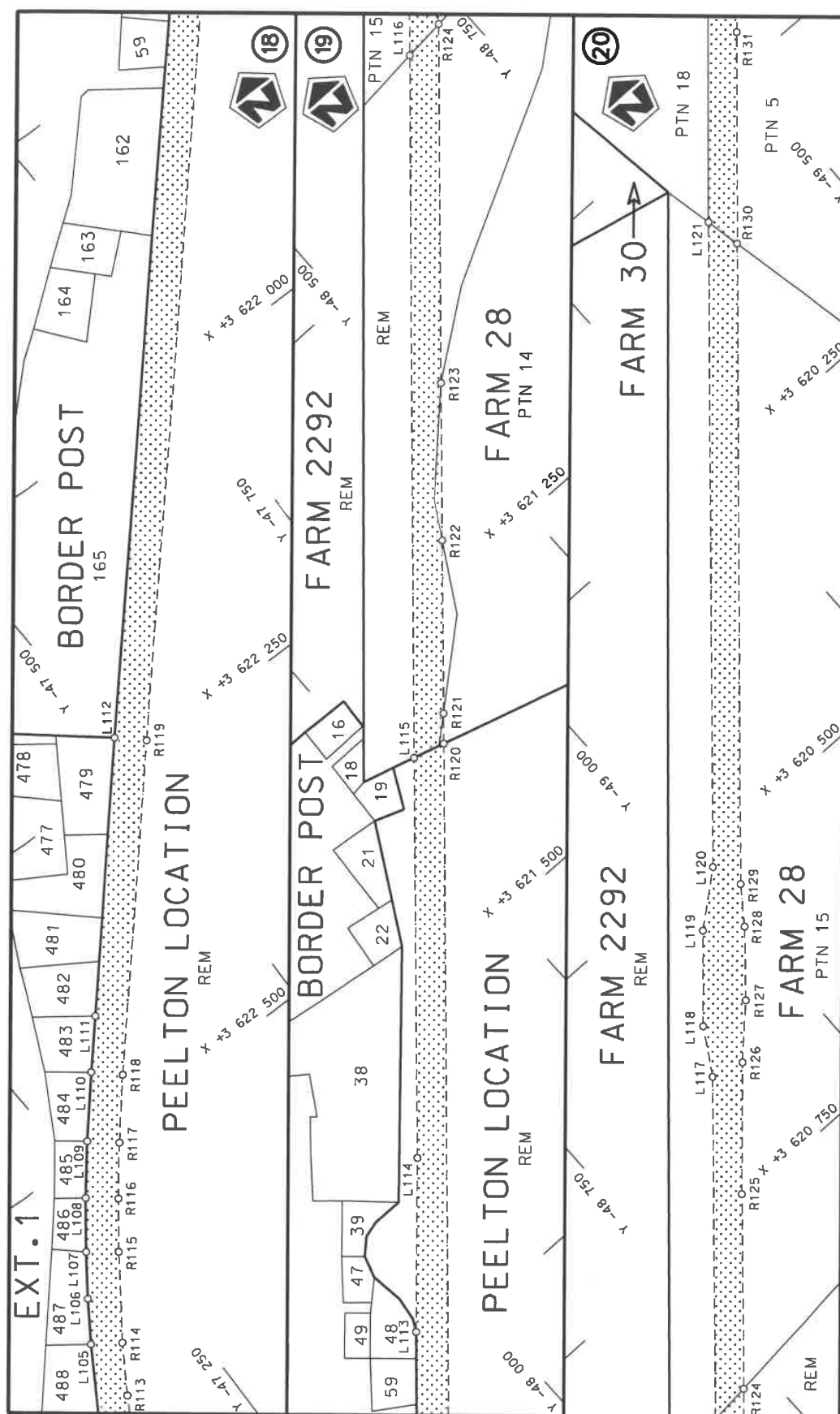
Die Suid Afrikaanse Nasionale Padagentskap MSB Bpk The South African National Roads Agency SOC Ltd	Die figuur getoon The figure shown	stel die padreserwe voor van 'n gedeelte represents the road reserve of a portion van Nasionale Roete R63 of National Route R63 of National Route R63 of National Route R63	Vel Sheet Plan	5 13 P1223/22
---	---------------------------------------	--	----------------------	---------------------




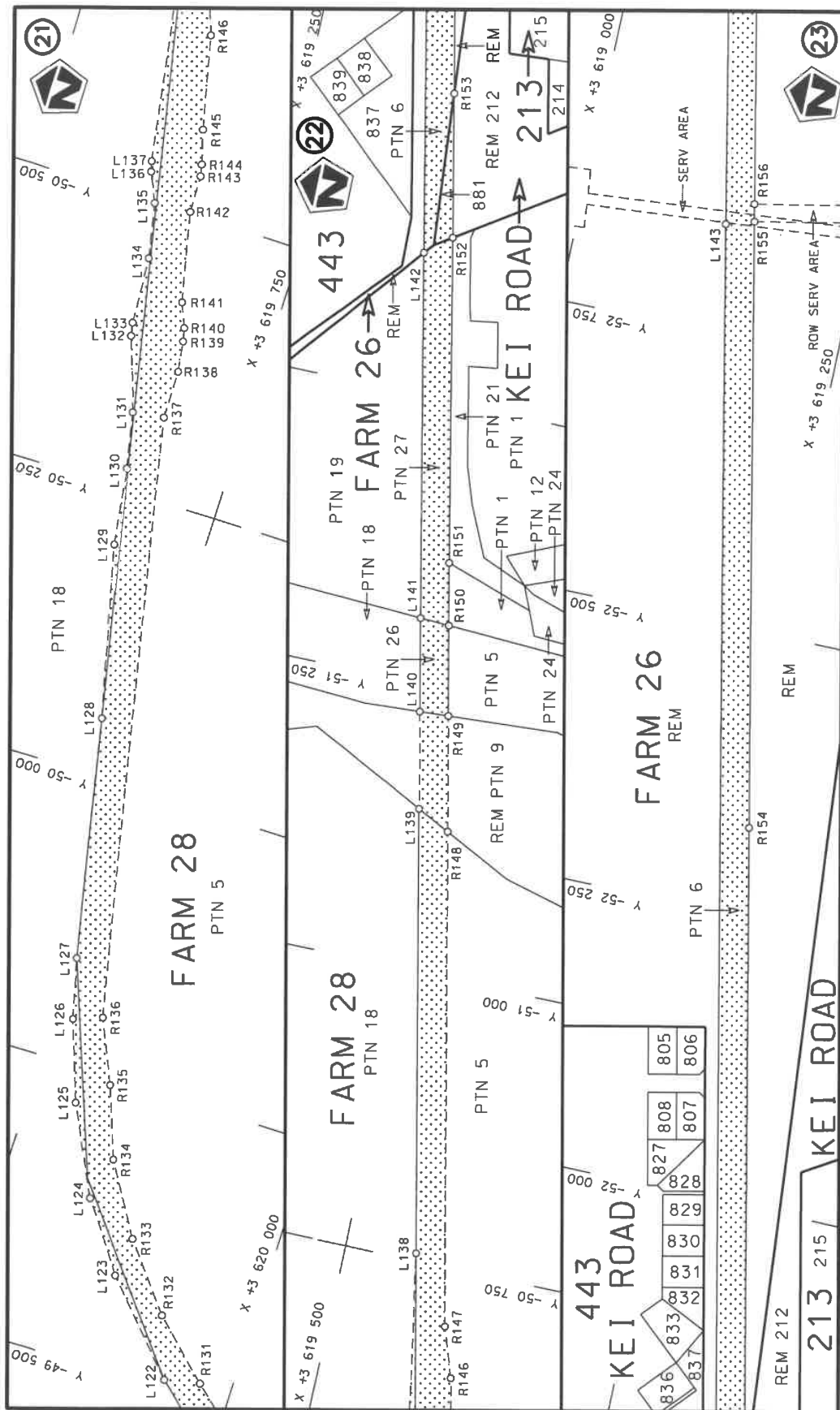
Die Suid Afrikaanse Nasionale Padagentskap MSB Bpk The South African National Roads Agency SOC Ltd	Die figuur getoon The figure shown	steldie podreserwe voor van 'n gedeelte represents the road reserve of a portion van Nasionale Roete R63 of National Route R63 of National Route R63 of National Route R63	Vel Sheet 6 of 13 Plan P1223/22
---	---------------------------------------	---	---



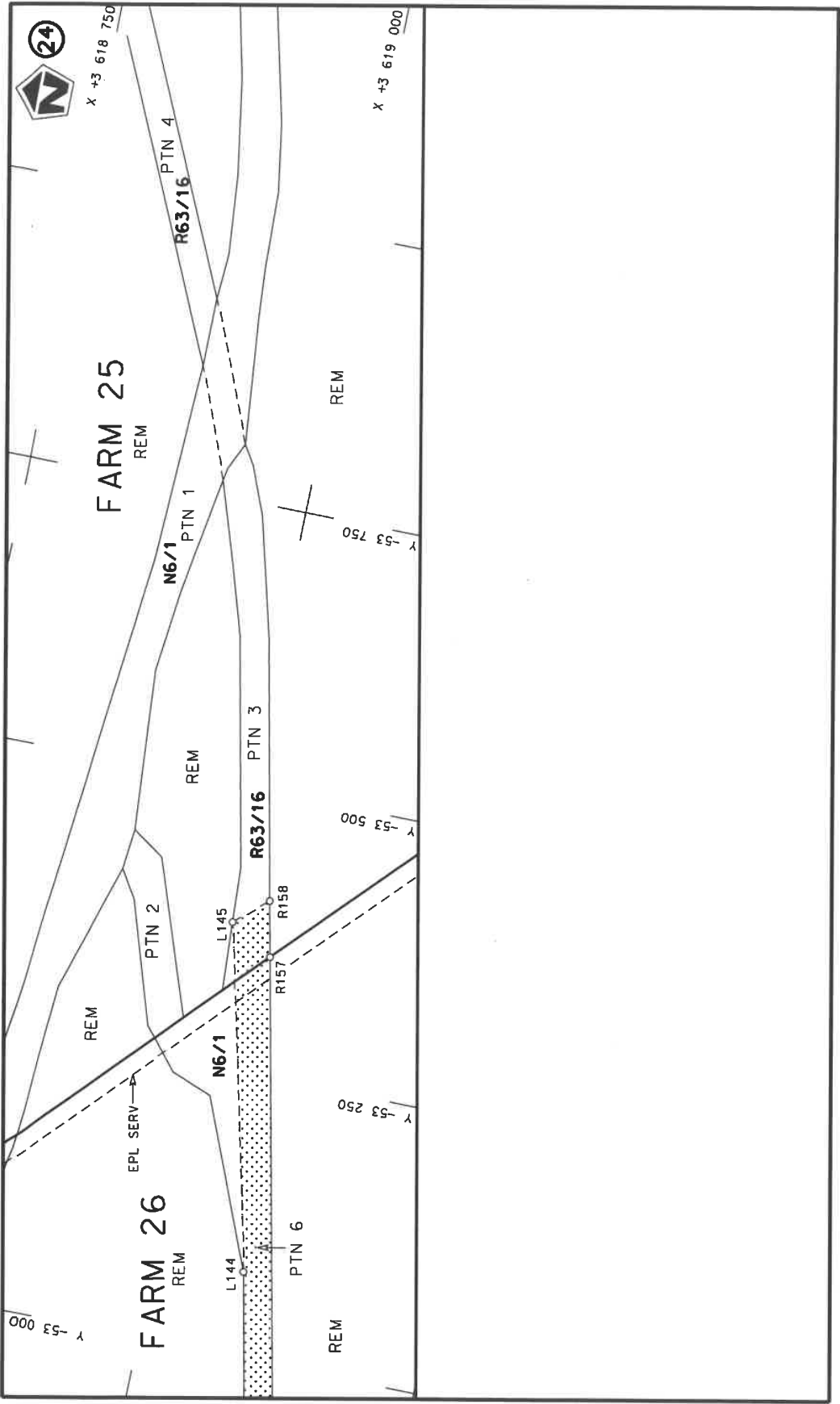
Die Suid Afrikaanse Nasionale Padagentskap MSB Bpk The South African National Roads Agency SOC Ltd	Die figuur getoon The figure shown		stel die padreserwe voor van 'n gedeelte represents the road reserve of a portion van Nasionale Roete R63 Seksie of National Route R63 Section	Vel Sheet 7 of 13 Plan P1223/22
---	---------------------------------------	---	---	---

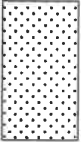


Die Suid Afrikaanse Nasionale Padagentskap MSB Bpk The South African National Roads Agency SOC Ltd	Die figuur getoon The figure shown	 steldie padreserwe voor van 'n gedeelte represents the road reserve of a portion van Nasionale Roete R63 Seksie of National Route R63 Section	Vel Sheet 8 of 13 Plan P1223/22
---	---------------------------------------	---	---------------------------------------



Die Suid Afrikaanse Nasionale Padagentskap MSB Bpk The South African National Roads Agency SOC Ltd	Die figuur getoon The figure shown	stelde podreserwe voor van 'n gedeelte represents the road reserve of a portion van Nasionale Roete R63 Sektie of National Route Section	Vel Sheet 9 of 13 Plan P1223/22
---	---------------------------------------	---	---------------------------------------



Die Suid Afrikaanse Nasionale Padagentskap MSB Bpk The South African National Roads Agency SOC Ltd	Die figuur getoon The figure shown		stel die padreserwe voor van 'n gedeelte represents the road reserve of a portion van Nasionale Roete R63 of National Route	15	Vel Sheet 10 of 13 Plan P1223/22
---	---------------------------------------	---	--	----	-------------------------------------

PADRESERWE KOÖRDINATE / ROAD RESERVE CO-ORDINATES									
LINKERKANT/LEFT HAND SIDE					REGTERKANT/RIGHT HAND SIDE				
	Y		X	WG 27°		Y		X	
L1	-39 328.99	3	638	118.66	R1	-39 415.94	3	638	092.58
L2	-39 460.02	3	637	990.70	R2	-39 435.70	3	638	076.23
L3	-39 596.20	3	637	849.87	R3	-39 464.95	3	638	048.93
L4	-39 636.91	3	637	802.37	R4	-39 529.58	3	637	971.57
L5	-39 723.69	3	637	701.14	R5	-39 612.86	3	637	884.22
L6	-39 818.69	3	637	575.85	R6	-39 679.94	3	637	809.49
L7	-39 839.79	3	637	544.75	R7	-39 744.85	3	637	732.48
L8	-39 855.49	3	637	521.60	R8	-39 807.54	3	637	653.84
L9	-39 954.31	3	637	375.95	R9	-39 879.88	3	637	557.13
L10	-40 016.67	3	637	276.91	R10	-39 901.21	3	637	527.55
L11	-40 155.29	3	637	043.42	R11	-39 914.20	3	637	509.53
L12	-40 687.34	3	636	134.57	R12	-40 048.14	3	637	292.55
L13	-40 772.25	3	635	980.97	R13	-40 184.29	3	637	060.39
L14	-40 825.51	3	635	893.51	R14	-40 718.45	3	636	147.93
L15	-40 867.54	3	635	826.42	R15	-40 775.55	3	636	052.11
L16	-40 890.97	3	635	789.03	R16	-40 809.72	3	636	043.16
L17	-41 092.03	3	635	446.13	R17	-40 824.87	3	636	017.27
L18	-41 146.27	3	635	353.63	R18	-40 816.08	3	635	983.71
L19	-41 235.60	3	635	207.83	R19	-40 857.21	3	635	912.92
L20	-41 480.89	3	634	784.70	R20	-40 895.19	3	635	844.04
L21	-41 568.74	3	634	641.34	R21	-40 946.02	3	635	751.84
L22	-41 617.96	3	634	567.28	R22	-41 119.15	3	635	456.02
L23	-41 661.37	3	634	505.74	R23	-41 126.36	3	635	454.13
L24	-41 772.93	3	634	381.64	R24	-41 138.92	3	635	450.84
L25	-41 927.73	3	634	214.53	R25	-41 159.44	3	635	445.47
L26	-42 024.67	3	634	109.85	R26	-41 170.29	3	635	417.05
L27	-42 357.80	3	633	748.71	R27	-41 171.76	3	635	394.74
L28	-42 443.51	3	633	650.00	R28	-41 173.88	3	635	362.49
L29	-42 525.50	3	633	545.69	R29	-41 538.29	3	634	739.86
L30	-42 615.46	3	633	419.60	R30	-41 611.99	3	634	621.90
L31	-42 673.34	3	633	329.68	R31	-41 694.76	3	634	510.13
L32	-42 684.92	3	633	311.66	R32	-41 786.10	3	634	405.24
L33	-42 716.47	3	633	259.78	R33	-42 375.87	3	633	767.44
L34	-42 731.75	3	633	233.42	R34	-42 462.86	3	633	665.90
L35	-42 770.54	3	633	164.11	R35	-42 545.60	3	633	560.86
L36	-42 803.82	3	633	100.41	R36	-42 594.14	3	633	493.71
L37	-42 830.99	3	633	046.18	R37	-42 614.47	3	633	490.28
L38	-42 881.69	3	632	936.36	R38	-42 628.55	3	633	487.91
L39	-42 918.55	3	632	852.29	R39	-42 644.91	3	633	462.74
L40	-42 991.41	3	632	686.10	R40	-42 642.26	3	633	448.71
L41	-42 998.84	3	632	631.34	R41	-42 638.71	3	633	429.89
L42	-43 009.42	3	632	607.18	R42	-42 686.34	3	633	357.00
L43	-43 040.57	3	632	573.96	R43	-42 757.45	3	633	234.28
L44	-43 388.70	3	631	779.95	R44	-42 792.68	3	633	173.50
L45	-43 929.69	3	630	545.03	R45	-42 856.32	3	633	057.17
L46	-44 011.07	3	630	359.35	R46	-43 032.97	3	632	652.15
L47	-44 020.63	3	630	337.53	R47	-43 124.47	3	632	443.66
L48	-44 102.01	3	630	151.87	R48	-43 409.73	3	631	793.66
L49	-44 141.00	3	630	062.91	R49	-43 566.79	3	631	435.46
L50	-44 183.05	3	629	966.94	R50	-43 598.37	3	631	400.79
L51	-44 264.64	3	629	780.79	R51	-43 606.85	3	631	381.44
					Vel 11 Van 13 Sheet of P1223/22				

PADRESERWE KOÖRDINATE / ROAD RESERVE CO-ORDINATES									
LINKERKANT/LEFT HAND SIDE					REGTERKANT/RIGHT HAND SIDE				
	Y		X	WG 27°		Y		X	
L52	-44 274.57	3	629	758.14	R52	-43 611.52	3	631	333.44
L53	-44 284.07	3	629	736.45	R53	-43 946.38	3	630	569.69
L54	-44 460.25	3	629	334.45	R54	-44 027.76	3	630	384.02
L55	-44 466.54	3	629	320.09	R55	-44 037.32	3	630	362.20
L56	-44 665.11	3	628	867.02	R56	-44 115.76	3	630	183.25
L57	-44 922.96	3	628	278.72	R57	-44 123.87	3	630	164.73
L58	-44 970.83	3	628	169.47	R58	-44 173.14	3	630	052.31
L59	-44 996.10	3	628	111.80	R59	-44 200.14	3	629	990.71
L60	-45 122.70	3	627	822.98	R60	-44 209.68	3	629	968.95
L61	-45 190.80	3	627	667.61	R61	-44 485.23	3	629	340.22
L62	-45 281.83	3	627	459.89	R62	-44 492.19	3	629	324.31
L63	-45 524.14	3	626	906.83	R63	-44 673.29	3	628	911.12
L64	-45 533.03	3	626	886.55	R64	-44 743.07	3	628	751.88
L65	-45 544.79	3	626	859.72	R65	-44 870.89	3	628	460.27
L66	-45 553.55	3	626	839.72	R66	-44 902.24	3	628	388.75
L67	-45 555.86	3	626	804.15	R67	-45 014.27	3	628	133.13
L68	-45 556.78	3	626	790.01	R68	-45 024.47	3	628	109.85
L69	-45 562.97	3	626	775.13	R69	-45 150.74	3	627	821.76
L70	-45 572.84	3	626	765.37	R70	-45 168.22	3	627	781.87
L71	-45 596.28	3	626	742.18	R71	-45 250.89	3	627	593.25
L72	-45 952.89	3	625	928.25	R72	-45 376.24	3	627	309.50
L73	-45 985.65	3	625	846.37	R73	-45 528.84	3	626	959.13
L74	-46 029.03	3	625	715.21	R74	-45 537.86	3	626	938.40
L75	-46 058.82	3	625	574.43	R75	-45 549.52	3	626	911.64
L76	-46 112.12	3	625	144.42	R76	-45 561.18	3	626	884.88
L77	-46 144.05	3	624	886.88	R77	-45 572.85	3	626	858.08
L78	-46 177.40	3	624	624.59	R78	-45 576.00	3	626	857.89
L79	-46 185.09	3	624	585.49	R79	-45 609.28	3	626	819.28
L80	-46 193.01	3	624	545.23	R80	-45 615.73	3	626	804.54
L81	-46 210.20	3	624	481.28	R81	-45 616.95	3	626	794.74
L82	-46 228.17	3	624	433.82	R82	-45 619.20	3	626	776.53
L83	-46 237.97	3	624	407.94	R83	-45 621.70	3	626	756.35
L84	-46 264.95	3	624	352.66	R84	-45 636.70	3	626	728.11
L85	-46 293.54	3	624	304.36	R85	-45 703.55	3	626	562.10
L86	-46 314.56	3	624	273.51	R86	-45 831.33	3	626	274.02
L87	-46 639.32	3	623	801.15	R87	-45 875.62	3	626	177.67
L88	-46 717.84	3	623	686.94	R88	-45 973.95	3	625	950.20
L89	-46 804.84	3	623	540.37	R89	-46 014.99	3	625	847.49
L90	-46 820.46	3	623	501.82	R90	-46 045.68	3	625	749.80
L91	-46 835.87	3	623	469.29	R91	-46 078.63	3	625	608.27
L92	-46 864.57	3	623	400.48	R92	-46 098.22	3	625	469.67
L93	-46 890.74	3	623	327.98	R93	-46 134.00	3	625	183.40
L94	-46 913.45	3	623	259.62	R94	-46 151.03	3	625	031.84
L95	-46 986.35	3	623	042.24	R95	-46 170.31	3	624	878.49
L96	-46 985.99	3	622	996.19	R96	-46 189.91	3	624	722.55
L97	-46 992.19	3	622	977.11	R97	-46 196.19	3	624	672.58
L98	-47 020.66	3	622	940.32	R98	-46 208.33	3	624	585.20
L99	-47 034.03	3	622	904.58	R99	-46 220.42	3	624	532.95
L100	-47 045.68	3	622	876.33	R100	-46 236.02	3	624	481.22
L101	-47 063.36	3	622	835.97	R101	-46 260.55	3	624	417.81
L102	-47 079.98	3	622	786.51	R102	-46 286.79	3	624	364.48
					<div> <div>Vel Sheet</div> <div>12</div> <div>Van of</div> <div>13</div> <div>P1223/22</div> </div>				

PADRESERWE KOÖRDINATE / ROAD RESERVE CO-ORDINATES									
LINKERKANT/LEFT HAND SIDE					REGTERKANT/RIGHT HAND SIDE				
	Y		X	WG 27°		Y		X	
L103	-47 116.27	3	622	729.31	R103	-46 314.69	3	624	318.00
L104	-47 137.93	3	622	691.30	R104	-46 740.79	3	623	699.26
L105	-47 169.93	3	622	638.26	R105	-46 762.44	3	623	663.61
L106	-47 192.04	3	622	604.64	R106	-46 797.54	3	623	605.80
L107	-47 215.86	3	622	570.77	R107	-46 853.69	3	623	496.42
L108	-47 244.32	3	622	532.42	R108	-46 893.65	3	623	404.67
L109	-47 275.60	3	622	493.32	R109	-47 016.28	3	623	041.32
L110	-47 315.24	3	622	446.67	R110	-47 052.52	3	622	933.94
L111	-47 348.02	3	622	409.18	R111	-47 106.95	3	622	807.76
L112	-47 510.52	3	622	222.87	R112	-47 138.82	3	622	745.83
L113	-47 944.73	3	621	727.44	R113	-47 168.39	3	622	693.67
L114	-48 047.88	3	621	612.68	R114	-47 193.17	3	622	653.78
L115	-48 280.67	3	621	346.08	R115	-47 239.22	3	622	587.78
L116	-48 689.12	3	620	878.32	R116	-47 267.38	3	622	550.07
L117	-48 888.95	3	620	649.47	R117	-47 297.87	3	622	511.27
L118	-48 912.25	3	620	610.37	R118	-47 336.30	3	622	465.05
L119	-48 968.30	3	620	546.86	R119	-47 532.23	3	622	240.49
L120	-49 012.44	3	620	510.74	R120	-48 308.67	3	621	354.01
L121	-49 387.34	3	620	080.79	R121	-48 326.26	3	621	333.83
L122	-49 509.94	3	619	940.90	R122	-48 426.99	3	621	218.22
L123	-49 585.31	3	619	871.10	R123	-48 518.44	3	621	113.26
L124	-49 643.33	3	619	829.69	R124	-48 726.23	3	620	874.50
L125	-49 720.03	3	619	791.01	R125	-48 839.62	3	620	744.21
L126	-49 789.80	3	619	766.09	R126	-48 917.35	3	620	657.55
L127	-49 841.98	3	619	753.72	R127	-48 955.92	3	620	618.40
L128	-50 051.30	3	619	710.17	R128	-48 998.49	3	620	568.79
L129	-50 201.49	3	619	673.33	R129	-49 020.77	3	620	538.39
L130	-50 269.01	3	619	663.84	R130	-49 393.96	3	620	111.97
L131	-50 317.89	3	619	653.67	R131	-49 516.90	3	619	971.50
L132	-50 381.77	3	619	631.05	R132	-49 564.08	3	619	921.10
L133	-50 393.27	3	619	628.73	R133	-49 620.66	3	619	876.01
L134	-50 451.67	3	619	625.33	R134	-49 682.36	3	619	838.37
L135	-50 499.62	3	619	615.42	R135	-49 744.28	3	619	815.56
L136	-50 525.08	3	619	603.31	R136	-49 799.13	3	619	791.09
L137	-50 533.97	3	619	600.93	R137	-50 321.73	3	619	680.41
L138	-50 756.38	3	619	563.36	R138	-50 364.15	3	619	680.10
L139	-51 141.75	3	619	483.13	R139	-50 391.02	3	619	676.21
L140	-51 226.19	3	619	465.70	R140	-50 402.65	3	619	673.61
L141	-51 307.28	3	619	448.74	R141	-50 423.60	3	619	664.70
L142	-51 623.88	3	619	382.92	R142	-50 501.73	3	619	647.12
L143	-52 846.38	3	619	128.44	R143	-50 534.29	3	619	645.94
L144	-53 076.22	3	619	081.08	R144	-50 544.58	3	619	643.65
L145	-53 379.41	3	619	010.06	R145	-50 574.13	3	619	635.22
REGTERKANT/RIGHT HAND SIDE					R146	-50 655.35	3	619	616.16
R154	-52 328.40	3	619	262.13	R147	-50 698.86	3	619	601.41
R155	-52 853.88	3	619	152.67	R148	-51 127.23	3	619	512.12
R156	-52 869.00	3	619	149.33	R149	-51 227.73	3	619	491.18
R157	-53 355.43	3	619	048.55	R150	-51 306.02	3	619	474.54
R158	-53 404.38	3	619	038.41	R151	-51 360.46	3	619	462.98
					R152	-51 642.16	3	619	404.87
					R153	-51 766.69	3	619	378.93
					<div> <div>Vel Sheet</div> <div>13</div> <div>Van of</div> <div>13</div> <div>P1223/22</div> </div>				

Printed by and obtainable from the Government Printer, Bosman Street, Private Bag X85, Pretoria, 0001
Contact Centre Tel: 012-748 6200. eMail: info.egazette@gpw.gov.za
Publications: Tel: (012) 748 6053, 748 6061, 748 6065