



Government Gazette Staatskoerant

REPUBLIC OF SOUTH AFRICA
REPUBLIEK VAN SUID AFRIKA

Vol. 702

11

December
Desember 2023

No. 49845



N.B. The Government Printing Works will not be held responsible for the quality of "Hard Copies" or "Electronic Files" submitted for publication purposes

ISSN 1682-5845



9 771682 584003

AIDS HELPLINE: 0800-0123-22 Prevention is the cure

IMPORTANT NOTICE:

THE GOVERNMENT PRINTING WORKS WILL NOT BE HELD RESPONSIBLE FOR ANY ERRORS THAT MIGHT OCCUR DUE TO THE SUBMISSION OF INCOMPLETE / INCORRECT / ILLEGIBLE COPY.

No FUTURE QUERIES WILL BE HANDLED IN CONNECTION WITH THE ABOVE.

Contents

<i>No.</i>	<i>Gazette No.</i>	<i>Page No.</i>
------------	------------------------	---------------------

GOVERNMENT NOTICES • GOEWERMENTSKENNISGEWINGS**Transport, Department of/ Vervoer, Departement van**

4176	South African National Roads Agency Limited and the National Roads Act (7/1998): Repeal of Declaration No. 826 of 2021 and Re-declaration of National Road N2 Section 20X: Mount Frere to Brooksnek.....	49845	3
4176	Suid-Afrikaanse Nasionale Padagentskap Beperk en Nasionale Paaie Wet (7/1998): Intrekking van Verklaring No. 826 van 2021 en Herverklaring van Nasionale Pad N2 Seksie 20X: Mount Frere tot Brooksnek.....	49845	4

GOVERNMENT NOTICES • GOEWERMENTSKENNISGEWINGS

DEPARTMENT OF TRANSPORT

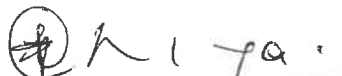
NO. 4176

11 December 2023

**THE SOUTH AFRICAN NATIONAL ROADS
AGENCY SOC LIMITED**Registration No: 1998/009584/30

**REPEAL OF DECLARATION No. 826 OF 2021 AND RE-DECLARATION OF NATIONAL ROAD N2
SECTION 20X: MOUNT FRERE TO BROOKSNEK**

By virtue of section 40(1)(b) of the South African National Roads Agency Limited and the National Roads Act 1998 (Act No. 7 of 1998), I hereby repeal Declaration No. 826 of 2021, and by virtue of section 40(1)(a) of the said Act, I hereby declare the route, as indicated on the subjoining Plan P1011/17, sheets 1 to 22, as a National Road.

(National Road N2 Section 20X: Mount Frere – Brooksnek)**MINISTER OF TRANSPORT**

DEPARTEMENT VAN VERVOER

NO. 4176

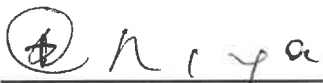
11 Desember 2023

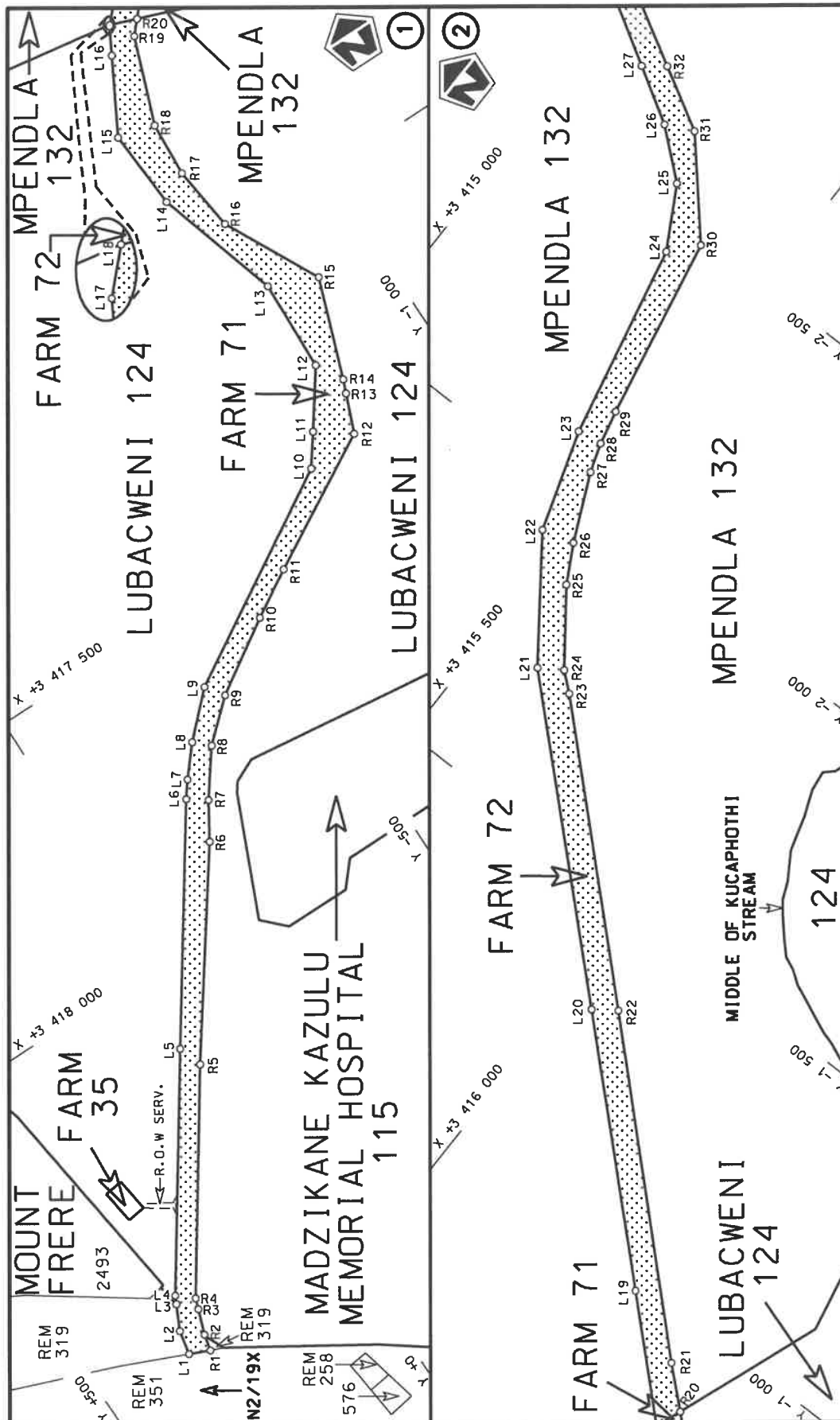
**DIE SUID-AFRIKAANSE NASIONALE
PADAGENTSKAP MSB BEPERK**

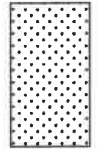
Registrasie No: 1998/009584/30

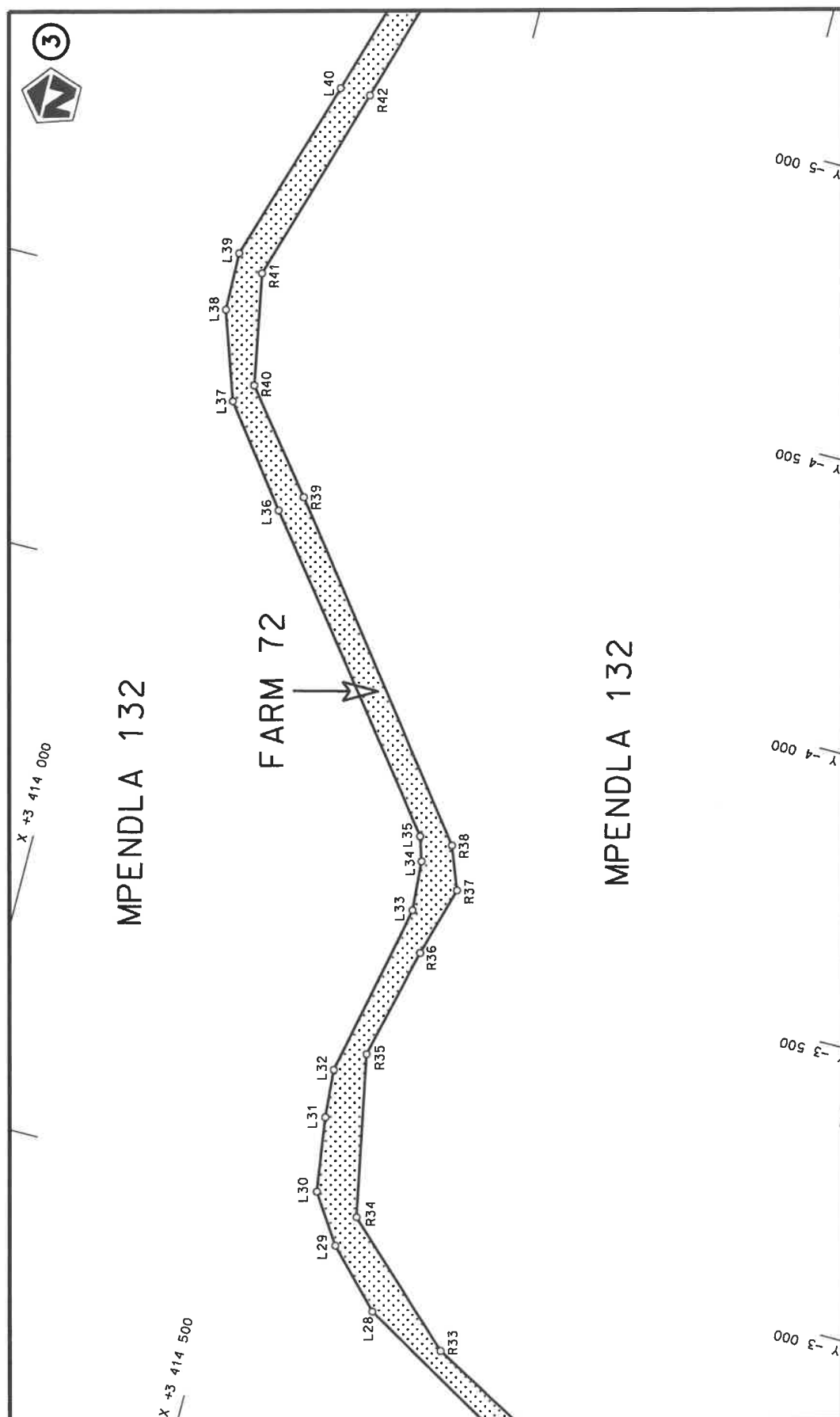
**INTREKKING VAN VERKLARING No. 826 VAN 2021 EN HERVERKLARING VAN NASIONALE PAD
N2 SEKSIE 20X: MOUNT FRERE TOT BROOKSNEK**


Kragtens Artikel 40(1)(b) van die Suid-Afrikaanse Nasionale Padagentskap Beperk en Nasionale Paaie Wet 1998 (Wet No. 7 van 1998), trek ek hiermee Verklaring No. 826 van 2021 in, en kragtens Artikel 40(1)(a) van genoemde Wet verklaar ek hiermee die roete soos aangetoon op meegaande Plan P1011/17, velle 1 tot 22, as 'n Nasionale Pad.

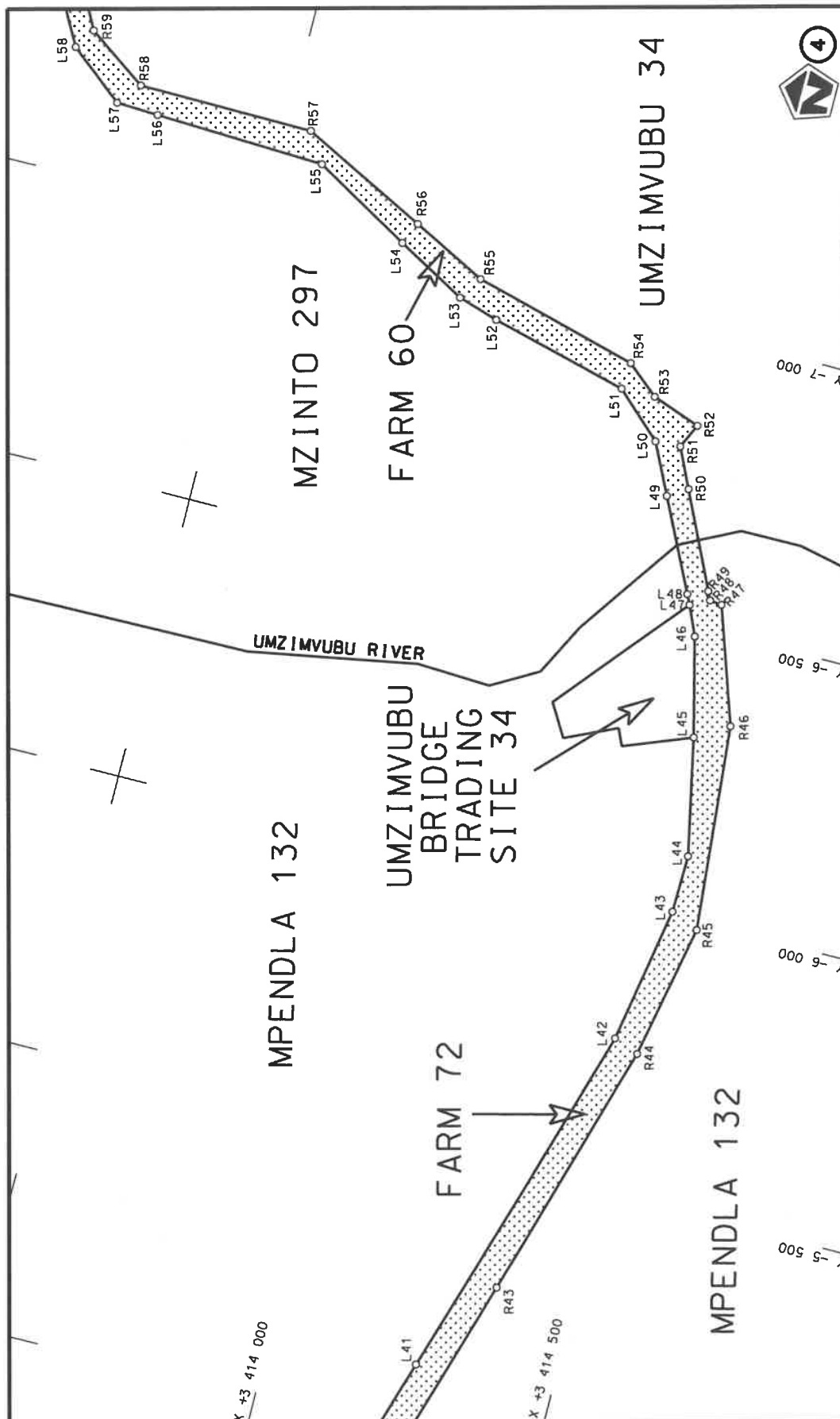
(Nasionale Pad N2 Seksie 20X: Mount Frere – Brooksnek)**MINISTER VAN VERVOER**



Die Suid Afrikaanse Nasionale Padagentskap MSB Bpk The South African National Roads Agency SOC Ltd	Die figuur getoon The figure shown		stel die padreserwe voor van 'n gedeelte represents the road reserve of a portion van Nasionale Roete N2 of National Route	Vel Sheet 1 of 22	Plan P1011/17
---	---------------------------------------	---	---	----------------------	------------------



Die Suid Afrikaanse Nasionale Padagentskap MSB Bpk	Die figuur getoon		stel die padreserwe voor van 'n gedeelte represents the road reserve of a portion van Nasionale Roete N2 of National Route	Vel Sheet	2 of	22
The South African National Roads Agency SOC Ltd	The figure shown			20X	Plan	P1011/17



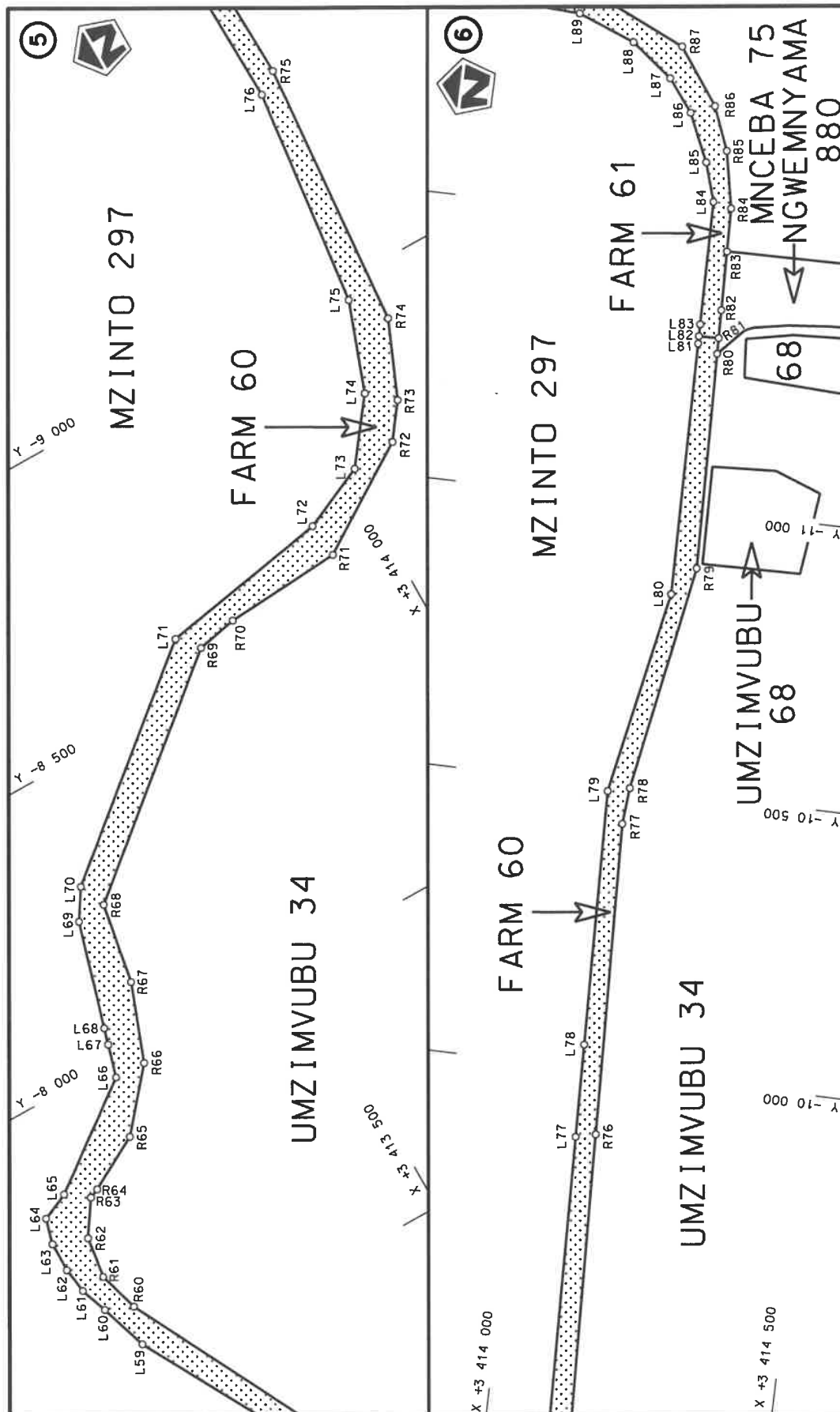
Vel
Sheet 3 of 22
Plan P1011/17

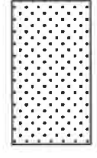
stel die padreserwe voor van 'n gedeelte
represents the road reserve of a portion
van Nasionale Roete N2 Sektie
of National Route of National Route

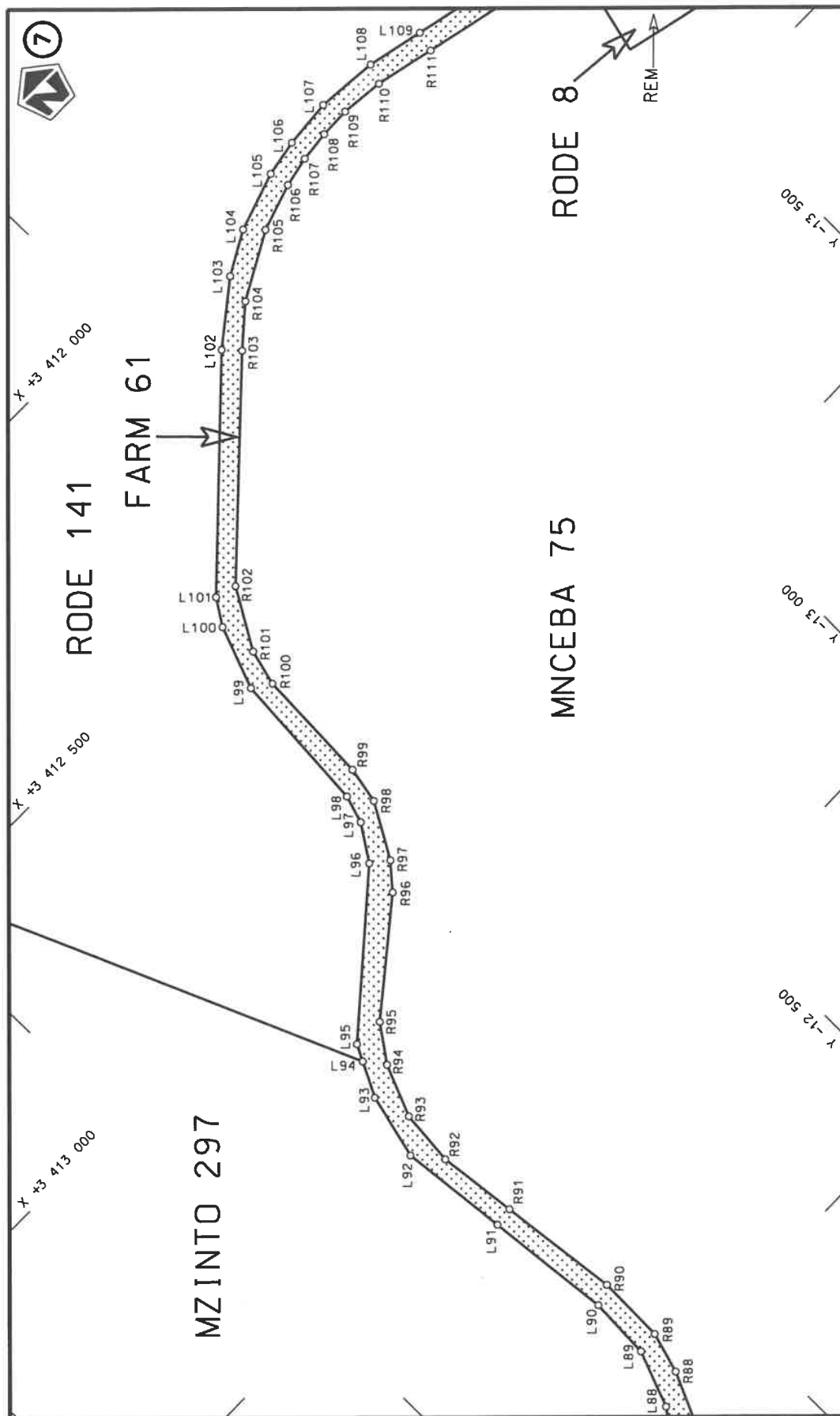


Die figuur getoon
The figure shown

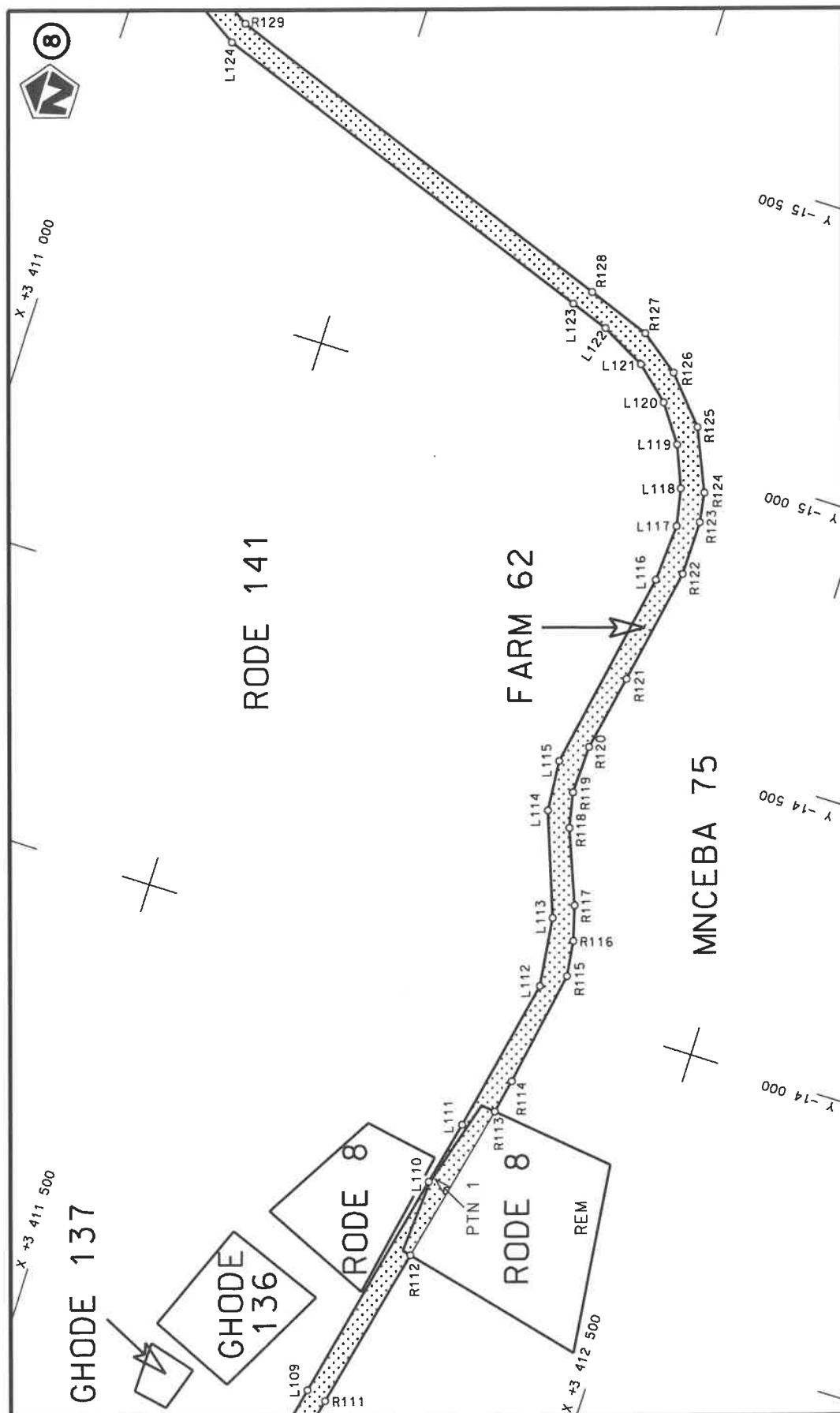
Die Suid Afrikaanse Nasionale Padagentskap MSB Bpk
The South African National Roads Agency SOC Ltd



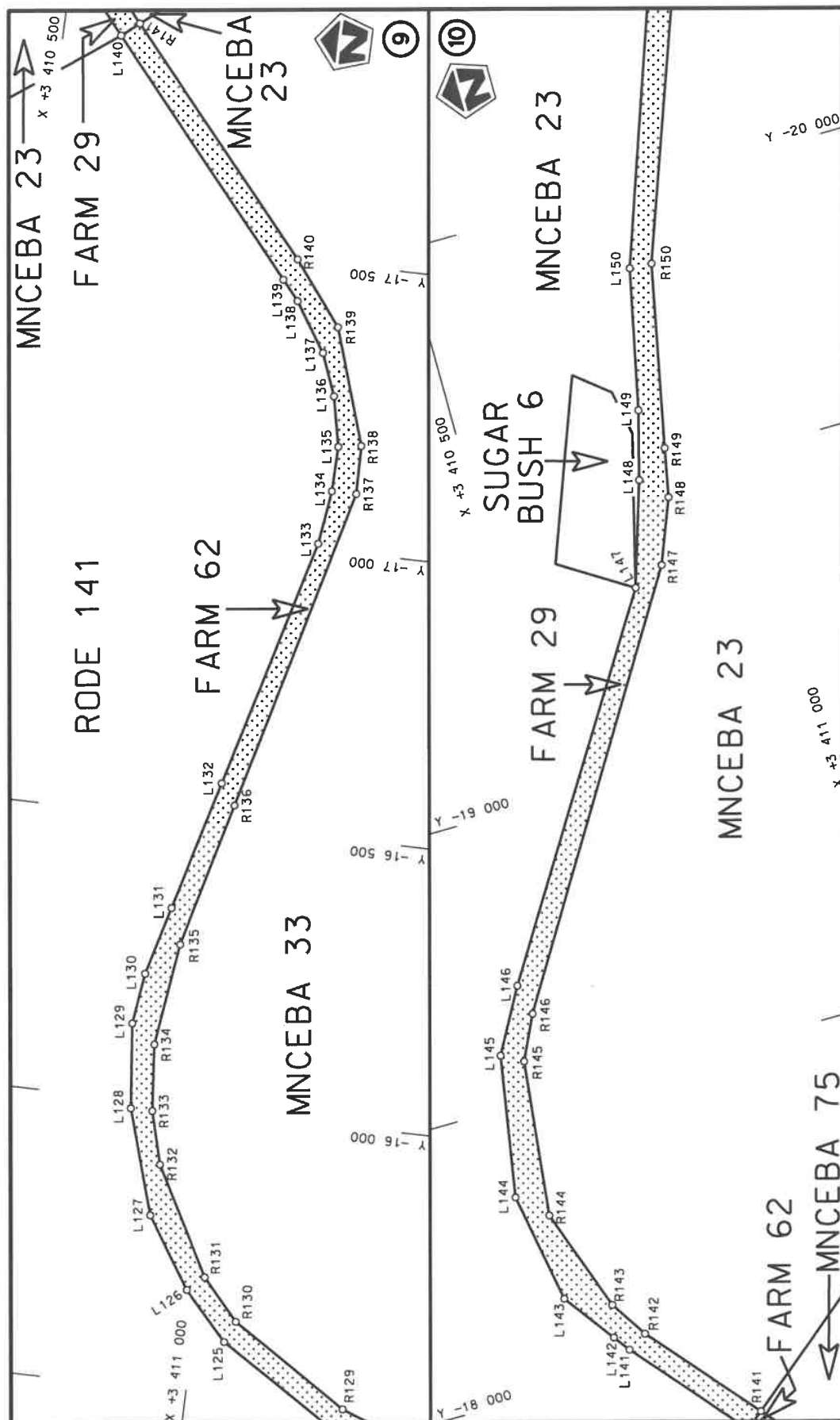
Die Suid Afrikaanse Nasionale Padagentskap MSB Bpk The South African National Roads Agency SOC Ltd	Die figuur getoon The figure shown		steldie padreserwe voor van 'n gedeelte represents the road reserve of a portion van Nasionale Roete N2 of National Route	20X	Plan P1011/17	Vel Sheet 4 of 22	van of 22
---	---------------------------------------	---	--	-----	------------------	----------------------	--------------

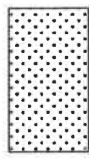


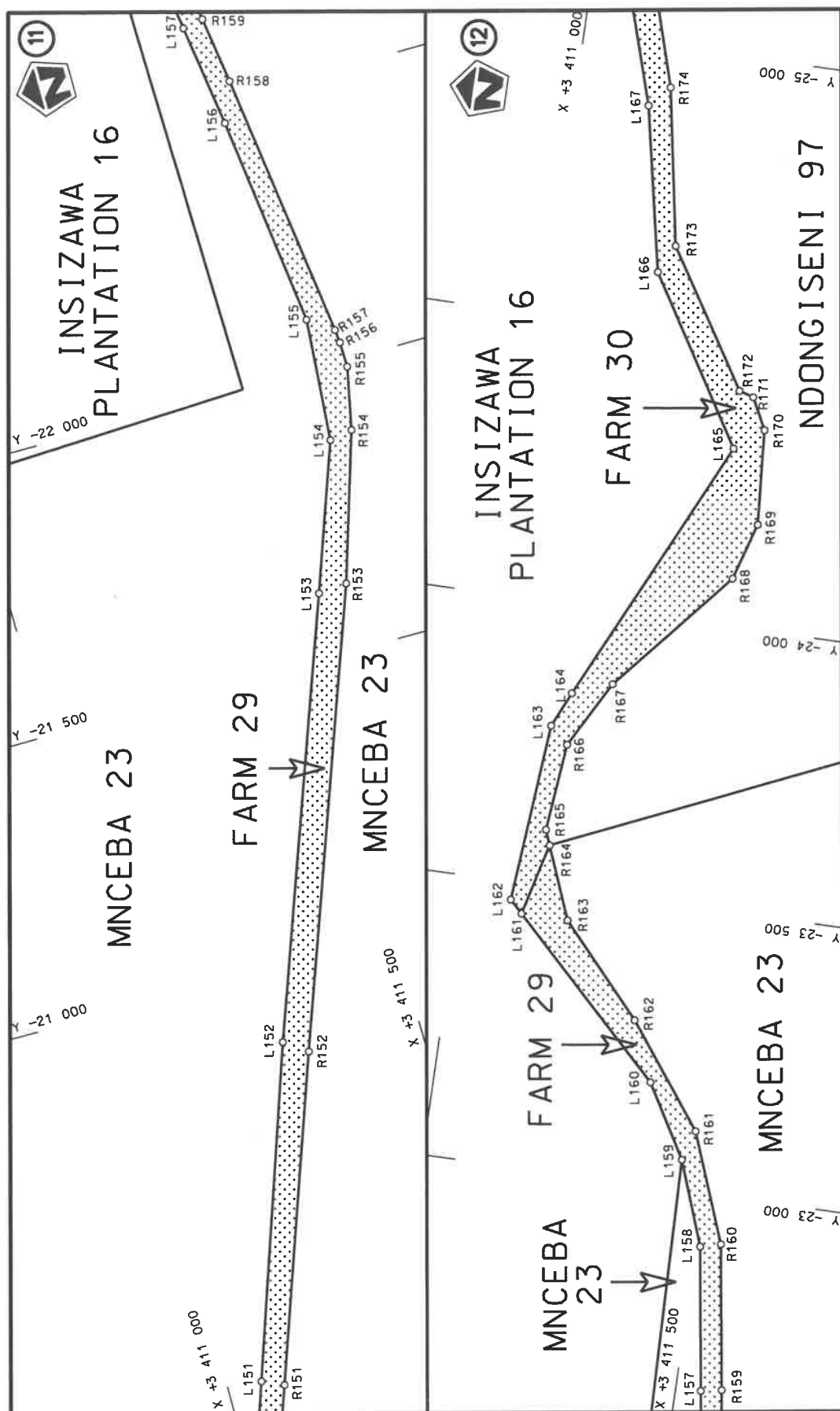
Die Suid Afrikaanse Nasionale Padagentskap MSB Bpk The South African National Roads Agency SOC Ltd	Die figuur getoon The figure shown		stel die padreserwe voor van 'n gedeelte represents the road reserve of a portion van Nasionale Roete N2 of National Route	Vel Sheet 5 of 22 Plan P1011/17
---	---------------------------------------	--	---	---------------------------------------



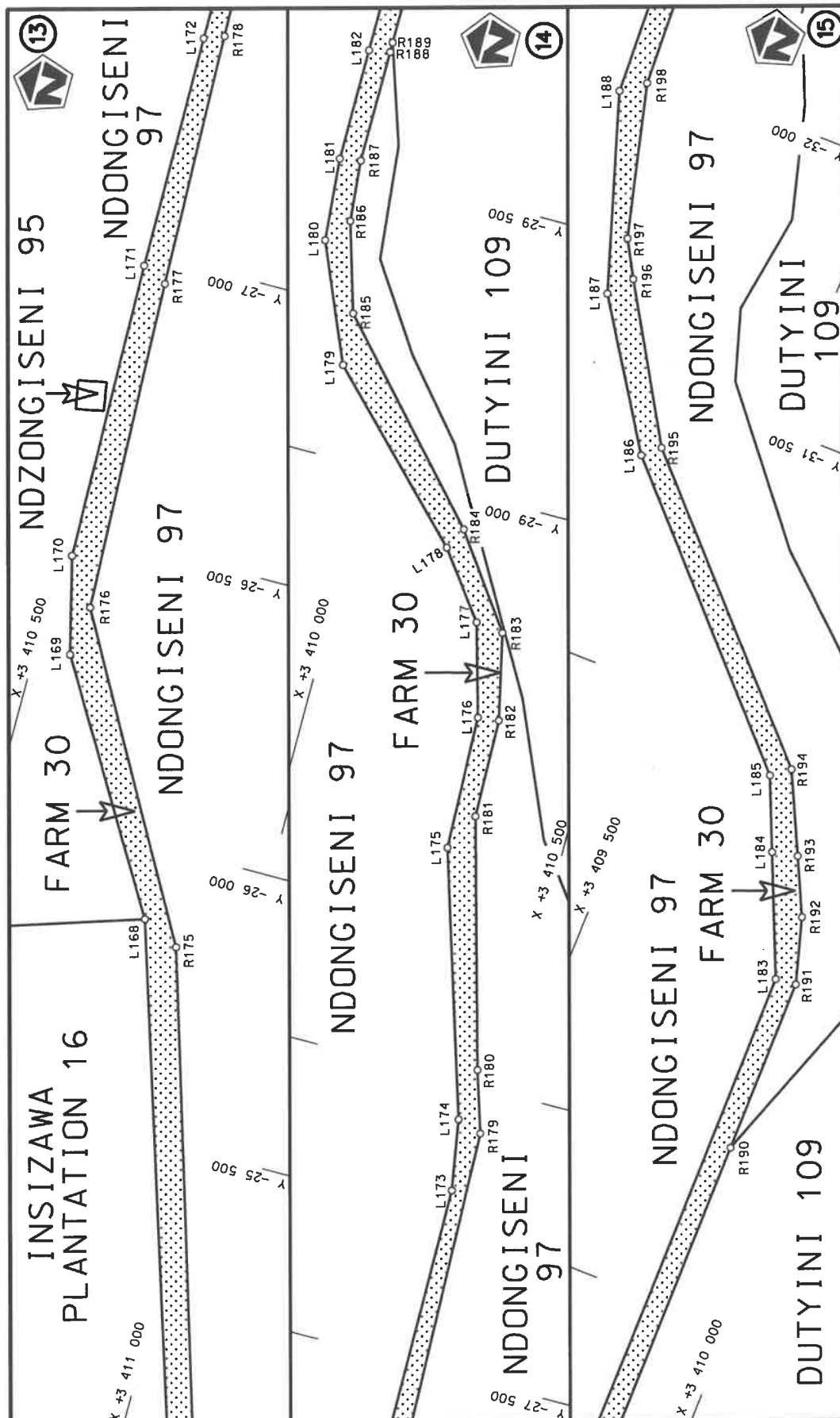
Die Suid Afrikaanse Nasionale Padagentskap MSB Bpk The South African National Roads Agency SOC Ltd	Die figuur getoon The figure shown	steldie padreserwe voor van 'n gedeelte represents the road reserve of a portion van Nasionale Roete N2 of National Route	Vel Sheet 6 van of 22
	20X Seksie Section	Plan P1011/17	



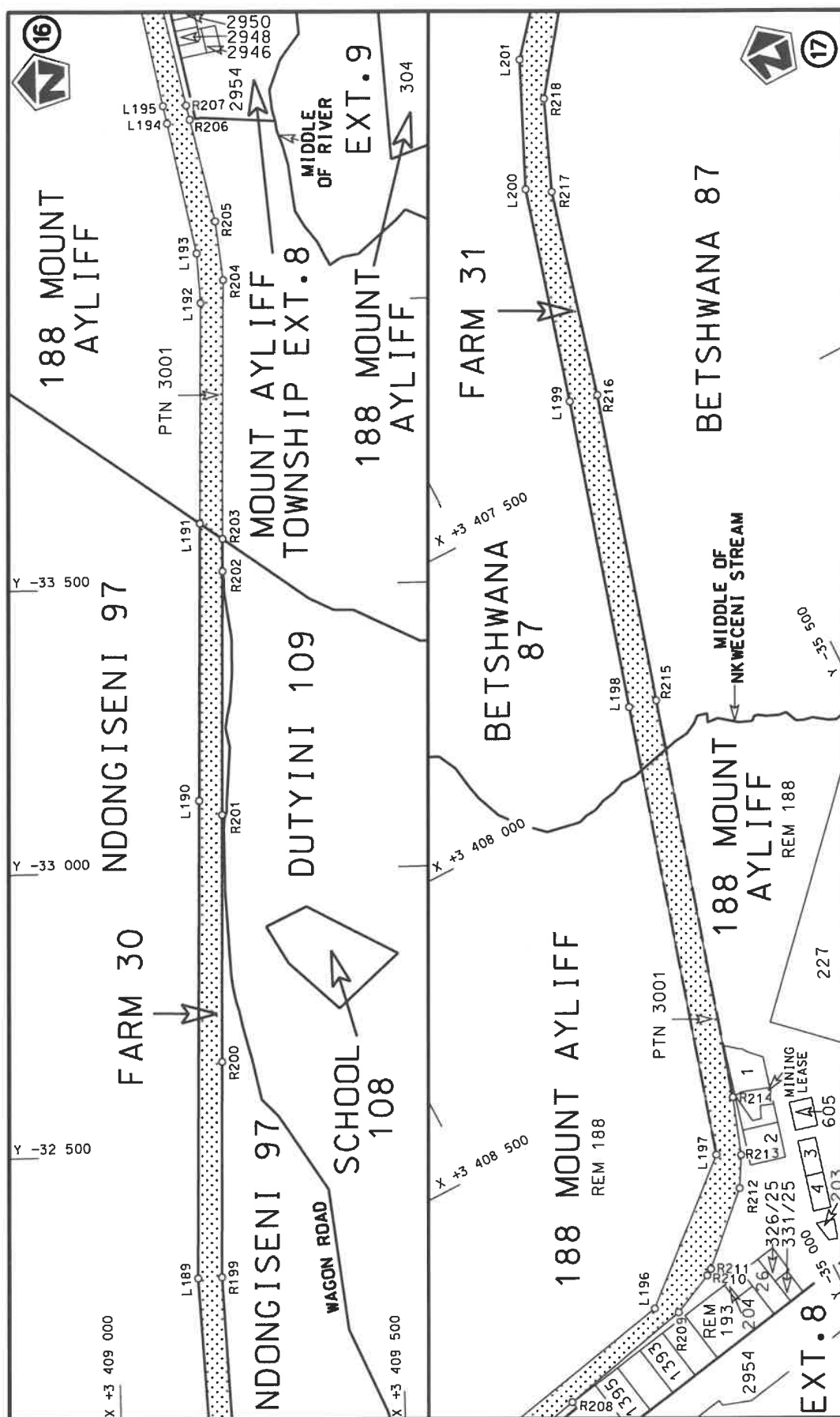
Die Suid Afrikaanse Nasionale Padagentskap MSB Bpk The South African National Roads Agency SOC Ltd	Die figuur getoon The figure shown		stel die podreserwe voor van 'n gedeelte represents the road reserve of a portion van Nasionale Roete N2 of National Route	Vel Sheet 7 of 22 Plan P1011/17
---	---------------------------------------	---	---	------------------------------------



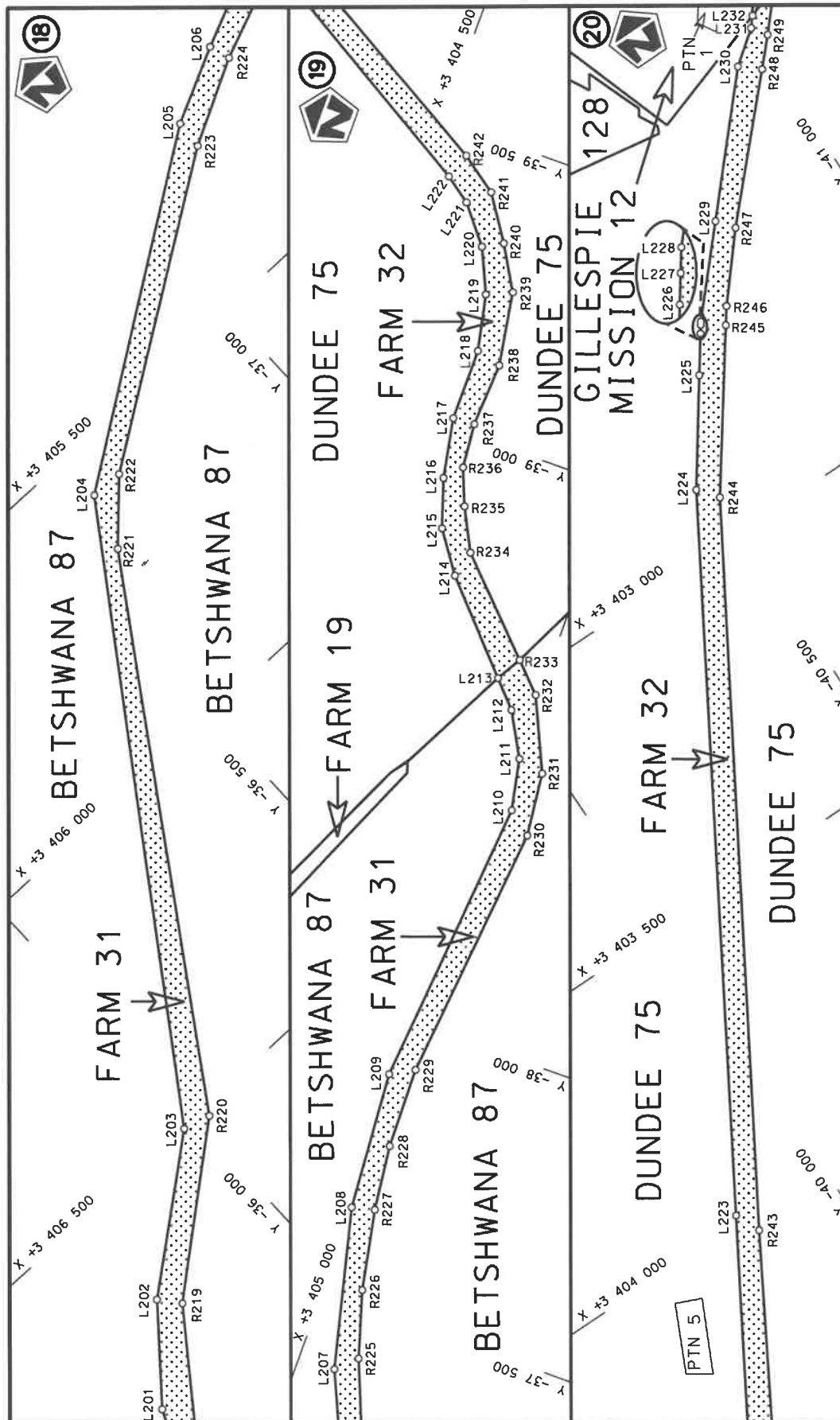
Die Suid Afrikaanse Nasionale Padagentskap MSB Bpk The South African National Roads Agency SOC Ltd	Die figuur getoon The figure shown	stel die padreserwe voor van 'n gedeelte represents the road reserve of a portion van Nasionale Roete N2 of National Route	Vel Sheet 8 of 22 Plan P1011/17
---	---------------------------------------	---	--



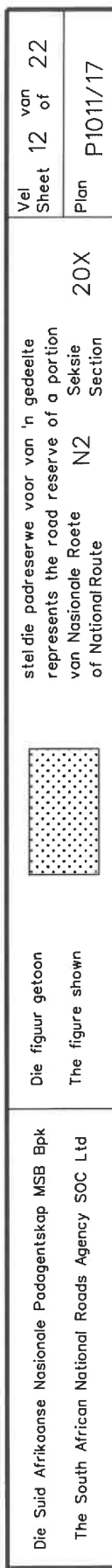
Die Suid Afrikaanse Nasionale Padagentskap MSB Bpk The South African National Roads Agency SOC Ltd	Die figuur getoon The figure shown	steldie podreserwe voor van 'n gedeelte represents the road reserve of a portion van Nasionale Roete N2 of National Route	Vel Sheet 9 of 22 Plan P1011/17
---	---------------------------------------	--	------------------------------------

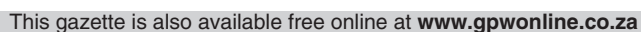



Die Suid Afrikaanse Nasionale Padagentskap MSB Bpk The South African National Roads Agency SOC Ltd	Die figuur getoon The figure shown	<div data-bbox="1305 1081 1391 1232" data-label="Image"> </div>	steldie padreserwe voor van 'n gedeelte represents the road reserve of a portion van Nasionale Roete of National Route	Vel Sheet	10 of	22
		N2	Seksie Section	20X	Plan	P1011/17

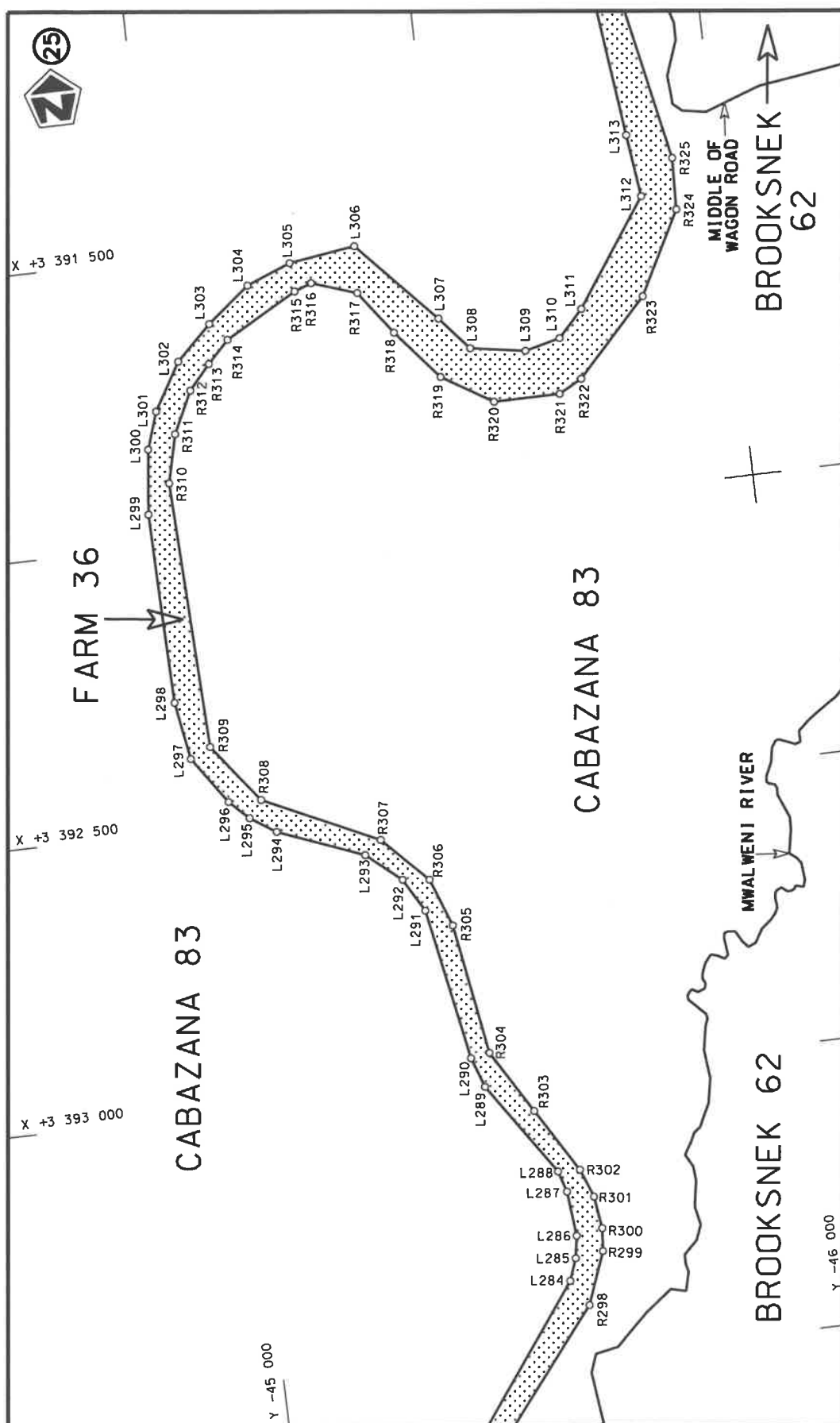


Die Suid Afrikaanse Nasionale Padagentskap MSB Bpk The South African National Roads Agency SOC Ltd	Die figuur getoon The figure shown	steldie padreserwe voor van 'n gedeelte represents the road reserve of a portion van Nasionale Roete N2 of National Route	Vel Sheet 11 of 22 Plan P1011/17
---	---------------------------------------	--	-------------------------------------





Die Suid Afrikaanse Nasionale Padagentskap MSB Bpk	Die figuur getoon		stel die padreserwe voor van 'n gedeelte represents the road reserve of a portion	Vel Sheet 13 of 22
The South African National Roads Agency SOC Ltd	The figure shown		van Nasionale Roete N2 of National Route	Plan P1011/17



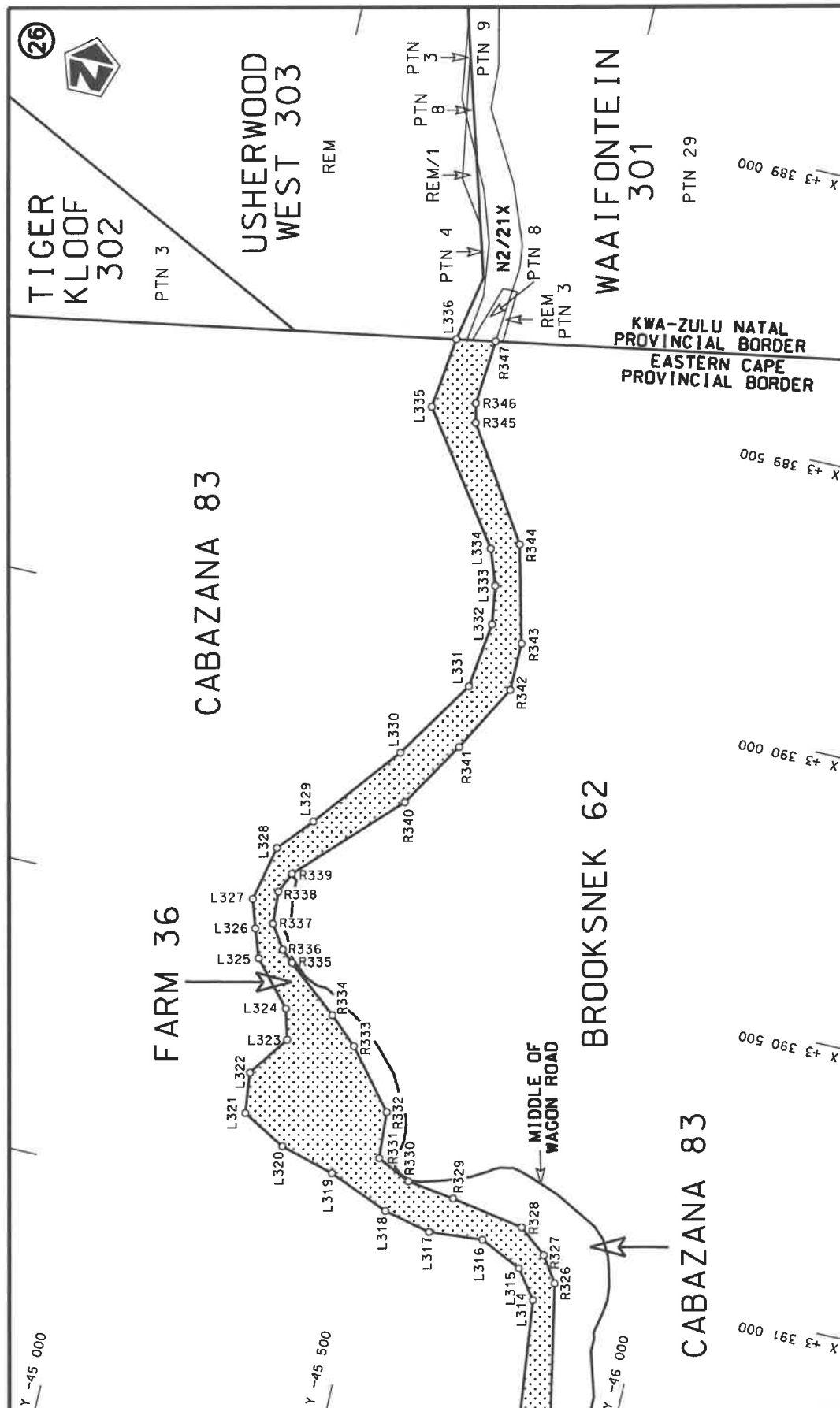
Vel
Sheet 14 of 22
Plan P1011/17

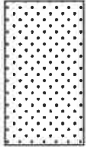
steeldie padreserwe voor van 'n gedeelte
represents the road reserve of a portion
van Nasionale Roete N2 Seksie 20X
of National Route Section



Die figuur getoon
The figure shown

Die Suid Afrikaanse Nasionale Padagentskap MSB Bpk
The South African National Roads Agency SOC Ltd



Die Suid Afrikaanse Nasionale Padogentskap MSB Bpk The South African National Roads Agency SOC Ltd	Die figuur getoon The figure shown	steldie padreserwe voor van 'n gedeelte represents the road reserve of a portion van Nasionale Roete N2 of National Route	Vel Sheet 15 van 22
		20X Sektie Section	Plan P1011/17

PADRESERWE KOÖRDINATE / ROAD RESERVE CO-ORDINATES						
LINKERKANT/LEFT HAND SIDE				REGTERKANT/RIGHT HAND SIDE		
	Y	X	WG 29 ^e		Y	X
L1	340.70	3 418 612.18		R1	306.02	3 418 627.11
L2	332.31	3 418 569.59		R2	299.51	3 418 598.42
L3	311.68	3 418 526.78		R3	284.07	3 418 555.17
L4	305.12	3 418 513.18		R4	277.52	3 418 536.80
L5	61.48	3 418 155.85		R5	47.12	3 418 198.03
L6	-186.45	3 417 795.98		R6	-180.08	3 417 880.88
L7	-207.03	3 417 768.50		R7	-218.12	3 417 818.72
L8	-249.73	3 417 718.23		R8	-275.06	3 417 741.81
L9	-320.54	3 417 649.16		R9	-342.64	3 417 680.92
L10	-685.59	3 417 431.81		R10	-467.73	3 417 601.04
L11	-723.42	3 417 379.49		R11	-548.75	3 417 552.91
L12	-790.63	3 417 284.72		R12	-781.21	3 417 421.57
L13	-796.02	3 417 123.03		R13	-808.00	3 417 354.94
L14	-728.22	3 416 902.31		R14	-817.46	3 417 331.61
L15	-719.55	3 416 762.43		R15	-879.13	3 417 158.38
L16	-788.49	3 416 636.25		R16	-792.66	3 416 990.62
L17	-812.97	3 416 591.17		R17	-778.11	3 416 874.94
L18	-814.70	3 416 589.30		R18	-783.75	3 416 779.20
L19	-978.10	3 416 413.48		R19	-839.44	3 416 629.14
L20	-1 317.06	3 416 047.52		R20	-860.17	3 416 606.26
L21	-1 728.01	3 415 603.09		R21	-917.89	3 416 541.42
L22	-1 922.76	3 415 460.36		R22	-1 344.43	3 416 085.92
L23	-2 096.88	3 415 403.21		R23	-1 726.52	3 415 674.62
L24	-2 438.28	3 415 329.15		R24	-1 753.58	3 415 642.18
L25	-2 543.08	3 415 269.82		R25	-1 873.09	3 415 552.62
L26	-2 610.42	3 415 188.72		R26	-1 938.34	3 415 516.84
L27	-2 666.01	3 415 093.63		R27	-2 053.88	3 415 463.64
L28	-2 847.19	3 414 783.65		R28	-2 104.22	3 415 446.60
L29	-2 943.09	3 414 691.79		R29	-2 164.18	3 415 432.93
L30	-3 027.33	3 414 636.89		R30	-2 484.47	3 415 369.76
L31	-3 157.74	3 414 618.58		R31	-2 633.84	3 415 237.07
L32	-3 242.11	3 414 612.23		R32	-2 693.23	3 415 129.21
L33	-3 548.33	3 414 677.75		R33	-2 809.61	3 414 917.87
L34	-3 635.33	3 414 671.59		R34	-3 000.92	3 414 715.49
L35	-3 677.42	3 414 658.29		R35	-3 283.23	3 414 661.35
L36	-4 170.81	3 414 275.19		R36	-3 478.92	3 414 709.21
L37	-4 337.06	3 414 150.05		R37	-3 601.29	3 414 744.69
L38	-4 489.62	3 414 098.15		R38	-3 675.67	3 414 716.52
L39	-4 591.38	3 414 096.29		R39	-4 204.05	3 414 311.78
L40	-4 915.30	3 414 194.93		R40	-4 373.03	3 414 179.34
L41	-5 128.02	3 414 259.71		R41	-4 567.02	3 414 143.49
L42	-5 767.57	3 414 454.25		R42	-4 915.78	3 414 248.07
L43	-6 007.35	3 414 496.30		R43	-5 293.07	3 414 361.21
L44	-6 108.25	3 414 498.62		R44	-5 750.58	3 414 498.40
L45	-6 312.41	3 414 456.49		R45	-5 986.83	3 414 545.30
L46	-6 484.20	3 414 414.39		R46	-6 347.07	3 414 514.02
L47	-6 535.60	3 414 391.86		R47	-6 549.36	3 414 445.86
L48	-6 552.94	3 414 383.35		R48	-6 551.91	3 414 424.77
L49	-6 710.78	3 414 305.96		R49	-6 566.83	3 414 417.72
L50	-6 798.28	3 414 263.05		R50	-6 731.46	3 414 339.84
L51	-6 873.04	3 414 182.65		R51	-6 800.41	3 414 307.23
				Vel Sheet 16	Van of 22	P1011/17

PADRESERWE KOÖRDINATE / ROAD RESERVE CO-ORDINATES									
LINKERKANT/LEFT HAND SIDE					REGTERKANT/RIGHT HAND SIDE				
	Y	X	WG 29 ^a		Y	X			
L52	-6 935.71	3 413 939.50		R52	-6 842.77	3 414 327.14			
L53	-6 958.15	3 413 868.99		R53	-6 873.69	3 414 242.25			
L54	-7 026.30	3 413 748.53		R54	-6 920.27	3 414 187.00			
L55	-7 125.00	3 413 577.73		R55	-6 998.19	3 413 895.28			
L56	-7 137.59	3 413 277.61		R56	-7 065.08	3 413 766.26			
L57	-7 140.99	3 413 204.11		R57	-7 176.74	3 413 544.34			
L58	-7 217.50	3 413 109.99		R58	-7 180.50	3 413 236.52			
L59	-7 541.92	3 412 931.37		R59	-7 253.07	3 413 133.10			
L60	-7 626.90	3 412 903.59		R60	-7 607.30	3 412 950.69			
L61	-7 675.08	3 412 886.11		R61	-7 679.06	3 412 929.60			
L62	-7 720.74	3 412 879.33		R62	-7 751.62	3 412 939.63			
L63	-7 773.06	3 412 879.79		R63	-7 811.58	3 412 978.97			
L64	-7 817.72	3 412 892.00		R64	-7 819.00	3 412 995.63			
L65	-7 839.65	3 412 940.18		R65	-7 871.72	3 413 090.86			
L66	-7 974.67	3 413 121.04		R66	-7 972.57	3 413 176.32			
L67	-8 031.74	3 413 137.30		R67	-8 108.37	3 413 226.18			
L68	-8 060.34	3 413 145.46		R68	-8 250.36	3 413 250.97			
L69	-8 245.63	3 413 198.26		R69	-8 561.36	3 413 620.21			
L70	-8 297.80	3 413 231.37		R70	-8 576.18	3 413 691.96			
L71	-8 596.95	3 413 589.28		R71	-8 591.02	3 413 901.80			
L72	-8 652.61	3 413 895.14		R72	-8 712.62	3 414 090.13			
L73	-8 704.14	3 414 009.31		R73	-8 772.60	3 414 134.00			
L74	-8 811.06	3 414 089.60		R74	-8 906.32	3 414 189.50			
L75	-8 968.33	3 414 145.03		R75	-9 385.54	3 414 224.81			
L76	-9 358.47	3 414 187.55		R76	-9 896.29	3 414 206.72			
L77	-9 887.71	3 414 172.35		R77	-10 444.73	3 414 187.29			
L78	-10 050.80	3 414 167.66		R78	-10 508.91	3 414 192.86			
L79	-10 499.17	3 414 154.74		R79	-10 906.67	3 414 262.74			
L80	-10 856.24	3 414 223.42		R80	-11 285.61	3 414 253.02			
L81	-11 299.54	3 414 217.27		R81	-11 313.28	3 414 252.32			
L82	-11 312.64	3 414 217.09		R82	-11 362.64	3 414 251.05			
L83	-11 333.48	3 414 216.80		R83	-11 466.26	3 414 248.39			
L84	-11 550.00	3 414 213.79		R84	-11 542.22	3 414 246.45			
L85	-11 617.43	3 414 192.53		R85	-11 641.65	3 414 226.55			
L86	-11 700.65	3 414 154.49		R86	-11 717.47	3 414 195.80			
L87	-11 756.63	3 414 111.26		R87	-11 814.68	3 414 125.30			
L88	-11 811.85	3 414 039.72		R88	-11 867.73	3 414 008.63			
L89	-11 850.68	3 413 939.89		R89	-11 889.35	3 413 935.56			
L90	-11 856.45	3 413 829.64		R90	-11 892.43	3 413 815.22			
L91	-11 833.30	3 413 603.32		R91	-11 867.75	3 413 599.59			
L92	-11 813.39	3 413 408.61		R92	-11 851.42	3 413 456.93			
L93	-11 842.44	3 413 292.71		R93	-11 860.49	3 413 358.27			
L94	-11 872.98	3 413 232.76		R94	-11 898.41	3 413 267.21			
L95	-11 887.59	3 413 204.08		R95	-11 943.53	3 413 205.08			
L96	-12 129.81	3 412 996.34		R96	-12 122.05	3 413 061.50			
L97	-12 170.89	3 412 934.98		R97	-12 159.57	3 413 019.04			
L98	-12 186.44	3 412 885.86		R98	-12 213.67	3 412 925.18			
L99	-12 204.04	3 412 631.64		R99	-12 226.81	3 412 859.94			
L100	-12 245.80	3 412 520.50		R100	-12 236.31	3 412 653.02			
L101	-12 275.12	3 412 475.39		R101	-12 252.64	3 412 589.22			
L102	-12 592.25	3 412 177.36		R102	-12 313.11	3 412 486.31			
					Vel Sheet 17	Van of 22	P1011/17		

PADRESERWE KOÖRDINATE / ROAD RESERVE CO-ORDINATES									
LINKERKANT/LEFT HAND SIDE					REGTERKANT/RIGHT HAND SIDE				
	Y	X	WG	29°		Y	X		
L103	-12 694.99	3 412 097.08			R103	-12 616.61	3 412 204.09		
L104	-12 769.46	3 412 055.82			R104	-12 682.25	3 412 147.39		
L105	-12 873.35	3 412 021.79			R105	-12 796.66	3 412 084.38		
L106	-12 937.92	3 412 009.81			R106	-12 880.22	3 412 056.97		
L107	-13 023.81	3 412 002.51			R107	-12 933.81	3 412 045.75		
L108	-13 132.64	3 412 011.99			R108	-12 988.45	3 412 039.83		
L109	-13 232.80	3 412 034.40			R109	-13 042.70	3 412 038.35		
L110	-13 647.97	3 412 127.27			R110	-13 118.78	3 412 045.92		
L111	-13 760.94	3 412 152.54			R111	-13 223.73	3 412 069.71		
L112	-14 035.47	3 412 209.98			R112	-13 514.34	3 412 135.58		
L113	-14 156.58	3 412 194.91			R113	-13 800.48	3 412 200.42		
L114	-14 334.85	3 412 130.06			R114	-13 860.29	3 412 212.95		
L115	-14 423.91	3 412 122.83			R115	-14 066.10	3 412 249.99		
L116	-14 779.48	3 412 188.91			R116	-14 128.73	3 412 241.99		
L117	-14 880.65	3 412 195.40			R117	-14 189.48	3 412 225.33		
L118	-14 946.23	3 412 182.43			R118	-14 316.88	3 412 175.45		
L119	-15 017.83	3 412 152.82			R119	-14 378.45	3 412 162.55		
L120	-15 081.48	3 412 107.81			R120	-14 463.22	3 412 165.22		
L121	-15 133.59	3 412 049.06			R121	-14 597.46	3 412 192.34		
L122	-15 175.49	3 411 969.77			R122	-14 803.53	3 412 231.25		
L123	-15 199.66	3 411 902.95			R123	-14 899.32	3 412 232.45		
L124	-15 457.54	3 411 189.81			R124	-14 951.54	3 412 224.59		
L125	-15 589.10	3 410 982.21			R125	-15 058.09	3 412 178.01		
L126	-15 672.09	3 410 906.34			R126	-15 136.75	3 412 108.75		
L127	-15 794.68	3 410 827.20			R127	-15 187.99	3 412 039.87		
L128	-15 977.09	3 410 770.56			R128	-15 228.99	3 411 928.44		
L129	-16 125.47	3 410 755.13			R129	-15 496.13	3 411 202.27		
L130	-16 214.56	3 410 767.40			R130	-15 626.89	3 410 998.00		
L131	-16 334.78	3 410 799.55			R131	-15 697.83	3 410 934.93		
L132	-16 562.52	3 410 860.42			R132	-15 884.96	3 410 833.32		
L133	-16 999.28	3 410 977.17			R133	-15 977.03	3 410 808.77		
L134	-17 093.52	3 410 989.96			R134	-16 093.39	3 410 798.36		
L135	-17 172.18	3 410 991.74			R135	-16 272.86	3 410 822.12		
L136	-17 259.09	3 410 973.58			R136	-16 526.45	3 410 887.28		
L137	-17 332.44	3 410 944.86			R137	-17 093.92	3 411 033.10		
L138	-17 417.44	3 410 889.76			R138	-17 178.48	3 411 031.79		
L139	-17 451.56	3 410 860.63			R139	-17 380.09	3 410 965.77		
L140	-17 842.86	3 410 527.32			R140	-17 489.94	3 410 881.00		
L141	-18 033.31	3 410 365.10			R141	-17 867.52	3 410 557.62		
L142	-18 061.29	3 410 344.58			R142	-18 053.30	3 410 398.49		
L143	-18 150.28	3 410 279.33			R143	-18 117.34	3 410 357.16		
L144	-18 344.85	3 410 244.05			R144	-18 298.19	3 410 293.00		
L145	-18 591.79	3 410 285.22			R145	-18 570.87	3 410 322.19		
L146	-18 702.06	3 410 346.32			R146	-18 647.48	3 410 358.99		
L147	-19 319.59	3 410 731.49			R147	-19 345.79	3 410 785.54		
L148	-19 499.79	3 410 787.61			R148	-19 457.40	3 410 828.77		
L149	-19 618.27	3 410 818.79			R149	-19 542.34	3 410 845.10		
L150	-19 862.37	3 410 870.18			R150	-19 860.30	3 410 908.92		
L151	-20 308.00	3 411 024.69			R151	-20 291.00	3 411 062.79		
L152	-20 876.73	3 411 221.89			R152	-20 848.15	3 411 261.82		
L153	-21 624.39	3 411 495.33			R153	-21 628.45	3 411 546.82		
Vel Sheet 18					Van of 22		P1011/17		

PADRESERVE KOÖRDINATE / ROAD RESERVE CO-ORDINATES										
LINKERKANT/LEFT HAND SIDE						REGTERKANT/RIGHT HAND SIDE				
	Y		X	WG 29°			Y		X	
L154	-21 880.26	3 411	587.16			R154	-21 887.43	3 411	628.20	
L155	-22 096.71	3 411	602.86			R155	-21 997.27	3 411	650.54	
L156	-22 470.60	3 411	555.72			R156	-22 041.99	3 411	649.20	
L157	-22 651.67	3 411	529.12			R157	-22 065.53	3 411	646.69	
L158	-22 904.33	3 411	492.01			R158	-22 539.56	3 411	583.17	
L159	-23 052.17	3 411	438.26			R159	-22 658.16	3 411	565.64	
L160	-23 180.26	3 411	364.05			R160	-22 913.84	3 411	527.84	
L161	-23 444.26	3 411	096.08			R161	-23 105.33	3 411	455.23	
L162	-23 466.20	3 411	073.82			R162	-23 285.19	3 411	320.91	
L163	-23 780.65	3 411	101.38			R163	-23 443.79	3 411	178.58	
L164	-23 842.57	3 411	129.39			R164	-23 570.88	3 411	128.65	
L165	-24 310.28	3 411	351.00			R165	-23 597.30	3 411	118.27	
L166	-24 600.38	3 411	173.71			R166	-23 751.33	3 411	133.94	
L167	-24 889.32	3 411	115.21			R167	-23 868.36	3 411	198.29	
L168	-25 870.77	3 410	808.23			R168	-24 082.48	3 411	381.92	
L169	-26 285.31	3 410	561.70			R169	-24 182.85	3 411	412.82	
L170	-26 453.47	3 410	520.38			R170	-24 349.82	3 411	401.07	
L171	-26 977.31	3 410	512.02			R171	-24 404.72	3 411	372.84	
L172	-27 388.11	3 410	508.99			R172	-24 412.48	3 411	347.10	
L173	-27 822.45	3 410	505.79			R173	-24 650.44	3 411	198.02	
L174	-27 946.09	3 410	484.95			R174	-24 926.12	3 411	149.02	
L175	-28 401.71	3 410	343.53			R175	-25 836.97	3 410	873.19	
L176	-28 635.76	3 410	336.48			R176	-26 373.94	3 410	574.53	
L177	-28 796.46	3 410	291.33			R177	-26 955.75	3 410	555.01	
L178	-28 909.62	3 410	206.79			R178	-27 401.09	3 410	542.89	
L179	-29 172.71	3 409	948.42			R179	-27 931.98	3 410	528.44	
L180	-29 375.65	3 409	861.90			R180	-28 038.27	3 410	494.78	
L181	-29 520.21	3 409	849.48			R181	-28 467.53	3 410	376.73	
L182	-29 716.48	3 409	849.51			R182	-28 640.21	3 410	373.39	
L183	-30 602.25	3 409	849.64			R183	-28 790.29	3 410	339.93	
L184	-30 806.75	3 409	760.83			R184	-28 948.12	3 410	227.43	
L185	-30 930.28	3 409	707.19			R185	-29 264.44	3 409	942.42	
L186	-31 366.64	3 409	287.44			R186	-29 419.48	3 409	895.71	
L187	-31 607.46	3 409	126.56			R187	-29 526.11	3 409	885.84	
L188	-31 944.52	3 409	013.38			R188	-29 723.02	3 409	885.86	
L189	-32 284.89	3 408	995.65			R189	-29 740.39	3 409	885.86	
L190	-33 126.81	3 409	015.60			R190	-30 298.35	3 409	885.90	
L191	-33 614.97	3 409	027.10			R191	-30 606.52	3 409	885.92	
L192	-34 002.90	3 409	036.24			R192	-30 720.00	3 409	852.09	
L193	-34 090.48	3 409	031.11			R193	-30 816.81	3 409	805.09	
L194	-34 320.11	3 408	983.44			R194	-30 954.03	3 409	738.47	
L195	-34 350.99	3 408	977.03			R195	-31 392.11	3 409	315.42	
L196	-34 762.36	3 408	891.63			R196	-31 647.54	3 409	159.12	
L197	-34 983.39	3 408	700.56			R197	-31 709.96	3 409	122.85	
L198	-35 208.75	3 407	928.95			R198	-31 975.08	3 409	052.79	
L199	-35 362.61	3 407	402.16			R199	-32 286.06	3 409	037.59	
L200	-35 464.45	3 407	034.60			R200	-32 665.90	3 409	045.78	
L201	-35 559.25	3 406	826.67			R201	-33 101.09	3 409	055.17	
L202	-35 683.00	3 406	679.24			R202	-33 529.78	3 409	064.89	
L203	-35 920.46	3 406	491.51			R203	-33 586.88	3 409	066.18	
L204	-36 557.00	3 405	570.73			R204	-34 042.43	3 409	076.51	
						<div> <div>Vel Sheet 19</div> <div>Van of 22</div> <div>P1011/17</div> </div>				

PADRESERWE KOÖRDINATE / ROAD RESERVE CO-ORDINATES									
LINKERKANT/LEFT HAND SIDE					REGTERKANT/RIGHT HAND SIDE				
	Y		X	WG 29°		Y		X	
L205	-37 106.60	3	405	194.55	R205	-34 145.80	3	409	064.45
L206	-37 235.31	3	405	130.85	R206	-34 325.86	3	409	023.66
L207	-37 381.86	3	405	065.46	R207	-34 351.14	3	409	017.94
L208	-37 658.64	3	404	997.54	R208	-34 557.60	3	408	971.17
L209	-37 900.05	3	404	979.98	R209	-34 796.89	3	408	916.96
L210	-38 406.59	3	405	024.21	R210	-34 871.48	3	408	882.46
L211	-38 495.87	3	405	006.18	R211	-34 882.56	3	408	875.28
L212	-38 571.41	3	404	964.02	R212	-34 992.54	3	408	771.87
L213	-38 616.02	3	404	922.91	R213	-35 021.79	3	408	721.12
L214	-38 758.99	3	404	791.14	R214	-35 055.57	3	408	623.82
L215	-38 829.06	3	404	741.82	R215	-35 256.33	3	407	940.25
L216	-38 912.88	3	404	714.15	R216	-35 410.72	3	407	414.56
L217	-39 016.98	3	404	694.83	R217	-35 503.10	3	407	059.67
L218	-39 141.83	3	404	695.26	R218	-35 566.01	3	406	907.44
L219	-39 239.21	3	404	674.48	R219	-35 710.64	3	406	714.08
L220	-39 315.47	3	404	639.77	R220	-35 967.85	3	406	504.46
L221	-39 379.01	3	404	587.64	R221	-36 523.70	3	405	667.40
L222	-39 411.35	3	404	543.44	R222	-36 613.85	3	405	573.08
L223	-39 766.07	3	403	946.78	R223	-37 102.57	3	405	243.60
L224	-40 415.52	3	402	853.46	R224	-37 246.32	3	405	167.07
L225	-40 531.57	3	402	690.08	R225	-37 413.82	3	405	098.96
L226	-40 574.00	3	402	630.43	R226	-37 528.75	3	405	064.41
L227	-40 582.49	3	402	618.48	R227	-37 668.35	3	405	037.18
L228	-40 585.97	3	402	613.59	R228	-37 781.97	3	405	023.70
L229	-40 704.90	3	402	482.16	R229	-37 922.69	3	405	020.52
L230	-40 887.82	3	402	280.23	R230	-38 374.17	3	405	064.92
L231	-40 944.53	3	402	237.11	R231	-38 484.89	3	405	052.70
L232	-40 958.54	3	402	220.54	R232	-38 610.40	3	404	995.07
L233	-41 196.60	3	401	939.04	R233	-38 658.32	3	404	947.99
L234	-41 205.99	3	401	927.94	R234	-38 805.93	3	404	802.96
L235	-41 241.43	3	401	841.52	R235	-38 878.66	3	404	765.79
L236	-41 252.71	3	401	747.14	R236	-38 941.70	3	404	740.26
L237	-41 244.46	3	401	676.02	R237	-39 019.28	3	404	732.88
L238	-41 229.92	3	401	639.50	R238	-39 130.47	3	404	738.95
L239	-41 214.80	3	401	601.55	R239	-39 258.56	3	404	717.73
L240	-41 175.22	3	401	531.62	R240	-39 333.77	3	404	673.63
L241	-41 095.64	3	401	419.98	R241	-39 410.26	3	404	622.37
L242	-41 053.27	3	401	343.92	R242	-39 455.71	3	404	559.51
L243	-41 040.62	3	401	250.06	R243	-39 785.03	3	403	991.09
L244	-41 039.27	3	401	187.84	R244	-40 442.57	3	402	887.73
L245	-41 038.60	3	401	156.73	R245	-40 618.98	3	402	643.74
L246	-41 186.65	3	400	440.57	R246	-40 638.68	3	402	616.50
L247	-41 209.26	3	400	331.20	R247	-40 727.89	3	402	511.96
L248	-41 213.26	3	400	311.85	R248	-40 920.46	3	402	307.78
L249	-41 279.57	3	400	157.29	R249	-40 961.75	3	402	263.10
L250	-42 037.22	3	398	924.67	R250	-41 017.33	3	402	200.32
L251	-42 192.87	3	398	658.48	R251	-41 221.69	3	401	969.48
L252	-42 389.78	3	398	186.96	R252	-41 251.21	3	401	936.13
L253	-42 726.72	3	397	380.10	R253	-41 297.27	3	401	748.60
L254	-42 816.24	3	397	165.74	R254	-41 263.10	3	401	601.55
L255	-42 827.63	3	397	138.47	R255	-41 113.61	3	401	387.65
					<div> <div>Vel</div> <div>Sheet</div> <div>20</div> <div>Van</div> <div>of</div> <div>22</div> </div> <div>P1011/17</div>				

PADRESERVE KOÖRDINATE / ROAD RESERVE CO-ORDINATES									
LINKERKANT/LEFT HAND SIDE					REGTERKANT/RIGHT HAND SIDE				
	Y		X	WG 29 ^a		Y		X	
L256	-42 874.70	3	397	025.77	R256	-41 092.04	3	401	334.59
L257	-42 985.49	3	396	819.58	R257	-41 076.39	3	401	242.40
L258	-43 089.81	3	396	675.76	R258	-41 082.28	3	401	162.12
L259	-43 218.76	3	396	532.92	R259	-41 221.46	3	400	466.29
L260	-43 320.49	3	396	448.24	R260	-41 248.32	3	400	331.98
L261	-43 442.34	3	396	361.37	R261	-41 304.75	3	400	195.07
L262	-43 755.52	3	396	174.00	R262	-42 069.07	3	398	942.22
L263	-43 888.68	3	396	094.33	R263	-42 225.39	3	398	677.90
L264	-44 047.44	3	395	915.91	R264	-42 422.19	3	398	210.03
L265	-44 120.96	3	395	734.24	R265	-42 761.44	3	397	403.52
L266	-44 123.21	3	395	728.68	R266	-42 850.72	3	397	191.27
L267	-44 127.44	3	395	693.21	R267	-42 871.52	3	397	141.81
L268	-44 186.09	3	395	200.84	R268	-42 912.52	3	397	044.35
L269	-44 252.62	3	395	085.11	R269	-43 024.69	3	396	833.98
L270	-44 294.77	3	395	030.43	R270	-43 207.94	3	396	602.16
L271	-44 346.40	3	394	990.05	R271	-43 333.63	3	396	488.79
L272	-44 408.00	3	394	959.34	R272	-43 473.62	3	396	387.10
L273	-44 455.97	3	394	938.94	R273	-43 787.38	3	396	194.57
L274	-44 529.50	3	394	923.76	R274	-43 930.90	3	396	106.51
L275	-44 740.36	3	394	913.17	R275	-44 089.56	3	395	936.56
L276	-44 866.79	3	394	879.12	R276	-44 128.97	3	395	817.28
L277	-44 942.74	3	394	821.83	R277	-44 165.62	3	395	711.90
L278	-45 015.13	3	394	752.71	R278	-44 168.67	3	395	691.00
L279	-45 173.42	3	394	408.31	R279	-44 172.42	3	395	665.42
L280	-45 194.20	3	394	280.19	R280	-44 241.34	3	395	194.30
L281	-45 197.24	3	393	873.61	R281	-44 260.23	3	395	134.95
L282	-45 226.68	3	393	774.17	R282	-44 292.09	3	395	097.97
L283	-45 260.27	3	393	716.43	R283	-44 345.19	3	395	036.48
L284	-45 519.02	3	393	365.56	R284	-44 415.67	3	394	997.11
L285	-45 532.93	3	393	327.22	R285	-44 476.86	3	394	974.38
L286	-45 539.13	3	393	288.28	R286	-44 546.22	3	394	962.27
L287	-45 531.36	3	393	209.38	R287	-44 767.59	3	394	953.22
L288	-45 519.82	3	393	172.11	R288	-44 846.04	3	394	930.22
L289	-45 409.92	3	393	009.48	R289	-44 915.36	3	394	893.18
L290	-45 391.55	3	392	956.82	R290	-44 983.57	3	394	837.21
L291	-45 342.53	3	392	690.19	R291	-45 050.11	3	394	763.77
L292	-45 309.68	3	392	631.83	R292	-45 098.56	3	394	669.89
L293	-45 249.80	3	392	581.13	R293	-45 223.02	3	394	370.83
L294	-45 100.59	3	392	522.31	R294	-45 230.69	3	394	317.72
L295	-45 056.42	3	392	492.71	R295	-45 234.41	3	393	867.54
L296	-45 023.24	3	392	460.26	R296	-45 263.71	3	393	774.71
L297	-44 966.47	3	392	377.67	R297	-45 317.95	3	393	698.84
L298	-44 949.56	3	392	276.57	R298	-45 547.31	3	393	411.51
L299	-44 942.74	3	391	943.94	R299	-45 581.53	3	393	320.16
L300	-44 955.41	3	391	830.78	R300	-45 585.10	3	393	280.17
L301	-44 977.20	3	391	766.31	R301	-45 577.23	3	393	223.59
L302	-45 025.80	3	391	683.93	R302	-45 558.37	3	393	173.85
L303	-45 087.36	3	391	625.01	R303	-45 490.68	3	393	061.92
L304	-45 161.44	3	391	566.05	R304	-45 424.75	3	392	951.24
L305	-45 238.71	3	391	535.76	R305	-45 387.19	3	392	721.75
L306	-45 354.63	3	391	519.76	R306	-45 356.33	3	392	637.16
					<div> <div>Vel Sheet</div> <div>21</div> <div>Van of</div> <div>22</div> </div> <div>P1011/17</div>				

PADRESERWE KOÖRDINATE / ROAD RESERVE CO-ORDINATES									
LINKERKANT/LEFT HAND SIDE					REGTERKANT/RIGHT HAND SIDE				
	Y		X	WG 29°		Y		X	
L307	-45 485.90	3	391	662.81	R307	-45 279.98	3	392	558.07
L308	-45 535.20	3	391	721.22	R308	-45 079.93	3	392	463.44
L309	-45 630.80	3	391	737.27	R309	-45 002.65	3	392	360.84
L310	-45 692.80	3	391	722.51	R310	-44 985.13	3	391	893.83
L311	-45 736.26	3	391	676.33	R311	-45 005.54	3	391	809.39
L312	-45 862.33	3	391	492.56	R312	-45 040.93	3	391	736.98
L313	-45 848.58	3	391	383.35	R313	-45 078.59	3	391	694.49
L314	-45 809.65	3	391	054.87	R314	-45 115.89	3	391	656.24
L315	-45 772.81	3	391	005.56	R315	-45 241.65	3	391	585.99
L316	-45 699.17	3	390	970.95	R316	-45 272.01	3	391	574.88
L317	-45 605.05	3	390	978.16	R317	-45 350.52	3	391	601.82
L318	-45 522.21	3	390	959.00	R318	-45 406.14	3	391	678.18
L319	-45 415.00	3	390	915.53	R319	-45 478.09	3	391	764.95
L320	-45 318.40	3	390	888.91	R320	-45 565.90	3	391	819.39
L321	-45 241.43	3	390	846.29	R321	-45 681.84	3	391	819.46
L322	-45 233.14	3	390	774.65	R322	-45 722.10	3	391	797.67
L323	-45 284.21	3	390	703.83	R323	-45 844.84	3	391	666.58
L324	-45 269.41	3	390	650.56	R324	-45 920.52	3	391	522.74
L325	-45 202.41	3	390	574.62	R325	-45 923.70	3	391	432.65
L326	-45 184.72	3	390	524.72	R326	-45 840.34	3	391	017.08
L327	-45 168.68	3	390	474.87	R327	-45 810.11	3	390	972.97
L328	-45 189.93	3	390	377.81	R328	-45 761.31	3	390	933.89
L329	-45 242.20	3	390	317.85	R329	-45 632.69	3	390	911.47
L330	-45 364.49	3	390	164.71	R330	-45 549.71	3	390	898.99
L331	-45 454.21	3	390	024.02	R331	-45 490.44	3	390	870.67
L332	-45 469.29	3	389	908.38	R332	-45 485.08	3	390	788.43
L333	-45 459.14	3	389	840.84	R333	-45 401.97	3	390	688.08
L334	-45 436.80	3	389	778.84	R334	-45 352.71	3	390	643.46
L335	-45 279.34	3	389	557.96	R335	-45 261.76	3	390	569.58
L336	-45 293.81	3	389	432.61	R336	-45 240.78	3	390	550.35
					R337	-45 213.39	3	390	509.61
					R338	-45 209.96	3	390	452.42
					R339	-45 226.08	3	390	416.33
					R340	-45 391.91	3	390	248.34
					R341	-45 462.18	3	390	132.23
					R342	-45 526.90	3	390	013.78
					R343	-45 527.55	3	389	929.60
					R344	-45 484.65	3	389	760.01
					R345	-45 360.63	3	389	568.57
					R346	-45 353.07	3	389	534.99
					R347	-45 361.94	3	389	420.69

Printed by and obtainable from the Government Printer, Bosman Street, Private Bag X85, Pretoria, 0001
Contact Centre Tel: 012-748 6200. eMail: info.egazette@gpw.gov.za
Publications: Tel: (012) 748 6053, 748 6061, 748 6065