



# Government Gazette Staatskoerant

REPUBLIC OF SOUTH AFRICA  
REPUBLIEK VAN SUID AFRIKA

Vol. 702

11

December  
Desember 2023

No. 49847



N.B. The Government Printing Works will not be held responsible for the quality of "Hard Copies" or "Electronic Files" submitted for publication purposes

ISSN 1682-5845



9 771682 584003

**AIDS HELPLINE: 0800-0123-22 Prevention is the cure**

**IMPORTANT NOTICE:**

**THE GOVERNMENT PRINTING WORKS WILL NOT BE HELD RESPONSIBLE FOR ANY ERRORS THAT MIGHT OCCUR DUE TO THE SUBMISSION OF INCOMPLETE / INCORRECT / ILLEGIBLE COPY.**

**No FUTURE QUERIES WILL BE HANDLED IN CONNECTION WITH THE ABOVE.**

**Contents**

<i>No.</i>	<i>Gazette No.</i>	<i>Page No.</i>
------------	------------------------	---------------------

**GOVERNMENT NOTICES • GOEWERMENTSKENNISGEWINGS****Transport, Department of/ Vervoer, Departement van**

4178	South African National Roads Agency Limited and the National Roads Act (7/1998): Repeal of Declaration No. 272 of 2018 and Re-declaration of National Road R62 Section 7: Joubertina to Kareedouw .....	49847	3
4178	Suid-Afrikaanse Nasionale Padagentskap Beperk en Nasionale Paaie Wet (7/1998): Intrekking van Verklaring No. 272 van 2018 en Herverklaring van Nasionale Pad R62 Seksie 7: Joubertina to Kareedouw .....	49847	4

---

**GOVERNMENT NOTICES • GOEWERMENTSKENNISGEWINGS**

---

**DEPARTMENT OF TRANSPORT**

NO. 4178

11 December 2023

**THE SOUTH AFRICAN NATIONAL ROADS  
AGENCY SOC LIMITED**Registration No: 1998/009584/30

---

**REPEAL OF DECLARATION No. 272 OF 2018 AND RE-DECLARATION OF NATIONAL ROAD R62  
SECTION 7: JOUBERTINA TO KAREEDOUW**

By virtue of section 40(1)(b) of the South African National Roads Agency Limited and the National Roads Act 1998 (Act No. 7 of 1998), I hereby repeal Declaration No. 272 of 2018, and by virtue of section 40(1)(a) of the said Act, I hereby declare the route, as indicated on the subjoining Plan P922/16, sheets 1 to 18, as a National Road.

In the town of Kareedouw the route enters the town along R62 Section 7 from the West and follows the street known as Riebeeck Street at the time of declaration.

**(National Road R62 Section 7: Joubertina – Kareedouw)**

  
**MINISTER OF TRANSPORT**

## DEPARTEMENT VAN VERVOER

NO. 4178

11 Desember 2023

**DIE SUID-AFRIKAANSE NASIONALE  
PADAGENTSKAP MSB BEPERK**

Registrasie No: 1998/009584/30

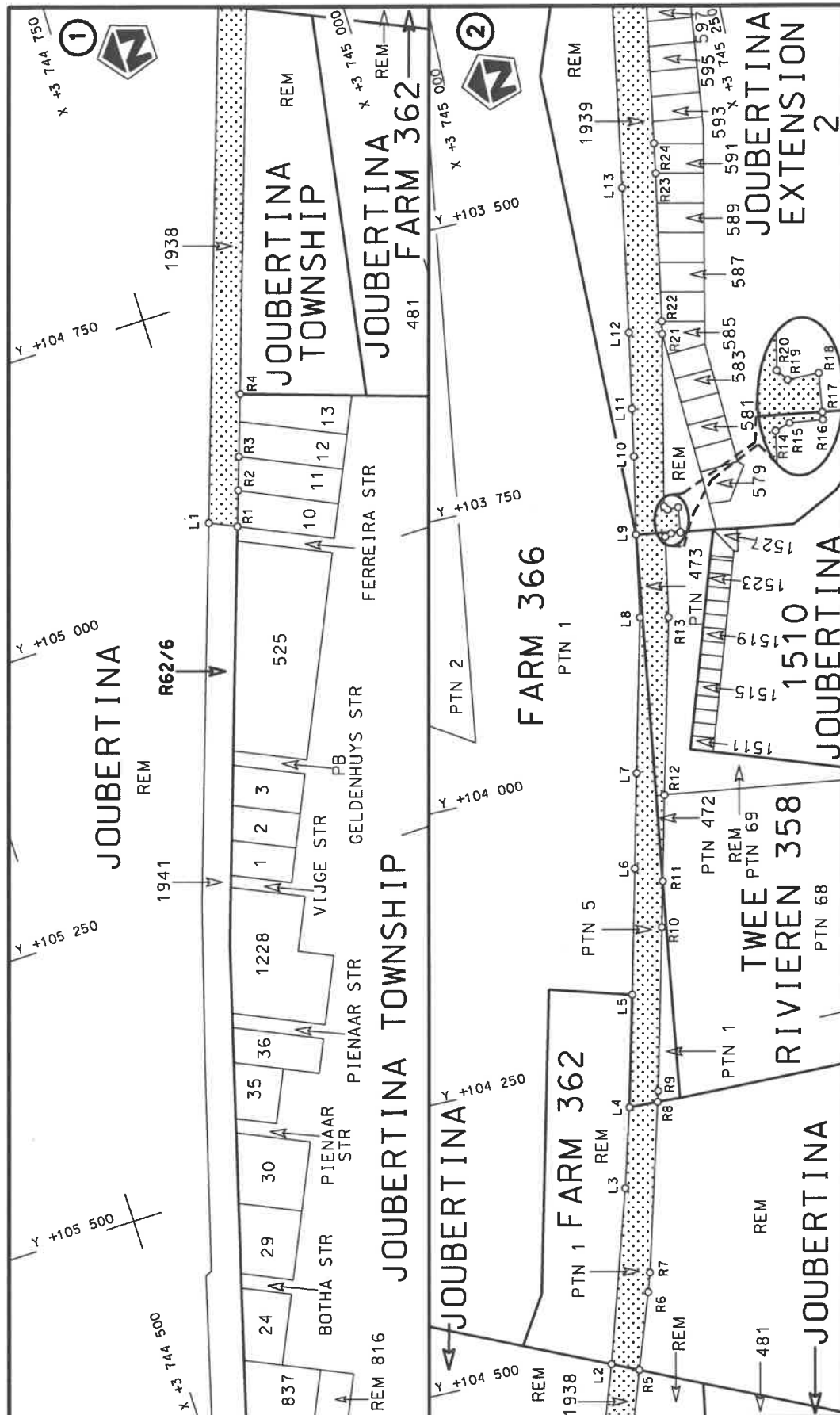
**INTREKKING VAN VERKLARING No. 272 VAN 2018 EN HERVERKLARING VAN NASIONALE PAD  
R62 SEKSIE 7: JOUBERTINA TOT KAREEDOUW**

Kragtens Artikel 40(1)(b) van die Suid-Afrikaanse Nasionale Padagentskap Beperk en Nasionale Paaie Wet 1998 (Wet No. 7 van 1998), trek ek hiermee Verklaring No. 272 van 2018 in, en kragtens Artikel 40(1)(a) van genoemde Wet verklaar ek hiermee die roete soos aangetoon op meegaande Plan P922/16, velle 1 tot 18, as 'n Nasionale Pad.

In die dorp van Kareedouw kom die pad die dorp binne vanuit die Weste langs die R62 Seksie 7 en volg die straat bekend as Riebeeckstraat tydens datum van verklaring.

**(Nasionale Pad R62 Seksie 7: Joubertina – Kareedouw)**

**MINISTER VAN VERVOER**



steldie podreserwe voor van 'n gedeelte  
represents the road reserve of a portion  
van Nasionale Roete R62 Seksie  
of National Route Section



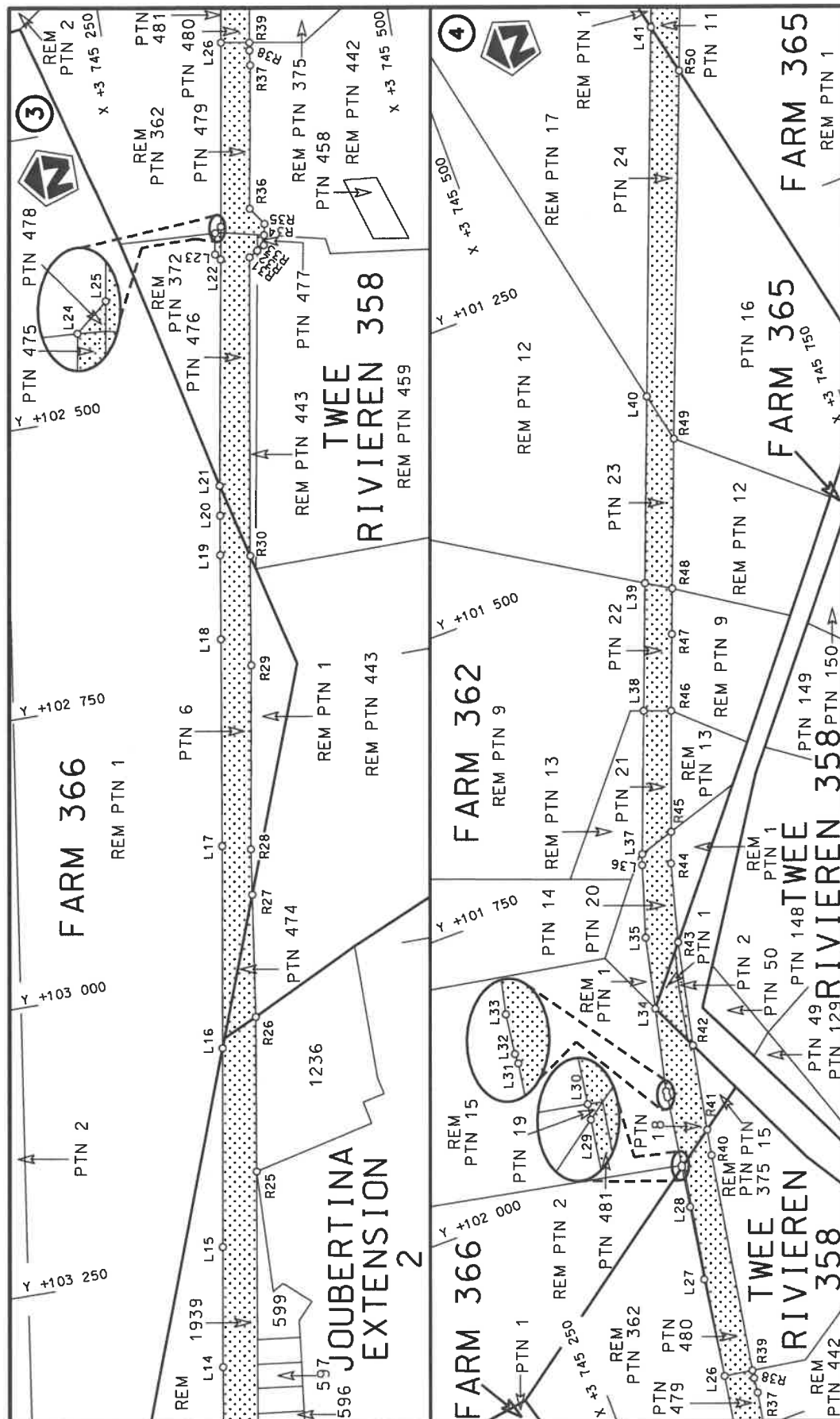
Die figuur getoon  
The figure shown

Die Suid Afrikaanse Nasionale Podagentskap MSB Bpk  
The South African National Roads Agency SOC Ltd

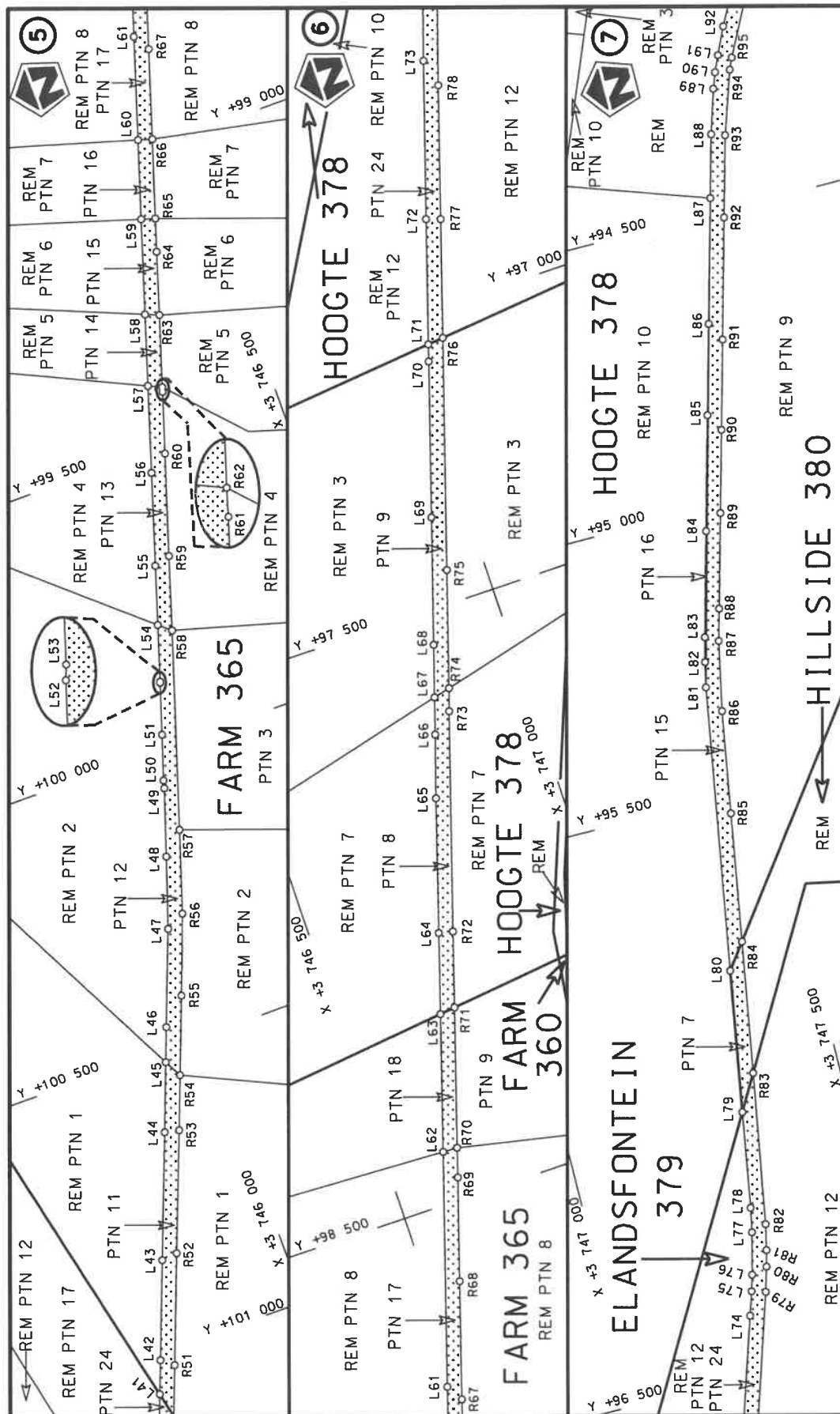
Vel  
Sheet 1 of 18

Plan  
P922/16

7  
Seksie  
Section

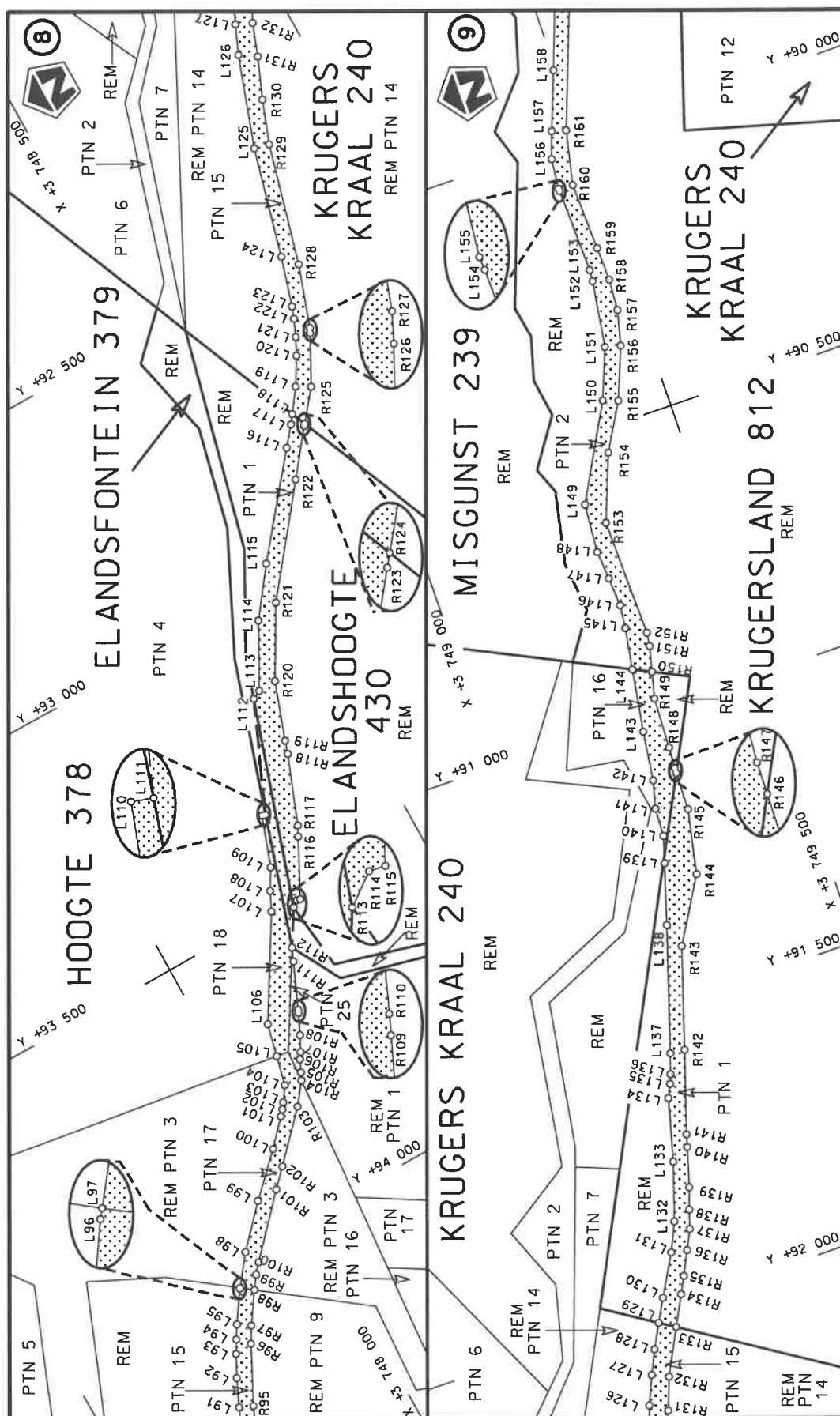


Die Suid Afrikaanse Nasionale Padagentskap MSB Bpk The South African National Roads Agency SOC Ltd	Die figuur getoon The figure shown	steldie padreserwe voor van 'n gedeelte represents the road reserve of a portion van Nasionale Roete R62 of National Route	Vel Sheet 2 of 18 Plan P922/16
---	---------------------------------------	---	---



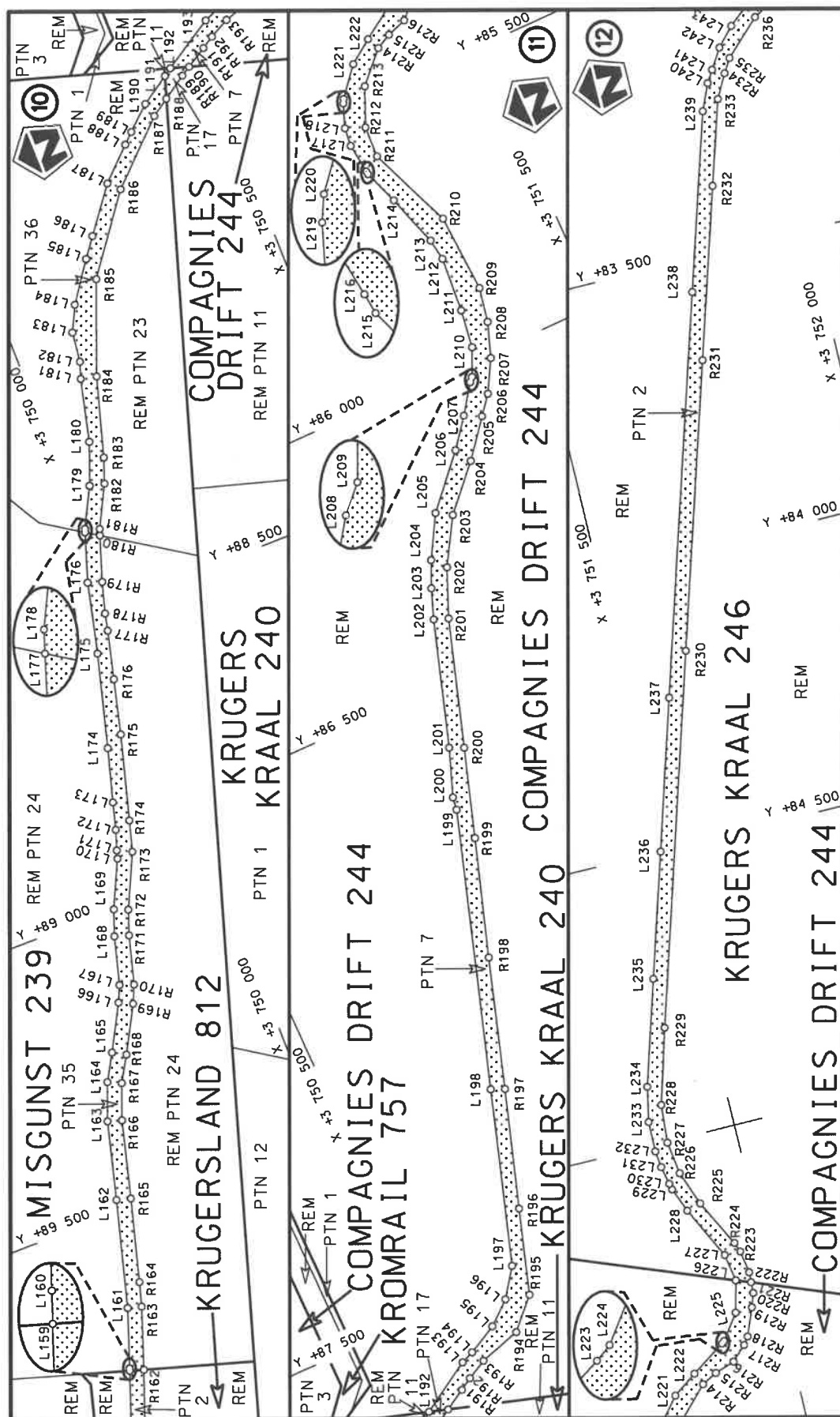
<p>Die Suid Afrikaanse Nasionale Padagentskap MSB Bpk The South African National Roads Agency SOC Ltd</p>	<p>Die figuur getoon The figure shown</p>	<p>steldie padreserwe voor van 'n gedeelte represents the road reserve of a portion van Nasionale Roete R62 Sektie of National Route of National Route</p>	<p>Vel Sheet</p>	<p>van 3 of</p>	<p>18</p>
<p>Plan</p>	<p>P922/16</p>	<p>7</p>	<p></p>	<p></p>	<p></p>




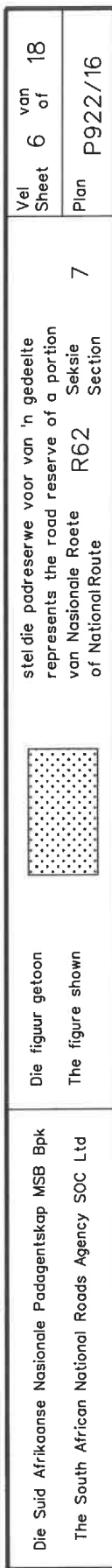


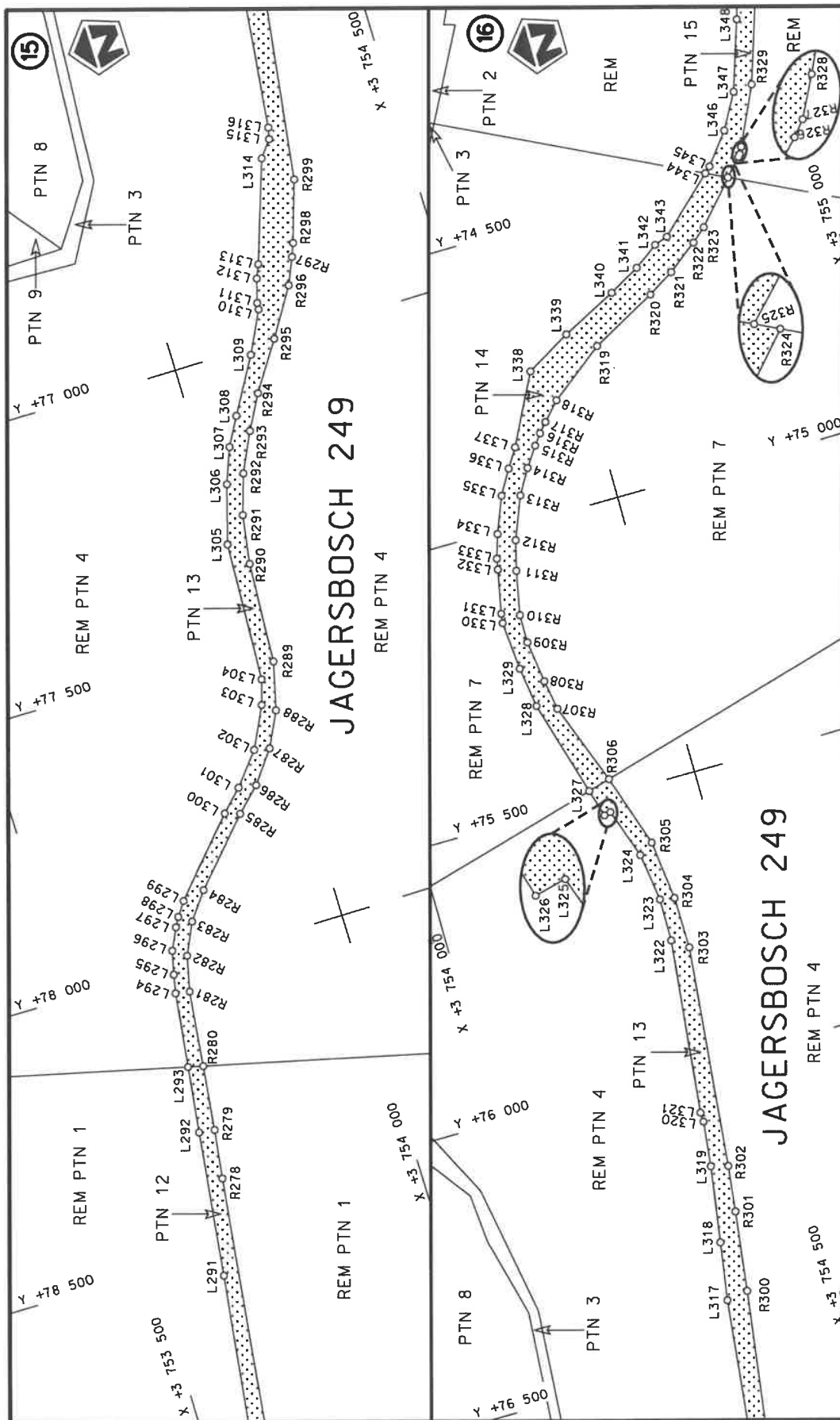
Die Suid Afrikaanse Nasionale Padagentskap MSB Bpk The South African National Roads Agency SOC Ltd	Die figuur getoon The figure shown	steldie padreserwe voor van 'n gedeelte represents the road reserve of a portion van Nasionale Roete R62 of National Route	Vel Sheet 4 of 18 Plan P922/16
---	---------------------------------------	---	---





Die Suid Afrikaanse Nasionale Padagentskap MSB Bpk	Die figuur getoon		steldie padreserwe voor van 'n gedeelte represents the road reserve of a portion	Vel Sheet 5 of 18
The South African National Roads Agency SOC Ltd	The figure shown		van Nasionale Roete R62 Sektie of National Route Section	Plan P922/16





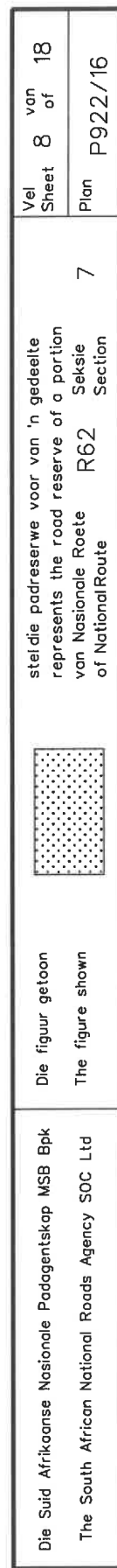
stelt die padreserwe voor van 'n gedeelte  
represents the road reserve of a portion  
van Nasionale Roete R62 Seksie  
of National Route of Section



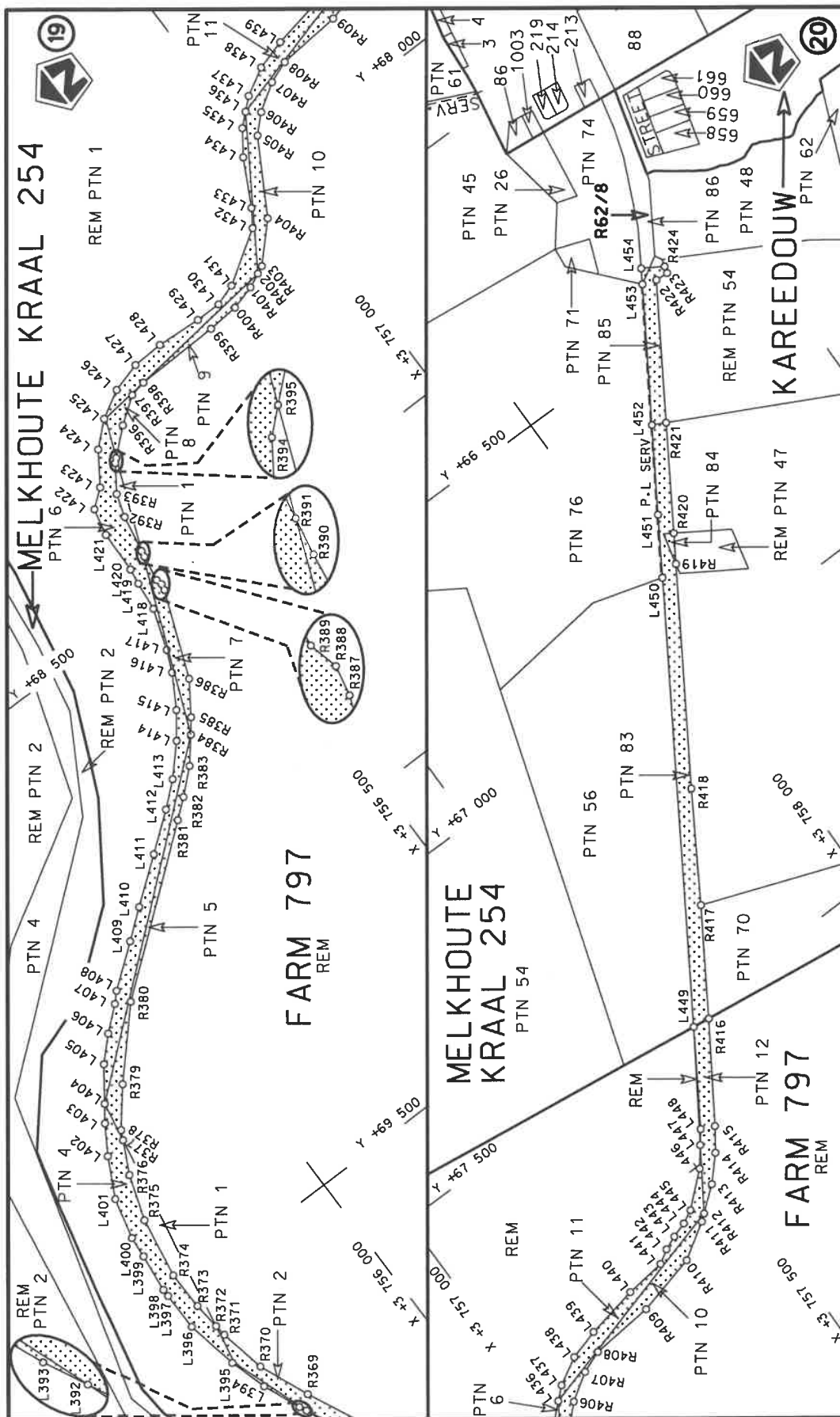
Die figuur getoon  
The figure shown

Die Suid Afrikaanse Nasionale Padagentskap MSB Bpk  
The South African National Roads Agency SOC Ltd

Vel  
Sheet 7 of 18  
Plan P922/16







stelt die podreserwe voor van 'n gedeelte  
represents the road reserve of a portion  
van Nasionale Roete R62 Seksie  
of National Route of National Route



Die figuur getoon  
The figure shown

Die Suid Afrikaanse Nasionale Podagentskap MSB Bpk  
The South African National Roads Agency SOC Ltd

Vel  
Sheet 9 of 18

Plan  
P922/16

PADRESERWE KOÖRDINATE / ROAD RESERVE CO-ORDINATES						
LINKERKANT/LEFT HAND SIDE				REGTERKANT/RIGHT HAND SIDE		
	Y	X	WG 25°		Y	X
L1	104 936.98	3 744 750.22		R1	104 947.80	3 744 773.10
L2	104 506.93	3 744 896.89		R2	104 917.85	3 744 783.41
L3	104 358.73	3 744 942.67		R3	104 889.79	3 744 793.08
L4	104 290.26	3 744 961.87		R4	104 837.79	3 744 810.98
L5	104 194.13	3 744 985.98		R5	104 517.34	3 744 919.67
L6	104 086.68	3 745 012.49		R6	104 452.21	3 744 942.31
L7	104 005.18	3 745 032.40		R7	104 435.94	3 744 947.53
L8	103 872.48	3 745 065.13		R8	104 290.96	3 744 987.10
L9	103 800.80	3 745 077.65		R9	104 281.68	3 744 989.63
L10	103 733.40	3 745 090.76		R10	104 142.06	3 745 024.36
L11	103 692.20	3 745 098.29		R11	104 102.91	3 745 033.99
L12	103 626.46	3 745 110.27		R12	104 029.26	3 745 052.10
L13	103 501.31	3 745 131.94		R13	103 877.81	3 745 089.75
L14	103 340.23	3 745 158.72		R14	103 808.33	3 745 102.34
L15	103 236.33	3 745 176.25		R15	103 806.64	3 745 107.98
L16	103 064.50	3 745 205.46		R16	103 807.63	3 745 116.03
L17	102 889.82	3 745 235.09		R17	103 806.89	3 745 116.13
L18	102 710.97	3 745 264.55		R18	103 785.52	3 745 118.96
L19	102 638.16	3 745 276.38		R19	103 785.44	3 745 109.61
L20	102 604.22	3 745 282.16		R20	103 782.06	3 745 107.09
L21	102 578.32	3 745 286.10		R21	103 634.01	3 745 138.63
L22	102 383.24	3 745 320.19		R22	103 623.16	3 745 140.59
L23	102 378.00	3 745 316.14		R23	103 495.22	3 745 163.59
L24	102 359.62	3 745 319.33		R24	103 469.26	3 745 167.90
L25	102 354.84	3 745 325.13		R25	103 176.08	3 745 216.52
L26	102 196.07	3 745 352.00		R26	103 042.36	3 745 238.70
L27	102 110.45	3 745 365.15		R27	102 936.18	3 745 253.80
L28	102 046.55	3 745 376.03		R28	102 896.78	3 745 259.41
L29	102 011.43	3 745 381.58		R29	102 737.98	3 745 286.91
L30	102 009.73	3 745 381.85		R30	102 643.37	3 745 302.16
L31	101 949.74	3 745 391.33		R31	102 385.58	3 745 345.42
L32	101 948.65	3 745 391.33		R32	102 381.03	3 745 353.06
L33	101 944.23	3 745 391.93		R33	102 377.28	3 745 359.35
L34	101 873.00	3 745 408.61		R34	102 368.61	3 745 361.09
L35	101 811.83	3 745 422.58		R35	102 358.95	3 745 363.03
L36	101 751.23	3 745 442.17		R36	102 343.65	3 745 352.68
L37	101 742.25	3 745 445.63		R37	102 219.90	3 745 373.98
L38	101 625.00	3 745 490.86		R38	102 206.98	3 745 375.39
L39	101 520.67	3 745 531.04		R39	102 200.23	3 745 376.52
L40	101 368.09	3 745 589.79		R40	102 010.63	3 745 409.49
L41	101 066.62	3 745 705.90		R41	101 988.36	3 745 413.81
L42	101 010.49	3 745 727.52		R42	101 914.68	3 745 428.08
L43	100 845.93	3 745 790.59		R43	101 825.58	3 745 447.74
L44	100 635.60	3 745 871.43		R44	101 758.72	3 745 466.18
L45	100 520.11	3 745 915.29		R45	101 732.80	3 745 476.00
L46	100 462.59	3 745 937.13		R46	101 633.42	3 745 513.16
L47	100 301.12	3 745 998.97		R47	101 570.79	3 745 537.36
L48	100 180.14	3 746 039.43		R48	101 533.53	3 745 551.59
L49	100 065.95	3 746 077.06		R49	101 411.12	3 745 598.87
L50	100 052.64	3 746 080.50		R50	101 110.80	3 745 715.73
L51	99 976.05	3 746 105.52		R51	101 027.10	3 745 747.86
				Vel Sheet 10	Van of 18	P922/16



PADRESERWE KOÖRDINATE / ROAD RESERVE CO-ORDINATES									
LINKERKANT/LEFT HAND SIDE					REGTERKANT/RIGHT HAND SIDE				
	Y	X	WG 25°			Y	X		
L52	99 889.09	3 746 133.23		R52	100 843.05	3 745 818.37			
L53	99 887.03	3 746 134.04		R53	100 640.94	3 745 896.38			
L54	99 791.84	3 746 164.09		R54	100 550.23	3 745 930.74			
L55	99 692.52	3 746 195.45		R55	100 419.50	3 745 981.01			
L56	99 536.62	3 746 244.99		R56	100 284.40	3 746 031.81			
L57	99 390.76	3 746 291.07		R57	100 143.85	3 746 077.23			
L58	99 270.74	3 746 329.05		R58	99 809.62	3 746 184.42			
L59	99 110.97	3 746 379.62		R59	99 684.64	3 746 223.91			
L60	98 978.24	3 746 421.62		R60	99 512.81	3 746 278.62			
L61	98 804.95	3 746 476.18		R61	99 409.31	3 746 311.45			
L62	98 410.42	3 746 601.36		R62	99 401.48	3 746 313.78			
L63	98 178.91	3 746 674.30		R63	99 280.33	3 746 352.13			
L64	98 042.75	3 746 717.22		R64	99 174.12	3 746 385.27			
L65	97 816.62	3 746 788.35		R65	99 118.29	3 746 403.00			
L66	97 709.87	3 746 822.84		R66	98 985.36	3 746 445.49			
L67	97 647.44	3 746 842.70		R67	98 834.17	3 746 493.06			
L68	97 559.36	3 746 870.72		R68	98 635.65	3 746 555.98			
L69	97 345.56	3 746 938.47		R69	98 461.43	3 746 611.43			
L70	97 084.31	3 747 021.15		R70	98 411.49	3 746 626.72			
L71	97 055.48	3 747 030.24		R71	98 175.85	3 746 701.25			
L72	96 845.57	3 747 096.41		R72	98 048.32	3 746 741.53			
L73	96 579.98	3 747 180.42		R73	97 678.76	3 746 859.05			
L74	96 397.00	3 747 239.31		R74	97 640.15	3 746 871.71			
L75	96 356.08	3 747 252.26		R75	97 442.17	3 746 934.52			
L76	96 328.08	3 747 260.41		R76	97 052.72	3 747 057.73			
L77	96 255.37	3 747 278.69		R77	96 853.68	3 747 120.51			
L78	96 212.97	3 747 286.90		R78	96 629.23	3 747 191.12			
L79	96 045.94	3 747 314.29		R79	96 363.24	3 747 276.40			
L80	95 799.32	3 747 354.92		R80	96 320.44	3 747 288.84			
L81	95 305.19	3 747 436.32		R81	96 292.14	3 747 295.92			
L82	95 261.53	3 747 445.77		R82	96 247.57	3 747 305.73			
L83	95 219.25	3 747 456.33		R83	95 984.05	3 747 349.73			
L84	95 038.82	3 747 504.19		R84	95 754.94	3 747 387.75			
L85	94 841.83	3 747 556.50		R85	95 531.09	3 747 424.50			
L86	94 686.68	3 747 597.94		R86	95 352.66	3 747 453.64			
L87	94 472.87	3 747 654.82		R87	95 231.45	3 747 478.18			
L88	94 364.39	3 747 683.85		R88	95 176.63	3 747 492.90			
L89	94 287.86	3 747 706.82		R89	95 014.10	3 747 536.40			
L90	94 260.35	3 747 716.78		R90	94 872.92	3 747 574.33			
L91	94 232.68	3 747 729.01		R91	94 719.54	3 747 615.17			
L92	94 185.74	3 747 750.46		R92	94 512.03	3 747 670.21			
L93	94 148.01	3 747 770.40		R93	94 372.36	3 747 707.33			
L94	94 125.90	3 747 783.31		R94	94 262.81	3 747 743.33			
L95	94 103.24	3 747 797.13		R95	94 242.82	3 747 752.12			
L96	94 050.84	3 747 832.41		R96	94 144.86	3 747 801.88			
L97	94 049.84	3 747 833.19		R97	94 117.49	3 747 817.95			
L98	93 999.41	3 747 872.34		R98	94 065.19	3 747 853.43			
L99	93 931.19	3 747 935.47		R99	94 043.33	3 747 869.33			
L100	93 864.60	3 748 003.23		R100	94 026.23	3 747 883.70			
L101	93 820.84	3 748 043.13		R101	93 929.38	3 747 973.25			
L102	93 811.39	3 748 051.43		R102	93 898.94	3 748 002.57			
					<div> <div>Vel Sheet 11</div> <div>Van of 18</div> <div>P922/16</div> </div>				

PADRESERWE KOÖRDINATE / ROAD RESERVE CO-ORDINATES					
LINKERKANT/LEFT HAND SIDE			REGTERKANT/RIGHT HAND SIDE		
	Y	X	WG 25°	Y	X
L103	93 801.25	3 748 058.79		R103	93 820.14 3 748 076.89
L104	93 776.41	3 748 076.15		R104	93 783.19 3 748 105.45
L105	93 724.57	3 748 088.69		R105	93 770.27 3 748 111.73
L106	93 667.93	3 748 102.50		R106	93 749.56 3 748 121.22
L107	93 498.10	3 748 205.08		R107	93 738.72 3 748 128.44
L108	93 464.97	3 748 220.99		R108	93 712.34 3 748 142.38
L109	93 429.27	3 748 241.96		R109	93 677.05 3 748 158.79
L110	93 342.19	3 748 273.37		R110	93 671.55 3 748 161.33
L111	93 344.41	3 748 279.45		R111	93 593.21 3 748 195.64
L112	93 155.93	3 748 361.15		R112	93 570.80 3 748 205.46
L113	93 148.26	3 748 376.15		R113	93 510.48 3 748 242.20
L114	93 039.51	3 748 435.57		R114	93 502.26 3 748 253.62
L115	92 958.76	3 748 496.31		R115	93 503.44 3 748 259.56
L116	92 798.40	3 748 626.75		R116	93 405.54 3 748 310.28
L117	92 766.02	3 748 653.17		R117	93 388.28 3 748 319.22
L118	92 751.16	3 748 664.03		R118	93 269.43 3 748 365.36
L119	92 711.62	3 748 692.94		R119	93 246.83 3 748 372.80
L120	92 664.96	3 748 720.68		R120	93 146.69 3 748 408.86
L121	92 635.74	3 748 735.40		R121	93 026.82 3 748 477.65
L122	92 606.15	3 748 748.32		R122	92 854.62 3 748 613.24
L123	92 585.75	3 748 755.91		R123	92 779.91 3 748 671.98
L124	92 500.13	3 748 782.43		R124	92 776.64 3 748 674.62
L125	92 310.55	3 748 834.24		R125	92 725.21 3 748 716.14
L126	92 153.31	3 748 889.83		R126	92 641.93 3 748 760.65
L127	92 103.90	3 748 911.27		R127	92 633.74 3 748 764.65
L128	92 062.60	3 748 930.87		R128	92 526.76 3 748 802.27
L129	92 020.78	3 748 952.84		R129	92 317.10 3 748 860.23
L130	91 981.58	3 748 974.31		R130	92 242.40 3 748 888.30
L131	91 910.72	3 749 014.01		R131	92 172.43 3 748 918.05
L132	91 860.73	3 749 037.01		R132	92 116.50 3 748 938.99
L133	91 760.37	3 749 069.37		R133	92 037.79 3 748 979.16
L134	91 651.78	3 749 097.98		R134	91 986.11 3 749 006.18
L135	91 629.22	3 749 108.83		R135	91 957.02 3 749 021.24
L136	91 613.36	3 749 115.20		R136	91 915.92 3 749 041.50
L137	91 578.45	3 749 126.90		R137	91 882.02 3 749 057.96
L138	91 362.72	3 749 194.85		R138	91 849.59 3 749 068.32
L139	91 258.64	3 749 226.88		R139	91 812.62 3 749 081.15
L140	91 212.51	3 749 240.59		R140	91 744.30 3 749 100.83
L141	91 162.59	3 749 243.06		R141	91 722.77 3 749 106.90
L142	91 114.21	3 749 255.37		R142	91 580.70 3 749 152.48
L143	91 027.46	3 749 266.97		R143	91 406.37 3 749 207.21
L144	90 917.66	3 749 284.86		R144	91 294.80 3 749 273.39
L145	90 844.83	3 749 296.73		R145	91 181.92 3 749 296.36
L146	90 803.83	3 749 301.13		R146	91 115.11 3 749 297.67
L147	90 752.51	3 749 297.64		R147	91 105.84 3 749 297.85
L148	90 702.12	3 749 293.58		R148	91 068.40 3 749 300.45
L149	90 615.93	3 749 300.38		R149	90 978.69 3 749 304.30
L150	90 452.75	3 749 389.23		R150	90 932.69 3 749 315.64
L151	90 365.09	3 749 423.59		R151	90 888.37 3 749 326.56
L152	90 248.62	3 749 440.80		R152	90 864.68 3 749 329.64
L153	90 228.30	3 749 442.11		R153	90 658.25 3 749 324.74
			Vel Sheet 12 Van of 18 P922/16		

PADRESERWE KOÖRDINATE / ROAD RESERVE CO-ORDINATES									
LINKERKANT/LEFT HAND SIDE					REGTERKANT/RIGHT HAND SIDE				
	Y		X	WG 25°		Y		X	
L154	90 079.49	3	749	437.47	R154	90 542.84	3	749	368.85
L155	90 075.60	3	749	437.22	R155	90 462.19	3	749	415.22
L156	90 022.09	3	749	442.37	R156	90 371.91	3	749	450.72
L157	89 975.40	3	749	458.52	R157	90 310.77	3	749	465.58
L158	89 875.13	3	749	496.00	R158	90 255.45	3	749	469.38
L159	89 768.38	3	749	534.93	R159	90 196.07	3	749	467.04
L160	89 763.98	3	749	536.53	R160	90 077.29	3	749	462.61
L161	89 663.91	3	749	571.95	R161	89 982.38	3	749	482.79
L162	89 479.45	3	749	623.06	R162	89 775.87	3	749	559.09
L163	89 344.36	3	749	658.89	R163	89 670.67	3	749	596.08
L164	89 279.96	3	749	683.67	R164	89 628.91	3	749	608.02
L165	89 234.45	3	749	710.29	R165	89 485.99	3	749	647.39
L166	89 156.59	3	749	753.08	R166	89 352.09	3	749	682.90
L167	89 128.40	3	749	765.73	R167	89 290.88	3	749	706.46
L168	89 045.12	3	749	788.75	R168	89 246.83	3	749	732.22
L169	89 000.42	3	749	805.01	R169	89 167.80	3	749	775.65
L170	88 919.56	3	749	843.38	R170	89 136.90	3	749	789.52
L171	88 905.64	3	749	847.77	R171	89 052.76	3	749	812.77
L172	88 871.15	3	749	859.14	R172	89 010.10	3	749	828.29
L173	88 824.57	3	749	872.04	R173	88 917.78	3	749	872.10
L174	88 732.15	3	749	898.29	R174	88 864.56	3	749	887.08
L175	88 570.50	3	749	942.08	R175	88 718.02	3	749	928.31
L176	88 448.02	3	749	971.91	R176	88 623.15	3	749	952.58
L177	88 364.26	3	750	000.09	R177	88 539.53	3	749	973.48
L178	88 357.80	3	750	002.26	R178	88 509.57	3	749	980.22
L179	88 290.17	3	750	036.94	R179	88 456.08	3	749	995.77
L180	88 218.16	3	750	064.77	R180	88 378.51	3	750	021.87
L181	88 109.64	3	750	091.20	R181	88 367.57	3	750	025.55
L182	88 080.89	3	750	100.80	R182	88 296.23	3	750	062.40
L183	88 028.16	3	750	107.06	R183	88 253.08	3	750	078.12
L184	87 984.21	3	750	128.81	R184	88 115.52	3	750	117.98
L185	87 916.33	3	750	176.50	R185	87 955.95	3	750	179.47
L186	87 882.82	3	750	200.96	R186	87 823.96	3	750	276.20
L187	87 805.96	3	750	258.61	R187	87 725.67	3	750	377.92
L188	87 753.67	3	750	312.31	R188	87 704.89	3	750	409.03
L189	87 736.69	3	750	330.07	R189	87 677.47	3	750	450.16
L190	87 700.01	3	750	371.03	R190	87 667.39	3	750	466.79
L191	87 666.73	3	750	420.91	R191	87 645.79	3	750	502.45
L192	87 657.61	3	750	434.59	R192	87 632.77	3	750	523.62
L193	87 601.94	3	750	523.70	R193	87 614.27	3	750	557.77
L194	87 592.74	3	750	545.96	R194	87 591.98	3	750	630.67
L195	87 565.47	3	750	597.00	R195	87 541.50	3	750	678.65
L196	87 531.31	3	750	637.01	R196	87 395.46	3	750	724.37
L197	87 482.37	3	750	671.74	R197	87 192.89	3	750	788.49
L198	87 183.33	3	750	765.79	R198	86 970.05	3	750	857.67
L199	86 709.54	3	750	913.54	R199	86 768.15	3	750	921.99
L200	86 687.11	3	750	916.58	R200	86 615.41	3	750	970.38
L201	86 604.57	3	750	946.54	R201	86 396.59	3	751	038.92
L202	86 387.70	3	751	014.65	R202	86 313.46	3	751	073.43
L203	86 335.98	3	751	033.34	R203	86 233.52	3	751	120.37
L204	86 290.49	3	751	053.35	R204	86 159.74	3	751	187.81
					<div> <div>Vel Sheet 13</div> <div>Van of 18</div> <div>P922/16</div> </div>				

PADRESERWE KOÖRDINATE / ROAD RESERVE CO-ORDINATES									
LINKERKANT/LEFT HAND SIDE					REGTERKANT/RIGHT HAND SIDE				
	Y		X	WG 25 <sup>a</sup>		Y		X	
L205	86 218.00	3	751 094.34		R205	86 096.03	3	751 237.70	
L206	86 131.56	3	751 171.43		R206	86 064.12	3	751 263.27	
L207	86 082.10	3	751 209.43		R207	86 008.76	3	751 293.68	
L208	86 032.89	3	751 243.33		R208	85 948.41	3	751 314.69	
L209	86 025.70	3	751 250.11		R209	85 888.19	3	751 325.91	
L210	85 978.27	3	751 271.76		R210	85 750.74	3	751 318.05	
L211	85 911.27	3	751 280.87		R211	85 603.32	3	751 257.75	
L212	85 814.93	3	751 288.25		R212	85 548.45	3	751 259.91	
L213	85 777.10	3	751 282.55		R213	85 481.82	3	751 288.32	
L214	85 686.10	3	751 252.91		R214	85 430.24	3	751 337.49	
L215	85 625.75	3	751 230.48		R215	85 416.53	3	751 363.96	
L216	85 619.62	3	751 229.75		R216	85 404.58	3	751 398.65	
L217	85 567.29	3	751 222.95		R217	85 380.66	3	751 423.59	
L218	85 534.84	3	751 226.41		R218	85 367.59	3	751 433.30	
L219	85 493.90	3	751 241.68		R219	85 319.55	3	751 452.78	
L220	85 486.80	3	751 245.41		R220	85 295.47	3	751 461.20	
L221	85 438.01	3	751 285.65		R221	85 276.28	3	751 462.06	
L222	85 408.56	3	751 327.38		R222	85 258.37	3	751 462.87	
L223	85 368.82	3	751 386.73		R223	85 219.04	3	751 456.38	
L224	85 365.37	3	751 391.23		R224	85 201.72	3	751 450.08	
L225	85 321.53	3	751 422.93		R225	85 119.51	3	751 408.62	
L226	85 266.37	3	751 436.74		R226	85 059.30	3	751 386.40	
L227	85 218.36	3	751 428.63		R227	85 001.67	3	751 378.14	
L228	85 126.39	3	751 383.57		R228	84 934.63	3	751 383.70	
L229	85 083.86	3	751 366.67		R229	84 803.80	3	751 421.50	
L230	85 073.03	3	751 364.05		R230	84 167.97	3	751 615.83	
L231	85 040.89	3	751 357.44		R231	83 678.54	3	751 766.04	
L232	85 011.51	3	751 353.93		R232	83 384.64	3	751 855.73	
L233	84 958.32	3	751 354.69		R233	83 238.62	3	751 900.84	
L234	84 897.50	3	751 367.18		R234	83 197.45	3	751 923.08	
L235	84 715.15	3	751 422.75		R235	83 173.39	3	751 937.85	
L236	84 500.69	3	751 488.52		R236	83 114.48	3	751 998.25	
L237	84 241.11	3	751 567.63		R237	83 077.32	3	752 066.81	
L238	83 557.56	3	751 776.95		R238	83 044.80	3	752 170.07	
L239	83 253.15	3	751 869.96		R239	83 025.05	3	752 224.53	
L240	83 207.01	3	751 889.87		R240	83 011.71	3	752 246.07	
L241	83 186.02	3	751 902.90		R241	82 992.62	3	752 264.48	
L242	83 151.34	3	751 924.80		R242	82 958.56	3	752 290.41	
L243	83 119.45	3	751 954.15		R243	82 897.03	3	752 317.14	
L244	83 098.93	3	751 978.94		R244	82 651.11	3	752 320.94	
L245	83 077.09	3	752 011.57		R245	82 451.31	3	752 327.40	
L246	83 074.81	3	752 015.41		R246	82 438.03	3	752 330.17	
L247	83 052.72	3	752 061.36		R247	82 366.31	3	752 342.91	
L248	83 018.08	3	752 165.22		R248	82 215.65	3	752 389.01	
L249	82 989.81	3	752 220.91		R249	82 214.70	3	752 392.67	
L250	82 974.55	3	752 241.02		R250	81 540.26	3	752 667.63	
L251	82 963.95	3	752 254.10		R251	81 537.90	3	752 665.45	
L252	82 962.93	3	752 254.97		R252	81 430.72	3	752 709.48	
L253	82 939.44	3	752 271.00		R253	81 324.18	3	752 759.89	
L254	82 907.99	3	752 284.49		R254	81 011.95	3	752 888.73	
L255	82 873.73	3	752 290.80		R255	80 869.56	3	752 949.71	
					<div> <div>Vel</div> <div>Sheet</div> </div> <div>14</div> <div> <div>Van</div> <div>of</div> </div> <div>18</div> <div>P922/16</div>				



PADRESERWE KOÖRDINATE / ROAD RESERVE CO-ORDINATES									
LINKERKANT/LEFT HAND SIDE					REGTERKANT/RIGHT HAND SIDE				
	Y		X	WG 25 <sup>a</sup>		Y		X	
L256	82 485.59	3	752 298.84		R256	80 680.79	3	753 045.72	
L257	82 382.02	3	752 313.45		R257	80 674.35	3	753 048.78	
L258	82 307.47	3	752 331.33		R258	80 610.44	3	753 079.14	
L259	82 206.46	3	752 366.19		R259	80 495.51	3	753 123.38	
L260	82 149.88	3	752 373.59		R260	80 291.18	3	753 194.10	
L261	82 129.01	3	752 397.90		R261	80 225.17	3	753 216.77	
L262	81 826.48	3	752 521.54		R262	80 167.59	3	753 234.38	
L263	81 590.20	3	752 619.34		R263	80 146.76	3	753 240.14	
L264	81 497.72	3	752 656.78		R264	80 111.51	3	753 251.94	
L265	81 478.46	3	752 663.64		R265	80 093.52	3	753 258.64	
L266	81 383.11	3	752 701.49		R266	80 073.82	3	753 265.39	
L267	81 262.81	3	752 750.78		R267	80 043.69	3	753 277.93	
L268	81 145.75	3	752 802.83		R268	79 972.28	3	753 312.73	
L269	81 079.43	3	752 830.45		R269	79 868.45	3	753 367.73	
L270	81 014.39	3	752 851.11		R270	79 738.51	3	753 435.14	
L271	80 898.61	3	752 908.07		R271	79 647.62	3	753 462.03	
L272	80 822.83	3	752 943.87		R272	79 503.35	3	753 503.83	
L273	80 809.02	3	752 951.28		R273	79 450.27	3	753 514.28	
L274	80 673.03	3	753 021.53		R274	79 273.83	3	753 547.57	
L275	80 666.85	3	753 024.46		R275	79 102.04	3	753 573.52	
L276	80 601.16	3	753 055.56		R276	79 027.36	3	753 582.94	
L277	80 487.22	3	753 099.82		R277	78 834.02	3	753 607.92	
L278	80 332.87	3	753 152.94		R278	78 381.08	3	753 664.92	
L279	80 257.59	3	753 178.99		R279	78 295.39	3	753 676.87	
L280	80 147.93	3	753 213.84		R280	78 182.57	3	753 690.26	
L281	80 127.14	3	753 218.67		R281	78 050.17	3	753 705.61	
L282	80 086.22	3	753 231.78		R282	77 988.73	3	753 719.52	
L283	80 044.52	3	753 247.59		R283	77 933.87	3	753 745.78	
L284	79 904.77	3	753 309.42		R284	77 886.96	3	753 781.22	
L285	79 744.20	3	753 395.47		R285	77 777.98	3	753 881.60	
L286	79 632.37	3	753 440.44		R286	77 738.21	3	753 923.01	
L287	79 338.81	3	753 495.40		R287	77 683.41	3	753 964.48	
L288	79 236.28	3	753 518.78		R288	77 622.85	3	753 994.64	
L289	79 086.51	3	753 545.77		R289	77 539.71	3	754 015.41	
L290	78 822.39	3	753 580.90		R290	77 363.65	3	754 025.57	
L291	78 545.19	3	753 617.57		R291	77 278.30	3	754 039.06	
L292	78 291.74	3	753 649.36		R292	77 208.41	3	754 061.24	
L293	78 176.08	3	753 664.05		R293	77 140.64	3	754 093.90	
L294	78 045.83	3	753 680.59		R294	77 081.51	3	754 126.49	
L295	78 013.59	3	753 687.19		R295	76 998.61	3	754 181.73	
L296	77 972.79	3	753 696.97		R296	76 916.42	3	754 233.17	
L297	77 935.08	3	753 715.14		R297	76 870.52	3	754 253.26	
L298	77 918.89	3	753 724.43		R298	76 847.69	3	754 262.17	
L299	77 894.82	3	753 741.68		R299	76 741.83	3	754 296.40	
L300	77 769.39	3	753 855.91		R300	76 403.71	3	754 342.53	
L301	77 733.43	3	753 892.39		R301	76 263.63	3	754 360.63	
L302	77 677.88	3	753 937.87		R302	76 183.37	3	754 370.17	
L303	77 606.49	3	753 973.32		R303	75 795.24	3	754 408.19	
L304	77 563.42	3	753 986.35		R304	75 704.69	3	754 406.69	
L305	77 319.73	3	753 998.37		R305	75 600.26	3	754 394.38	
L306	77 218.41	3	754 028.16		R306	75 472.45	3	754 351.97	
Vel Sheet 15					Van of 18		P922/16		

PADRESERWE KOÖRDINATE / ROAD RESERVE CO-ORDINATES									
LINKERKANT/LEFT HAND SIDE					REGTERKANT/RIGHT HAND SIDE				
	Y		X	WG 25°		Y		X	
L307	77 157.37	3	754 051.74		R307	75 329.02	3	754 298.37	
L308	77 108.35	3	754 078.91		R308	75 276.13	3	754 289.16	
L309	77 013.66	3	754 134.14		R309	75 202.45	3	754 279.12	
L310	76 941.24	3	754 170.34		R310	75 153.12	3	754 279.23	
L311	76 929.90	3	754 171.32		R311	75 076.36	3	754 294.19	
L312	76 888.71	3	754 183.07		R312	75 024.50	3	754 307.37	
L313	76 865.54	3	754 192.89		R313	74 951.00	3	754 336.60	
L314	76 689.61	3	754 252.65		R314	74 907.85	3	754 361.84	
L315	76 661.20	3	754 274.96		R315	74 874.02	3	754 385.25	
L316	76 641.56	3	754 279.45		R316	74 855.46	3	754 399.27	
L317	76 409.91	3	754 305.01		R317	74 838.75	3	754 413.57	
L318	76 308.58	3	754 320.73		R318	74 807.48	3	754 442.65	
L319	76 175.35	3	754 340.82		R319	74 735.30	3	754 536.73	
L320	76 096.38	3	754 349.38		R320	74 674.00	3	754 651.24	
L321	76 079.94	3	754 348.73		R321	74 646.02	3	754 696.93	
L322	75 774.88	3	754 381.01		R322	74 606.76	3	754 748.25	
L323	75 700.04	3	754 381.44		R323	74 585.59	3	754 772.77	
L324	75 615.84	3	754 369.16		R324	74 513.15	3	754 837.28	
L325	75 528.83	3	754 338.92		R325	74 512.89	3	754 836.74	
L326	75 531.62	3	754 327.34		R326	74 483.70	3	754 864.40	
L327	75 483.04	3	754 313.22		R327	74 479.46	3	754 867.95	
L328	75 314.44	3	754 264.21		R328	74 467.97	3	754 873.80	
L329	75 243.33	3	754 253.59		R329	74 367.51	3	754 920.73	
L330	75 158.39	3	754 246.31		R330	74 234.67	3	754 963.64	
L331	75 141.78	3	754 248.43		R331	74 101.73	3	755 006.02	
L332	75 065.46	3	754 263.41		R332	73 967.31	3	755 045.27	
L333	75 046.80	3	754 266.93		R333	73 874.41	3	755 076.99	
L334	75 005.28	3	754 279.84		R334	73 767.50	3	755 110.14	
L335	74 942.59	3	754 304.78		R335	73 713.69	3	755 125.10	
L336	74 900.21	3	754 329.58		R336	73 583.10	3	755 158.42	
L337	74 867.18	3	754 350.56		R337	73 461.63	3	755 189.91	
L338	74 746.23	3	754 412.27		R338	73 457.67	3	755 189.42	
L339	74 700.91	3	754 490.16		R339	73 345.21	3	755 225.17	
L340	74 652.26	3	754 586.52		R340	73 253.94	3	755 240.80	
L341	74 622.14	3	754 640.65		R341	73 248.04	3	755 241.41	
L342	74 592.30	3	754 682.58		R342	73 195.77	3	755 253.92	
L343	74 584.15	3	754 706.16		R343	73 152.39	3	755 232.53	
L344	74 495.29	3	754 800.79		R344	73 094.05	3	755 220.83	
L345	74 485.70	3	754 811.00		R345	73 044.24	3	755 205.03	
L346	74 432.00	3	754 852.57		R346	72 995.14	3	755 188.75	
L347	74 371.24	3	754 886.57		R347	72 953.69	3	755 177.52	
L348	74 250.47	3	754 925.85		R348	72 884.53	3	755 167.53	
L349	74 078.56	3	754 978.64		R349	72 828.46	3	755 167.08	
L350	73 904.44	3	755 030.89		R350	72 758.69	3	755 169.83	
L351	73 850.05	3	755 045.05		R351	72 706.15	3	755 188.80	
L352	73 822.28	3	755 048.21		R352	72 586.58	3	755 233.06	
L353	73 778.46	3	755 049.31		R353	72 443.44	3	755 286.29	
L354	73 751.64	3	755 056.25		R354	72 437.51	3	755 288.20	
L355	73 725.20	3	755 064.83		R355	72 434.98	3	755 284.29	
L356	73 712.45	3	755 069.88		R356	72 270.13	3	755 346.90	
L357	73 686.79	3	755 083.81		R357	71 953.63	3	755 465.31	
					Vel Sheet 16 Van of 18 P922/16				



PADRESERWE KOÖRDINATE / ROAD RESERVE CO-ORDINATES									
LINKERKANT/LEFT HAND SIDE					REGTERKANT/RIGHT HAND SIDE				
	Y		X	WG 25°		Y		X	
L358	73 580.91	3	755 123.35		R358	71 776.68	3	755 532.40	
L359	73 464.19	3	755 162.58		R359	71 368.17	3	755 690.63	
L360	73 384.95	3	755 185.57		R360	70 851.57	3	755 882.87	
L361	73 328.44	3	755 203.11		R361	70 408.79	3	755 950.35	
L362	73 286.65	3	755 209.94		R362	70 386.92	3	755 953.89	
L363	73 205.50	3	755 214.05		R363	70 315.30	3	755 939.96	
L364	73 174.77	3	755 210.36		R364	70 262.96	3	755 923.50	
L365	73 107.08	3	755 195.02		R365	70 123.79	3	755 865.07	
L366	73 028.71	3	755 166.58		R366	70 059.99	3	755 840.15	
L367	72 921.32	3	755 132.43		R367	69 941.39	3	755 826.03	
L368	72 896.07	3	755 133.06		R368	69 876.94	3	755 801.39	
L369	72 828.27	3	755 127.34		R369	69 777.40	3	755 754.67	
L370	72 770.09	3	755 133.50		R370	69 688.55	3	755 717.67	
L371	72 601.80	3	755 189.59		R371	69 605.59	3	755 700.67	
L372	72 524.74	3	755 218.33		R372	69 584.60	3	755 698.50	
L373	72 433.93	3	755 258.28		R373	69 536.80	3	755 693.56	
L374	72 429.22	3	755 259.74		R374	69 467.72	3	755 691.90	
L375	72 285.87	3	755 313.90		R375	69 359.77	3	755 709.76	
L376	71 360.16	3	755 665.19		R376	69 280.70	3	755 736.76	
L377	70 985.79	3	755 807.37		R377	69 224.99	3	755 764.72	
L378	70 890.14	3	755 843.12		R378	69 208.85	3	755 772.82	
L379	70 836.61	3	755 859.75		R379	69 145.89	3	755 823.52	
L380	70 769.41	3	755 872.94		R380	69 038.63	3	755 922.23	
L381	70 607.01	3	755 897.27		R381	68 833.52	3	756 180.73	
L382	70 448.12	3	755 920.33		R382	68 807.15	3	756 213.20	
L383	70 382.43	3	755 921.62		R383	68 770.14	3	756 254.67	
L384	70 313.83	3	755 910.84		R384	68 727.49	3	756 289.85	
L385	70 262.29	3	755 893.80		R385	68 703.36	3	756 308.38	
L386	70 232.38	3	755 883.64		R386	68 647.21	3	756 346.37	
L387	70 184.66	3	755 856.27		R387	68 496.24	3	756 405.13	
L388	70 136.25	3	755 829.26		R388	68 485.16	3	756 407.50	
L389	69 975.12	3	755 790.82		R389	68 474.15	3	756 404.88	
L390	69 942.07	3	755 785.87		R390	68 428.50	3	756 412.32	
L391	69 884.17	3	755 777.21		R391	68 417.38	3	756 414.42	
L392	69 799.26	3	755 735.55		R392	68 352.04	3	756 426.79	
L393	69 786.77	3	755 729.42		R393	68 311.49	3	756 439.94	
L394	69 720.16	3	755 701.87		R394	68 266.54	3	756 470.65	
L395	69 653.70	3	755 682.27		R395	68 260.31	3	756 477.52	
L396	69 559.69	3	755 663.59		R396	68 221.48	3	756 521.20	
L397	69 491.06	3	755 662.60		R397	68 188.85	3	756 566.28	
L398	69 477.54	3	755 662.60		R398	68 183.21	3	756 594.96	
L399	69 409.62	3	755 670.05		R399	68 179.76	3	756 746.97	
L400	69 371.69	3	755 673.47		R400	68 175.55	3	756 802.96	
L401	69 299.44	3	755 691.47		R401	68 163.39	3	756 846.02	
L402	69 231.48	3	755 726.36		R402	68 151.97	3	756 870.88	
L403	69 182.50	3	755 757.27		R403	68 145.68	3	756 884.57	
L404	69 154.61	3	755 777.68		R404	68 084.76	3	756 942.99	
L405	69 098.27	3	755 818.38		R405	67 957.94	3	757 016.11	
L406	69 059.59	3	755 857.05		R406	67 928.82	3	757 045.82	
L407	69 024.92	3	755 897.68		R407	67 898.38	3	757 092.50	
L408	69 008.37	3	755 913.95		R408	67 883.45	3	757 131.55	
					<div> <div>Vel Sheet 17</div> <div>Van of 18</div> <div>P922/16</div> </div>				

PADRESERWE KOÖRDINATE / ROAD RESERVE CO-ORDINATES							
LINKERKANT/LEFT HAND SIDE				REGTERKANT/RIGHT HAND SIDE			
	Y	X	WG 25º		Y	X	
L409	68 953.20	3 755 985.35		R409	67 873.30	3 757 244.54	
L410	68 914.41	3 756 034.15		R410	67 845.93	3 757 352.71	
L411	68 855.86	3 756 110.71		R411	67 806.92	3 757 414.55	
L412	68 805.86	3 756 175.11		R412	67 797.56	3 757 426.06	
L413	68 770.64	3 756 216.64		R413	67 764.10	3 757 467.45	
L414	68 721.12	3 756 262.88		R414	67 723.25	3 757 505.16	
L415	68 677.66	3 756 295.19		R415	67 684.91	3 757 532.19	
L416	68 620.40	3 756 328.72		R416	67 526.06	3 757 635.48	
L417	68 582.96	3 756 345.09		R417	67 357.02	3 757 742.36	
L418	68 510.98	3 756 369.88		R418	67 181.96	3 757 850.12	
L419	68 459.99	3 756 375.35		R419	66 847.66	3 758 061.75	
L420	68 431.84	3 756 379.41		R420	66 801.81	3 758 090.77	
L421	68 357.42	3 756 381.76		R421	66 637.29	3 758 194.41	
L422	68 309.45	3 756 392.60		R422	66 424.83	3 758 328.58	
L423	68 285.04	3 756 424.04		R423	66 426.21	3 758 350.96	
L424	68 229.65	3 756 461.33		R424	66 414.16	3 758 354.34	
L425	68 192.73	3 756 502.05					
L426	68 165.36	3 756 549.81					
L427	68 150.22	3 756 602.39					
L428	68 147.76	3 756 657.90					
L429	68 153.33	3 756 737.97					
L430	68 153.33	3 756 783.14					
L431	68 140.98	3 756 821.21					
L432	68 082.65	3 756 911.34					
L433	68 053.13	3 756 931.06					
L434	67 973.28	3 756 973.09					
L435	67 931.33	3 757 002.68					
L436	67 911.70	3 757 024.31					
L437	67 892.81	3 757 045.33					
L438	67 866.25	3 757 092.78					
L439	67 850.70	3 757 146.21					
L440	67 832.59	3 757 239.97					
L441	67 824.10	3 757 312.02					
L442	67 809.51	3 757 335.55					
L443	67 799.57	3 757 359.96					
L444	67 790.65	3 757 386.96					
L445	67 778.76	3 757 410.24					
L446	67 729.49	3 757 466.35					
L447	67 696.50	3 757 491.91					
L448	67 674.36	3 757 509.07					
L449	67 522.20	3 757 605.49					
L450	66 853.05	3 758 028.23					
L451	66 759.22	3 758 087.59					
L452	66 625.76	3 758 172.02					
L453	66 416.51	3 758 304.39					
L454	66 392.49	3 758 319.20					
				Vel Sheet 18 Van of 18 P922/16			



Printed by and obtainable from the Government Printer, Bosman Street, Private Bag X85, Pretoria, 0001  
Contact Centre Tel: 012-748 6200. eMail: [info.egazette@gpw.gov.za](mailto:info.egazette@gpw.gov.za)  
Publications: Tel: (012) 748 6053, 748 6061, 748 6065