



Government Gazette Staatskoerant

REPUBLIC OF SOUTH AFRICA
REPUBLIEK VAN SUID AFRIKA

Vol. 702

11

December
Desember 2023

No. 49854



N.B. The Government Printing Works will not be held responsible for the quality of "Hard Copies" or "Electronic Files" submitted for publication purposes



AIDS HELPLINE: 0800-0123-22 Prevention is the cure

IMPORTANT NOTICE:

THE GOVERNMENT PRINTING WORKS WILL NOT BE HELD RESPONSIBLE FOR ANY ERRORS THAT MIGHT OCCUR DUE TO THE SUBMISSION OF INCOMPLETE / INCORRECT / ILLEGIBLE COPY.

No FUTURE QUERIES WILL BE HANDLED IN CONNECTION WITH THE ABOVE.

Contents

<i>No.</i>	<i>Gazette</i>		<i>Page</i>
	<i>No.</i>		<i>No.</i>

GOVERNMENT NOTICES • GOEWERMENTSKENNISGEWINGS**Transport, Department of/ Vervoer, Departement van**

4185	South African National Roads Agency Limited and the National Roads Act (7/1998): Repeal of Declarations No. 927 of 2021 and No. 583 of 2015 and Re-declaration of National Road R571 Section 1: Mananga Border Post to Komatipoort	49854	3
4185	Suid-Afrikaanse Nasionale Padagentskap Beperk en Nasionale Paaie Wet (7/1998): Intrekking van Verklarings No. 927 van 2021 en No. 583 van 2015 en Herverklaring van Nasionale Pad R571 Seksie 1: Mananga Grenspos tot Komatipoort	49854	4

GOVERNMENT NOTICES • GOEWERMENTSKENNISGEWINGS

DEPARTMENT OF TRANSPORT

NO. 4185

11 December 2023

**THE SOUTH AFRICAN NATIONAL ROADS
AGENCY SOC LIMITED**Registration No: 1998/009584/30

**REPEAL OF DECLARATIONS No. 927 OF 2021 AND No. 583 OF 2015 AND RE-DECLARATION OF
NATIONAL ROAD R571 SECTION 1: MANANGA BORDER POST TO KOMATIPOORT**

By virtue of section 40(1)(b) of the South African National Roads Agency Limited and the National Roads Act 1998 (Act No. 7 of 1998), I hereby repeal Declarations No. 927 of 2021 and No. 583 of 2015, and by virtue of section 40(1)(a) of the said Act, I hereby declare the route, as indicated on the subjoining Plan P804/12, sheets 1 to 13, as a National Road.

(National Road R571 Section 1: Mananga Border Post (Swaziland) – Komatipoort)


MINISTER OF TRANSPORT

DEPARTEMENT VAN VERVOER

NO. 4185

11 Desember 2023

**DIE SUID-AFRIKAANSE NASIONALE
PADAGENTSKAP MSB BEPERK**

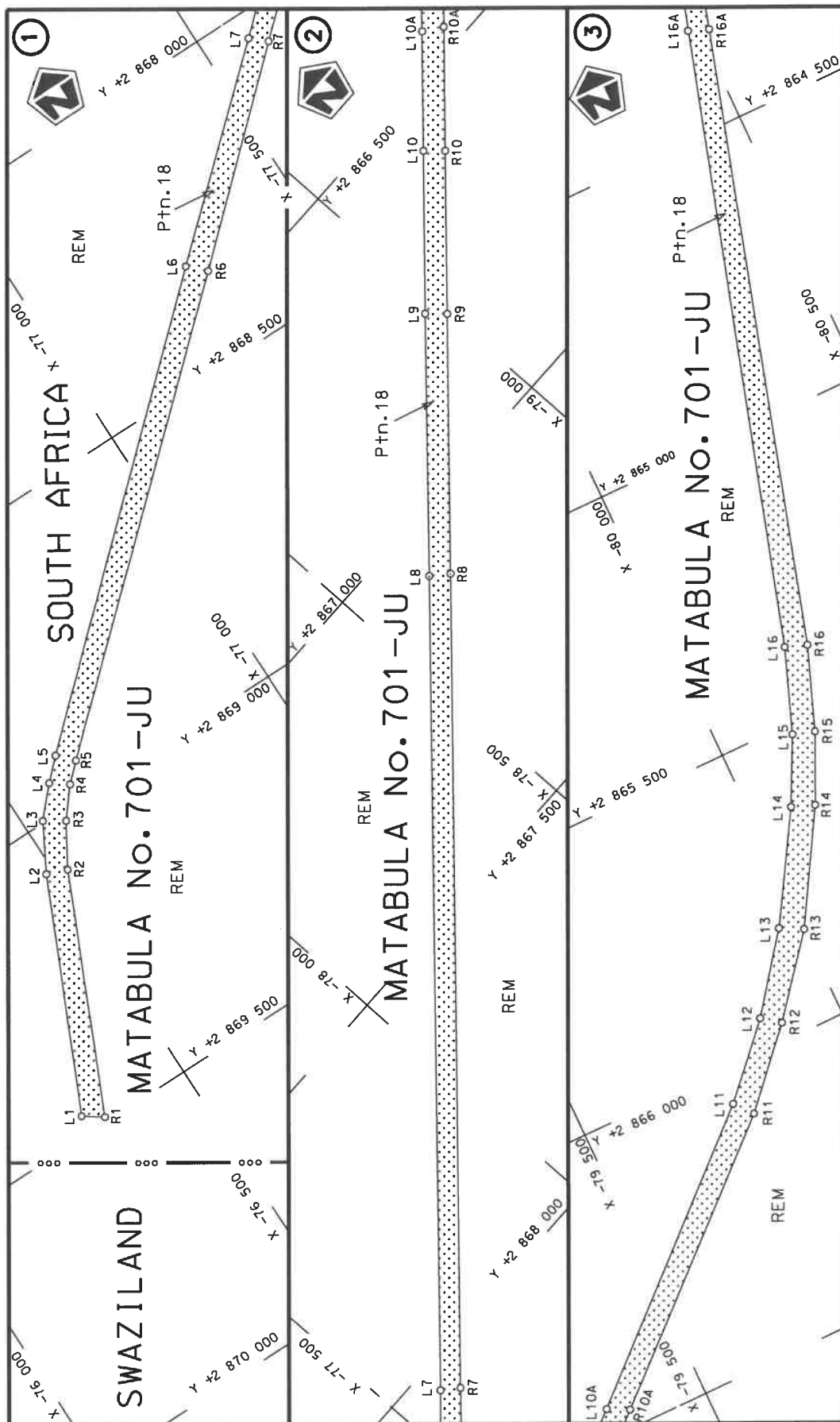
Registrasie No: 1998/009584/30

**INTREKKING VAN VERKLARINGS No. 927 VAN 2021 EN No. 583 VAN 2015 EN HERVERKLARING
VAN NASIONALE PAD R571 SEKSIE 1: MANANGA GRENSPOS TOT KOMATIPOORT**

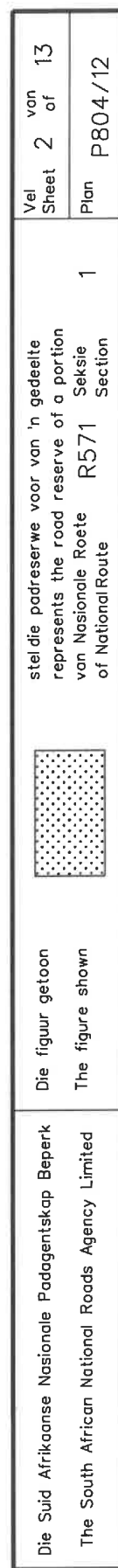
Kragtens Artikel 40(1)(b) van die Suid-Afrikaanse Nasionale Padagentskap Beperk en Nasionale Paaie Wet 1998 (Wet No. 7 van 1998), trek ek hiermee Verklarings No. 927 van 2021 en No. 583 van 2015 in, en kragtens Artikel 40(1)(a) van genoemde Wet verklaar ek hiermee die roete soos aangetoon op meegaande Plan P804/12, velle 1 tot 13, as 'n Nasionale Pad.

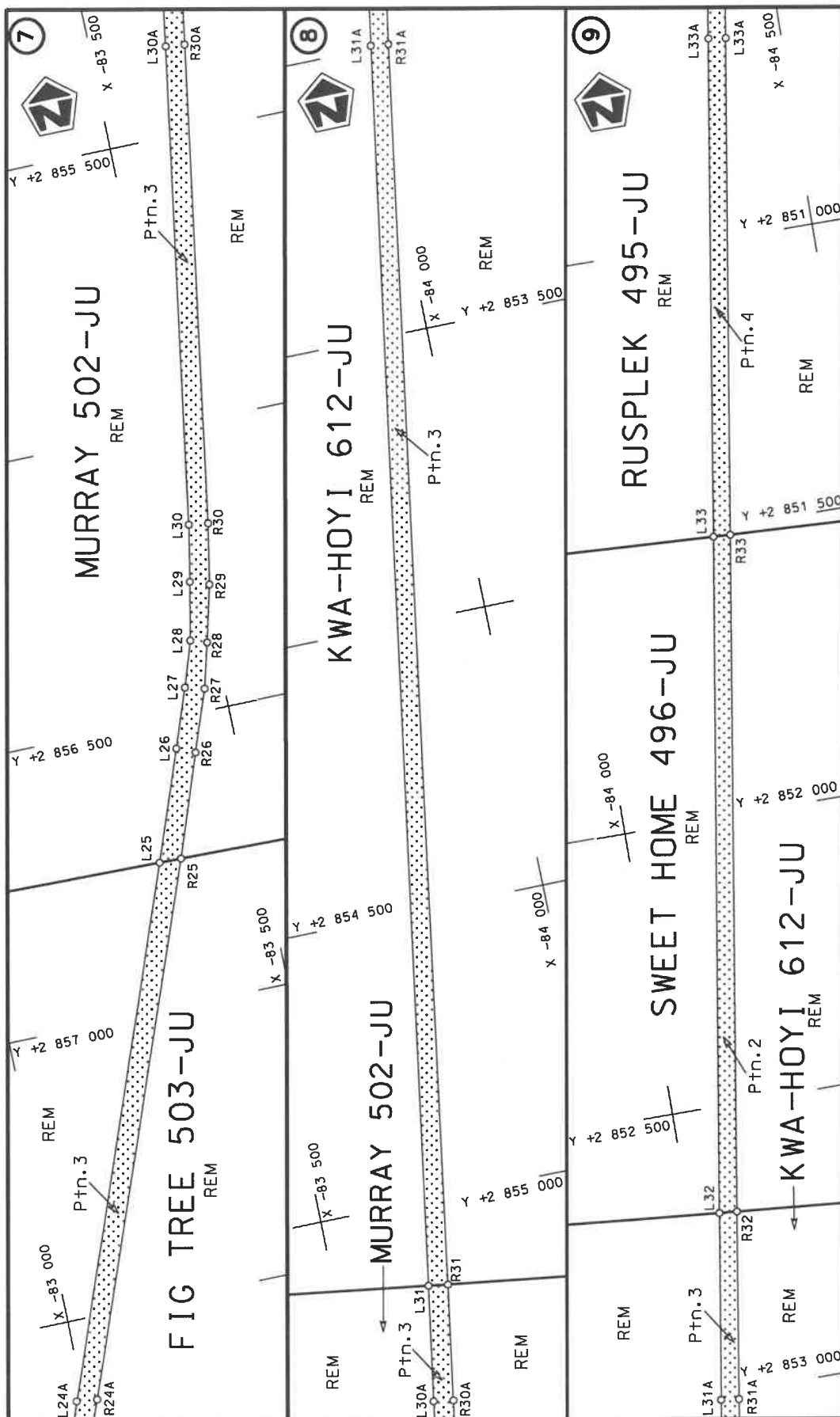
(Nasionale Pad R571 Seksie 1: Mananga Grenspos – Komatipoort)


MINISTER VAN VERVOER



Die Suid Afrikaanse Nasionale Padagentskap Beperk The South African National Roads Agency Limited	Die figuur getoon The figure shown	steldie padreserwe voor van 'n gedeelte represents the road reserve of a portion van Nasionale Roete R571 Sektie of National Route of National Route	Vel Sheet 1 of 13	Plan P804/12
--	---------------------------------------	---	----------------------	--------------



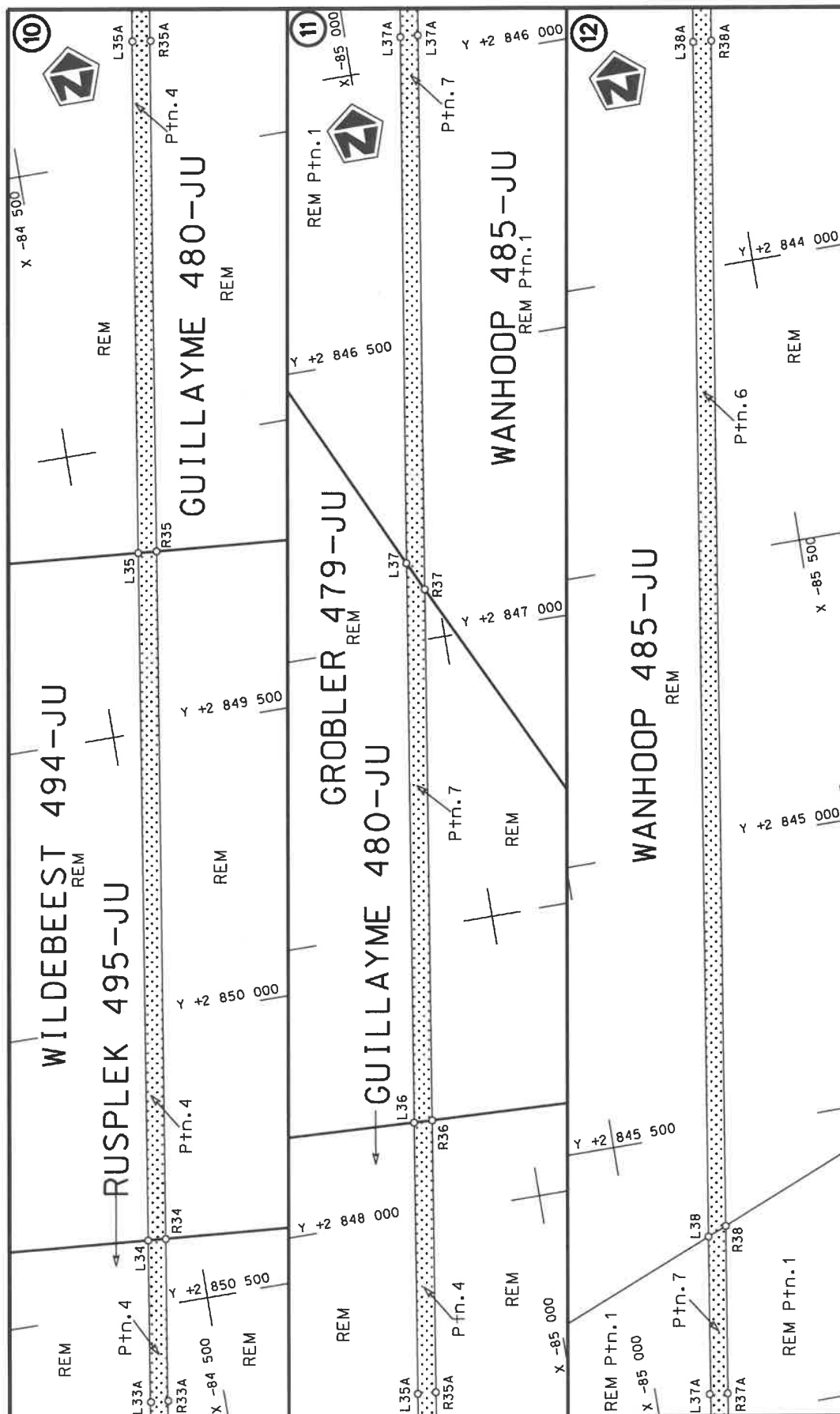


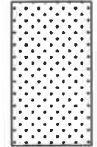
Die Suid Afrikaanse Nasionale Padagentskap Beperk
The South African National Roads Agency Limited

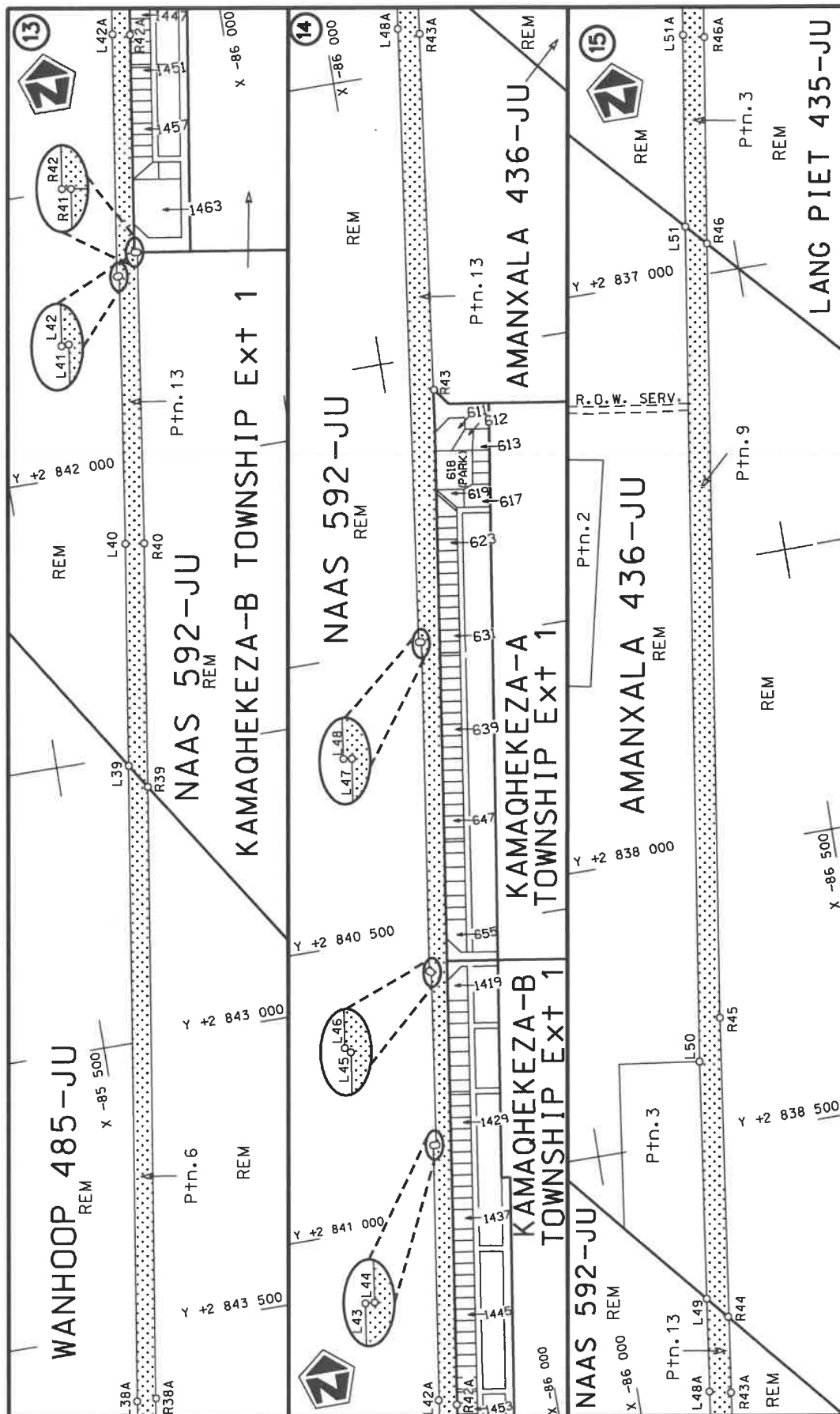
Die figuur getoon
The figure shown

stel die padreserwe voor van 'n gedeelte
represents the road reserve of a portion
van Nasionale Roete R571 Sektie
of National Route 1 Section

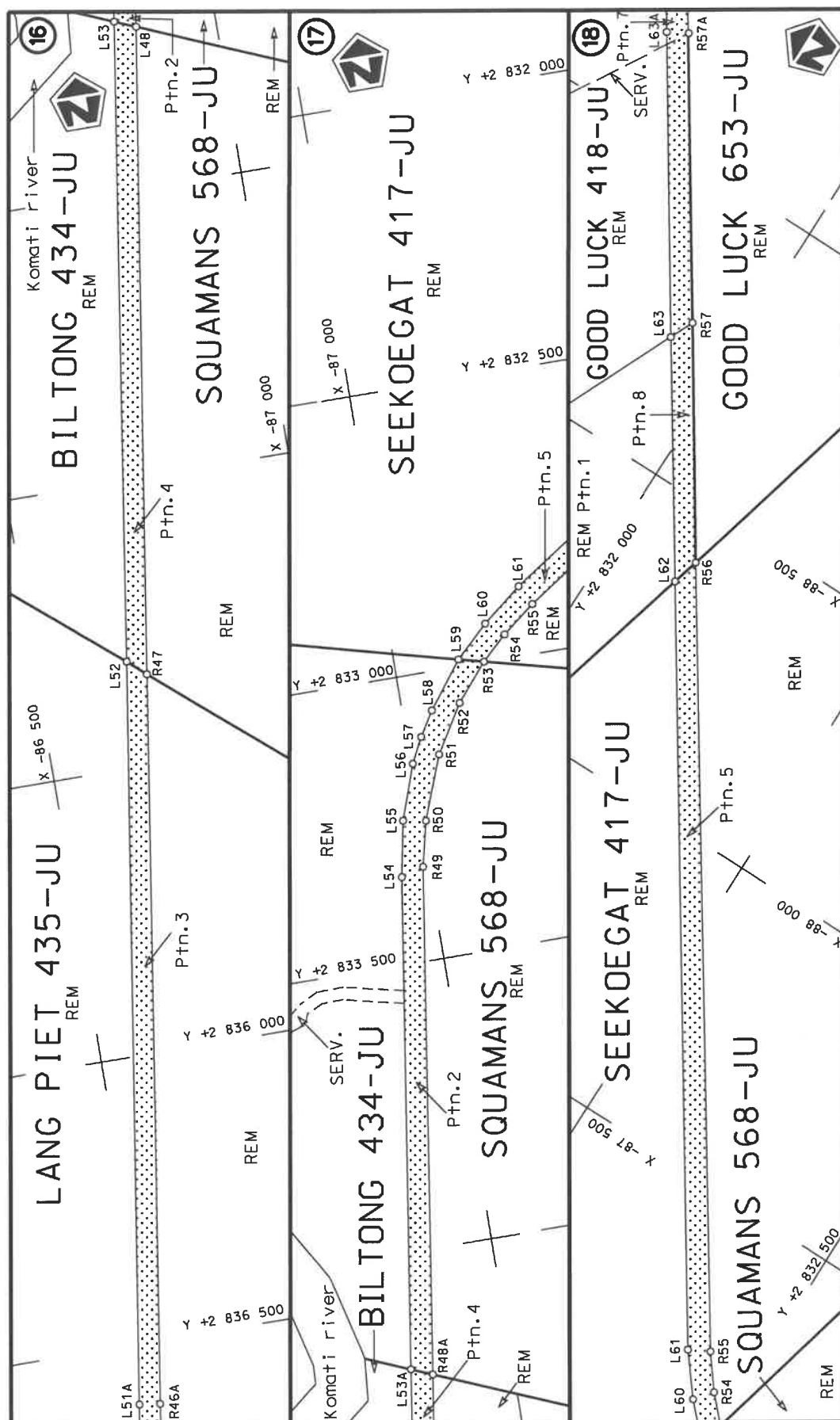
Vel 3 van 13
Sheet 3 of 13
Plan P804/12



Die Suid Afrikaanse Nasionale Padagentskap Beperk The South African National Roads Agency Limited	Die figuur getoon The figure shown		steldie padreserve voor van 'n gedeelte represents the road reserve of a portion van Nasionale Roete R571 of National Route Section	Vel Sheet 4 of 13	Plan P804/12
--	---------------------------------------	---	--	----------------------	-----------------



Die Suid Afrikaanse Nasionale Padagentskap Beperk The South African National Roads Agency Limited	Die figuur getoon The figure shown		steldie padreserwe voor van 'n gedeelte represents the road reserve of a portion van Nasionale Roete R571 of National Route Section
Vel Sheet 5 of 13	1	Plan P804/12	13



Die Suid Afrikaanse Nasionale Padagentskap Beperk
The South African National Roads Agency Limited

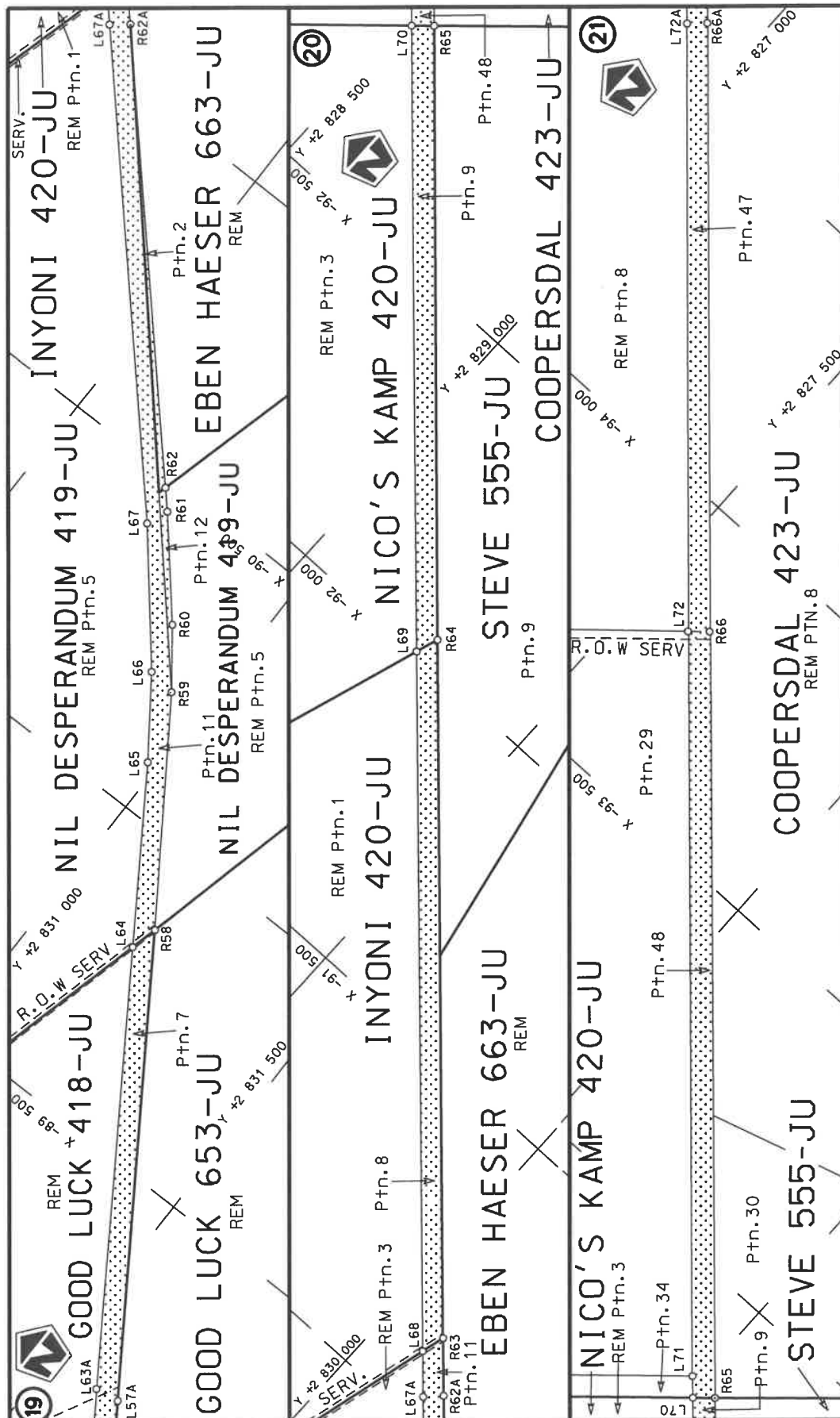
Die figuur getoon
The figure shown



stel die padreserwe voor van 'n gedeelte
represents the road reserve of a portion
van Nasionale Roete R571
of National Route Section

Vel
Sheet 6 of 13

Plan
P804/12

Vel
Sheet 7 of 13Plan
P804/12

steldie padreserwe voor van 'n gedeelte
represents the road reserve of a portion
van Nasionale Roete R571 Seksie
of National Route Section

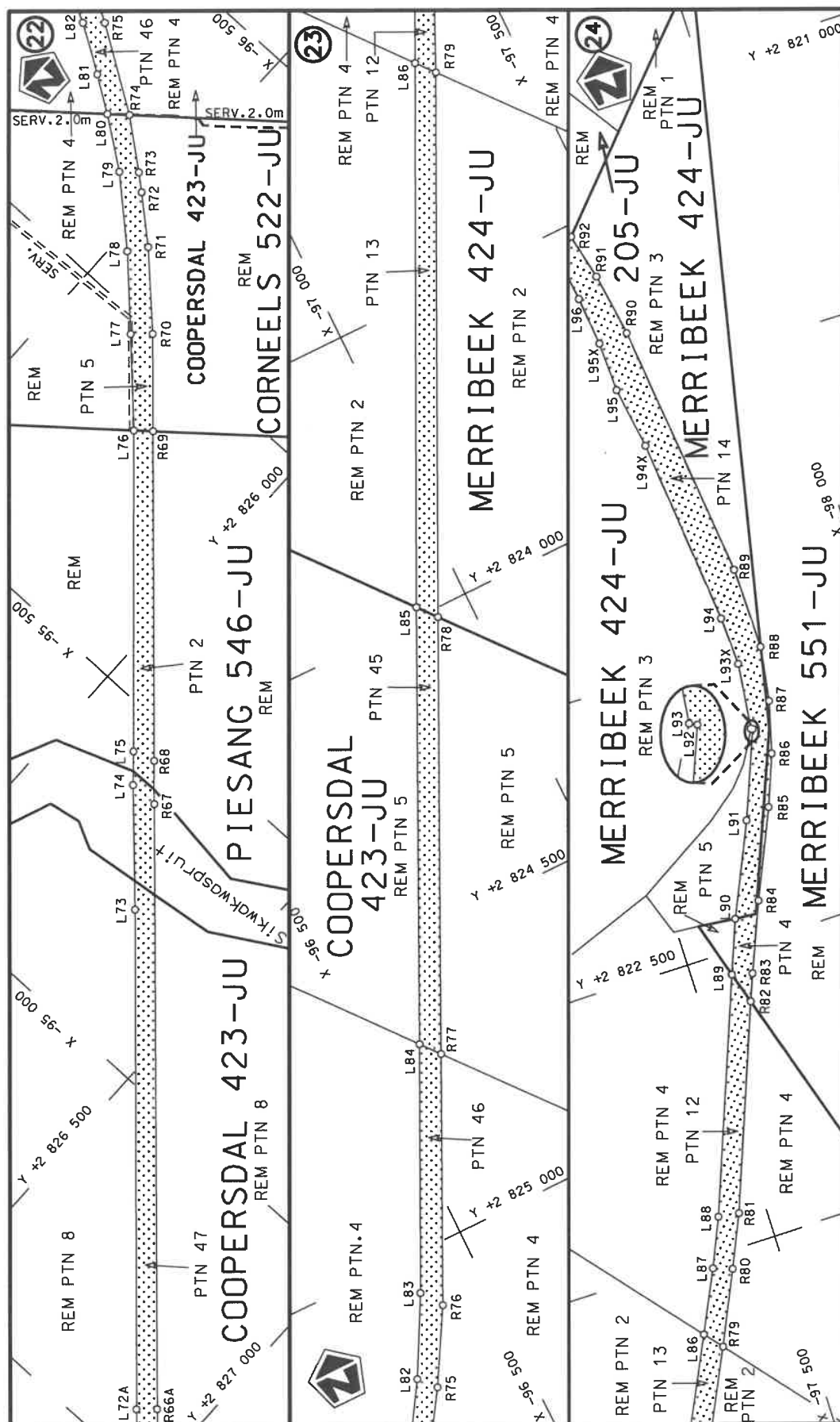


Die figuur getoon

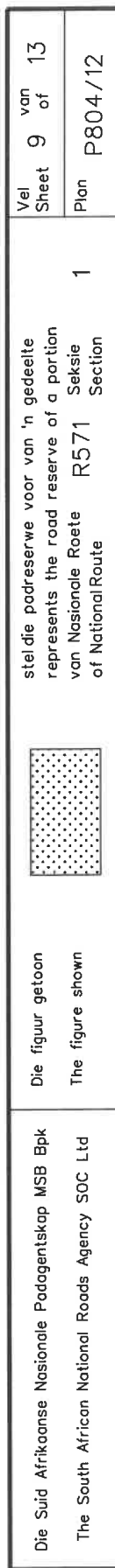
The figure shown

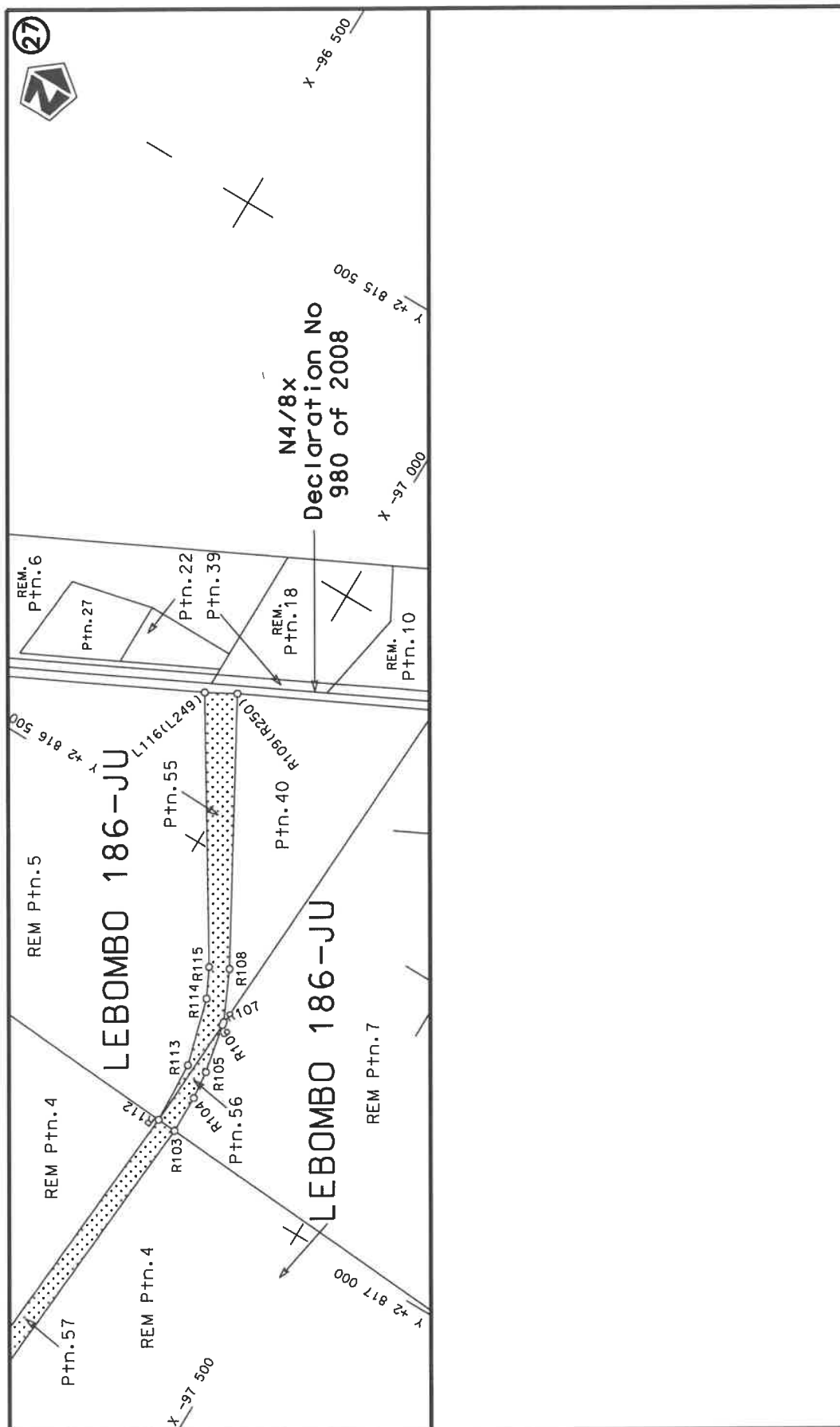
Die Suid Afrikaanse Nasionale Padagentskap Beperk


The South African National Roads Agency Limited



<p>Die Suid Afrikaanse Nasionale Padagentskap MSB Bpk</p> <p>The South African National Roads Agency SOC Ltd</p>	<p>Die figuur getoon</p> <p>The figure shown</p>	<p>steeldie padreserwe voor van 'n gedeelte</p> <p>represents the road reserve of a portion</p> <p>van Nasionale Roete R571</p> <p>of National Route</p>	<p>Vel Sheet 8 of 13</p> <p>Plan P804/12</p>
--	--	--	--





Die Suid Afrikaanse Nasionale Padagentskap Beperk	Die figuur getoon		stel die padreserwe voor van 'n gedeelte represents the road reserve of a portion	Vel 10 van 13
The South African National Roads Agency Limited	The figure shown		van Nasionale Roete R571 of National Route of National Route	Plan P804/12

PADRESERVE KOÖRDINATE / ROAD RESERVE CO-ORDINATES									
LINKERKANT/LEFT HAND SIDE					REGTERKANT/RIGHT HAND SIDE				
	Y		X	WG 31 ^o		Y		X	
L1	-76 307.31	2	869 467.90		R1	-76 340.66	2	869 491.56	
L2	-76 486.54	2	869 078.29		R2	-76 522.21	2	869 092.27	
L3	-76 532.08	2	868 996.83		R3	-76 566.60	2	869 018.90	
L4	-76 577.70	2	868 947.43		R4	-76 607.17	2	868 969.29	
L5	-76 613.03	2	868 912.93		R5	-76 638.38	2	868 939.92	
L6	-77 270.27	2	868 319.34		R6	-77 298.68	2	868 347.57	
L7	-77 578.90	2	868 044.16		R7	-77 605.32	2	868 067.63	
L8	-78 635.16	2	867 084.52		R8	-78 662.75	2	867 109.84	
L9	-78 974.06	2	866 774.97		R9	-78 999.23	2	866 804.09	
L10	-79 185.07	2	866 583.57		R10	-79 210.29	2	866 612.14	
L11	-79 758.53	2	866 061.06		R11	-79 784.65	2	866 092.13	
L12	-79 865.28	2	865 945.52		R12	-79 896.50	2	865 968.78	
L13	-79 961.94	2	865 816.54		R13	-80 001.36	2	865 836.98	
L14	-80 071.37	2	865 633.14		R14	-80 111.47	2	865 648.19	
L15	-80 127.54	2	865 519.30		R15	-80 165.67	2	865 531.35	
L16	-80 179.67	2	865 374.68		R16	-80 217.50	2	865 388.51	
L17	-80 506.35	2	864 241.85		R17	-80 541.35	2	864 249.95	
L18	-80 552.19	2	864 087.52		R18	-80 586.30	2	864 101.91	
L19	-80 651.80	2	863 820.06		R19	-80 698.94	2	863 828.93	
L20	-81 121.79	2	862 570.33		R20	-81 158.96	2	862 580.56	
L21	-81 644.38	2	861 192.91		R21	-81 676.85	2	861 202.32	
L22	-81 864.29	2	860 602.33		R22	-81 896.24	2	860 613.17	
L23	-82 264.43	2	859 549.52		R23	-82 298.04	2	859 549.24	
L24	-82 787.66	2	858 166.03		R24	-82 823.28	2	858 166.25	
L25	-83 323.83	2	856 744.47		R25	-83 361.88	2	856 745.31	
L26	-83 393.98	2	856 554.46		R26	-83 425.51	2	856 568.44	
L27	-83 430.94	2	856 452.96		R27	-83 464.51	2	856 461.96	
L28	-83 457.33	2	856 374.17		R28	-83 485.80	2	856 383.63	
L29	-83 477.90	2	856 273.11		R29	-83 510.76	2	856 284.75	
L30	-83 497.00	2	856 174.54		R30	-83 530.88	2	856 179.32	
L31	-83 662.01	2	855 149.03		R31	-83 695.43	2	855 153.75	
L32	-84 051.39	2	852 685.83		R32	-84 081.98	2	852 688.60	
L33	-84 237.87	2	851 511.97		R33	-84 267.43	2	851 513.52	
L34	-84 412.72	2	850 384.58		R34	-84 443.55	2	850 387.00	
L35	-84 596.35	2	849 187.52		R35	-84 628.33	2	849 190.11	
L36	-84 804.39	2	847 837.25		R36	-84 836.23	2	847 838.68	
L37	-84 954.43	2	846 863.65		R37	-84 978.53	2	846 914.52	
L38	-85 137.70	2	845 682.55		R38	-85 170.78	2	845 669.08	
L39	-85 624.84	2	842 517.18		R39	-85 651.59	2	842 559.13	
L40	-85 683.70	2	842 130.94		R40	-85 716.11	2	842 135.74	
L41	-85 750.48	2	841 664.86		R41	-85 788.73	2	841 628.90	
L42	-85 746.28	2	841 665.10		R42	-85 783.51	2	841 628.12	
L43	-85 862.21	2	840 871.16		R43	-86 085.16	2	839 560.73	
L44	-85 867.74	2	840 871.51		R44	-86 178.65	2	838 816.36	
L45	-85 909.69	2	840 570.48		R45	-86 251.15	2	838 294.19	
L46	-85 906.55	2	840 567.46		R46	-86 451.99	2	836 946.88	
L47	-85 990.04	2	839 994.40		R47	-86 691.48	2	835 341.66	
L48	-85 985.10	2	839 993.67		R48	-86 859.89	2	834 218.40	
L49	-86 147.02	2	838 778.70		R49	-86 991.03	2	833 335.90	
L50	-86 203.16	2	838 364.45		R50	-87 009.50	2	833 257.08	
L51	-86 419.50	2	836 911.18		R51	-87 051.34	2	833 146.25	
					<div> <div>Vel 11</div> <div>Sheet</div> </div> <div> <div>Van 13</div> <div>of</div> </div> <div>P804/12</div>				

PADRESERWE KOÖRDINATE / ROAD RESERVE CO-ORDINATES									
LINKERKANT/LEFT HAND SIDE					REGTERKANT/RIGHT HAND SIDE				
	Y		X	WG 31 ^a		Y		X	
L52	-86 660.46	2	835	314.09	R52	-87 101.70	2	833	063.06
L53	-86 823.30	2	834	203.12	R53	-87 155.53	2	832	998.63
L54	-86 951.19	2	833	347.50	R54	-87 198.94	2	832	957.58
L55	-86 969.72	2	833	249.98	R55	-87 255.92	2	832	913.34
L56	-87 003.28	2	833	154.46	R56	-88 407.35	2	832	142.37
L57	-87 025.54	2	833	110.47	R57	-88 757.98	2	831	909.96
L58	-87 051.85	2	833	067.77	R58	-89 860.88	2	831	173.76
L59	-87 112.27	2	832	987.49	R59	-90 206.69	2	830	938.40
L60	-87 168.68	2	832	933.22	R60	-90 300.32	2	830	866.57
L61	-87 237.27	2	832	878.51	R61	-90 450.61	2	830	736.80
L62	-88 359.95	2	832	129.75	R62	-90 481.69	2	830	708.24
L63	-88 716.47	2	831	891.37	R63	-91 142.27	2	830	100.67
L64	-89 813.21	2	831	162.07	R64	-92 044.33	2	829	271.27
L65	-90 084.22	2	830	982.03	R65	-92 837.20	2	828	543.97
L66	-90 213.03	2	830	889.18	R66	-93 828.53	2	827	634.85
L67	-90 412.87	2	830	721.86	R67	-95 388.06	2	826	211.26
L68	-91 101.47	2	830	089.76	R68	-95 444.33	2	826	160.11
L69	-92 004.84	2	829	257.93	R69	-95 871.07	2	825	771.40
L70	-92 811.29	2	828	514.52	R70	-95 996.96	2	825	656.48
L71	-92 839.27	2	828	488.73	R71	-96 104.29	2	825	548.52
L72	-93 803.36	2	827	606.33	R72	-96 167.55	2	825	475.48
L73	-95 228.35	2	826	310.01	R73	-96 190.14	2	825	448.41
L74	-95 387.76	2	826	161.07	R74	-96 253.39	2	825	368.60
L75	-95 432.04	2	826	121.94	R75	-96 344.00	2	825	228.23
L76	-95 849.48	2	825	745.34	R76	-96 416.01	2	825	102.84
L77	-95 970.84	2	825	627.83	R77	-96 607.06	2	824	705.69
L78	-96 074.29	2	825	526.06	R78	-96 939.17	2	824	015.72
L79	-96 168.04	2	825	422.20	R79	-97 354.18	2	823	157.15
L80	-96 228.64	2	825	338.69	R80	-97 411.83	2	823	032.58
L81	-96 268.34	2	825	278.99	R81	-97 452.51	2	822	943.02
L82	-96 318.39	2	825	199.59	R82	-97 585.84	2	822	595.81
L83	-96 390.00	2	825	066.43	R83	-97 603.98	2	822	550.06
L84	-96 580.59	2	824	673.72	R84	-97 653.18	2	822	431.98
L85	-96 912.55	2	823	983.58	R85	-97 720.21	2	822	281.37
L86	-97 328.65	2	823	126.31	R86	-97 754.26	2	822	193.68
L87	-97 379.53	2	823	021.04	R87	-97 777.97	2	822	104.48
L88	-97 416.31	2	822	937.82	R88	-97 792.82	2	822	009.57
L89	-97 568.68	2	822	540.55	R89	-97 789.84	2	821	866.56
L90	-97 604.41	2	822	449.53	R90	-97 737.76	2	821	414.03
L91	-97 676.03	2	822	291.50	R91	-97 717.31	2	821	303.45
L92	-97 735.26	2	822	142.23	R92	-97 695.75	2	821	223.09
L93	-97 732.36	2	822	140.83	R93	-97 561.31	2	820	674.85
L93X	-97 746.09	2	822	025.75	R94	-97 541.65	2	820	590.30
L94	-97 742.05	2	821	940.85	R95	-97 412.86	2	820	033.26
L94X	-97 708.78	2	821	611.86	R96	-97 378.99	2	819	827.55
L95	-97 690.60	2	821	503.84	R97	-97 355.98	2	819	668.65
L95X	-97 686.63	2	821	416.95	R98	-97 334.18	2	819	463.34
L96	-97 676.26	2	821	331.48	R99	-97 315.98	2	819	314.84
L97	-97 664.97	2	821	256.32	R100	-97 305.38	2	819	204.75
L98	-97 667.23	2	821	254.59	R101	-97 187.01	2	817	804.06
L99	-97 549.53	2	820	783.08	R102	-97 180.71	2	817	507.13
					<div> <div>Vel Sheet 12</div> <div>Van of 13</div> <div>P804/12</div> </div>				

PADRESERVE KOÖRDINATE / ROAD RESERVE CO-ORDINATES									
LINKERKANT/LEFT HAND SIDE					REGTERKANT/RIGHT HAND SIDE				
	Y		X	WG 31°		Y		X	
L100	-97 512.92	2	820 628.11		R103	-97 224.91	2	816 953.48	
L101	-97 502.77	2	820 588.17		R104	-97 224.45	2	816 887.07	
L102	-97 500.37	2	820 569.01		R105	-97 219.24	2	816 837.34	
L103	-97 477.05	2	820 465.35		R106	-97 201.88	2	816 752.18	
L104	-97 379.47	2	820 040.10		R107	-97 200.76	2	816 746.51	
L105	-97 342.18	2	819 833.38		R108	-97 161.97	2	816 661.85	
L106	-97 318.67	2	819 663.03		R109	-96 926.34	2	816 242.96	
L107	-97 294.24	2	819 464.49						
L108	-97 278.09	2	819 314.41						
L109	-97 265.37	2	819 205.67						
L110	-97 153.23	2	817 796.35						
L111	-97 146.92	2	817 505.54						
L112	-97 191.38	2	816 951.06						
L113	-97 185.94	2	816 843.31						
L114	-97 154.33	2	816 726.90						
L115	-97 129.70	2	816 677.31						
L116	-96 876.31	2	816 270.45						

Printed by and obtainable from the Government Printer, Bosman Street, Private Bag X85, Pretoria, 0001
Contact Centre Tel: 012-748 6200. eMail: info.egazette@gpw.gov.za
Publications: Tel: (012) 748 6053, 748 6061, 748 6065