



# GOVERNMENT GAZETTE

## OF THE

# REPUBLIC OF NAMIBIA

N\$7.20

WINDHOEK - 22 September 2021

No. 7641

### CONTENTS

*Page*

#### GOVERNMENT NOTICE

No. 206	Declaration of areas of inland waters as fisheries reserves: Shampendje, Ngemba, Sharudiva, Kanyeve, Shirudishagove, Shamange, Situruturu, Mashogi, Sayipundu and Kavango river mainstream fishing areas in Joseph Mbambangandu Conservancy: Inland Fisheries Resources Act, 2003 .....	1
---------	-----------------------------------------------------------------------------------------------------------------------------------------------------------------------------------------------------------------------------------------------------------------------------------------	---

## Government Notice

### MINISTRY OF FISHERIES AND MARINE RESOURCES

No. 206

2021

DECLARATION OF AREAS OF INLAND WATERS AS FISHERIES RESERVES:  
SHAMPENDJE, NGEMBA, SHARUDIVA, KANYEVA, SHIRUDISHAGOVE, SHAMANGE,  
SITURUTURU, MASHOGI, SAYIPUNDU AND KAVANGO RIVER MAINSTREAM FISHING  
AREAS IN JOSEPH MBAMBANGANDU CONSERVANCY:  
INLAND FISHERIES RESOURCES ACT, 2003

Under section 22(1) of the Inland Fisheries Resources Act, 2003 (Act No. 1 of 2003), I, in response to an initiative of the Kavango Regional Council and the Shambyu Traditional Authority and in consultation with that Regional Council and that Traditional Authority, declare the Shampendje, Ngemba, Sharudiva, Kanyeve, Shirudishagove, Shamange, Situruturu, Mashogi, Sayipundu and Kavango River mainstream fishing areas in the Joseph Mbambangandu Conservancy as fisheries reserves more fully described in, and subject to the conditions set out in, the Schedule.

**D. KLAZEN**

**MINISTER OF FISHERIES AND MARINE RESOURCES**

## SCHEDULE

### 1. Description of fisheries reserves

- (1) The Shampendje, Ngemba, Sharudiva, Kanyeve, Shirudishagove, Shamange, Situruturu, Mashogi, Sayipundu and Kavango River mainstream fishing areas, formally named Fisheries Reserves. These areas are within the borders of the Joseph Mbambangandu Conservancy. The boundaries of the conservancy are described in the Government Notice No. 63 of 1 April 2004. It borders the Kavango River in the north, which is also the international border with Angola. No other conservancy borders the Joseph Mbambangandu Conservancy.
- (2) Shampendje is a channel on the floodplain that floods from the mainstream during the flood season. Some pools form as the water decreases after the flood. The depth varies from half a meter to 3.5m. Cattle graze on the floodplains during the low water period. Reeds are present and some aquatic plants when the channel is flooded. Some sections of the area dry up during the low water period, but the large pools only dry up during extreme droughts.
- (3) Ngemba and Sharudiva are on the same floodplain further downstream of Shampendje and form two separate channels that form pools during the low water period. These pools also dry up during extreme drought periods. They have similar vegetation as Shampendje with the depth of the pools varying between 1m and 3.5m.
- (4) Shirudishagove forms a side channel with local irrigation of vegetables and grain done during the low water period. It enters the mainstream further downstream. Many reeds are present with different types of aquatic vegetation.
- (5) Shamange is an inland channel, it does not enter the mainstream, that floods during the flood season with some sections more than 5m deep when fully flooded. Pools form and can keep water for extended periods of time. Large bream species are usually caught in these pools. Shallower areas are also present that do dry up regularly depending on the flood size.
- (6) Situruturu is within a floodplain, with deep pools becoming isolated during the low water period. This enters the mainstream further downstream. Floodplain vegetation with some reeds and different aquatic vegetation are present.
- (7) Mashogi is a pool at the end of a channel that floods from the mainstream. Not much vegetation present but does keep water for extended periods of time. Only dries up during extreme droughts.
- (8) Sayipundu is a depression within a floodplain and forms a channel that enters the mainstream further downstream. It consists of many reeds with isolated pools form during low water periods. It dries up during low water periods, but some pools do remain.
- (9) Mainstream Fisheries Reserve is the Kavango River that borders the conservancy is also a fisheries reserve. It is a mainstream habitat with marginal vegetation along the riverbank.

Its Coordinates is starts: S 17°54.179, E 020°01.142' and Ends: S 17°54.417', E 020°07.309'. It is perpendicular from the riverbank 40m towards the middle of the river.

## 2. GPS Coordinates and image of fisheries reserves

### 2.1 GPS Coordinates and image of Shampendje Fisheries Reserve

WGS 84 GPS units		hddd mm.mmm'			East		
		South			East		
		Degrees (°)	Minutes	Seconds (")	Degrees	Minutes	Seconds (")
Kavango	Shampendje	17	54	073	20	00	878
Kavango	Shampendje	17	54	084	20	00	909
Kavango	Shampendje	17	54	096	20	00	936
Kavango	Shampendje	17	54	115	20	00	965
Kavango	Shampendje	17	54	136	20	01	000
Kavango	Shampendje	17	54	152	20	01	029
Kavango	Shampendje	17	54	132	20	01	039
Kavango	Shampendje	17	54	105	20	01	008
Kavango	Shampendje	17	54	084	20	00	980
Kavango	Shampendje	17	54	060	20	00	946
Kavango	Shampendje	17	54	034	20	00	918
Kavango	Shampendje	17	54	000	20	00	889



Figure 1: The boundary of the Shampendje Fisheries reserve, Kavango River. (Perimeter 0.84km) (© 2018 Google LLC.).

### 2.2 GPS Coordinates and image of Ngemba and Sharudiva Fisheries Reserve

WGS 84 GPS units		hddd mm.mmm'			East		
		South			East		
		Degrees (°)	Minutes	Seconds (")	Degrees	Minutes	Seconds (")
Kavango	Ngemba	17	54	193	20	01	159
Kavango	Ngemba	17	54	232	20	01	215
Kavango	Ngemba	17	54	254	20	01	250

Kavango	Ngemba	17	54	281	20	01	283
Kavango	Ngemba	17	54	289	20	01	296
Kavango	Ngemba	17	54	298	20	01	315
Kavango	Ngemba	17	54	297	20	01	330
Kavango	Ngemba	17	54	308	20	01	357
Kavango	Ngemba	17	54	308	20	01	372
Kavango	Ngemba	17	54	307	20	01	393
Kavango	Ngemba	17	54	297	20	01	378
Kavango	Ngemba	17	54	276	20	01	336
Kavango	Ngemba	17	54	255	20	01	289
Kavango	Ngemba	17	54	216	20	01	205



Figure 2: The boundary of the Ngemba and Sharudiva Fisheries Reserve in the Joseph Mbambangandu Conservancy, Kavango River. (Perimeter 0.95km) (© 2018 Google LLC.).

### 2.3 GPS Coordinates and image of Kanyeve Fisheries Reserve

WGS 84 GPS units		hddd mm.mmm'					
		South			East		
		Degrees (°)	Minutes	Seconds (")	Degrees	Minutes	Seconds (")
Kavango	Kanyeve	17	54	348	20	01	292
Kavango	Kanyeve	17	54	377	20	01	339
Kavango	Kanyeve	17	54	405	20	01	413
Kavango	Kanyeve	17	54	423	20	01	481
Kavango	Kanyeve	17	54	429	20	01	536
Kavango	Kanyeve	17	54	430	20	01	620
Kavango	Kanyeve	17	54	420	20	01	672
Kavango	Kanyeve	17	54	399	20	01	704
Kavango	Kanyeve	17	54	381	20	01	726
Kavango	Kanyeve	17	54	350	20	01	743
Kavango	Kanyeve	17	54	367	20	01	715
Kavango	Kanyeve	17	54	378	20	01	653

Kavango	Kanyevea	17	54	393	20	01	622
Kavango	Kanyevea	17	54	416	20	01	529
Kavango	Kanyevea	17	54	408	20	01	491
Kavango	Kanyevea	17	54	352	20	01	349
Kavango	Kanyevea	17	54	336	20	01	305



Figure 3: The boundary of the Kanyevea Fisheries Reserve in the Joseph Mbambangandu Conservancy, Kavango River. (Perimeter 1.57km) (© 2018 Google LLC.).

#### 2.4 GPS Coordinates and image of Shirudishagove Fisheries Reserve

WGS 84 GPS units		hddd mm.mmm'			East		
		South			East		
		Degrees (°)	Minutes	Seconds (")	Degrees	Minutes	Seconds (")
Kavango	Shirudishagove	17	54	290	20	02	033
Kavango	Shirudishagove	17	54	290	20	02	048
Kavango	Shirudishagove	17	54	288	20	02	067
Kavango	Shirudishagove	17	54	283	20	02	085
Kavango	Shirudishagove	17	54	282	20	02	120
Kavango	Shirudishagove	17	54	275	20	02	148
Kavango	Shirudishagove	17	54	269	20	02	182
Kavango	Shirudishagove	17	54	263	20	02	202
Kavango	Shirudishagove	17	54	239	20	02	224
Kavango	Shirudishagove	17	54	226	20	02	246
Kavango	Shirudishagove	17	54	207	20	02	284
Kavango	Shirudishagove	17	54	189	20	02	317
Kavango	Shirudishagove	17	54	159	20	02	348
Kavango	Shirudishagove	17	54	138	20	02	369
Kavango	Shirudishagove	17	54	122	20	02	374
Kavango	Shirudishagove	17	54	081	20	02	406
Kavango	Shirudishagove	17	54	106	20	02	366
Kavango	Shirudishagove	17	54	133	20	02	308

Kavango	Shirudishagove	17	54	158	20	02	248
Kavango	Shirudishagove	17	54	178	20	02	200
Kavango	Shirudishagove	17	54	197	20	02	169
Kavango	Shirudishagove	17	54	223	20	02	135
Kavango	Shirudishagove	17	54	241	20	02	120
Kavango	Shirudishagove	17	54	259	20	02	086
Kavango	Shirudishagove	17	54	270	20	02	070
Kavango	Shirudishagove	17	54	278	20	02	045
Kavango	Shirudishagove	17	54	281	20	02	033



Figure 4: The boundary of the Shirudishagove Fisheries Reserve in the Joseph Mbambangandu Conservancy, Kavango River. (Perimeter 1.58km) (© 2018 Google LLC.).

## 2.5 GPS Coordinates and image of Shamange Fisheries Reserve

WGS 84 GPS units		hddd mm.mmm'			East		
		South			Degrees	Minutes	Seconds
		Degrees (°)	Minutes	Seconds (")	Degrees	Minutes	Seconds (")
Kavango	Shamange	17	53	946	20	02	550
Kavango	Shamange	17	53	924	20	02	620
Kavango	Shamange	17	53	904	20	02	673
Kavango	Shamange	17	53	895	20	02	738
Kavango	Shamange	17	53	879	20	02	782
Kavango	Shamange	17	53	866	20	02	820
Kavango	Shamange	17	53	864	20	02	851
Kavango	Shamange	17	53	878	20	02	883
Kavango	Shamange	17	53	907	20	02	914
Kavango	Shamange	17	53	933	20	02	891
Kavango	Shamange	17	54	009	20	02	967
Kavango	Shamange	17	54	059	20	03	012
Kavango	Shamange	17	54	059	20	03	060
Kavango	Shamange	17	54	065	20	03	099

Kavango	Shamange	17	54	080	20	03	171
Kavango	Shamange	17	54	082	20	03	229
Kavango	Shamange	17	54	085	20	03	267
Kavango	Shamange	17	54	092	20	03	299
Kavango	Shamange	17	54	102	20	03	342
Kavango	Shamange	17	54	108	20	03	396
Kavango	Shamange	17	54	104	20	03	452
Kavango	Shamange	17	54	101	20	03	480
Kavango	Shamange	17	54	090	20	03	481
Kavango	Shamange	17	54	090	20	03	435
Kavango	Shamange	17	54	067	20	03	346
Kavango	Shamange	17	54	054	20	03	295
Kavango	Shamange	17	54	046	20	03	179
Kavango	Shamange	17	54	035	20	03	124
Kavango	Shamange	17	54	024	20	03	078
Kavango	Shamange	17	54	013	20	03	045
Kavango	Shamange	17	53	971	20	02	987
Kavango	Shamange	17	53	942	20	02	962
Kavango	Shamange	17	53	903	20	02	954
Kavango	Shamange	17	53	861	20	02	953
Kavango	Shamange	17	53	818	20	02	958
Kavango	Shamange	17	53	776	20	02	986
Kavango	Shamange	17	53	715	20	03	032
Kavango	Shamange	17	53	674	20	03	049
Kavango	Shamange	17	53	621	20	03	098
Kavango	Shamange	17	53	522	20	03	202
Kavango	Shamange	17	53	488	20	03	191
Kavango	Shamange	17	53	525	20	03	137
Kavango	Shamange	17	53	599	20	03	067
Kavango	Shamange	17	53	643	20	03	020
Kavango	Shamange	17	53	692	20	02	983
Kavango	Shamange	17	53	744	20	02	971
Kavango	Shamange	17	53	833	20	02	910
Kavango	Shamange	17	53	845	20	02	865
Kavango	Shamange	17	53	856	20	02	796
Kavango	Shamange	17	53	855	20	02	749
Kavango	Shamange	17	53	875	20	02	691
Kavango	Shamange	17	53	877	20	02	632



Figure 5: The boundary of the Shamange Fisheries Reserve in the Joseph Mbambangandu Conservancy, Kavango River. (Perimeter 5.43km) (© 2018 Google LLC.).

## 2.6 GPS Coordinates and image of Situruturu Fisheries Reserve

WGS 84 GPS units		hddd mm.mmm'					
		South			East		
		Degrees (°)	Minutes	Seconds (")	Degrees	Minutes	Seconds (")
Kavango	Situruturu	17	53	514	20	03	216
Kavango	Situruturu	17	53	487	20	03	277
Kavango	Situruturu	17	53	457	20	03	386
Kavango	Situruturu	17	53	431	20	03	488
Kavango	Situruturu	17	53	444	20	03	531
Kavango	Situruturu	17	53	523	20	03	561
Kavango	Situruturu	17	53	556	20	03	624
Kavango	Situruturu	17	53	575	20	03	684
Kavango	Situruturu	17	53	566	20	03	742
Kavango	Situruturu	17	53	590	20	03	803
Kavango	Situruturu	17	53	603	20	03	923
Kavango	Situruturu	17	53	599	20	03	960
Kavango	Situruturu	17	53	610	20	03	998
Kavango	Situruturu	17	53	594	20	04	082
Kavango	Situruturu	17	53	604	20	04	229
Kavango	Situruturu	17	53	606	20	04	373
Kavango	Situruturu	17	53	541	20	04	505
Kavango	Situruturu	17	53	516	20	04	521
Kavango	Situruturu	17	53	493	20	04	312
Kavango	Situruturu	17	53	482	20	04	259
Kavango	Situruturu	17	53	482	20	04	190
Kavango	Situruturu	17	53	502	20	04	131
Kavango	Situruturu	17	53	510	20	04	058



Kavango	Situruturu	17	53	506	20	04	001
Kavango	Situruturu	17	53	496	20	03	945
Kavango	Situruturu	17	53	466	20	03	881
Kavango	Situruturu	17	53	400	20	03	808
Kavango	Situruturu	17	53	386	20	03	773
Kavango	Situruturu	17	53	355	20	03	745
Kavango	Situruturu	17	53	333	20	03	738
Kavango	Situruturu	17	53	199	20	03	596
Kavango	Situruturu	17	53	247	20	03	548
Kavango	Situruturu	17	53	263	20	03	518
Kavango	Situruturu	17	53	339	20	03	449
Kavango	Situruturu	17	53	377	20	03	474
Kavango	Situruturu	17	53	400	20	03	463
Kavango	Situruturu	17	53	415	20	03	435
Kavango	Situruturu	17	53	407	20	03	387
Kavango	Situruturu	17	53	430	20	03	343
Kavango	Situruturu	17	53	443	20	03	275
Kavango	Situruturu	17	53	494	20	03	206



Figure 6: The boundary of the Situruturu Fisheries Reserve in the Joseph Mbambangandu Conservancy, Kavango River. (Perimeter 5.43km) (© 2018 Google LLC.).

## 2.7 GPS Coordinates and image of Mashogi Fisheries Reserve

WGS 84 GPS units		hddd mm.mmm'					
		South			East		
		Degrees (°)	Minutes	Seconds (")	Degrees	Minutes	Seconds (")
Kavango	Mashogi	17	54	295	20	04	400
Kavango	Mashogi	17	54	299	20	04	422
Kavango	Mashogi	17	54	303	20	04	431
Kavango	Mashogi	17	54	309	20	04	447
Kavango	Mashogi	17	54	314	20	04	467
Kavango	Mashogi	17	54	315	20	04	477

Kavango	Mashogi	17	54	321	20	04	492
Kavango	Mashogi	17	54	320	20	04	498
Kavango	Mashogi	17	54	326	20	04	521
Kavango	Mashogi	17	54	336	20	04	547
Kavango	Mashogi	17	54	336	20	04	561
Kavango	Mashogi	17	54	340	20	04	570
Kavango	Mashogi	17	54	346	20	04	578
Kavango	Mashogi	17	54	345	20	04	585
Kavango	Mashogi	17	54	339	20	04	588
Kavango	Mashogi	17	54	334	20	04	581
Kavango	Mashogi	17	54	325	20	04	562
Kavango	Mashogi	17	54	308	20	04	527
Kavango	Mashogi	17	54	297	20	04	501
Kavango	Mashogi	17	54	282	20	04	469
Kavango	Mashogi	17	54	271	20	04	453
Kavango	Mashogi	17	54	260	20	04	440
Kavango	Mashogi	17	54	253	20	04	434
Kavango	Mashogi	17	54	266	20	04	433
Kavango	Mashogi	17	54	276	20	04	429
Kavango	Mashogi	17	54	283	20	04	421
Kavango	Mashogi	17	54	285	20	04	411

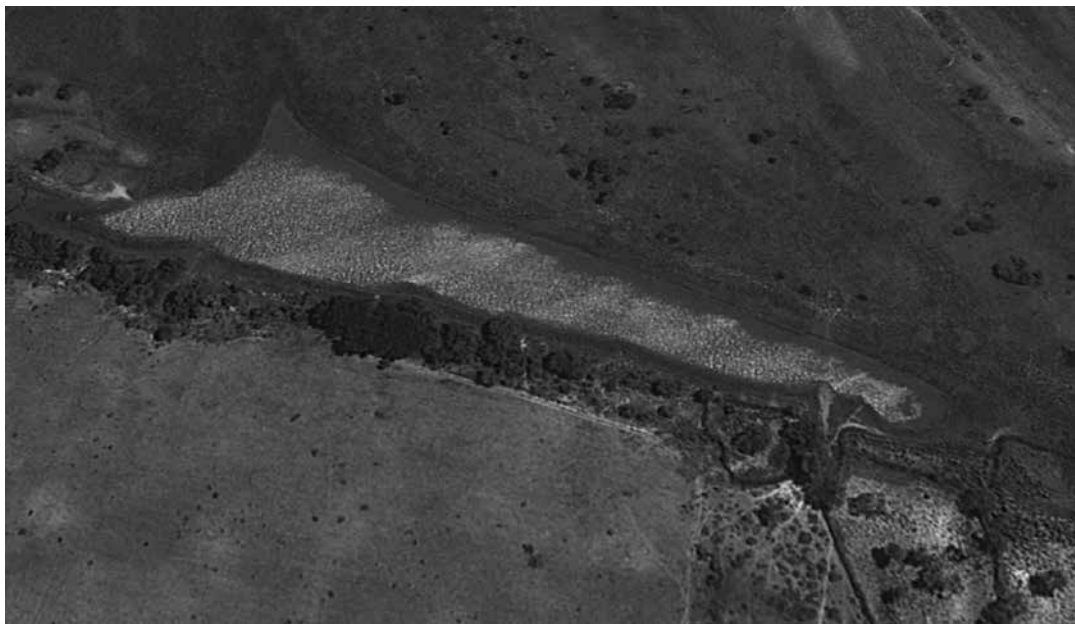


Figure 7: The boundary of the Mashogi Fisheries Reserve in the Joseph Mbambangandu Conservancy, Kavango River. (Perimeter 0.78km) (© 2018 Google LLC.).

## 2.8 GPS Coordinates and image of Sayipundu Fisheries Reserve

WGS 84 GPS units		hddd mm.mmm'					
		South			East		
		Degrees (°)	Minutes	Seconds ( <sup>o</sup> )	Degrees	Minutes	Seconds ( <sup>o</sup> )
Kavango	Sayipundu	17	53	469	20	04	849
Kavango	Sayipundu	17	53	499	20	04	792

Kavango	Sayipundu	17	53	494	20	04	765
Kavango	Sayipundu	17	53	491	20	04	755
Kavango	Sayipundu	17	53	499	20	04	747
Kavango	Sayipundu	17	53	505	20	04	733
Kavango	Sayipundu	17	53	520	20	04	755
Kavango	Sayipundu	17	53	530	20	04	755
Kavango	Sayipundu	17	53	559	20	04	804
Kavango	Sayipundu	17	53	587	20	04	865
Kavango	Sayipundu	17	53	622	20	04	941
Kavango	Sayipundu	17	53	637	20	04	981
Kavango	Sayipundu	17	53	641	20	04	999
Kavango	Sayipundu	17	53	643	20	05	020
Kavango	Sayipundu	17	53	635	20	05	046
Kavango	Sayipundu	17	53	622	20	05	079
Kavango	Sayipundu	17	53	616	20	05	102
Kavango	Sayipundu	17	53	617	20	05	118
Kavango	Sayipundu	17	53	631	20	05	150
Kavango	Sayipundu	17	53	630	20	05	186
Kavango	Sayipundu	17	53	633	20	05	211



Figure 8: The boundary of the Sayipundu Fisheries Reserve in the Joseph Mbambangandu Conservancy, Kavango River. (Perimeter 1.87km) (© 2018 Google LLC.).

**3. Specific fishing activities permitted in Shampendje, Ngemba, Sharudiva, Kanyeva, Shirudishagove, Shamange, Situruturu, Mashogi, Sayipundu and Kavango River mainstream Fisheries Reserves**

- (1) Only the following fishing gear types will be allowed in the Fisheries Reserves -
- (a) traps (vintunga and vikuku);
  - (b) hook and line;
  - (c) rod and reel; or

- (d) multifilament gillnets as passive gears with mesh sizes three and four inch.
- (2) A person who intends to fish in these Fisheries Reserves must first get permission that is valid for one year from the Inland Fisheries Committee which will be registered.
- (3) A person who does not reside in the Joseph Mbanbangandu Conservancy but wants to fish in these Fisheries Reserves must get permission from the Inland Fisheries Committee and pay a fee of N\$300 per fishing gear that is valid for two weeks to fish in these Fisheries Reserves.
- (4) Angling clubs holding fishing competitions must get permission from the Inland Fisheries Committee and pay a fee of N\$1000 to allow competitors to fish within these Fisheries Reserves for the duration of that competition.
- (5) A person may not use drag netting and lights to assist with fishing.
- (6) Cattle are allowed to drink water at these Fisheries Reserves.
- (7) A person must get permission from the Inland Fisheries Committee to harvest any vegetation or animal from these Fisheries Reserves.
- (8) An activity that may negatively impact or compromise on the integrity of the ecosystem is not allowed.
-