



DIE PROVINSIE TRANSCVAAL
Guitengewone
Offisiële Koerant.

(As 'n Nuusblad by die Poskantoor. Geregistreer)



THE PROVINCE OF TRANSCVAAL
Official Gazette
Extraordinary.

(Registered at the Post Office as a Newspaper)

'VOL CLXVIII.] PRYS 6d. PRETORIA, 11 FEBRUARIE 1959. PRICE 6d. [No. 2751.

No. 14 (Administrateurs-), 1959.]

PROKLAMASIE

DEUR SY EDELE DIE ADMINISTRATEUR VAN DIE
 PROVINSIE TRANSCVAAL.

Nademaal daar by paragraaf (d) van artikel elf van die Wildordonnansie, 1949 (Ordonnansie No. 23 van 1949), soos gewysig, bepaal word dat die Administrateur van tyd tot tyd, na verwysing na die Raad van Advies insake Fauna en Flora, by Proklamasie in die *Staatskoerant* 'n omskrewe gebied tot 'n wildreserwe kan verklaar;

En nademaal daar by paragraaf (a) van subartikel (2) van artikel twee van die Ordonnansie op die Beskerming van Inheemse Flora, 1940 (Ordonnansie No. 9 van 1940), soos gewysig, bepaal word dat die Administrateur van tyd tot tyd, by Proklamasie in die *Offisiële Koerant van die Provinsie Transvaal* een of meer reserwes vir inheemse flora kan instel;

So is dit dat ek, kragtens en ingevolge voornoemde bevoegdhede, en na verwysing na genoemde Raad, hierby verklaar dat die gebiede in die Bylae by hierdie Proklamasie omskryf, voortaan wildreserwes en reserwes vir inheemse flora is waarop die bepalinge van genoemde Ordonnansies van toepassing is, en dat genoemde reserwes bekend sal staan onder die onderskeie name soos in genoemde Bylae uiteengesit.

GOD BEHOEDE DIE KONINGIN.

Gegee onder my Hand te Pretoria, op hede die Twee-en-twintigste dag van Desember Eenduisend Negeehonderd Agt-en-vyftig.

F. H. ODENDAAL,
 Administrateur van die Provinsie Transvaal.
 F.F. 42.

M'NANDI-PRIVAATNATUURRESERVAAT, DISTRIKTE BRITS
 EN PRETORIA.
 (Grootte: 501 morg.)

Beginnende by die suidwestelike baken (middel van spruit) van die resterende gedeelte van gedeelte van die plaas Krelings Post No. 66 (Gedeelte 12 uitgesluit); vandaar in 'n noordoostelike, noordwestelike rigting langs die westelike grens en met inbegrip van die resterende gedeelte van gedeelte van die plaas Krelings Post No. 66 tot by die noordwestelike baken daarvan; vandaar in 'n noordoostelike, oostelike rigting langs die noordelike grens en met inbegrip van die resterende gedeelte van gedeelte van die plaas Krelings Post No. 66 tot by die noordoostelike baken daarvan; vandaar in 'n westelike, suidoostelike, suidwestelike rigting langs die noordelike en oostelike grense en met inbegrip van die resterende gedeelte van gedeelte van die plaas Krelings Post No. 66 tot by die noordoostelike baken van Gedeelte 94 van die plaas Vissershoeck No. 45; vandaar in 'n suidelike rigting langs die oostelike grens en met inbegrip van Gedeelte 94 van die plaas Vissershoeck No. 45 tot by die suidoostelike baken daarvan; vandaar in 'n westelike, noordelike, noordwestelike, noordoostelike rigting langs die suidelike grens.

No. 14 (Administrator's), 1959.]

PROCLAMATION

BY THE HONOURABLE THE ADMINISTRATOR OF THE
 PROVINCE OF TRANSCVAAL.

Whereas it is provided in paragraph (d) of section eleven of the Game Ordinance, 1949 (Ordinance No. 23 of 1949), as amended, that the Administrator may, from time to time, after reference to the Fauna and Flora Advisory Board, by Proclamation in the *Gazette*, declare any defined area to be a game reserve;

And whereas it is provided in paragraph (a) of subsection (2) of section two of the Native Flora Protection Ordinance, 1940 (Ordinance No. 9 of 1940), as amended, that the Administrator may from time to time, by Proclamation in the *Provincial Gazette of the Province of Transvaal* establish one or more native flora reserves;

Now, therefore, under and by virtue of the aforesaid powers, and after reference to the said Board, I do hereby declare that the areas defined in the Schedule to this Proclamation shall henceforth be game reserves and native flora reserves; to which the provisions of the said Ordinances shall apply, and that the said reserves shall be known by the respective names set out in the said Schedule.

GOD SAVE THE QUEEN.

Given under my Hand at Pretoria on this Twenty-second day of December, One thousand Nine hundred and Fifty-eight.

F. H. ODENDAAL,
 Administrator of the Province of Transvaal.
 F.F. 42.

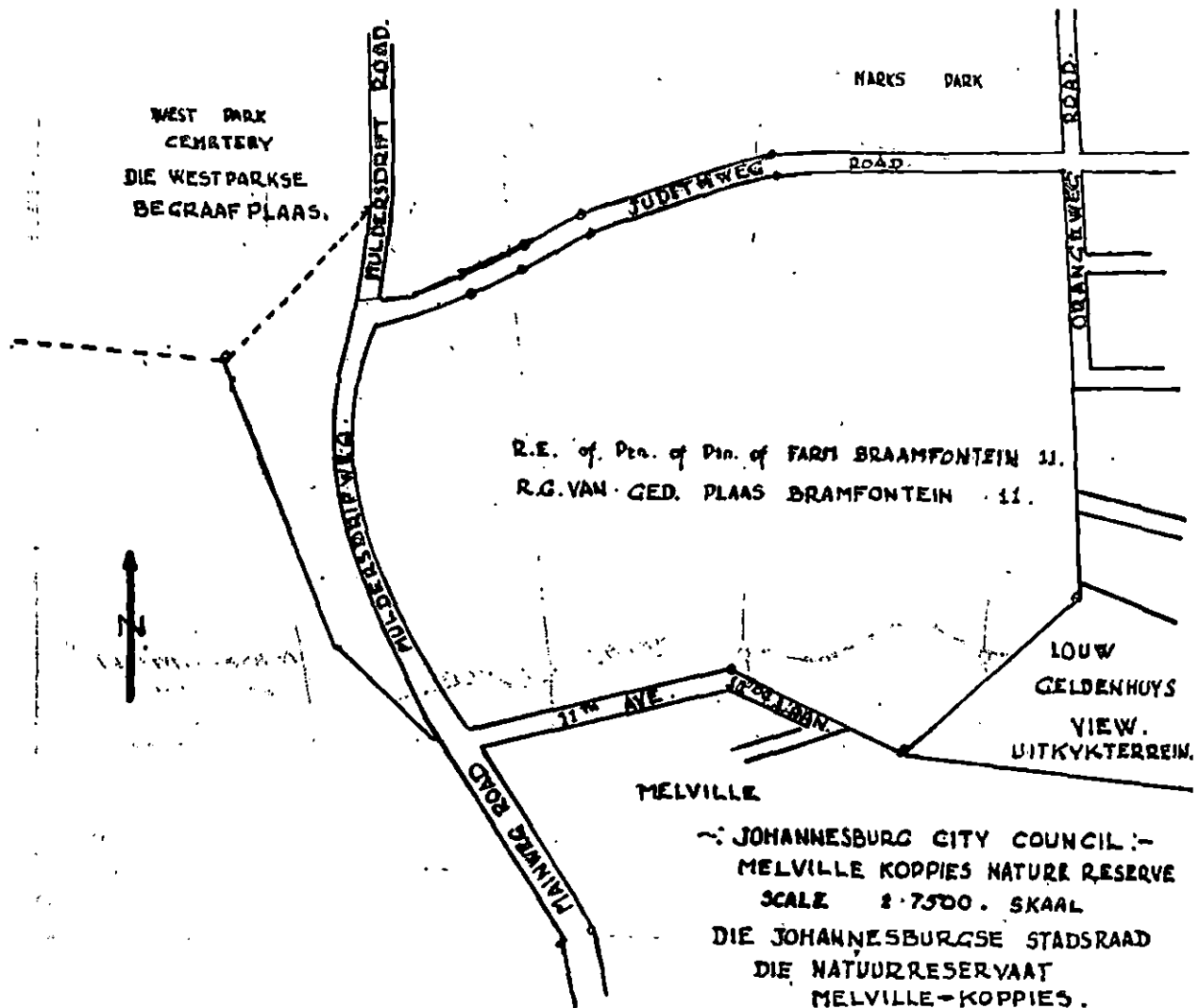
M'NANDI PRIVATE NATURE RESERVE, DISTRICTS OF
 BRITS AND PRETORIA.
 (Extent: 501 morgen.)

Commencing at the south-western beacon (midstream spruit) of the remaining extent of portion of the farm Krelings Post No. 66 (excluding Portion 12); thence in a north-easterly, north-westerly direction along the western boundary of and including the remaining extent of portion of the farm Krelings Post No. 66 to the north-western beacon thereof; thence in a north-easterly, easterly direction along the northern boundary of and including the remaining extent of portion of the farm Krelings Post No. 66 to the north-eastern beacon thereof; thence in a westerly, south-easterly, south-westerly direction along the northern and eastern boundaries of and including the remaining extent of portion of the farm Krelings Post No. 66 to the north-eastern beacon of Portion 94 of the farm Vissershoeck No. 45; thence in a southerly direction along the eastern boundary of and including Portion 94 of the farm Vissershoeck No. 45 to the south-eastern beacon thereof; thence in a westerly, northerly, north-westerly, north-easterly direction along the southern boundary of

begraafplaas tot by 'n punt waar genoemde heining by die westelike grens van Muldersdriftweg aansluit; vandaar 440 Kaapse voet ver in 'n suidelike rigting; vandaar ongeveer 460 Kaapse voet ver in 'n oostelike rigting oor genoemde Muldersdriftweg tot by 'n baken op die suidelike grens van Judithweg, en dan verder in 'n oostelike rigting, ongeveer 2,150 Kaapse voet ver al met hierdie grens langs tot by die aanvangspunt. Muldersdriftweg wat oor hierdie eiendom loop, is nie by hierdie beskrywing ingesluit nie.

approximately 700 Cape feet to a point where the said fencing meets the western boundary of the Muldersdrift Road; thence in a southerly direction for a distance of 440 Cape feet; thence in an easterly direction across the said Muldersdrift Road for a distance of approximately 460 Cape feet to a beacon on the southern boundary of Judith Road, and continuing in an easterly direction along this boundary for a distance of approximately 2,150 Cape feet and terminating at the point where this description commenced. The Muldersdrift Road which passes through this property is not included in this description.

**MELVILLE KOPPIES-NATUURRESERVAAT.
MELVILLE KOPPIES NATURE RESERVE.**



**SOLOMON-PRIVAATNATUURRESERVAAT, DISTRIK
LETABA.
(Grootte: 20,086 morg.)**

Beginnende by die suidwestelike baken van die plaas Glip No. 207; vandaar in 'n noordoostelike, noordwestelike rigting langs die westelike grens en met inbegrip van die plaas Glip No. 207 en Breakfast No. 190 tot by die noordwestelike baken van laasgenoemde plaas; vandaar in 'n noordoostelike, suidoostelike rigting langs die noordelike grens en met inbegrip van die plaas Breakfast No. 190, Brook No. 191 en Ziek No. 192 tot by die noordoostelike baken van laasgenoemde plaas; vandaar in 'n suidoostelike, suidwestelike rigting langs die oostelike grens en met inbegrip van die plaas Ziek No. 192 tot by die suidoostelike baken (middel van Selatirivier) daarvan; vandaar in 'n suidoostelike rigting langs 'n denkbeeldige lyn in die middel van die Selatirivier en met inbegrip van die plaas Ram No. 205 tot by 'n baken (middel van Selatirivier); vandaar in 'n suidelike rigting langs die oostelike grens en met inbegrip van die plaas Ram No. 205 tot by die suidoostelike baken daarvan; vandaar in

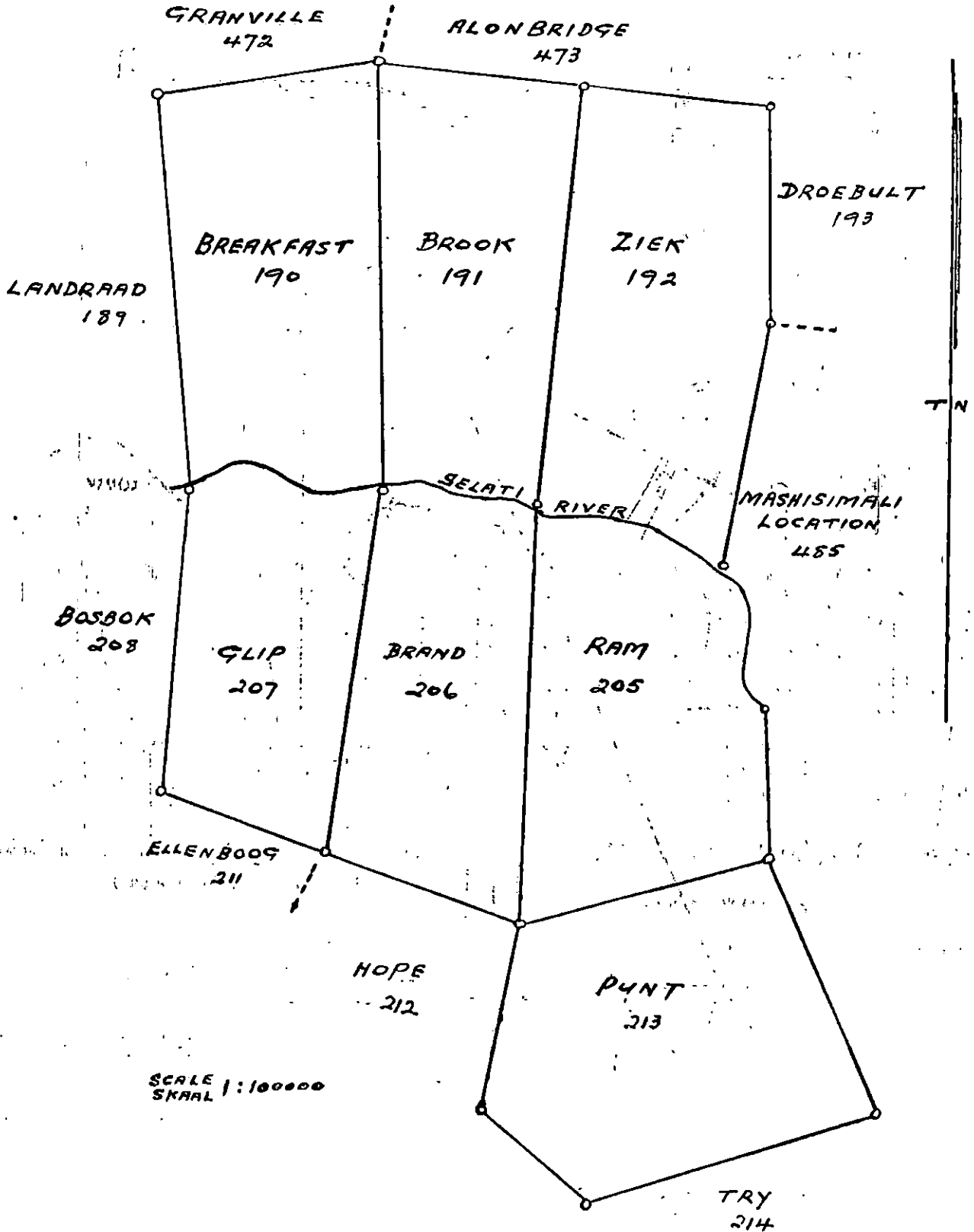
**SOLOMON PRIVATE NATURE RESERVE, DISTRICT OF LETABA.
(Extent: 20,086 morgen.)**

Commencing at the south-western beacon of the farm Glip No. 207; thence in a north-easterly, north-westerly direction along the western boundary of and including the farms Glip No. 207 and Breakfast No. 190 to the north-western beacon of the last-named farm; thence in a north-easterly, south-easterly direction along the northern boundary of and including the farms Breakfast No. 190, Brook No. 191 and Ziek No. 192 to the north-eastern beacon of the last-named farm; thence in a south-easterly, south-westerly direction along the eastern boundary of and including the farm Ziek No. 192 to the south-eastern beacon (midstream Selati River) thereof; thence in a south-easterly direction along an imaginary line in the middle of the Selati River and including the farm Ram No. 205 to a beacon (midstream Selati River); thence in a southerly direction along the eastern boundary of and including the farm Ram No. 205 to the south-eastern beacon thereof; thence in a south-easterly direction along

'n suidoostelike rigting langs die oostelike grens en met inbegrip van die plaas Punt No. 213 tot by die suidoostelike baken daarvan; vandaar in 'n suidwestelike rigting langs die suidelike grens en met inbegrip van die plaas Punt No. 213 tot by die suidelike baken daarvan; vandaar in 'n noordwestelike, noordoostelike rigting langs die oostelike grens en met inbegrip van die plaas Punt No. 213 tot by die noordwestelike baken daarvan; vandaar in 'n noordwestelike rigting langs die suidelike grens en met inbegrip van die plase Brand No. 206 en Glip No. 207 tot by die suidwestelike baken van laasgenoemde plaas, die aanvangspunt.

the eastern boundary of and including the farm Punt No. 213 to the south-eastern beacon thereof; thence in a south-westerly direction along the southern boundary of and including the farm Punt No. 213 to the southern beacon thereof; thence in a north-westerly, north-easterly direction along the eastern boundary of and including the farm Punt No. 213 to the north-western beacon thereof; thence in a north-westerly direction along the southern boundary of and including the farms Brand No. 206 and Glip No. 207 to the south-western beacon of the last-named farm, the point of commencement.

**SOLOMON-PRIVAATNATUURRESERVAAT.
SOLOMON PRIVATE NATURE RESERVE.**



DE HOOP-PRIVAATNATUURRESERVAAT, DISTRIK LYDENBURG.
(Grootte: 3,363 morg.)

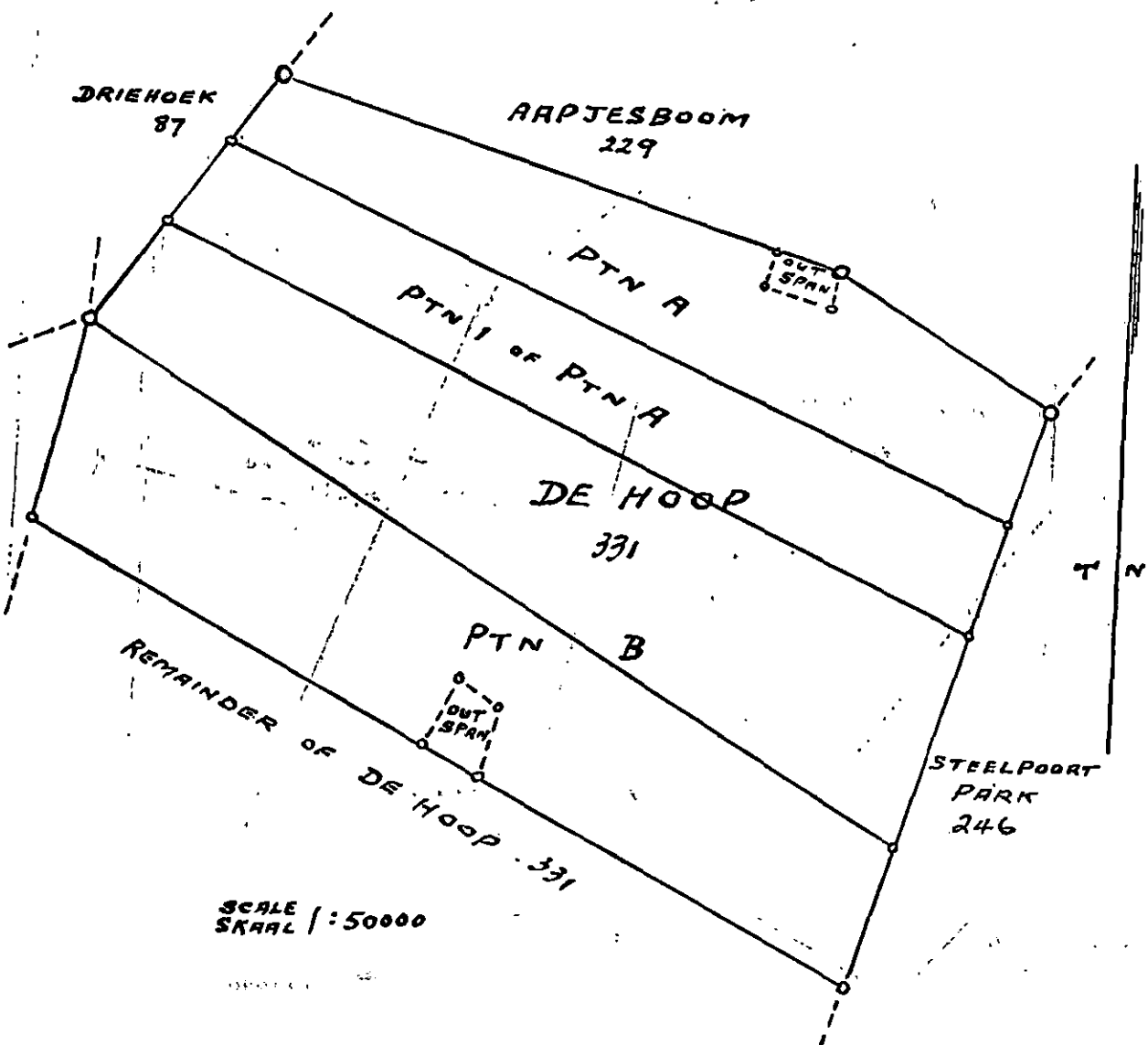
Beginnende by die suidwestelike baken van Gedeelte B van die plaas De Hoop No. 331; vandaar in 'n noordoostelike, noordoostelike rigting langs die westelike grens en met inbegrip van Gedeelte B, Gedeelte 1 van Gedeelte A en Gedeelte A van die plaas De Hoop No. 331 tot by die noordwestelike baken van die plaas; vandaar in 'n suidoostelike rigting langs die noordelike grens en met inbegrip van bogenoemde gedeeltes tot by die noordoostelike baken van die plaas De Hoop No. 331; vandaar in 'n suidwestelike rigting langs die oostelike grens en met inbegrip van bogenoemde gedeeltes tot by die suidoostelike baken van Gedeelte B van die plaas De Hoop No. 331; vandaar in 'n noordwestelike rigting langs die suidelike grens van Gedeelte B van die plaas De Hoop No. 331 tot by die suidwestelike baken van laasgenoemde gedeelte, die aanvangspunt.

DE HOOP PRIVATE NATURE RESERVE, DISTRICT OF LYDENBURG.

(Extent: 3,363 morgen.)

Commencing at the south-western beacon of Portion B of the farm De Hoop No. 331; thence in a north-easterly, north-easterly direction along the western boundary of and including Portion B, Portion 1 of Portion A and Portion A of the farm De Hoop No. 331 to the north-western beacon of the farm; thence in a south-easterly direction along the northern boundary of and including the above-named portions to the north-eastern beacon of the farm De Hoop No. 331; thence in a south-westerly direction along the eastern boundary of and including the above-named portions to the south-eastern beacon of Portion B of the farm De Hoop No. 331; thence in a north-westerly direction along the southern boundary of Portion B of the farm De Hoop No. 331 to the south-western beacon of the last-named portion, the point of commencement.

**DE HOOP-PRIVAATNATUURRESERVAAT.
DE HOOP PRIVATE NATURE RESERVE.**



WELDÉRE-PRIVAATNATUURRESERVAAT, DISTRIK MARICO.
(Grootte: 12,825 morg.)

Beginnende by die suidwestelike baken van die plaas Weltevreden No. 45; vandaar in 'n noordwestelike, noordelike rigting langs die westelike grens en met inbegrip van die plaas Weltevreden No. 45 en die plaas Mooigenoeg No. 312 tot by die noordwestelike baken van laasgenoemde plaas; vandaar in 'n noordoostelike rigting langs die noordelike grens en met inbegrip van die plaas Mooigenoeg No. 312 en die resterende gedeelte van die

WELDÉRE PRIVATE NATURE RESERVE, DISTRICT OF MARICO.

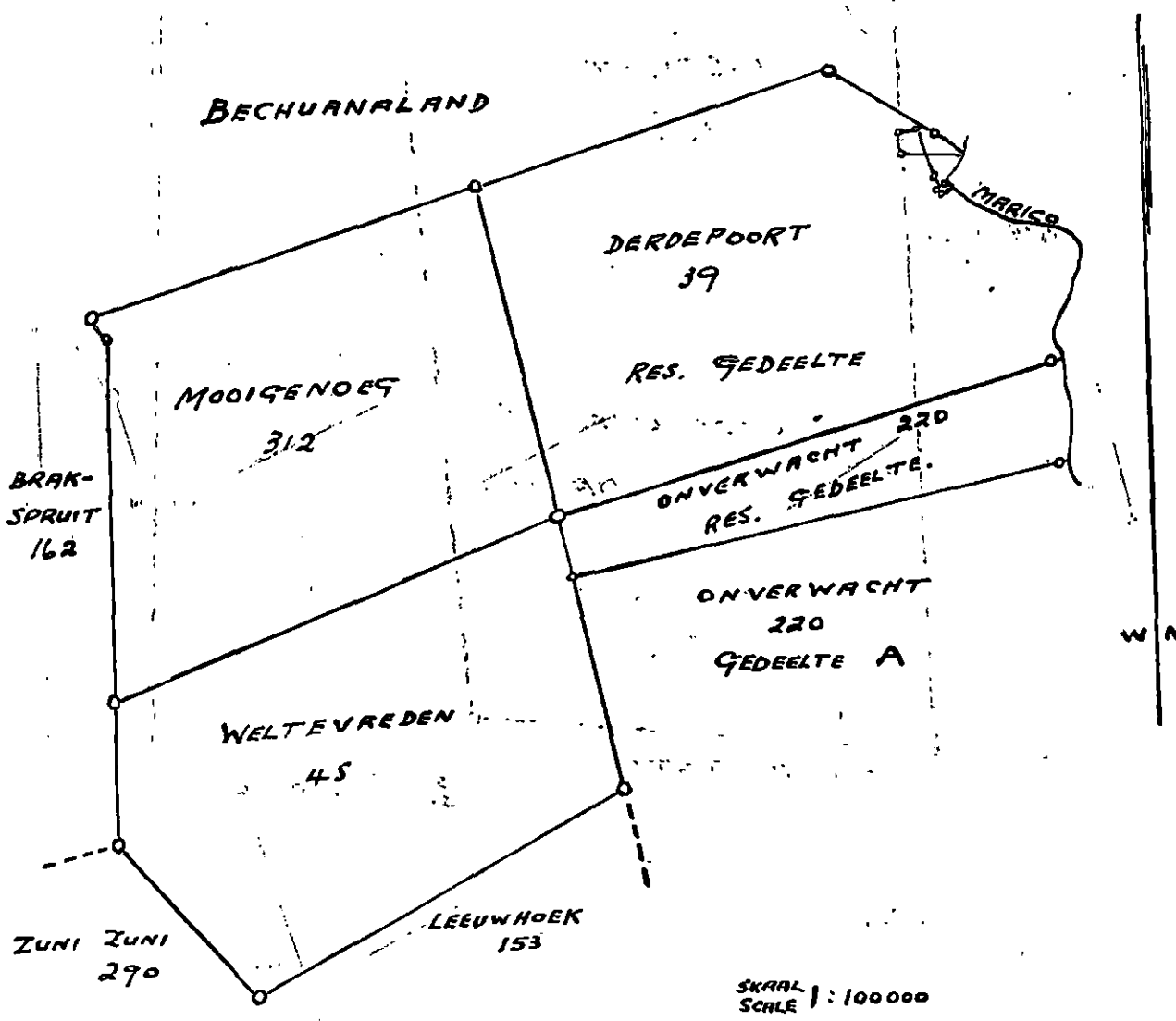
(Extent: 12,825 morgen.)

Commencing at the south-western beacon of the farm Weltevreden No. 45; thence in a north-westerly, northerly direction along the western boundary of and including the farm Weltevreden No. 45 and the farm Mooigenoeg No. 312 to the north-western beacon of the last-named farm; thence in a north-easterly direction along the northern boundary of and including the farm Mooigenoeg No. 312 and the remaining extent of the farm Derde-

plaas Derdepoort No. 39 tot by die noordelike baken van laasgenoemde plaas; vandaar in 'n suidoostelike rigting langs die noordelike grens en met inbegrip van die resterende gedeelte van die plaas Derdepoort No. 39 tot by die noordoostelike baken (middel van Maricorivier) daarvan; vandaar in 'n suidoostelike, suidelike rigting langs 'n denkbeeldige lyn in die middel van die Maricorivier en met inbegrip van die resterende gedeelte van die plaas Derdepoort No. 39 en die resterende gedeelte van die plaas Onverwacht No. 220 tot by die suidoostelike baken (middel van Maricorivier) van laasgenoemde plaas; vandaar in 'n suidwestelike rigting langs die suidelike grens en met inbegrip van die resterende gedeelte van die plaas Onverwacht No. 220 tot by die suidwestelike baken daarvan; vandaar in 'n suidoostelike rigting langs die oostelike grens en met inbegrip van die plaas Weltevreden No. 45 tot by die suidoostelike baken daarvan; vandaar in 'n suidwestelike rigting langs die suidelike grens en met inbegrip van die plaas Weltevreden No. 45 tot by die suidwestelike baken daarvan, die aanvangspunt.

poort No. 39 to the northern beacon of the last-named farm; thence in a south-easterly direction along the northern boundary of and including the remaining extent of the farm Derdepoort No. 39 to the north-eastern beacon (midstream Marico River) thereof; thence in a south-easterly, southerly direction along an imaginary line in the middle of the Marico River and including the remaining extent of the farm Derdepoort No. 39 and the remaining extent of the farm Onverwacht No. 220 to the south-eastern beacon (midstream Marico River) of the last-named farm; thence in a south-westerly direction along the southern boundary of and including the remaining extent of the farm Onverwacht No. 220 to the south-western beacon thereof; thence in a south-easterly direction along the eastern boundary of and including the farm Weltevreden No. 45 to the south-eastern beacon thereof; thence in a south-westerly direction along the southern boundary of and including the farm Weltevreden No. 45 to the south-western beacon thereof, the point of commencement.

**WELDERE-PRIVAATNATUURRESERVAAT.
WELDERE PRIVATE NATURE RESERVE.**



PIENAAR-PRIVAATNATUURRESERVAAT, DISTRIK MARICO.
(Grootte: 2,739 morg.)

PIENAAR PRIVATE NATURE RESERVE, DISTRICT OF MARICO.
(Extent: 2,739 morgen.)

Beginnende by die suidwestelike baken van sekere gedeelte van die plaas Rietgat No. 197; vandaar in 'n noordelike rigting langs die westelike grens en met inbegrip van sekere gedeelte van die plaas Rietgat No. 197 tot by die noordwestelike baken daarvan; vandaar in 'n oostelike rigting langs die noordelike grens en met inbegrip van sekere gedeelte van die plaas Rietgat No. 197 tot by die noordoostelike baken daarvan; vandaar in

Commencing at the south-western beacon of certain portion of the farm Rietgat No. 197; thence in a northerly direction along the western boundary of and including certain portion of the farm Rietgat No. 197 to the north-western beacon thereof; thence in an easterly direction along the northern boundary of and including certain portion of the farm Rietgat No. 197 to the north-eastern beacon thereof; thence in a southerly direction along the

suidoostelike rigting langs die noordelike grens en met inbegrip van die resterende gedeelte van Gedeelte A van die plaas Nooitgedacht No. 59 tot by die noordoostelike baken daarvan; vandaar in 'n suidelike rigting langs die oostelike grens en met inbegrip van die resterende gedeelte van Gedeelte A van die plaas Nooitgedacht No. 59 tot by die suidoostelike baken daarvan; vandaar in 'n noordwestelike rigting langs die suidelike grens en met inbegrip van die resterende gedeelte van Gedeelte A van die plaas Nooitgedacht No. 59 tot by die suidwestelike baken (middel van Hartsrivier) daarvan, die aanvangspunt.

MARICOSTROOM-PRIVAATNATUURRESERVAAT, DISTRIK
RUSTENBURG.

(Grootte: 1,855 morg.)

Beginnende by die suidwestelike baken van die plaas Marico Stroom No. 77; vandaar in 'n noordwestelike rigting langs die westelike grens en met inbegrip van die plaas Marico Stroom No. 77 tot by die noordwestelike baken (middel van Maricorivier) daarvan; vandaar in 'n noordoostelike rigting langs 'n denkbeeldige lyn in die middel van die Maricorivier en met inbegrip van die plaas Marico Stroom No. 77 tot by die noordoostelike baken (middel van Maricorivier) daarvan; vandaar in 'n suidoostelike rigting langs die oostelike grens en met inbegrip van die plaas Marico Stroom No. 77 tot by die suidoostelike baken daarvan; vandaar in 'n suidwestelike rigting langs die suidwestelike grens en met inbegrip van die plaas Marico Stroom No. 77 tot by die suidwestelike baken daarvan, die aanvangspunt.

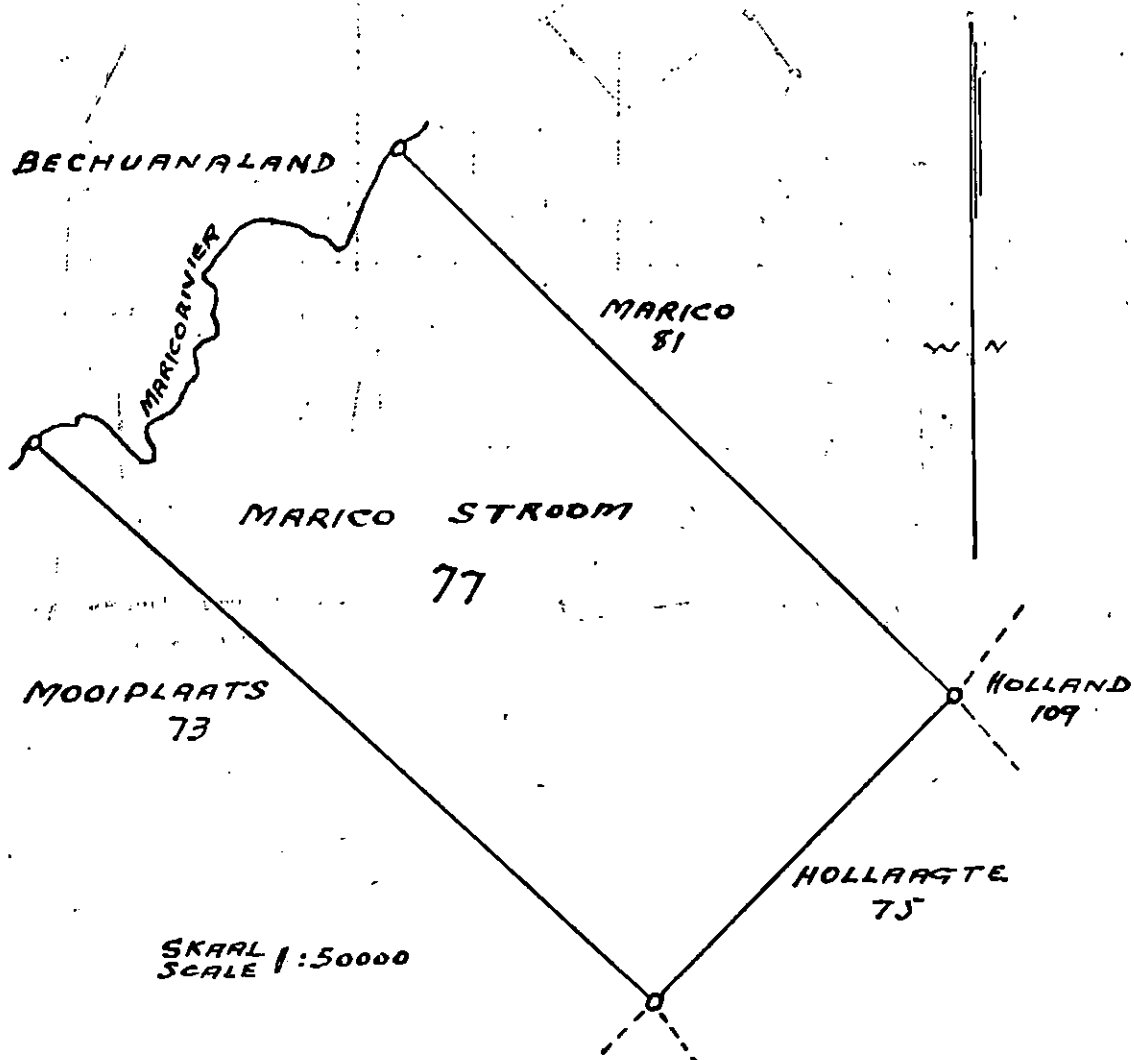
along the northern boundary of and including the remaining extent of Portion A of the farm Nooitgedacht No. 59 to the north-eastern beacon thereof; thence in a southerly direction along the eastern boundary of and including the remaining extent of Portion A of the farm Nooitgedacht No. 59 to the south-eastern beacon thereof; thence in a north-westerly direction along the southern boundary of and including the remaining extent of Portion A of the farm Nooitgedacht No. 59 to the south-western beacon (midstream Harts River) thereof, the point of commencement.

MARICOSTROOM PRIVATE NATURE RESERVE, DISTRICT
OF RUSTENBURG.

(Extent: 1,855 morgen.)

Commencing at the south-western beacon of the farm Marico Stroom No. 77; thence in a north-westerly direction along the western boundary of and including the farm Marico Stroom No. 77 to the north-western beacon (midstream Marico River) thereof; thence in a north-easterly direction along an imaginary line in the middle of the Marico River and including the farm Marico Stroom No. 77 to the north-eastern beacon (midstream Marico River) thereof; thence in a south-easterly direction along the eastern boundary of and including the farm Marico Stroom No. 77 to the south-eastern beacon thereof; thence in a south-westerly direction along the south-western boundary of and including the farm Marico Stroom No. 77 to the south-western beacon thereof, the point of commencement.

MARICOSTROOM-PRIVAATNATUURRESERVAAT.
MARICOSTROOM PRIVATE NATURE RESERVE.



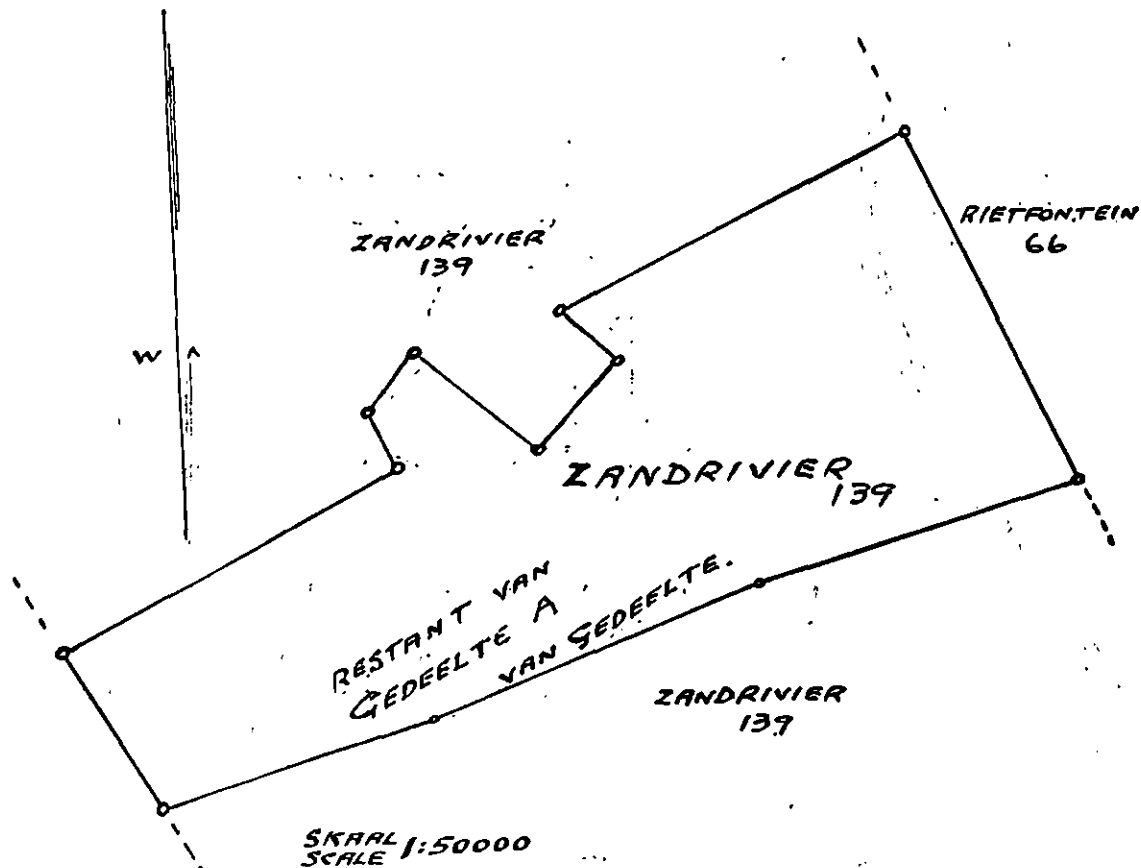
KUSCHKE-NATUURRESERVAAT, DISTRIK PIETERSBURG.
(Grootte: 1,427 morg.)

Beginnende by die suidwestelike baken van die resterende gedeelte van Gedeelte A van gedeelte van die plaas Zandrivier No. 139; vandaar in 'n noordwestelike rigting langs die westelike grens en met inbegrip van die resterende gedeelte van Gedeelte A van gedeelte van die plaas Zandrivier No. 139 tot by die noordwestelike baken daarvan; vandaar in 'n noordoostelike, noordwestelike, noordoostelike, suidoostelike, noordoostelike, noordwestelike, noordoostelike rigting langs die noordelike grens en met inbegrip van die resterende gedeelte van Gedeelte A van gedeelte van die plaas Zandrivier No. 139 tot by die noordoostelike baken daarvan; vandaar in 'n suidoostelike rigting langs die oostelike grens en met inbegrip van die resterende gedeelte van Gedeelte A van gedeelte van die plaas Zandrivier No. 139 tot by die suidoostelike baken daarvan; vandaar in 'n suidwestelike rigting langs die suidelike grens en met inbegrip van die resterende gedeelte van Gedeelte A van gedeelte van die plaas Zandrivier No. 139 tot by die suidwestelike baken daarvan, die aanvangspunt.

KUSCHKE NATURE RESERVE, DISTRICT OF PIETERSBURG.
(Extent: 1,427 morgen.)

Commencing at the south-western beacon of the remaining extent of Portion A of portion of the farm Zandrivier No. 139; thence in a north-westerly direction along the western boundary of and including the remaining extent of Portion A of portion of the farm Zandrivier No. 139 to the north-western beacon thereof; thence in a north-easterly, north-westerly, north-easterly, south-easterly, north-easterly, north-westerly, north-easterly direction along the northern boundary of and including the remaining extent of Portion A of portion of the farm Zandrivier No. 139 to the north-eastern beacon thereof; thence in a south-easterly direction along the eastern boundary of and including the remaining extent of Portion A of portion of the farm Zandrivier No. 139 to the south-eastern beacon thereof; thence in a south-westerly direction along the southern boundary of and including the remaining extent of Portion A of portion of the farm Zandrivier No. 139 to the south-western beacon thereof, the point of commencement.

**KUSCHKE-NATUURRESERVAAT.
KUSCHKE NATURE RESERVE.**



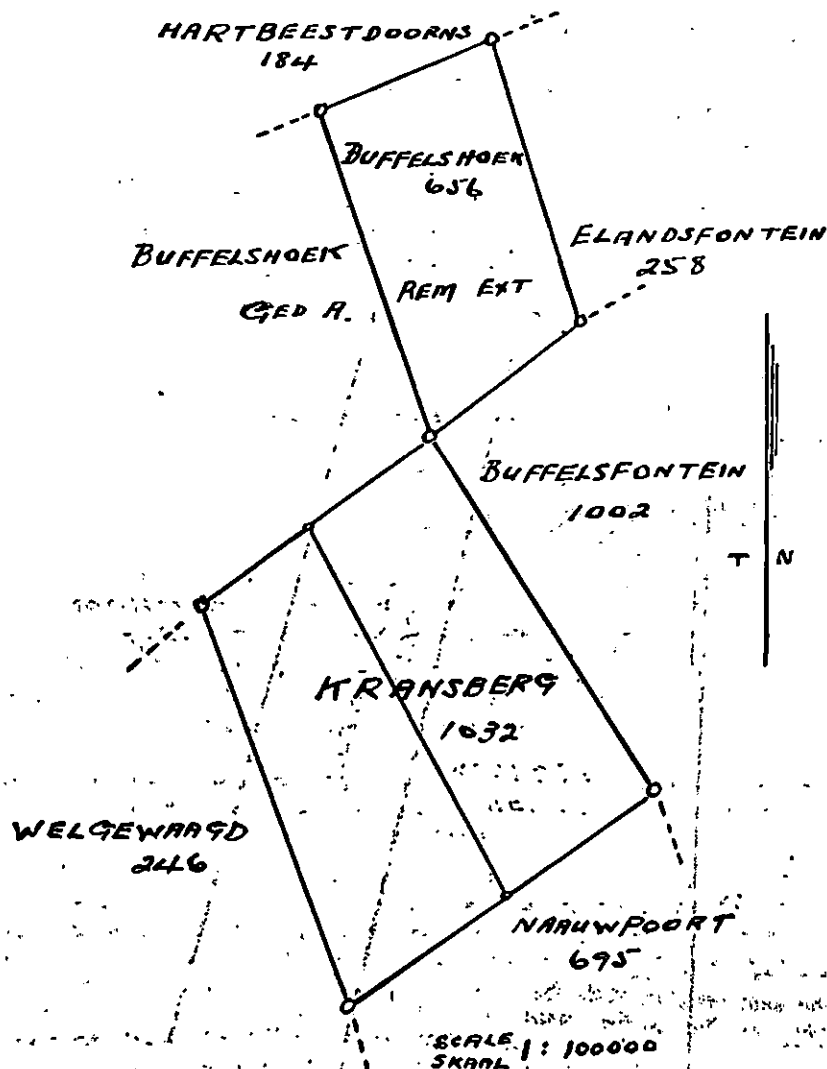
FANA-PRIVAATNATUURRESERVAAT, DISTRIK PRETORIA.
(Grootte: 816 morg.)

Beginnende by die suidwestelike baken van Gedeelte F van gedeelte van die oostelike gedeelte van die plaas Klipdrift No. 123; vandaar in 'n noordwestelike, noordwestelike rigting langs die westelike grens en met inbegrip van Gedeelte F van gedeelte van die oostelike gedeelte van die plaas Klipdrift No. 123 tot by die noordwestelike baken (middel van Pienaarsrivier) daarvan; vandaar in 'n noordoostelike rigting langs 'n denkbeeldige lyn in die middel van die Pienaarsrivier en met inbegrip van Gedeelte F van gedeelte van die oostelike gedeelte en die resterende gedeelte van Gedeelte E van die oostelike gedeelte van die plaas Klipdrift No. 123 tot by die noordelike baken (middel van Pienaarsrivier) van laasgenoemde gedeelte; vandaar in 'n suidoostelike, suidoostelike, suidwestelike rigting langs die oostelike grens en met inbegrip van die resterende gedeelte van Gedeelte E van die ooste-

FANA PRIVATE NATURE RESERVE, DISTRICT OF PRETORIA.
(Extent: 816 morgen.)

Commencing at the south-western beacon of Portion F of portion of the eastern portion of the farm Klipdrift No. 123; thence in a north-westerly, north-westerly direction along the western boundary of and including Portion F of portion of the eastern portion of the farm Klipdrift No. 123 to the north-western beacon (midstream Pienaars River) thereof; thence in a north-easterly direction along an imaginary line in the middle of the Pienaars River and including Portion F of portion of the eastern portion and the remaining extent of Portion E of the eastern portion of the farm Klipdrift No. 123 to the northern beacon (midstream Pienaars River) of the last-named portion; thence in a south-easterly, south-easterly, south-westerly direction along the eastern boundary of and including the remaining extent of Portion E of the eastern portion and

**KNOB'S VALLEY-PRIVAATNATUURRESERVAAT.
KNOB'S VALLEY PRIVATE NATURE RESERVE.**



JACOBS-PRIVAATNATUURRESERVAAT; -DISTRIK
WATERBERG.

(Grootte: 2,608: morg.)

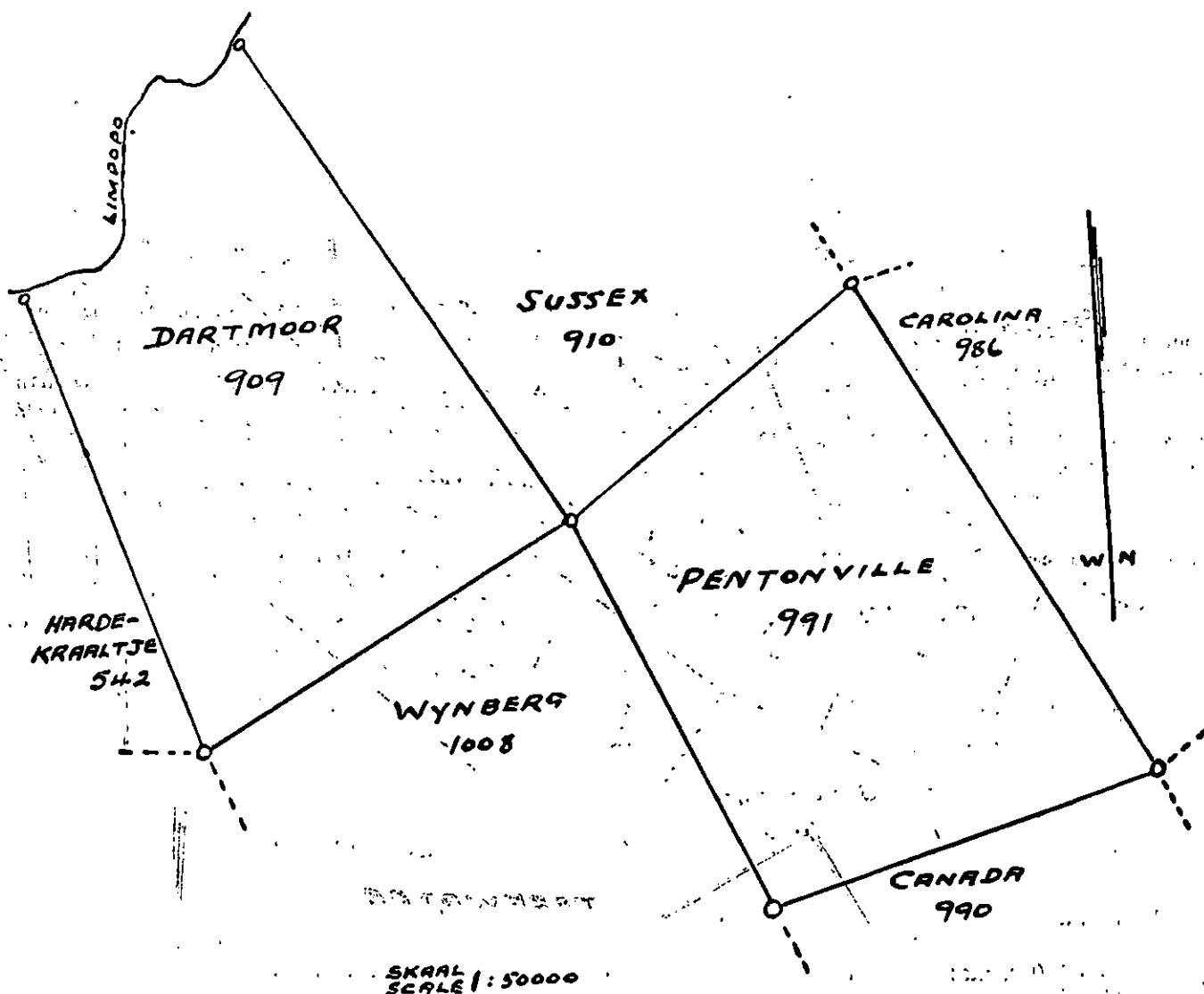
JACOBS PRIVATE NATURE RESERVE, DISTRICT
OF WATERBERG.

(Extent: 2,608: morgen.)

Beginnende by die suidwestelike baken van die plaas Pentonville No. 991; vandaar in 'n noordwestelike rigting langs die westelike grens en met inbegrip van die plaas Pentonville No. 991 tot by die noordwestelike baken daarvan; vandaar in 'n suidwestelike rigting langs die suidelike grens en met inbegrip van die plaas Dartmoor No. 909 tot by die suidwestelike baken daarvan; vandaar in 'n noordwestelike rigting langs die westelike grens en met inbegrip van die plaas Dartmoor No. 909 tot by die noordwestelike baken (middel van Limpoporivier) daarvan; vandaar in 'n noordoostelike rigting langs 'n denkbeeldige lyn in die middel van die Limpoporivier en met inbegrip van die plaas Dartmoor No. 909 tot by die noordoostelike baken (middel van Limpoporivier) daarvan; vandaar in 'n suidoostelike rigting langs die oostelike grens en met inbegrip van die plaas Dartmoor No. 909 tot by die suidoostelike baken daarvan; vandaar in 'n noordoostelike rigting langs die noordelike grens en met inbegrip van die plaas Pentonville No. 991 tot by die noordoostelike baken daarvan; vandaar in 'n suidoostelike rigting langs die oostelike grens en met inbegrip van die plaas Pentonville No. 991 tot by die suidoostelike baken daarvan; vandaar in 'n suidwestelike rigting langs die suidelike grens en met inbegrip van die plaas Pentonville No. 991 tot by die suidwestelike baken daarvan, die aanvangspunt.

Commencing at the south-western beacon of the farm Pentonville No. 991; thence in a north-westerly direction along the western boundary of and including the farm Pentonville No. 991 to the north-western beacon thereof; thence in a south-westerly direction along the southern boundary of and including the farm Dartmoor No. 909 to the south-western beacon thereof; thence in a north-westerly direction along the western boundary of and including the farm Dartmoor No. 909 to the north-western beacon (midstream Limpopo River) thereof; thence in a north-easterly direction along an imaginary line in the middle of the Limpopo River and including the farm Dartmoor No. 909 to the north-eastern beacon (midstream Limpopo River) thereof; thence in a south-easterly direction along the eastern boundary of and including the farm Dartmoor No. 909 to the south-eastern beacon thereof; thence in a north-easterly direction along the northern boundary of and including the farm Pentonville No. 991 to the north-eastern beacon thereof; thence in a south-easterly direction along the eastern boundary of and including the farm Pentonville No. 991 to the south-eastern beacon thereof; thence in a south-westerly direction along the southern boundary of and including the farm Pentonville No. 991 to the south-western beacon thereof, the point of commencement.

**JACOBS-PRIVAATNATUURRESERVAAT.
JACOBS PRIVATE NATURE RESERVE.**



**TIERSCHUTZ-PRIVAATNATUURRESERVAAT, DISTRIK
RUSTENBURG.**
(Grootte: 3,885 morg.)

**TIERSCHUTZ PRIVATE NATURE RESERVE, DISTRICT
OF RUSTENBURG.**
(Extent: 3,885 morgen.)

Beginnende by die suidwestelike baken van die resterende gedeelte van die plaas Vlakplaats No. 108; vandaar in 'n noordwestelike, suidwestelike, noordwestelike rigting langs die westelike grens en met inbegrip van die resterende gedeelte van die plaas Vlakplaats No. 108 tot by die noordwestelike baken daarvan; vandaar in 'n noordoostelike rigting langs die noordelike grens en met inbegrip van die resterende gedeelte van die plaas Vlakplaats No. 108, die resterende gedeelte en Gedeelte 2 van die plaas Dwaalpan No. 183 tot by die noordoostelike baken van laasgenoemde plaas; vandaar in 'n suidwestelike, suidoostelike, noordoostelike rigting en met inbegrip van die resterende gedeelte en Gedeelte 2 van die plaas Dwaalpan No. 183 tot by die noordwestelike baken van Gedeelte 2 van die plaas Staankraal No. 182; vandaar in 'n noordoostelike rigting langs die noordelike grens en met inbegrip van Gedeelte 2 van die plaas Staankraal No. 182 tot by die noordoostelike baken (middel van Krokodilrivier) daarvan; vandaar in 'n suidoostelike rigting langs 'n denkbeeldige lyn in die middel van die Krokodilrivier en met inbegrip van Gedeelte 2 van die plaas Staankraal No. 182 tot by die suidoostelike baken daarvan; vandaar in 'n suidwestelike rigting langs die suidelike grens en met inbegrip van Gedeelte 2 van die plaas Staankraal No. 182 tot by die noordoostelike baken van Gedeelte 1 van die plaas Bellevue No. 128; vandaar in 'n suidoostelike, suidwestelike noordwestelike rigting langs die oostelike, suidelike en westelike grense van en

Commencing at the south-western beacon of the remaining extent of the farm Vlakplaats No. 108; thence in a north-westerly, south-westerly, north-westerly direction along the western boundary of and including the remaining extent of the farm Vlakplaats No. 108 to the north-western beacon thereof; thence in a north-easterly direction along the northern boundary of and including the remaining extent of the farm Vlakplaats No. 108, the remaining extent and Portion 2 of the farm Dwaalpan No. 183, to the north-eastern beacon of the last-named farm; thence in a south-westerly, south-easterly, north-easterly direction and including the remaining extent and Portion 2 of the farm Dwaalpan No. 183 to the north-western beacon of Portion 2 of the farm Staankraal No. 182; thence in a north-easterly direction along the northern boundary of and including Portion 2 of the farm Staankraal No. 182 to the north-eastern beacon (midstream Crocodile River) thereof; thence in a south-easterly direction along an imaginary line midstream in the Crocodile River and including Portion 2 of the farm Staankraal No. 182 to the south-eastern beacon thereof; thence in a south-westerly direction along the southern boundary of and including Portion 2 of the farm Staankraal No. 182 to the north-eastern beacon of Portion 1 of the farm Bellevue No. 128; thence in a south-easterly, south-westerly, north-westerly direction along the eastern, southern and western boundaries of and including Portion